

ANNOUNCEMENT

We are now installed in our New Parlors in Salem. The rapid increase in our practice made new quarters imperative.

New location:—
STATE and LIBERTY STREETS
[Across from United States National Bank]

By our modern methods we have taken away the dread and fear of Dental hurts.

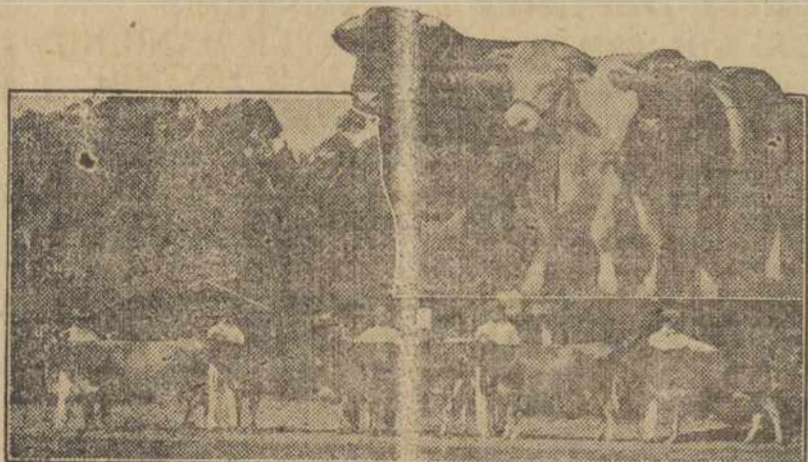
UTTER BROS.

"Utterly Painless"
DENTISTRY

Offices:—
Portland, Salem, Newberg, Tillamook

DR. EBER H. UTTER DR. FLOYD L. UTTER

Stock Comes Far to Pacific International



The Pacific International Live Stock Exposition is held in Portland, Or., but it is "true to name." Livestock of the best herds comes from all parts of the continent to fight out the last battle for supremacy in its show ring. Animals that win the purple ribbons at the Pacific International are as good as the best anywhere.

The lower panel of the picture shows the Thorp string of Jerseys from California. They will be at the Exposition in Portland November 3 to 10 to see if they are as good as the Jerseys of Oregon, Washington, Idaho and elsewhere. They have good Jerseys in California, but they will meet the best of the West at Portland.

The insert above shows three very typy Shorthorns that are coming to our exposition. They are owned by H. C. Lookabaugh of Oklahoma. They will help make up a wonderful string, but they will have to look their prettiest and beefiest if they win against the other Shorthorn herds to be shown this year.

Judges, without exception, will be men of national experience, and great ability. The judging alone is worth a trip to see and hear.

There is no livestock show held anywhere in America that surpasses that of the Pacific International. And the best of it is that it is near.

SALE AND WANT ADS.

Dr. Osmar K. Wolf, Woodburn, Ore. is fully equipped to fit your eyes with proper glasses. tf

We have several gas engines
For Sale—
been replaced by electric motors.
20-tf Molalla Electric Co.

DANGER—Lurks in all wires
You never can tell when they
are hot, telephone or Electric.
Warn your children.
Molalla Electric Co. tf.

Lost—Four Cotswold Sheep, two tags in ears, with name Jaeger on tag, and one yearling ewe, also one lamb with long tail. Inform W. W. Irvin. 41-2c

NOTICE: The sale season is at hand and I am prepared to handle all kinds of sales to your satisfaction. When ready, call Will Heinz, Auctioneer, Aurora Route 1 or Canby 13-16, 35-14tp

5 1/2 Per Cent Farm Loans on tracts not less than 40 acres, minimum amount \$1000, 5, 7 and 10 years. Oregon City Abstract Co. 36-tf

Aurora Cafe for Sale. \$1400, 00 handles the deal. Selling on account of sickness. 40-4tc

10-18 Case tractor for sale. W. J. Uppendahl, Woodburn, Ore.

D. E. TALBOTT, the real estate, furniture, farm and livestock sales auctioneer, 202 U. S. National bank bldg., Salem, phone 470 for sale dates. 38-4tp

Any girl in trouble may communicate with Ensign Lee of the Salvation Army at the White Shield Home, 565 Mayfair Ave., Portland, Ore. 37-52t

A Snap

42 acres improved, \$3500. Terms: cash \$1600, balance at 5 per cent.

For Sale—1 Wade drag saw, 1 4-ft. saw, 1 5 1/2 ft. saw, 1 7-ft. falling saw, 2 double bit axes, 1 falling axe, 1 splitting bar, 2 splitting sledges, 7 splitting wedges, 2 falling wedges, 2 saw handles, 2 spring boards, 1 5-gal. gas can, 1 saw set. \$150, Inquire Dewey S. Miller, Aurora, Ore. 40-2tc

80 Acres of fine soil at a snap price, if taken NOW. This land is improved with good buildings and small orchard. A small cash payment NOW will handle. Will sell half interest or will consider a trade. Let us tell you the proposition. OBSERVER.

PATRONIZE OUR ADVERTISERS

Lowest Price In History

Reduced price! Larger engine!
More power! Easier riding Triplex springs (Patented)! Strongest rear axle! 20 miles and more to the gallon! Very low upkeep! Real comfort all year! Greatest closed car value we know of at or near the price! Ask us for a demonstration.

Overland
Sedan \$795
F.O.B. Toledo

Touring \$495, Roadster \$495, Red Bird \$695, Coupe \$750; all prices f. o. b. Toledo. We reserve the right to change prices and specifications without notice.

HUBBARD GARAGE CO.
Hubbard, Oregon.

CUT DOWN your REPAIR BILLS with ALEMITE SPRING OILERS. Guaranteed to make your car ride more easily, See OUR DISPLAY at THE FAIR

W. E. BURNS--DAN BURNS

[Not brothers—the same man]
High St., at Ferry Salem, Ore.

PARTS FOR ALL CARS

JUST ONE PURPOSE

To supply the Men and Young Men of the Willamette Valley with the best of Clothes and Furnishings at Reasonable Prices.

BISHOP'S CLOTHING & WOOLEN MILLS STORE

136 1/2 N. Commercial Street Salem, Oregon

U. G. SHIPLEY COMPANY

outfitters to

Women, Misses and Children

145-147 North Liberty Street, Salem, Oregon

Originators of the Pay as You Go Plan

Quality Merchandise

Popular Prices

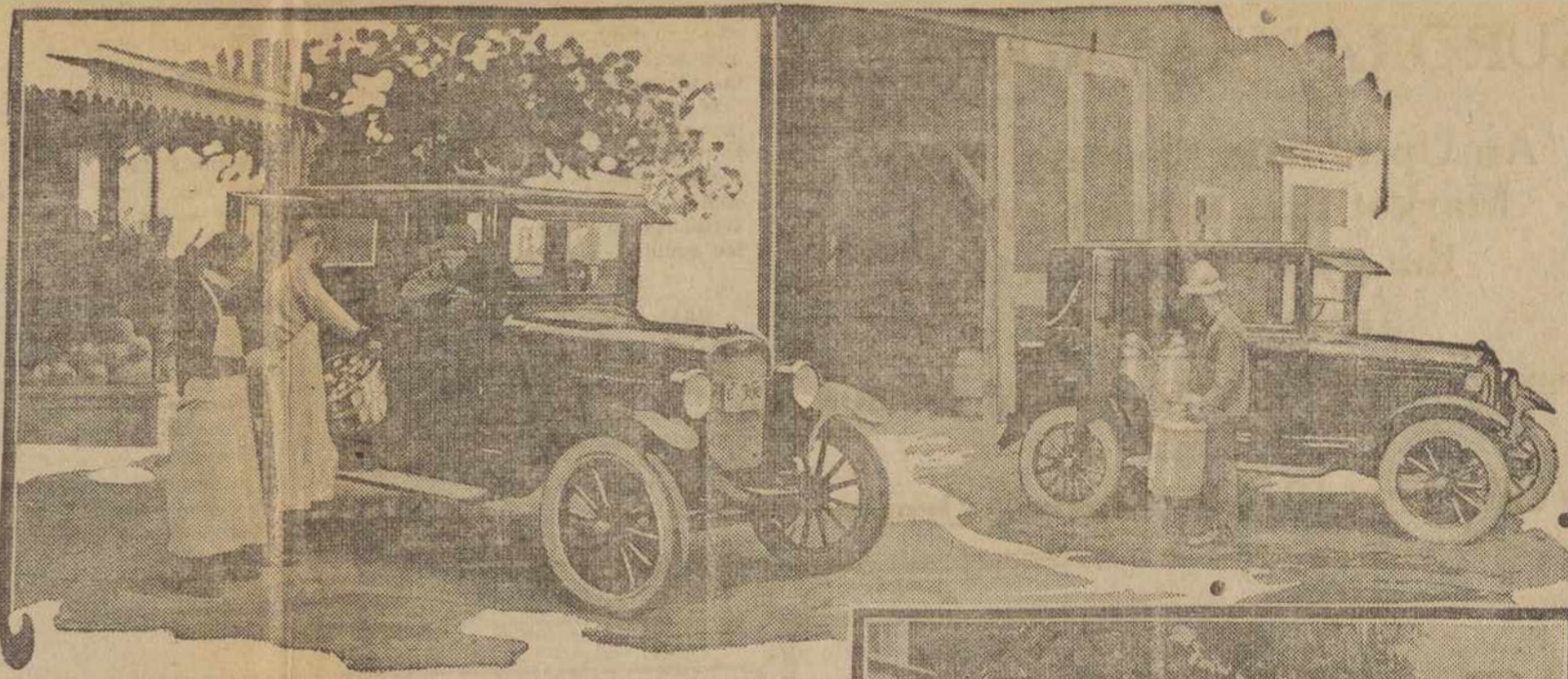
"EVERYTHING MUSICAL"

"Sherman, Clay & Co.--Pianos"

"If interested in Piano, drop us a card or call"

Moore's Music House

415 Court St., Salem, Ore.



Overland Champion Is Farmer's Friend

New Closed Model Is Beautiful All-Family Car with Wonderful Utility Qualifications

At last the farmer has been given a closed car of superior finish inside and outside, that he can utilize for various farm jobs and "chores" with the same cheerful abandon as he does his open touring car.

Thousands of farmers have expressed the opinion that they would gladly use closed cars if they could press them into practical work and get out of them the same all-around service the touring car provides.

This has been the farmer's winning argument for the touring car over the closed car for some years and it is admittedly a reasonable one. Practical service on the farm means the hauling of grain and other material of a highly "spillable" nature. A load of bran or shorts for instance leaves a car resembling the interior of a feed grinding room. Whole grain, despite every precaution, will persist in "creeping" out of the bags and scatter to every corner and crevice of the car.

Summing up "practical service" for the farmer means the hauling of milk cans, live poultry, root crops, cans of kerosene, machinery oil, household supplies, garden tools, implement parts, rolls of belting and a long list of every conceivable sort of usable material on the farm from wire fencing to an occasional live calf.

No wonder the farmer hesitated to invest his money in a closed car. But now the wonder ceases with the advent of the new Overland closed car, fittingly named the Champion for the good and logical reason that at \$895 it leads the world in closed car values and "champions" the cause of the farmer in every respect.

This new model, having as many personalities as a South American Chameleon, can proudly claim the distinction of being called "America's most versatile car" for in introducing the Champion, Willy-Overland has succeeded in bringing out something absolutely novel and radically unique;

in fact, a type of motor car that the farmer has long wished for—and now has. It is probably the most extraordinarily useful car for the farmer that has ever been produced, with an all-steel body built on a standard Overland chassis cradled on the famous Triplex springs and powered with the larger Overland engine. Exclusive features, utilities and economies mark this model as a remarkably convenient car, warranted to give the utmost in closed car benefits to the farmer.

In the Champion, the rear seat and upholstery is entirely removable, providing fifty cubic feet of clear carrying space. Apart from this, both front and rear seats quickly adjust forward and backward. The front seat adjusts to three positions so that a tall driver can move it back to drive without leg cramp and a short driver can move it forward so as to reach the pedals without stretching. The rear seat can be adjusted backward so that rear seat passengers will not be crowded when the front seat is moved back.

Another clever feature of this car and characteristic of the unusual foresight in design, is the arrangement of both front and rear seats which with the upholstery can be entirely removed and made up into a luxurious bed in the car, occupying the whole length and width of the car. What a boon to the farmer and his family who want to spend the night away from home on a little hunting jaunt.

But this does not end the many amazing advantages included in the Champion and perhaps the most outstanding superiority from the farmer's viewpoint is the fifty cubic feet of space obtainable in the car by removing the rear seat with the upholstery. This arrangement leaves an absolutely clear carrying space capable of real service to the farmer who can load his tools, bags of fodder, produce, and so forth, into the car

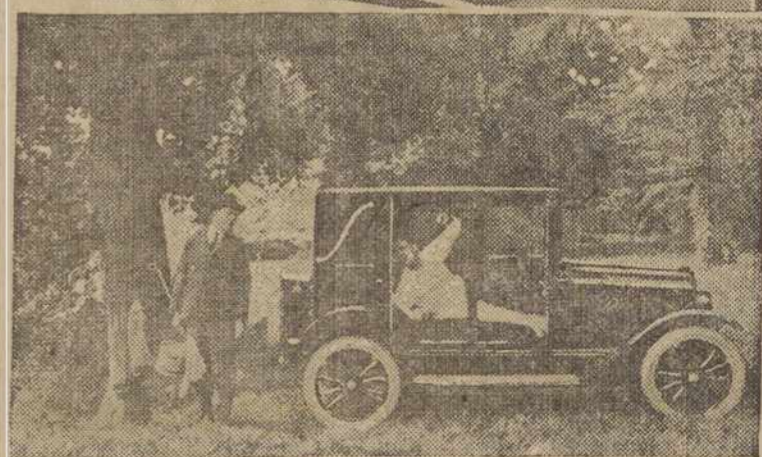
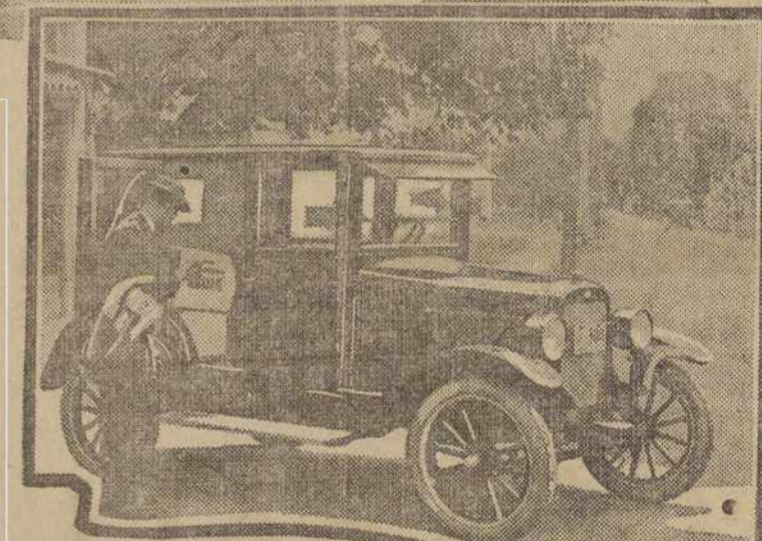
Aurora Lutheran Church

Last Sunday the quarterly business meeting took place after the morning service, when arrangements were made for the rededication of the church. It now seems likely that the church will be completed the last week in October, and that the dedication can safely be fixed upon the first Sunday in November. The congregation has so far in-

vited five outside pastors to participate in the ceremony.

Next Sunday the Sunday-school will open at 9:45, and the service which will be in German, at 10:45. The Lord's Supper will be celebrated during the service and it is hoped that many will attend. In the evening at 7:45 the choir assembles for another rehearsal, Wm. Schoeler.

Aurora has free auto camp ground.



through the wide rear door, with the satisfaction of knowing that the car can be thoroughly cleaned out later and the rear seat installed for passenger trips. The long grain Spanish upholstery is washable and wearable, to say nothing of being comfortable. Then on the back of the car is a commodious trunk of ample proportions with a warranted lock, in which there is plenty of room for personal effects when traveling or shopping in town.

The Champion is solidly built with that thoroughness of workmanship characteristic of all Willy-Overland products. The unusually clever general utility points of this exceptional car are the result of long and careful study on the part of the designers, who had in mind at all times the farmer and his particular needs, and for this reason the Champion will have a strong appeal to the man living away from the metropolitan centers.