

HOP PICKERS WANTED



YARDS NEAR—
NEWBERG
ST. PAUL
MT. ANGEL
HUBBARD
WOODBURN
FARGO
AURORA

AURORA, OREGON

SHADY CAMP GROUNDS
PURE WELL WATER
SWIMMING IN RIVER
PLEASANT AND PROFITABLE
PAYING \$1.50 PER 100 LBS.
WRITE OR PHONE ME

MARKET REPORT

Butter Fat 59
Egg per dozen 45c
Butter, 2-lb. roll 90c
Spring Broilers 18c to 23
Ducks, 20c to 25c
Turkeys, old,
Jeese 12c
Old Roosters, 8c
Hens, 18c to 24
Caacara, 10c
Lard, 25c
Potatoes 3c
Mohair
Wool 17c to 44c

Berries Pay Big

John Christensen of Canby reports that he sold this year \$430-worth of strawberries from a 2-acre field, as well as \$1500 worth of plants. The plants were all sold to California growers.

This is a remarkable income from a 2 acre tract. But so far as the crop is concerned, it is much less per acre than that grown by Fred Schneider of Aurora, who took \$150 worth of berries from a quarter of an acre—at the rate of \$600 per acre. These results show that enterprise, hard work, and good Willamette Valley land are stuff of which success is made.

NOT OPEN

Bill (not Uppendahl) had just returned from the big city. "Well, Bill," said the postmaster, "what do you think of the Metropolis?"

"Wat say?" answered Bill, stumped by the big word.

"I asked how you liked the Metropolis?"

"Oh, that—'twant open, but I'm 'oin' in next time."

DONALD GETS NEW BUSINESS

Jas. P. Feller of Donald has established a seed-cleaning ware house at Donald and is specializing in the re-cleaning of clover seed. He also buys and sells clover seed, vetch and grain. His warehouse is completed and is open for business this week. Donald has long needed an enterprise of this kind and is well located in the heart of a productive country for success in the business.

Announcement

I have opened a warehouse at Donald for the re-cleaning of Cloverseed, Vetch, etc., and will buy and sell cloverseed, grain, etc. I am prepared to serve the farmers of this section efficiently and promptly, in handling these products and your patronage is solicited. My warehouse is now open and you are invited to call and inspect our facilities for handling your seed and grain. JAS. P. FELLER, Donald, Oregon.

Dan Osborne, formerly of Turner, died very suddenly last week at Donald while working for A. E. Feller. He fell from a loaded wagon and when his companions went to his assistance was found to be dead. The coroner was called but he found an inquest unnecessary. The body was turned over to Undertaker S. A. Miller of Aurora. Apoplexy is supposed to be the cause of his death. The body was taken to Turner for burial, Friday. The deceased was a brother of Mrs. A. E. Feller.

G. R. WATT

ATTORNEY AT LAW

GENERAL COURT PRACTICE
ESTATES PROBATED
NOTARY PUBLIC

Office in Drug Store

Aurora, Oregon Telephone 22

NOTICE

The Molalla Electric Co. has purchased the entire stock of lighting fixtures and shades of the Western Electric Works of Portland. They are now on sale at most reasonable prices.

MOLALLA ELECTRIC CO.

Canby, Oregon

We do home wiring, handle motors and everything electrical.

Aurora Moonshiners Arrested

Two men giving their names as W. R. Dempsey and G. Johnson were arrested Friday night by Federal officers from Portland, at the Winche's farm near the A. W. Giesy place on a moonshining charge. The officers confiscated a large quantity of moonshine liquor, 13 barrels of mash, four sack of sugar, nine sacks of corn meal, and 200 gallons of kerosene for use as fuel.

The officers say the plant was a model distilling outfit, the equipment being up-to-date and complete. The whole outfit was confiscated. It had been in operation since May. Sunday officers from Salem visited the place and found 30 more gallons of liquor hidden under a pile of straw.

Residents of the neighborhood had suspected for some time that illicit liquor operations were going on.

Pythians Frolic Saturday

The Portland "Doky" Band and Patrol have arranged a Pythian Day at Columbia Beach Park, near Portland for Saturday, August 14. All Pythians and Votaries of the D. O. K. K. and their families and friends are cordially invited to attend the festivities.

There will be band concerts, games, races and stunts too numerous to mention.

Invitations have come to Hermes Lodge of Aurora, all its members and their families and their friends to join the frolic.

Town Topics

Sherman Clay Pianos at Moore's Drug Store, Woodburn.

G. A. Ehlen and family left yesterday for an outing at Netarts.

J. P. Freeman and family of Champoeg, were Portland visitors Wednesday.

Mail your drug orders to Moores' Drug Store, Woodburn

Jack Vandeleur left Sunday night for San Francisco. After two weeks in California he will go east.

John Jenny of Mt. Angel was one of the victims of the Hotel Elton fire at Portland Sunday. Burial took place at Mt. Angel yesterday.

Mr. and Mrs. Hauser and three children of LaCroose, Wisconsin, were visitors at the home of Mr. and Mrs. W. J. Flick at Union this week.

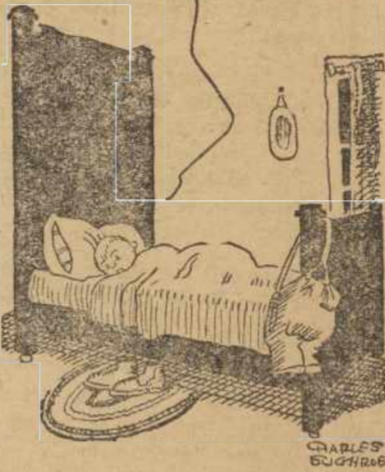
G. R. Watt and Captain "Watt" Snyder spent Saturday and Sunday at Reedsport, the boom town at the mouth of the Umpqua river. They had a fine trip but were not overimpressed with the new town.

The fatal accident at the Pudding river bridge emphasizes the need of better approaches. The whole bridge is none too good and the long approach on the Clackamas county side is even worse than the Marion county side. Flanking it lengthwise would improve the Clackamas approach considerably.

Complete line of Drugs, etc., at Moore's, Woodburn. Mail your orders.

MICKIE SAYS

OBONY OBONY IN ALL MY WAY
CAN'T FOLKS LOOK OVER THEIR
STOCK OF ENVELOPES IN PAPER
IN STATEMENTS IN ORDER WHAT
THEY'RE GOINTA NEED INSTEAD
OF WAITIN' UNTIL THEY'RE ALL
OUT IN THEN RUSHIN' TH'
POOR PRINTERS IN POOR LIL
MICKIE T' PIECES 2 OH BONY
'S A COOL OL' WORLD!



GRASSHOPPERS NEXT SEASON

Killing by Poisoning and Plowing Are Most Effective Ways of Guarding 1920 Crop.

Each female grasshopper lays from 80 to 160 eggs, in clusters of 40 to 80 in small holes about 1 1/2 inches below the surface of the ground. Mr. Stewart Lockwood, entomologist for the North Dakota Agricultural college, says that if these eggs are allowed to hatch next year's crops are in serious danger. He states that killing by poisoning and plowing are the two most effective ways of safeguarding the 1920 crop. This year it was found that very few if any grasshoppers hatched out on plowed land. Sixty per cent of the hoppers came from roadsides, fence rows, flax stubble land, and 40 per cent from land that was stubbled into crop the fall of 1918.

SILo IS PAYING INVESTMENT

Hole in Ground, Wood, Concrete or Brick Structure Will Give Farmer Good Service.

Plan to have a silo of some kind. It may be as simple as a hole in the ground, and it may be a wooden silo; it may be a concrete silo or it may be a tile block silo. All will give good service and be a big paying investment.



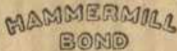
Printing Safeguards Your Money

Protect your cash not only with bolts and bars and banks but with businesslike printed forms and records for every transaction you undertake. We can show you a paper—



Paper—that betrays erasure and prevents fraudulent alteration of your checks, notes, drafts and receipts.

For letterheads and general printed forms we use and recommend a standard paper



that we know will give you satisfaction.

Allen

IT PAYS

To examine details. Note the strong frame of the Allen, its sturdy axles, stout transmission, successful engine, liberal radiator, superheated intake, nice general balance, easy spring action, fine upholstery, and graceful lines. We are ready to demonstrate the Allen any time.

Frank L. Miller
Aurora, Oregon

YELLOWSTONE NATIONAL PARK

Nature's Most Wonderful Laboratory and Out-of-Door Paradise

"Yellowstone National Park is ideal for camping out. When people realize this it should quickly become the most lived in of all our national parks. Remember that the Yellowstone is yours".—Franklin K. Lane, former Secretary of the Interior.

Its Hotels Are Marvels of Superior Service
THROUGH SLEEPING CAR DAILY
Portland to West Yellowstone
Operated by the
Union Pacific System

LEAVES PORTLAND 5:00 P. M.

Let our representative explain the various tours which enable visitors to see all of Yellowstone so comfortably and at minimum cost; also quote fares, prepare your itinerary and make your reservations.

J. H. O'NEILL, Traveling Passenger Agent, with headquarters at 701 Wells Fargo Building, Portland, will be glad to call personally on any wishing to visit Yellowstone, and arrange all details. Drop him a card, or address

WM. McMURRAY
GENERAL PASSENGER AGENT
PORTLAND, OREGON

