

COVERS  
THOROUGHLY  
THE  
GOLD FIELDS  
of the  
INLAND EMPIRE



# THE SUMPTER MINER

EASTERN  
INVESTORS  
IN  
OREGON MINES  
Pay for  
AND READ IT

## AN OLD TIMER IN THE CAMP.

### Captain J. J. Parker, of Port- land, Here to Visit His Son.

Captain J. J. Parker, of Portland, father of Dr. Parker of Baker City and of Ed T. Parker with the Geiser-Hendryx Investment company, came in on this morning's train to pay a visit to his son here. Captain Parker is returning from Timber Canyon, where he is connected with the Timber Canyon Gold Mining company. He is an old timer in the Eastern Oregon gold fields, having had charge of the removal of the old Sumpter smelter to Dixie creek for Houser and Richardson, was formerly with the North Pole company, and was employed in the construction of the Golconda mill. Besides being a miner of large experience Captain Parker is also a soldier. He saw two years of Philippine service with the Eighth Army Corps as train master in North Luzon. Although fifty-nine years old, Captain Parker is staunch and sturdy, a perfect specimen of manhood. To the Daily Miner this morning he said:

"I have never lost faith in the greatness of the Eastern Oregon gold fields, and am no stranger here. I was on the site of Sumpter twenty years ago when there was only one log cabin. This was a boarding house run by Mrs. Starr to accommodate the teamsters. I have been all through the various districts in the vicinity of Sumpter, having been with several prominent companies here in later years. I know the country, the mineral deposits, and have absolute faith in its future greatness."

In regard to the Timber Canyon company Captain Parker said:

"About a year ago I examined this property for the first time after riding for three consecutive months and covering about 1,700 miles on horseback in the examination of mining properties in Eastern Oregon and Idaho. At that time I put about two weeks in Timber Canyon, unwilling to believe that a continuous ore body running through that country for a distance of upwards of two miles was mineral bearing throughout its entire length before I became convinced it was so."

"Since the organization of the Timber Canyon Gold Mining com-

pany, I have been in charge of the work there with from four to seven men and the development has proven my first examination to be correct. We have exposed the ledge at frequent intervals for the length of nine claims and gold can be panned in greater or less quantities throughout the entire distance. Where shoots have been encountered on the surface the values are of course greater and run in some places from \$25 to \$50 per ton.

"The work now planned will within a very short time cut an ore chute of this character about 100 feet in depth.

"This ore chute is of unknown length but it is proven on the surface to be at least 400 feet long. It is difficult to say how many such ore chutes may be found along the extraordinary length of this ledge, but in a proposition where two to twelve feet of quartz runs continuously through the country for 13,500 feet and every opening along it shows gold, it is safe to say that many high grade ore shoots will be found.

"I have spent nearly thirty years in connection with the mining for gold and my reputation is at stake in regard to this property. After the first examination I made of it I predicted that it would be the biggest gold mine in Oregon, and I am now convinced that I was right then."

#### CORNUCOPIA SOLD.

Well Known Mining Property  
Taken Over By New  
York People.

A Press dispatch from New York yesterday states that under the laws of New Jersey was incorporated today the Cornucopia Mines company of Oregon with a capital stock of \$5,000,000. The company has purchased the big Searles property in

Baker county, Oregon. The incorporators are Charles M. King, Raymond M. Lowey and Richard E. Dwight.

#### Visits Cracker Creek.

D. L. Killen, president of the Killen, Warner Stewart company left yesterday afternoon to visit the Cracker Creek properties operated by the company. Mr. Killen contemplates making a general roundup of the mines operated by his company in the near future.

#### KENTUCKY LIQUOR HOUSE

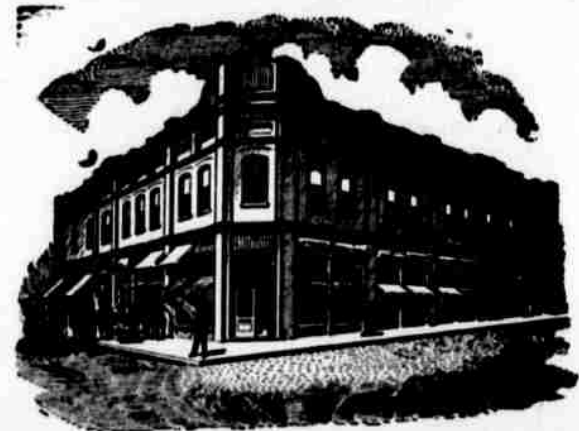
JOHN GAGEN, Propr.

Jobbers in  
Wines, Liquors and Cigars

#### Sumpter Bottling Works

All Kinds of Carbonated Drinks

## HOTEL SUMPTER



L. J. HAZELWOOD, MANAGER

Dining Room in Connection. American Plan.  
Headquarters for Mining and Commercial Men.  
Sample Rooms. Stages for All Parts of Camp.  
Electric Light and Steam Heat.

Rates \$2 to \$3.50 a Day.

MOUNTING BOARD  
MOUNTING CARDS  
OFFICE SUPPLIES  
STATIONERY OF ALL KINDS

AT

### Mercer Drug Co.

GRANITE STREET

SUMPTER, OREGON

J. H. CONNORS.

J. L. HARVEY.

## ...The Bar...

High Grade Wines, Liquors and Cigars  
Club Rooms in Connection  
Headquarters for Miners

SUMPTER

OREGON