

NEW AUTO GARAGE STARTS IN PEORIA

PEORIA, Ore., Feb. 20—Special—Among the many improvements going on in Peoria is a new garage, which will be under the management of Mr. Albert Hughes in conjunction with his general blacksmithing business. Mr. Hughes intends to take the agency of some good car and do automobile repair work.

Mason Bros. have moved their pool hall and confectionery goods into their new place of business which is across the street from the Pacific Tel. & Tel. Co., office. The telephone office is under the management of Mrs. Nannie A. Gibbs and is progressing very satisfactorily. The new modern saw-mill is now about completed and is doing a good business.

Democrat Want Adds Get Results

NASH SIX MAKES TRIP TO MINES

Gates Hill Crossed; First Car to Silver King This Season

One of the best records for mud and mountain driving attempted this year was completed by Clarence Collins, of the Day Motor Company Wednesday

when he drove to the Silver King Mines, 12 miles beyond Gates in a Nash Six.

Leaving here in the morning with Carl N. Anderson, engineer for the Silver King Company and Clyde Harold, the trip to Gates was made in two hours. The stiff hill beyond Gates was negotiated successfully in the mud and the car reached its destination without great difficulty. Mr. Anderson completed his errand and the party returned to Albany the same day.

The Nash is the first car to reach the mines this year, although other attempts have been made previously. The mining company is taking in a large amount of new machinery and is getting ready for extensive development very and a good season's run.

PROPER CARE OF BATTERIES URGED BY LOCAL EXPERT

"A battery that is run down for lack of proper charging, is like a man who has been weakened by a lack of proper food," says D. H. Preston, local Willard expert. "The battery is too weak to take the charge in the normal way just as the man who has not had sufficient nourishment may be too weak to work for a meal. For this reason it is useless to try to charge the battery by running the engine of the car."

"The proper method to follow with such a battery is to put it on charge at an extremely low rate for a short period and then gradually increase the rate until the normal charging rate has been reached. This can only be done at some service station which is properly equipped for this sort of work."

"Occasionally some one asks us if this job cannot be done by running the engine slowly at first and letting the battery charge in that way for several hours. The one thing that stands in the way of such a charging process is that the generator is so constructed that it supplies current at nearly normal voltage almost as soon as it begins to supply it all. This process is not a workable one."

IRRIGATION PROJECT MAY BECOME REALITY

Land in Columbia Basin May Be Reclaimed if Plans Carry Out

WENATCHEE, Wash. — Dreams of far visioned pioneers who saw a mirage of wasted waters of the high Rockies flowing over thirsty Washington lands are to be realized if the long proposed Columbia Basin project, said to be the greatest project of its kind ever conceived, is carried out.

The proposal is to carry water from Idaho and Montana through 130 miles of lakes, canals and tunnels to irrigate approximately 350 square miles of land lying in southeast Washington in the "Big Bend" of the Columbia River.

Engineers employed by a commission created by the Washington legislature are at present going over the immense scheme to determine its feasibility. The legislature authorized the commission to spend \$100,000 if necessary, to investigate the plan in all its details and to determine its cost.

Water drained from approximately 25,000 square miles of the Rocky Mountains will be used in the system. Aided by lakes and tunnels, a great canal will carry it from storage lakes in Idaho to Rock Lake, Wn., 30 miles

south of Spokane, according to present plans. The canal will then run west and south to the Palouse, Pasco and Walla Walla districts in the "Big Bend" country. A network of smaller canals and laterals will carry the water onto the land, which at present receives only scant rainfall during several months of the year.

In size, the project, it is said, approximates the total present development of all irrigation projects under the United States reclamation service. The project, it has been estimated, by irrigating the arid lands and by converting the "sagebrush into alfalfa" will increase by more than one-half the total aggregate value of all taxable property in the state. The land to be irrigated, it is figured, will support a population more than double the present population of the state.

The volume of water to be carried in the main canal will be approximately 20,000 cubic feet per second. A season's run of the canal would fill a lake 30 miles wide, 100 miles long and three feet deep.

SUPT. J. E. CALAVAN OF CLACKAMAS CO. VISITS BROTHER

County school superintendent J. E. Calavan, of Clackamas county visited with his brother V. L. Calavan of the East Albany drug store last night, on his way to Philomath where he is to speak at a local teacher's institute today. Supt. Calavan is a former school man of this county and is making good as superintendent of Clackamas county, where he has served for several years.

112 Millions used last year to KILL COLDS

HILL'S CASCARA QUININE BROMIDE

Standard cold remedy for 20 years — in tablet form — safe, sure, no opiates — breaks up a cold in 24 hours — relieves grip in 3 days. Money back if it fails. The genuine box has a Red top with Mr. Hill's picture. At All Drug Stores

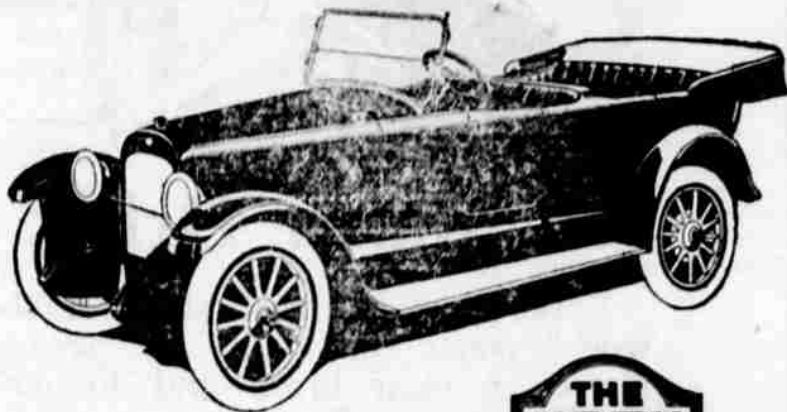


Initial showing of the assorted styles for spring. Miss Manhattan Suits, Youthful New York styles, the Jaunty Jackets, the Just Right Skirts and Sashes are all favorite features of the fashion.

M. Sternberg & Co
"Ladies Shop"

J. D. HUSTON
PAINTING, DECORATING and PAPER-HANGING
Phone 4118
Shop at First and Baker Streets

THE NASH PERFECTED VALVE-IN-HEAD MOTOR



Perfect Valve-in-Head Motor
Nash Passenger Cars:
5-Passenger Car
4-Passenger Sport Model
2-Passenger Roadster
7-Passenger Sedan
4-Passenger Coupe
7-Passenger Car

The ever increasing preference for the Nash Six is the logical result of unusually fine performance.

It has earned the unqualified endorsement of thousands of owners and has established for the Nash Motors Company a great good will that is nation wide.

Every Nash model, open and closed, has the Nash perfected valve-in-head motor, powerful, economical and quiet and is distinguished by rare beauty of design, finish and appointment.

DAY MOTOR CO.

111 West First St.
Overland and Nash Cars, Nash, Mack and Federal Trucks

NASH MOTOR

VALUE CARS AT VOLUME PRICES

Price and Value

A suit of clothes can cost too much or too little. No possible combination of materials and workmanship can justify \$200 for a business suit.

Motor Trucks can cost too much or too little. There is a happy medium—a point where service and price balance—a middle ground where value is greatest.

The limited market for the high priced truck means a small production, high overhead; necessitates a wide margin of profit, an inflated market price. The motor truck built down to a price is an expensive investment. Too many hours in the repair shop, high upkeep, short life, quick depreciation, low resale value.

Bethlehem Motor Trucks are not built down to meet a price or up to justify a price. They represent the right economic combination of proper price and proper value. Buy your Motor Truck on Facts.

3-Ton Chassis 2½-Ton Chassis
1½-Ton Chassis 3½-Ton Chassis

BETHLEHEM MOTORS CORPORATION
ALLENTOWN, PA.

Buy Safely • Buy Bethlehem

R. W. TRIPP, DISTRIBUTOR
1st & Lyon Sts., Albany, Ore.

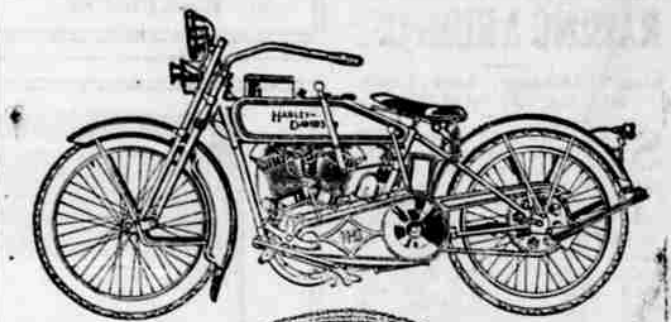
Dry Old Growth Fir, Cord and Slab Wood
Hammond Lumber Co.

INTEREST IT'S TO YOUR

To Bring Your CREAM, POULTRY and EGGS to HAZELWOOD CREAM STATION
H. L. Stenberg, Mgr.
128 West 2nd St.
Highest Cash Prices Paid

PRIVATE SALE OF HOUSEHOLD GOODS

Monday Evening
Feb. 23, 6 to 9 P. M.
Call at Wood Apts.
222 East 3rd St.



The World's Champion

THAT is the name and the fame the Harley-Davidson motorcycle has gained. It is preferred for its performances all over the world—and adopted by the United States government as standard after its wonderful war work on the fields of France. Let that be your standard to go by when you buy a motorcycle. Won 200 mile World's Championship road race, 200 mile National Championship. Come here and see the 1920 Harley-Davidson. See why it is the World's Champion.

40 to 60 miles on a gallon of gasoline; 250 miles on a quart of oil.

L. B. HIXON, Jr.
Bicycles, Motorcycle and Auto Supplies.
129 Lyon St.