

FLOUR OUTPUT IS LARGE FOR YEAR

**Red Crown Mills Greatly In-
creases Production and
Plans Expansion**

A flour mill with a daily capacity of 150 barrels is no small asset to any community, but this is what the Red Crown mill is maintaining at Albany. A branch of the Portland Flouring Mills company, the Red Crown is rapidly building up one of the largest milling businesses in the state. This not only means employment for local labor but a market for the products of the vast acreage of the country hereabouts, and an added value to the county in the by-products of the flour business.

Economy in home consumption is also a favorable factor to be considered the product of local mills, while being superior to many other brands of flour, sells for less money. There is at present a difference of \$2 a barrel between the local flour and so-called high-grade patents.

"These patent flours", says C. J. Johns, local manager of the mill, "are only better for white light bread. The flour that we are putting out is far superior for biscuits, pastry, doughnuts, cakes, etc., and local bakers are bearing us out in this by using large quantities for these purposes. One reason for the high price of flour is that so many people demand high grade patents when they really do not know what this means."

Mr. Johns came to Albany from La Grande, Ore., last May and is proving himself an efficient manager. During the last year the mill has been over hauled, new water wheels installed, new flumes built and other improvements made which have enlarged the capacity of the plant. New machinery will be installed this year and if the business continues to grow it is not unlikely that the company will put in a new mill here on an extensible basis. Mr. Johns would not state what plans are in view, but intimated that with conditions right some important development could be looked for this year.

The mill employs about 20 people

and has a monthly payroll of from \$2,800 to \$3,000 a month.

Children Are Stargivn In Europe, Report

PHILADELPHIA, Dec. 30.—Sidney Rich, formerly United States consul at Chemnitz, Saxony, who lately returned from a five months tour of Austria, Hungary and Germany, says children are starving by thousands in Europe.

What he had seen of the reconstruction and relief work done by Americans made him proud of being an American, Mr. Rich added. He urged that the United States give moral support to the German government in its effort to down the "red" element in that country.

"In German cities I have seen crowds about grocery store windows" said Mr. Rich, "where under glass cases American food was placed on view as a curiosity. People still obtain rations on 'food cards' and get a quarter pound of rice or coffee once every two weeks."

Aged Hawaiian Makes Living

HILO, Island of Hawaii, T. H.—N. K. Kinaina, full blooded Hawaiian who is approaching his 103rd birthday, is making his living, despite his years, by tilling the soil.

Kinaina has eight acres of land at Haabaa where he raises sugar cane and taro. This tall, patriarchal Hawaiian, who was born April 21, 1817, still has keen eyesight, while his hearing is as acute as ever. He speaks no English, but is a fluent conversationalist in his native tongue.

In the days of the old monarchy, Kinaina was one of its chief retainers and during Queen Kaahumanu's life he was one of her principal advisors. From his office he gained the nickname of Kinaina, which means "governor," which has stuck to him ever since, displacing his own name of Iwelani.

The aged farmer was married twice, but had no children and both his wives have been dead many years.

Returned to Lebanon—

Mrs. O. J. Wells of Lebanon returned home today after visiting her sister here Mrs. N. B. Springer.

CREAMERY HAS GREAT YEAR

**Products Sell for \$321,000
And Farmers Get \$275,-
000 for Cream**

"Oregon's prize creamery" is the term applied to the Albany Creamery Company, and the title is justly earned. In competition with the best buttermakers from 11 states west of the Rocky Mountains, W. R. Coie, of the local institution last spring carried off the high honors and is the proud possessor of a gold medal awarding him the title of the best buttermaker at the dairy exposition held at Boise, Idaho.

The Albany Creamery is a co-operative institution. It was started some 25 years ago under this plan and has continued to prosper. The officers are C. L. Shaw, president; Henry Freerksen, vice-president; Wayne Dawson, manager and secretary; J. D. Isom, J. H. Scott and Isaac Whealdon, directors.

The Albany creamery is one of the largest financial institutions of the city, distributing annually more than \$300,000 to Linn county people. During the year just closed the gross business amounted to \$321,000, which was an increase of 31 per cent over the 1918 business.

Of this amount \$275,000 was paid out to farmers in cream and egg checks. The output was 526,000 pounds of butter. The plant has a large capacity and runs steadily every day. Seven people are employed in the factory and 15 others are on the outside collecting cream, soliciting and attending to other business. The monthly payroll is in excess of \$2,000.

According to Wayne Dawson, manager of the creamery, the last year was the best in the history of the company and the outlook for 1920 is even better. The company has its cap set for a half million dollar business and every effort will be made to reach this mark.

WHEN ANSWERING classified ads kindly mention *The Democrat*.

25 Percent
to
50 Percent
Reduced

January Sale Of Ladies Suits

25 Percent
to
50 Percent
Reduced

To close out the remaining numbers and clear the hangers for new spring stock, we have made an extraordinary price reduction of—

1-4 to 1-2 off

ON LADIES' WINTER SUITS

This gives you an unusual opportunity to cut the H. C. L. Only a limited number of these stylish models left. Make an early selection and a liberal saving.

SALE ON MILLINERY

Classed Into Three Lots

Lot No. 1 \$1.79

Lot No. 2 \$2.49

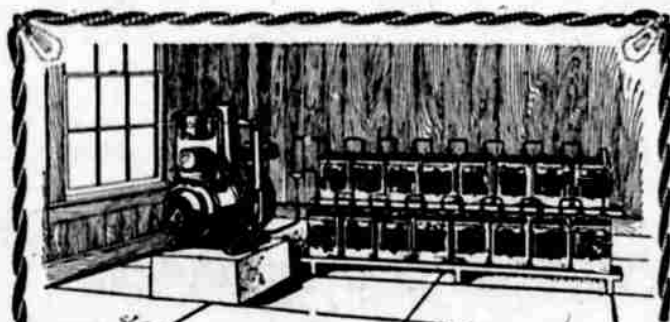
Lot No. 3 \$5.00

Reduced
Prices
On Coats

M. Sternberg & Co.

Reduced
Prices
On Coats

Ladies Shop



**Famous
Valve-in-Head
Motor**

**Power
Efficiency
Simplicity**

**Runs on
Kerosene**

Better than 26 Years Actual Farm Service

In March, 1917, a standard Delco-Light plant was started on a "life-test." It was chosen at random from stock, a plant just like the thousands of others produced each year. By the latter part of October, 1919 this plant had run 13,785 hours,—the equivalent of over 26 years of actual farm service.

What does this test mean?

To the makers of the Delco-Light it means that the years and the money spent on early experimental work have been justified; that the 80,000 Delco-Light plants already in use are going to give long and satisfactory service; that the problem of electricity for the farm has been solved forever by Delco-Light.

To you it means that Delco-Light offers a complete electric service for your farm, a service that is cheap, dependable and efficient.

Year after year your Delco-Light plant will go on lighting the house and barns, pumping water, helping with the washing and ironing.

The distinctive features of design and workmanship found only in the Delco-Light plant are the things which made possible the record of the Delco-Light "Life Plant."

These things will bring to you the same satisfaction and comfort that they have already brought to over 80,000 Delco-Light users.

Write for the Delco-Light Catalogue

HOFLICH ELECTRIC SHOP

Delco-Light Dealers

18 W. 2nd St.

Albany, Ore.

Delco-Light is Manufactured by The Domestic Engineering Co.,

Dayton, Ohio.

DELCO-LIGHT

THERE'S A SATISFIED USER NEAR YOU