

# LINN STOCKMEN GIVEN DIRECTORY

List of Pure Bred Animal  
Husbandmen is to be  
Published

One of the first important steps taken by the Linn County Pure Bred Stock Association is to publish a directory giving the names and post office address of every member of the organization and the class of stock or poultry raised. The following charter members is given as signed yesterday and others will be added as the organization is perfected.

J. H. McConnel, Shedd; Jerseys.  
H. J. McInnis, Albany R 1, box 33; Jerseys, Berkshires.  
V. S. Barr, Sweet Home; Durocs, Shorthorns.  
S. J. Moss, Sweet Home; Orford sheep, Angora goats, Shorthorns, Duroc.  
O. K. Blatchford, Tangent; Shorthorns.  
F. H. Porter, Halsey; Red Polled cattle, Cotswold sheep.  
D. A. McCormick, Lebanon, R 1; Shorthorns.  
E. L. Potter, Corvallis, O. A. C.  
O. M. Plummer, Portland; O. I. L. E.  
Alfred C. Schmitt, Albany; Holsteins.  
H. H. Eastman, Albany; registered Chester White hogs.  
W. H. McConnel, Shedd Stock Farm Jerseys.  
W. C. Obermeyer, Tangent, Ore.; Shorthorns, Cotswold sheep.  
M. J. Looney, Tangent, Ore.; Chester White swine, Hampshire sheep.  
Urban Shrode, Albany, R 5; Jersey cattle, Chester White swine.  
J. L. McFarland, Tangent; Hampshire sheep.  
F. P. Slate, Tangent; Shorthorns.  
F. E. Bogue, Albany, R 3; Cotswold sheep.  
Chas. Schmidt, Albany, R 1; Brown Swiss.  
Ben T. Sudtell, Halsey; O. I. C. swine, Shorthorns.  
D. F. Burge, Albany, R 2; Percherons, of quality.  
C. A. Pogle, Shedd; Lincoln sheep.  
C. C. Duncan, Halsey; Jersey cattle.  
E. A. Rhoten, Salem.

C. H. Davidson, Shedd; Cotswold sheep (Shorthorn cattle  
Thos. Small, Scio; Berkshire.  
Geo. A. McCart, Harrisburg; Holsteins.  
Robt. K. Burton, Harrisburg; O. I. C. hogs.  
E. H. Holloway, Shorthorn cattle, Shropshire, and O. I. C.  
Dave Horsburgh, Scio, R 3; Shorthorn, Cotswold sheep.  
Ralph Dannen, Shedd; Shorthorn, Shropshire sheep.  
J. C. Brown & Sons; Shedd; Jersey C. W. Walker, Albany, R 5; Poland hogs.  
Ed. Trulove, Albany, R 5; Jersey cattle, and Hampshire hogs.  
J. O. Fry, Albany R 5; Jersey cattle.  
Henry W. Minert, Albany R 6; Jersey cattle, O. I. C. hogs, Shropshire sheep.  
L. Cade, Albany, R 1; Jersey cattle, Berkshire hogs.  
Perry Parker, Plainview; Clydesdale horses.  
Eng. A. Canning, Lyons; Poland China hogs.  
E. L. Bilyeu, Scio; White leghorn chickens, Shorthorn cattle.  
H. J. Farwell, Shedd; Clyde horses.  
Heike Ohlmy, Albany; Percheron horses.  
F. S. Hillman, Halsey; Horned Dorset sheep.  
A. G. Propst, Albany, R 6; Jerseys, O. I. C. hogs, barred rock, Anconas, S. C. leghorns.  
M. Keefe Albany R 1; Shorthorn cattle.  
Chas Ashton, Tangent; Holstein.  
M. Averhoff, Lebanon; Durocs.  
Robert L. Burkhardt, Albany; Reg. Jersey cattle.  
Felzer Bros. Tangent; Shropshire; Shorthorn.  
H. W. Cooley, by O. E. Hogue, manager, Albany, Harrisburg; Holstein and Ayrshire cattle.  
R. C. Burkhardt, Lebanon; Shire horses, Shorthorns, Rambouillet and Shropshire.  
J. B. Cornett and Son, Shedd; Short horns, Cotswold.  
A. C. Miller, Albany, R 3; Jersey cattle, O. I. C. hogs.  
McCormick Bros, Lebanon, R 1; Shorthorn.  
Cole & Harold, Albany, R 6; Shorthorn, Chester swine, Scotch collies, S. C. white leghorns, Shorthorns, Cotswold sheep.

## Shriners Fined Riding Horses Scarce Articles

PORTLAND, Ore.—The Portland committee in charge of the arrangements for the Shrine convention to be held here June 22, 23 and 24, 1920 has discovered that riding horses have been so largely superseded by automobiles in the northwest that it may be almost impossible to gather 250 good appearing animals at the yards in this city. It has been the intention to use them extensively in street parades of which there will be four in the three days of the convention.

A canvas of the city shows that there is not even one livery stable existing in Portland where horses and rigs may be rented. All of the good horses owned in this city are boarded at private riding schools and a fee of ten dollars is exacted every time one of the animals is allowed to leave the barn.

## Age No Bar To Old Hawaiian Now 103 Years

SAN FRANCISCO, Cal. Dec. 30—Construction of a large granite build-

ing in the civic center here, to be used as a war museum, Americanization hall and meeting place for veterans, is proposed by the War Veterans Memorial Association.

The building, projected as a memorial to San Francisco's soldiers and sailors who died in the war, would

be financed, under plans laid here, by the sale of stock at a dollar a share.

Out of every dollar you spend for an article made outside of Oregon, 75 cents goes away to maintain a payroll in some distant place.

## NEW JANUARY RECORDS ON SALE TODAY

### POPULAR

- 18631 (Wonderful Pal, . . . . . Sterling Trio) 85c (There's a Lot of Blue-Eyed Marys in Maryland . . . . . Shannon Four) (Wait Till you Get Them Up in the Air) (Boys . . . . . Murray)
- 18628 (Floatin' Down to Cotton Town . . . . .) 85c (I Am Climbing Mountains—Campbell . . . . .) (You Didn't Want Me When You Had Me . . . . . Burr) (Gems from "Sometime" . . . . .)
- 18620 (Gems from "She's a Good Fellow" . . . . .) 85c (Victor Light Opera Co.) (\$1.35 (Victor light Opera Co.)

### DANCE

- 18625 (My Baby's Arms, Medley Fox-trot, Pietro) 85c (And He'd Say O-La-La, We-We, Pietro) (I Want a Daddy Who Will Rock me to Sleep . . . . . All Star Trio)
- 18626 (All the Quakers are Shoulder Shakers . . . . .) 85c (Oh What a Pal Was Mary—Waltz . . . . .)
- 18630 (Nobody Knows—One Step . . . . .) 85c (Jos. C. Smith Orchestra)

### RED SEAL

- 64838—\$1.00 (Dear Heart . . . . . Emilio de Gogorza)
- 64838—\$1.00 (Only You . . . . . John McCormack)
- 74590—\$1.50 (Invitation to the Waltz . . . . .) (Philadelphia Orchestra)
- 87292—\$1.00 (Sans Toi . . . . . Geraldine Farrar)

**Woodworth Drug Company**  
Music Department

## Reliable Service

You will more thoroughly enjoy the HOLIDAY SEASON if you know your money and valuables are safe.

We depend upon our STRONG VAULTS and not upon mechanical devices to protect your money and your valuables.

### SAFETY DEPOSIT BOXES FOR RENT

Where Valuables Are Safe

## The First National Bank

"Old and Reliable"

AND

## The First Savings Bank

"Where Savings Are Safe"

Four Per Cent Interest on Savings.

Farm Loans, and Agents for Federal Farm Loans.



## SUNBEAM MAZDA LAMPS

SUNS ONLY COMPETITOR

EVERYTHING ELECTRICAL

Cash or Terms (WESTERN ELECTRIC WASHING MACHINES  
FREE (WESTERN ELECTRIC SEWING MACHINES  
Demonstration (WESTERN ELECTRIC VACUUM CLEANERS  
WIRING DONE BY LICENSED & BONDED WIREMEN

Phone 20

THE ELECTRIC STORE, INC.  
327 West First St., Albany

# THREE STURDY LINES

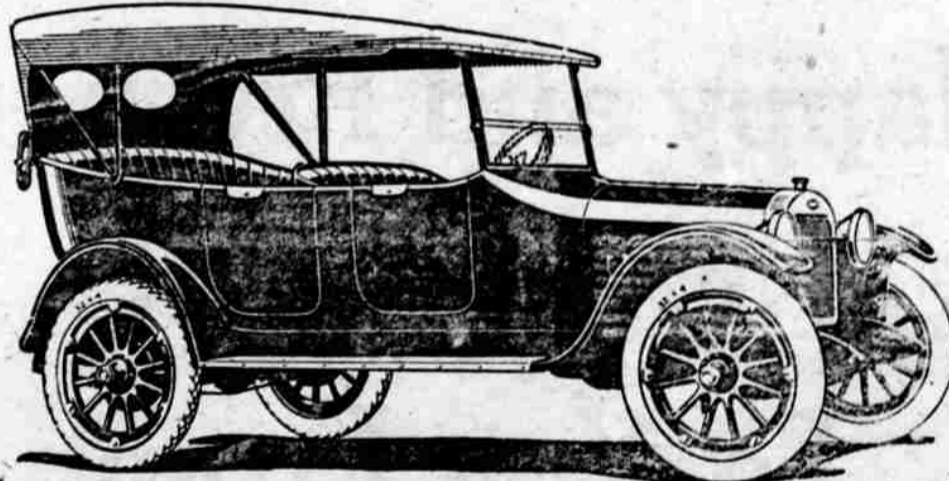
## REPUBLIC Motor Trucks

Three things to consider  
before buying a truck  
for the farm

- 1<sup>ST</sup>—LOW FIRST COST  
You get that in a Republic
- 2<sup>ND</sup>—LOW OPERATING COST  
You get that in a Republic
- 3<sup>RD</sup>—LOW REPAIR COST  
You get that in a Republic

What's more, you get a truck backed up by the reputation of the biggest maker of motor trucks exclusively in the world—you can't buy more in truck value.

UNINTERRUPTED Service and exceptional thrift are the salient characteristics of the Oakland Sensible Six Touring Car. Rough roads surrender to its masterful power, and emphasize the unusual riding comfort of this able, roomy car. And gasoline and tire mileages are uncommonly high. New car-load just received.

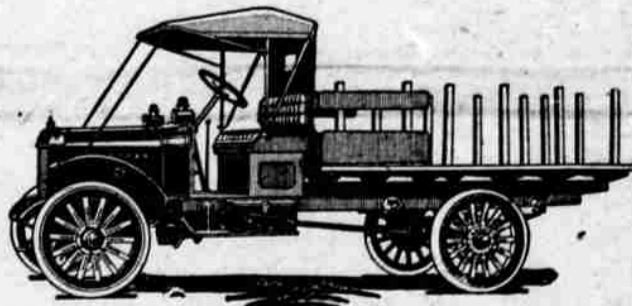


*Studebaker*  
Established 1853

### THE SPECIAL SIX

EQUIPPED with a powerful, highly economical and efficient 50 H. P. split-head motor, of Studebaker design and manufacture, with improved carburetor and hot-spot intake manifold, this Series 20 Special-Six gives every assurance of a car ready for any emergency. Its 119-inch wheelbase makes possible the comfortable, roomy, five-passenger touring car body and the beautifully appointed Sedan or Coupe. Even with its high-powered motor and spacious body the SPECIAL-SIX touring car weighs but 2850 pounds.

Its standard equipment is complete, including cowl lights at the corners of the windshield; walnut steering wheel and instrument board of the same finish; outside and inside door handles; tonneau light with convenient extension; genuine leather upholstery; Gypsy top with oval plate glass windows in the rear; and cord tires. The body is a beautiful Studebaker dark blue.



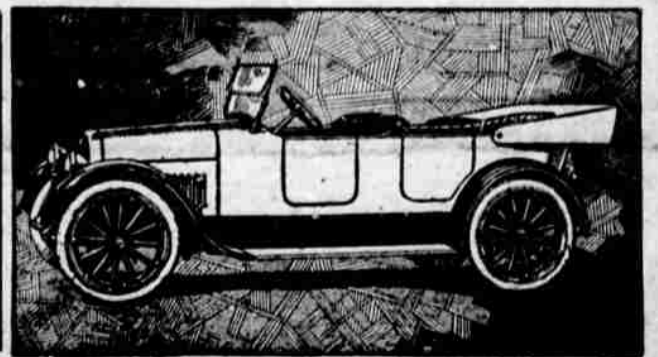
### SERVICE and SELLING

In buying a car there is more to consider than merely the quality of the car you are about to purchase. The firm back of the car you buy is just as important as the car itself. This brings in the big word—

### SERVICE

Our own names in this community means more to us than mere dollars. When you buy a car here you can depend upon it that it is a good one or we would not handle it. And the treatment after we have sold it to you and have your money is an important item. This is one of the reasons for our unusual success in this business.

Come and talk to us about the car you need.



# The Albany Garage

G. T. HOCKENSMITH

Foot of Ellsworth Street

LLOYD TEMPLETON

Tires, Gas, Oils—Goodyear Service Station—Accessories, Auto Repairing