



Well, it is just a hop, skip and a jump now until

## THANKSGIVING

Get your table linen and napkins now. You will have plenty of time to get them in good shape for the big dinner. We have an especially large assortment of



## Imported Table Linens

Fortunately our shipment of imported table linens came through alright from Belfast, Ireland. Never have we had as extensive a showing.

- Imported, all linen table linen, plain and figured, 72 inches wide, price per yard — \$1.00, \$1.25, \$1.50, \$1.75, \$2.00, \$2.25, and \$2.50
- Napkins, all linen, sizes 22x22 inches to 27x27 inches, price per doz. — \$3.00 to \$15.00
- Linen sets, consisting of one table cloth and one dozen napkins to match, price per set. — \$7 to \$30
- Table cloths in individual patterns, — \$3.50 to \$18.00
- Napkins to match individual cloths, per doz., — \$3.50 to \$18.00
- Unbleached table linens, per yard — 75c to \$1.50
- Mercerized damask, price per yard — 40c to 85c

**WEDNESDAY SPECIALS**—this week. Table linen, 72 inches wide, regular price \$1.50, Wednesday only \$1.19. Napkins regular price per dozen \$4.50, Wednesday only, per dozen,



**MEN'S SHOES**—We make a specialty of men's and boys' shoes. Also rubber boots and rubbers are here in best quality and priced economically.

**\$3.79**

Remnants Are Half Price Wednesdays Watch for Our Wednesday Specials

**Hamilton's**  
THE POPULAR STORE FOR THE PEOPLE  
VALUES for CASH WORTH WHILE

Deliveries Leave Store Morning 1st 8:30; 2nd 10:30; Afternoon 1st, 2; 2nd 4:30

## WESTERN WALNUT ASSN. TO HOLD FIRST CONVENTION

Will Meet at Portland Wednesday and Thursday; Albany Will Be Represented.

The first annual convention of the Western Walnut Association will be held at the Imperial Hotel Portland, Wednesday and Thursday of this week. Frank Eyraud and W. A. Leadbetter, of the Albany Nurseries Co., will attend from this city. The walnut is the greatest of all nuts, and it is an interesting fact that the price is increasing rather than decreasing, calling for a larger production of nuts. It is being demonstrated that this is a splendid English walnut country, calling for its development. At this convention there will be addresses by the leading walnut experts of the N. W., treating of the industry, planting, cultivation, varieties, distribution, harvesting and marketing, irrigation nuts, etc. J. C. Cooper, of McMinnville, is president, and H. V. Meade, of Orenco, secretary and treasurer.

## GOT \$187 AFTER THREE YEARS

On Account of an Error, Harrisburg Failed to Get School Money for Long Time.

Harrisburg Bulletin: Through the efforts of Supt. Gooding the school district has received \$187 in cash which was withheld from this district three years through an error of a bookkeeper in one of the county offices. While in Albany one day last summer looking up other school statistics Supt. Gooding learned of the bookkeeper's error whereby \$187 of this district's money had been paid to an adjoining district. Later the mistake was discovered by the county officials who ordered the clerk of the other district to pay this district. This he failed to do. The local board had never been notified of the amount due the district and hence knew nothing of the matter. The county officers concerned thought the payment had been made three years ago. Supt. Gooding and the local board took the matter up and last week received the amount due the district.

## Cracked Blade

Bob Stewart had a shoulder blade cracked in the game Saturday and is nursing the arm, hoping to get it ready for the game Thanksgiving.

## Tamales and Oysters

First of The Season at **POTT'S CONFECTIONERY** 316 W. 2nd St.

Home Phone 1113  
Our Tamales are home made, fresh and unexcelled any place.

Best oyster cocktails in the city.

## For Sale or Trade

67½ Acres in Tillamook county, including all stock and tools, will trade for 40 or 50 acres in the valley.

Also 60 acres, party desires to exchange for valley farm, this is also in Tillamook. 90 acres located 4½ miles N. E. of Lebanon, will trade for business property in Albany, or Corvallis.

15 acres 5 miles S. E. of Albany, will trade for other property. 920 acre wheat ranch near Condon, Gilliam county, will trade for hotel, stock of furniture, or business properties in the valley.

Several pieces of property in Albany, will exchange for property in Corvallis.

8 acres tillable land at Brownsville, including a 13 room rooming and boarding house in good condition, 6 acres in orchard and berries, bearing, good barn. Price \$4000. A bargain, on easy terms.

I also have other city properties and country properties for sale and exchange. Write or call on me for particulars.

J. A. HOWARD.

## Morgan Improving.

(By United Press) New York, Oct. 30.—Morgan is reported to be "progressing nicely." Passed a comfortable night. Condition is satisfactory, the physicians explained.

## The King Better.

(By United Press) London, Oct. 30.—The king, who was injured by a fall from his horse during a troop review in France, is improving, it is officially announced. His majesty had some sleep, his pain is less, temperature and pulse normal, according to physician's bulletin.

## EUGENE IN FAVOR OF BRIDGE

600 Signatures Secured in That City. Petition to Be Presented in Eugene This Week.

Harrisburg Bulletin: The delegation of local people who went to Eugene last Saturday to secure signatures for the bridge petition secured over 600 names. Almost every business man in Eugene was willing and glad to sign, and not a single man who had ever crossed on the ferry and was familiar with conditions, refused to sign and give the boys a boost.

A small delegation will go to Eugene either Monday or Tuesday of next week to present the petitions.

## Going Out

of Picture business and will sell all pictures at half price. Come while picking is good.

## Rawlings

121 Broadalbin St. Albany, Or.

## VALLEY SHOULD NOT BE DISCRIMINATED AGAINST

The following is in line with what the Democrat published a few days ago.

There are twenty lumber mills in western Oregon, this side of Roseburg, that have a capacity of 2,250,000 feet of lumber per day. This does not include at least 100 small mills that put out from 10,000 to 20,000 feet per day. These twenty mills referred to are cutting now 1,000,000 feet per day, which means a shrinkage in the daily cut of 1,250,000 feet. For every thousand feet of lumber cut there is expended in logging and milling at least \$7 for labor. This falling off in the cut means a loss to labor of \$8750 per day. Seventy-five per cent of the small mills above referred to are not running, so it is safe to say that there is a daily loss to the Willamette valley at this time of \$10,000 in pay-

roll. One of the biggest handicaps to the mills of the Willamette valley has been their freight rates. Up until June 21 of this year the rate from Willamette valley to Utah territory was 40 cents per hundred pounds, while from Portland it has been 37½ cents. This is one of the best markets Oregon has for her lumber. For years the Willamette valley has been obliged to pay from \$12.50 to \$20.00 per car more than Portland mills to deliver lumber in Utah territory. On June 21 the Southern Pacific granted the valley a 37½ cent rate to this territory, thus placing valley mills on an equal basis with Portland. The Portland mills have now filed a complaint with the interstate commerce commission demanding that they be given a 2½ cent differential to this territory. W. B. Ayer, a Portland lumberman, is quoted in the Telegram as saying that this Utah territory is theirs and that this advantage of 2½ cents should not be taken away from them. The interstate commerce commission granted the valley mills a 17½

cent rate to main line points in California between here and San Francisco, which in a measure allows the valley to compete with water shipments to California from Portland and other coast points. The Southern Pacific voluntarily reduced Portland's rate from 25 cents to 21½ cents. The Portland mills are not satisfied with this but have filed a complaint with the interstate commerce commission asking that they be given this 17½ cent rate. If they were given this rate it means that they could compete with Willamette valley mills by rail and water. Most of it would go by water from Portland and thus cut Willamette valley mills out of a large part of this business.

**Manufacturers' and Land Products Exposition**  
Portland, Oct. 25-Nov. 13

**TUESDAY NOV. 2 ALBANY DAY**

2nd Annual of All-Oregon Products and Home Manufacturing Resources. Free space for counties assures splendid exhibits.

Presented by Portland Chamber of Commerce

**FAST FREQUENT TRAINS** and **REDUCED ROUND-TRIPS to PORTLAND**

**Oregon Electric Ry.**

Excursion Ticket sale dates: Oct. 26, 28, Nov. 2, 4, 9, 11. Return limit five days after sale date.

SPECIAL FEATURES AND COMMUNITY CELEBRATIONS EVERY DAY OF THE 18-DAY SHOW.

H. S. LOGAN, Agent, Albany, Oregon

**Going Out**  
of Picture business and will sell all pictures at half price. Come while picking is good.

**Rawlings**  
121 Broadalbin St. Albany, Or.

**Tamales and Oysters**  
First of The Season at **POTT'S CONFECTIONERY** 316 W. 2nd St.  
Home Phone 1113  
Our Tamales are home made, fresh and unexcelled any place.  
Best oyster cocktails in the city.

**For Sale or Trade**  
67½ Acres in Tillamook county, including all stock and tools, will trade for 40 or 50 acres in the valley.  
Also 60 acres, party desires to exchange for valley farm, this is also in Tillamook. 90 acres located 4½ miles N. E. of Lebanon, will trade for business property in Albany, or Corvallis.  
15 acres 5 miles S. E. of Albany, will trade for other property.  
920 acre wheat ranch near Condon, Gilliam county, will trade for hotel, stock of furniture, or business properties in the valley.  
Several pieces of property in Albany, will exchange for property in Corvallis.  
8 acres tillable land at Brownsville, including a 13 room rooming and boarding house in good condition, 6 acres in orchard and berries, bearing, good barn. Price \$4000. A bargain, on easy terms.  
I also have other city properties and country properties for sale and exchange. Write or call on me for particulars.  
J. A. HOWARD.

**Will Win or Die.**  
Paris, Oct. 30.—"Deviation of not one iota from the country's fixed purpose to win the war and crush German militarism," Premier Briand said, "will be the new cabinet's policy. It was the old ministry's platform and it will be ours. We will continue firmly on with our allies, with the common motto, 'Victory'."

**ART and VOICE STUDIO OPENED**  
I have secured suite 9 in the Schmitt-Hunt building, Third and Broadalbin, where I will be pleased to meet anyone contemplating taking instruction in oil painting. Rates are very reasonable, only \$1 for a three-hour lesson.  
Will also instruct a limited number in voice culture.  
Those desiring to take instruction in either Art or Voice, please make application as soon as convenient.

**W. W. Davis**  
Teacher of Art and Voice

**The Albany Bakery**  
We Deliver to Any Part of the City  
115-119 E. 3rd Street  
Bell 500 Party R. Home 419  
H. J. FIRCHAU CO.

**First Call for Christmas**  
Come before the rush is on and get Christmas present worries off your mind.  
SPECIAL—For a short time only we will give one large photo with every \$3 order or over.  
REMEMBER—Twelve presents for the price of one. If so desired orders taken now need not be called for until Christmas.  
**The Clifford Studio**  
"The Photographer in Your Town"

**LIGHTS GO OUT**  
soon at the dream city in San Francisco, for the **Panama-Pacific Exposition** closes **December 14, 1915**

You cannot afford to put off any longer your California trip. If you are interested in scientific fanning, in mining, in horticulture, in art; the study of these things at this exposition will aid you in a financial way.

LOW RATES are still in effect on the **Shasta Route**  
Write for our illustrated booklet "Wayside Notes"

**SOUTHERN PACIFIC**  
John M. Scott, General Pass. Agt  
Portland, Oregon

**ALBANY FUEL CO.**  
BOTH PHONES 277

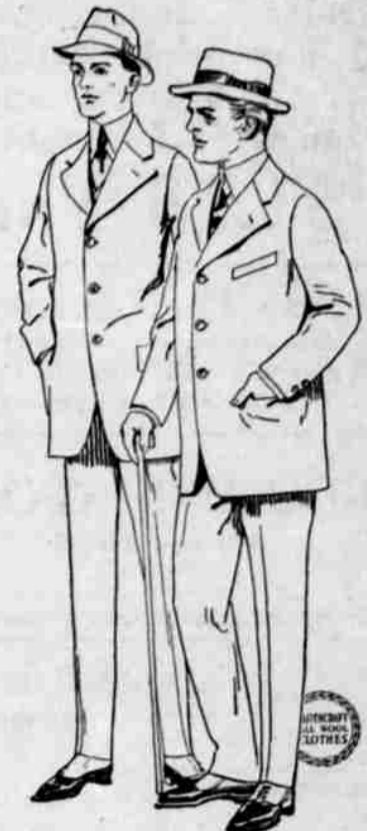
Having decided to run a transfer and storage business in connection with our fuel business, we will store your goods and do your team work.  
We have reliable men and our service is in all ways guaranteed satisfactory.

OUR PRICES:

Team work, per hour	50c
Slabwood, green, per cord	\$2.25
Slabwood, dry, per cord	\$3.00
Second growth fir, per cord	\$3.50
Old growth fir, per cord	\$4.00
Ash, per cord	\$4.25
Oak, per cord	\$4.75

We are agents for Castle Gate, Clear Creek and Mendota coal.

ADVERTISE IN THE DEMOCRAT—IT PAYS



# "Where Will I Buy My Fall Suit?"

Certainly at the store where your dollars are worth the most.

That means our store. We'll crowd your dollars just as full of value as possible, but not only in merchandise.

Service here is just as much a part of business as salesmanship itself—it's just the kind you would give were you in our place. It has made our store the choice of good dressers.

We know you'll like our methods.

Now, why not put us to the test, just to prove that our service is what we say it is.

Will you grant us this opportunity?

## THE BLAIN CLOTHING CO.

The Clothcraft Store

"Quality First"