

THE YAQUINA ROUTE.
Oregon Pacific Railroad
Development Company's Steamship Line.
125 MILES SHORTER.
20 HOURS LESS TIME
than by any other route.

First-class through passenger and freight line from Portland and all points in the Willamette Valley to and from San Francisco, Cal.

The Oregon Pacific steamboats on the Willamette river division will leave Portland, South bound, Monday, Wednesday and Friday at 6 a. m. Arrive at Corvallis Tuesday, Thursday and Saturday at 8:30 p. m. Leave Corvallis, North bound Monday, Wednesday and Friday at 5 a. m. Arrive at Portland Tuesday, Thursday and Saturday at 3:30 p. m. On Monday, Wednesday and Friday, both North and South bound boats will be over night at Astoria, leaving here at 6 a. m.

Boats make close connection at Albany with trains of the Oregon Pacific Railroad.

TIME SCHEDULE (except Sundays)

Leave Albany 1:00 P. M.	Leave Yaquina, 6:45 A. M.
Leave Corvallis 1:10 P. M.	Leave Corvallis, 10:30 A. M.
Arrive Yaquina, 5:30 P. M.	Arrive Albany, 11:15 A. M.

O. & C. trains connect at Albany and Corvallis. The above trains connect at Yaquina with the Oregon Development Company's Line of Steamships between Yaquina and San Francisco.

SAILING DATES.

FROM YAQUINA.	
Willamette Valley, Tuesday, Oct 1st	do Saturday, Oct 12th
do do Wednesday, Oct 2nd	
FROM SAN FRANCISCO	
Willamette Valley, Monday, Oct 7th	do Friday, Oct 14th
do do Tuesday, Oct 8th	

The Company reserves the right to change sailing dates without notice. N. E. Passengers from Portland and Willamette Valley points can make close connection with the trains of the Yaquina route at Albany or Corvallis, and it desired to San Francisco should arrange to arrive at Yaquina the evening before date sailing.

Freight and Freight Rates always the lowest. For information apply to A. H. Chapman, Freight and Ticket Agent, Albany, or to C. H. Maxwell, Jr., O. P. Agent, Oregon Development Co., 24 Montgomery St. San Francisco, Cal. A. G. F. and P. Agent, Corvallis.

OVERLAND TO CALIFORNIA
VIA
Southern Pacific Company's Line.
THE MOUNT SHASTA ROUTE.

Time between Albany and San Francisco, 55 hours
CALIFORNIA EXPRESS 31 MINS. (EXCEPT SUNDAY)
Between Portland and San Francisco.

OUTH	PORTLAND	ALBANY	SAN FRANCISCO
4:00 P. M. Lv	Ar 10:15 A. M.	Lv 6:45 A. M.	Ar 12:00 P. M.
8:15 P. M. Lv	Ar 10:15 A. M.	Lv 7:00 P. M.	Ar 12:00 P. M.
7:45 A. M. Lv	Ar 10:15 A. M.	Lv 7:00 P. M.	Ar 12:00 P. M.

LOCAL PASSENGER TRAIN DAILY (EXCEPT SUNDAY)

OUTH	PORTLAND	ALBANY	KEWEE
10 A. M. Lv	Ar 11:30 A. M.	Lv 11:30 A. M.	Ar 12:00 P. M.
2:40 P. M. Lv	Ar 11:30 A. M.	Lv 11:30 A. M.	Ar 12:00 P. M.
3:40 P. M. Lv	Ar 11:30 A. M.	Lv 11:30 A. M.	Ar 12:00 P. M.

LEBANON BRANCH.

OUTH	ALBANY	LEBANON
6:20 P. M. Lv	Ar 6:50 A. M.	Lv 6:50 A. M.
7:50 P. M. Lv	Ar 6:50 A. M.	Lv 6:50 A. M.
1:30 P. M. Lv	Ar 6:50 A. M.	Lv 6:50 A. M.
2:20 P. M. Lv	Ar 6:50 A. M.	Lv 6:50 A. M.
7:30 A. M. Lv	Ar 6:50 A. M.	Lv 6:50 A. M.
8:30 A. M. Lv	Ar 6:50 A. M.	Lv 6:50 A. M.

PULLMAN BUFFET SLEEPERS.
Tourist Sleeping Cars,
For Accommodation of Second-Class Passengers, attached to Express Trains.

The S. P. Co's ferry makes connection with all the regular trains on the East Side Division from foot of F Street, Portland.

West Side Division.
BETWEEN PORTLAND AND CORVALLIS.

MAIL TRAIN DAILY (EXCEPT SUNDAY)

OUTH	PORTLAND	CORVALLIS
7:20 A. M. Lv	Ar 6:30 P. M.	Lv 6:30 P. M.
12:20 P. M. Lv	Ar 6:30 P. M.	Lv 6:30 P. M.

EXPRESS TRAIN DAILY (EXCEPT SUNDAY)

OUTH	PORTLAND	MCMINVILLE
4:20 P. M. Lv	Ar 12:00 A. M.	Lv 12:00 A. M.
4:00 P. M. Lv	Ar 12:00 A. M.	Lv 12:00 A. M.

Through Tickets
To all points
SOUTH AND EAST
VIA CALIFORNIA.

For full information regarding rates, fares, etc. call on Company's Agent at Albany.
R. KOEHLER, E. P. ROGERS, Manager, Albany, O. P. and P. Agent.

House and Carriage Painter
Decorator and Paper Hanger
Piano Varnishing.
All work guaranteed.
S. B. VASSALLO.
Successors to Henry Swenson.

Revere House;

ALBANY, OREGON
CHAS. PFEIFFER PROPRIETOR.
Fitted up in first-class style. Tables supplied with the best in the market. Nice sleeping apartments. Sample rooms for commercial travelers.
Offer a Coach to and from the Hotel.

Poultry Wanted.

All kinds of poultry, alive or dressed, wanted at the Willamette Packing Company's Store, Albany, Oregon.

JULIUS GRADWOHL'S
Golden Rule Bazaar.

His stock has been enlarged so that it equals any on the Coast, and consists of

Roger Bros. Silverware, Fancy Goods, and a general assortment of Crockery and Toys.

He buys direct and carries the largest stock in the Willamette Valley, to which has been added a complete line of

FAMILY GROCERIES.

is Agent for insurance companies with a capital aggregating \$75,000,000.

WILL & LINK

Dealers in all the Leading

Guns, Pistols, Sewing Machines, Organs and Pianos

A full line of sheet music, musical merchandise, ammunitions, fishing tackle, etc. Warranted razors, butcher and pocket knives. The best kind of sewing machine needed. Oils and extras for all machines supplied.

Repairing of sewing machines, musical instruments, guns, etc., neatly done.

ALBANY; OREGON.

DR. J. L. HILL,
Physician and Surgeon,
Office—cor. First and Ferry Streets,
ALBANY- OREGON

DR. G. WATSON MASTON
Physician and Surgeon.
Office opposite the Despatch.

DR. W. H. DAVIS,
Physician and Surgeon.
Office up stairs by Strahan's Block.
May be found at his office day and night.

DR. G. A. WHITNEY,
Physician and Surgeon.
Graduate of Bellevue Hospital Medical College New York City.
Diseases of woman a specialty.
Office, Fremont's Brick, Albany, Or.

DR. I. W. STARR,
Physician and Surgeon,
Late of Brownsville, Or.
Office at rooms Nos. 33 and 34, Strahan and Pierce's Block, up stairs. Calls promptly attended in city or country.

G. L. SLACKMAN,
Successor to E. W. Langdon,
DEALER IN
DRUGS, MEDICINES
CHEMICALS, BRUSHES
SOAPS COMBS
ETC.

D. R. S. BLACKBURN, GEO. W. WRIGHT,
BLACKBURN & WRIGHT,
Attorneys at Law,
Will practice in all the Courts of the State. Prompt attention given to all business entrusted to our care.
Office Odd Fellows Temple, Albany, Or.

FOSHAY & MASON,
Wholesale and Retail
Druggists and Booksellers,
Agents for John B. Alden's publications, which we sell at publisher's prices with postage paid.
ALBANY, OREGON

J. J. DORRIS,
ALBANY, OREGON.

ABSTRACTER.
The Only Complete Set of Abstract Books and Maps in Linn County.
Office in the Court House.
Business entrusted to my care shall have prompt and careful attention.

W. R. BILYEU,
ATTORNEY AT LAW
And Solicitor in Chancery,
ALBANY, OREGON.
Collections promptly made on all points. Loans negotiated on reasonable terms.

First National Bank
OF ALBANY, OREGON.
President..... FLANN
Vice President..... S. E. YOUNG
Cashier..... E. W. LANGDON.
TRANSACTS A GENERAL banking business.
ACCOUNTS KEPT subject to check.
SHORT EXCHANGE and telegraphic transfer, to New York, San Francisco, Chicago and Portland.
COLLECTIONS MADE on favorable terms.
DIRECTOR:
E. YOUNG, R. W. LANGDON,
L. BLAIR, WALTER E. TURNELL.

Linn County Bank,
Cowan, Balston & Chamberlain,
ALBANY - - - OREGON.
TRANSACTS a general banking business.
DRAW SIGHT DRAFTS on New York, San Francisco and Portland, Oregon.
LOAN MONEY on approved security.
RECEIVE deposits subject to check.

Bank of Oregon,
ALBANY, OREGON.
CAPITAL, \$50,000.
President..... H. BRYANT
Vice President..... J. W. BLAIN
Cashier..... H. P. MERRILL
Sight exchange and telegraphic transfer on New York, San Francisco and Portland, Oregon.
Collections made on favorable terms.



For sale by Will & Stark, dealers in fine watches, jewelry, etc.

J. J. WHITNEY,
Notary Public,
ALBANY, OREGON
Will practice in all of the Courts in this State. All business entrusted to me will be promptly attended to.

BROWNSVILLE
O. P. CASHOW & SONS,
Real Estate and Insurance Agents.
Real estate sold and Collections and Notarial business attended to.

J. K. WEATHERFORD,
ATTORNEY AT LAW,
ALBANY, OREGON.

E. J. MCCAUSTLAND,
Civil, Sanitary and Hydraulic Engineer.
Consulting engineer for Gold Mountain and Dry Gulch Consolidated Gold and Silver Mining Co.
Office, First Street, Albany, Or.

BABY CARRIAGES
AT
STEWART & SO

Stockholder's Meeting.
Notice is hereby given that there will be a meeting of the Stockholders of the Linn County Agricultural Association held at the Court House in Albany, Oregon, on Thursday, the 2nd day of January 1900, for the purpose of hearing reports of officers and also for the purpose of electing seven directors to serve for said association the ensuing year and for the transaction of any other business that may come before said meeting.
Dated this 30th day of Nov., 1899.
C. P. DEERHET,
Stockholder.

Educate
For business purposes at the Portland Business College, Portland, Oregon, or at the Central Business College, Salem, Oregon. Both schools are under the management of A. P. Armstrong, have complete course of studies and same rates of tuition.
Business, shorthand,
Accounting, Penmanship and English Department. Day and evening sessions. Standard printed of any time. For joint Catalogue, address Portland Business College, Capital Business College, Portland, Oregon, OR Salem, Oregon.

W. L. JESTER, Agent S. P.

City Meat Market.
SHULTZ BROS., Proprietors.
Keep a full line of meats of all kinds, in a cool place, completely protected, and always fresh.
Also have constantly on hand salmon and other fish.
PAINTS, OILS, AND BRUSHES AT DEYO & ROBSON'S

Fine line of Guns and good stock of Ammunition at Deyoe and Robson's special bargains

At Cost

TO MAKE ROOM FOR MY LARGE STOCK OF FALL AND WINTER GOODS WILL SELL MY ENTIRE STOCK OF

BOOTS AND SHOES.

AT COST THIS WILL BE A CLOSING OUT SALE, AND THEY MUST GO. COME EARLY AND GET

Real Bargains.

AT THE SAME TIME DO NOT FORGET THAT I HAVE A COMPLETE STOCK OF

DRY GOODS

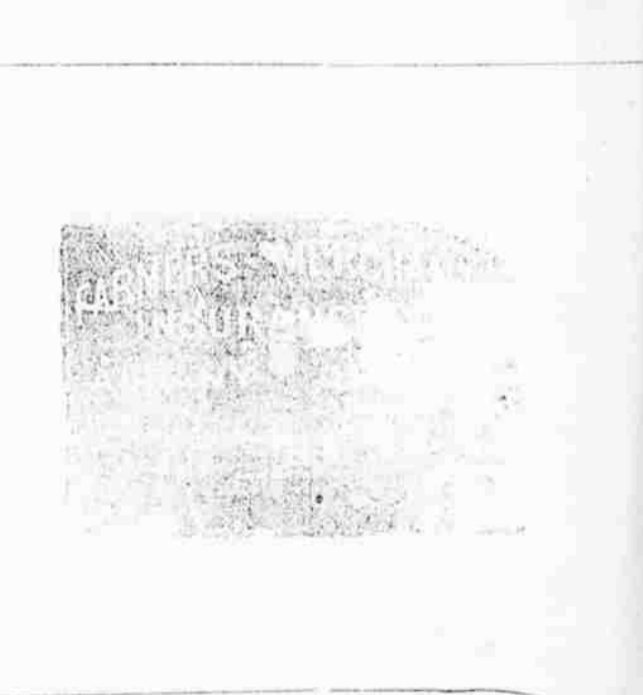
Notions, Furnishing Goods, etc,

WOULD ESPECIALLY CALL YOUR ATTENTION TO THE FOLLOWING LINES:

Dress Goods, Trimmings, Silk, Table Linen, Gloves, Hosiery, Fancy Goods, etc

ALL AT LOWEST CASH PRICE.

RESPECTFULLY,
W. F. READ,
The Leading Cash Dry Goods Store.



HOPKINS & SALTMARSH
—DEALERS IN—
STOVES; TIN WARE SHEET IRON, COPPER WARE
ETC., ETC.

Agents for "On Time" Heating and Cooking Stoves. Job work, plumbing, etc., promptly attended to.
CHEAPEST AND BEST PLACE IN THE CITY

SMOKE THE CIGARS
Manufactured by Julius Joseph
—ALSO—
IMPORTED AND KEY WEST CIGARS
Plug and smoking tobacco, Meerschaum and briar pipes and smoke articles generally.