

WEEKLY COAST MAIL

VOL XXVII.

MARSHFIELD, COOS COUNTY OREGON, February, 20, 1904

No. 8

JAPANESE INTERCEPT THE COPTIC

German Warship Goes to Port Arthur After German Subjects Who Have Been Fired on

(Special to the Coast Mail.)

Rekin Feb 16—Everything indicates that the neutrality of China cannot long be maintained. The Dowager Empress has dismissed Prince Su who was the strongest advocate of neutrality. She believes China is at stake in the war and that it will be necessary to prepare to avoid the absorption by either victor. The result may be that China will act independently and take arms against both Japan and Russia.

Nagasaki, Feb. 16—The Japanese navy has intercepted the British steamer Coptic, bound from San Francisco to Port Arthur. They took all food supplies which were purchased by Russia. The cargo consisting principally of canned goods.

St Petersburg Feb. 16—Russia will make her great military demonstration on the Yalu river.

Officials are recovering from their first amazement and now are rearranging this plan of campaign which will for the present time be on the defensive.

It is confidently believed that Port Arthur is impregnable.

The first step in the advance will be on the Yalu river.

Russian diplomats now believe the Hay note to be harmless. A semi-official message from General Alexieff's headquarters states that the German cruiser Hansa went to Port Arthur today to remove the German residents who have been fired on by the Japanese warships.

GREAT SUFFERING IN RUSSIA

THERMOMETER RANGES BELOW ZERO

Great Suffering of Russian Troops in Transit From the Frontier to the Seat of War

(Special to the Coast Mail.)

St Petersburg, Feb. 17—The frontier Russian troops which are being sent to the far east are encountering insurmountable difficulties. They are being sent in ordinary freight cars, 25 men in each car with a small stove in the center of the car for warmth. The fuel used being gathered up as stoves are made enroute.

Sledges are still being used, across lake Baikal. The continuous storm causes great delays and deadly frostbites. The Missoyaga are inadequate to contain the large numbers sent there and beyond that traffic is demoralized. Food is scarce, as the plague killed all of the

Mongolian cattle during the past season. Manchurian Russians control only the land within the range of their rifles. Officials declare that any serious blockade of the railway is liable to put troops to awful suffering. The temperature is ranging from 30 to 60 below zero.

Berlin Feb. 17—The Vossische Zeitung today states when the news of Japan ruptured relations with Russia reached St Petersburg the foreign minister Lamedorf, knowing that Russian unpreparedness, fainted from the shock. The Czar explained this was a veritable catastrophe.

Official Proclamation

GIVEN OUT BY THE RUSSIAN GOVERNMENT

Throws Blame For War Upon Japan, Counsels Patience and Promises Vengeance

(Special to the Mail.)

St Petersburg, Feb. 18—An official proclamation was issued today, in which the government says: "Eight days have elapsed since Russia was shaken in profound indignation, against the enemy, who suddenly broke off negotiations, by a treacherous attack whereby it endeavored to obtain an easy success in a war long desired."

"The Russian nation, in natural impatience, now desires prompt vengeance and awaits nervously the news from the far East. The unity and strength of the Russian people leave no doubt that Japan will receive the chastisement deserved, for their treachery and provocation to war at a time when we desired to maintain peace with all nations."

"The conditions under which the hostilities are being carried on compel us to wait with patience news of the success of our troops which cannot occur before decisive actions are fought by the Russian army. Distance of territory and the desire of the Russian Emperor to maintain peace and other causes made it impossible to complete earlier preparations for war."

"Much time is now necessary in order to strike Japan, but the worthy might and dignity of Russia, make it necessary while sparing as much as possible the shedding of the blood of her children, to inflict a just chastisement upon the nation which provoked the struggle. "Russians must await the event with patience, being sure the army will avenge the proceeding a hundred fold. Operations by land must not be expected for some time, and we cannot obtain early news from the seat of war."

The proclamation closes with the declaration that true news will immediately be given out when received. The general staff today announced that the war office was willing to accept volunteers under 40 with military training.

Rome Feb. 18—The Russian embassy here is authority for the statement that the Japanese fleet has established a base of supplies at Elliott Islands, at the coast of the Liaoning Peninsula, 75 miles from Port Arthur. This tends to show that Japan is preparing a great joint attack for the reduction of Port Arthur.

PREPARATION FOR HANNA'S FUNERAL

(Special to the Coast Mail.)

Washington, Feb. 16—The entire city is sorrowing over the death of Senator Hanna, no other topic of conversation among the people. A conference was held this forenoon at the Arlington by H. M. Hanna, Dan Medill and Mrs. McCormack, at which the details of the funeral were determined upon.

The body will be taken to the capitol building tomorrow morning and laid in state in the Marble room of the senate until noon, when official services will be held in the senate chamber. Captain Hale conducting the services and the Gridiron Club's quartet will sing the desired hymns.

From the president down to the minor officials all the people in Washington will be present. The representatives will march over from the house in a body to participate.

The Senate and House today will appoint committees to officially represent them, both here and at the interment at Cleveland. The senate committee will number 20. At the White House the entire Ohio delegation, and others may be appointed by Cannon. It is expected that three special trains will constitute the funeral cortege from Washington to Cleveland, leaving Wednesday afternoon. The first will carry the remains of the deceased and family. The second will carry the senators and the third the representatives. It has not yet been fully decided whether the president and cabinet can accompany the funeral parties. It has been decided that all will leave here at 6 o'clock Wednesday evening.

BUILDING BUILT BY BEES

(Special to the Coast Mail.)

St. Louis, Feb. 16—A "print shop" built of honey will be one of the things to be seen at the World's Fair. H. F. Stapel, editor of the Rock Port Mail, is the architect and his bees are the builders.

A year or two ago Mr. Stapel erected a handsome office building. Last summer he conceived the idea of reproducing, in the miniature, his building in honey. He placed a hive in exact imitation of the Stapel block, and then his bees got busy. In a few months every facade, and every nook and corner, was covered with a thick coating of pure Missouri honey. This odd exhibit will be housed in the Missouri display in the Palace of Agriculture.

HEARING IN PANAMA CASE

(Special to the Coast Mail.)

Paris, Feb. 17—The first tribunal of the Seine today began the hearing of the case of the Republic of Columbia against the Panama Canal Company.

MARSHFIELD BOARD OF TRADE ORGANIZED

For Effective Work to Bring the Town to the Front in the March of Progress

At the meeting held Wednesday evening for the purpose of organizing a Marshfield Board of Trade the following persons were present: J. W. Bennett, H. Lockhart, F. A. Seebel, J. R. Rochon, L. R. Robertson, Geo. N. Farrin, Dr. Straw, J. W. Flanagan, Wm. Nasberg, John F. Hall, Alex. Campbell, Dr. Tower, Chas. Struff, J. H. Milner, J. A. Matson, E. L. C. Farrin, W. P. Murphy, F. M. Friedberg, E. B. Seabrook, — McClure, O. F. McKnight, H. Sengstacken, Hugh McLane, F. S. Dow, J. H. Flanagan, F. P. Norton, C. E. Nicholson, W. A. Toye, Nels. Rasmussen, J. T. Hall, D. D. Campbell, and a representative of the COAST MAIL.

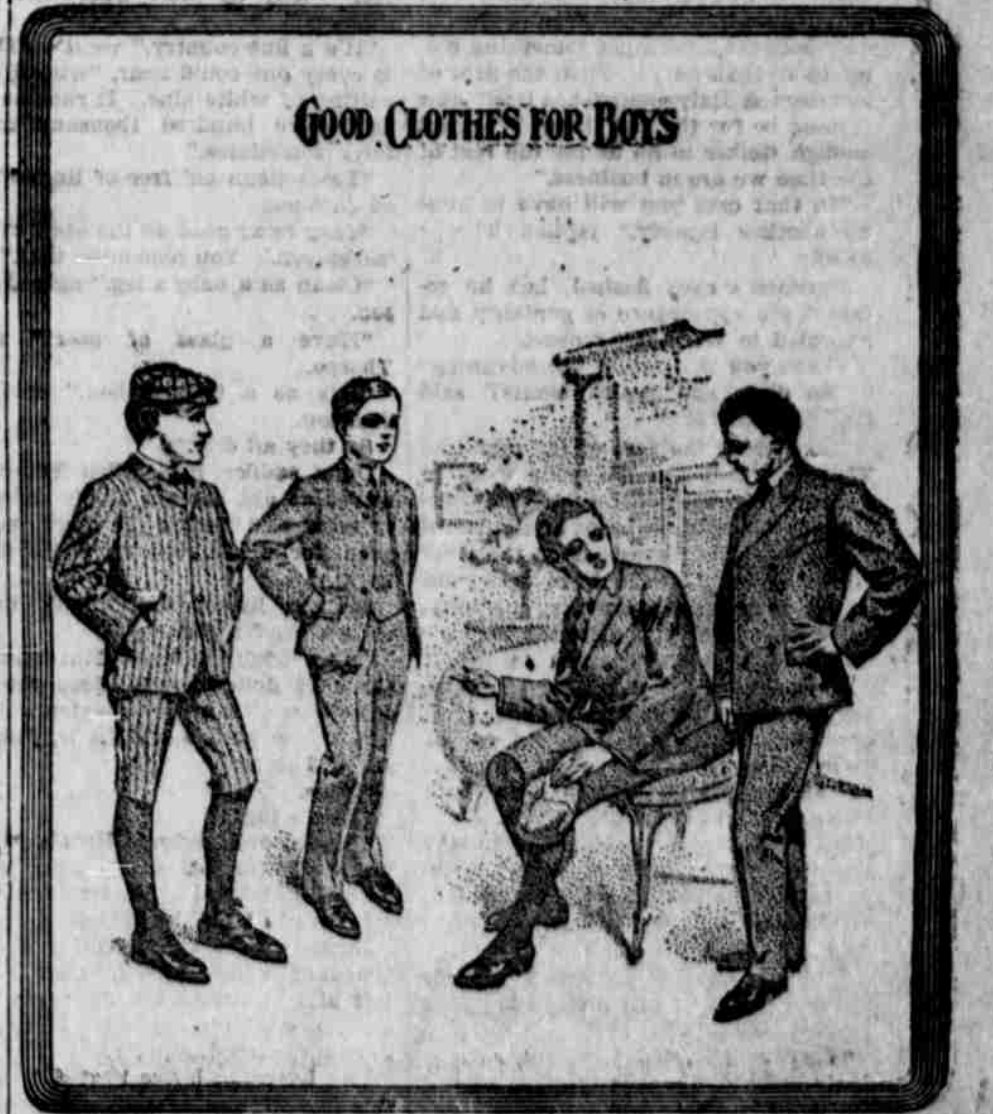
It is most encouraging to note that such an array of the active business and professional men of the town turned out on short notice and evinced such a lively interest in the matter of the formation of an organization to look out for the interests of Marshfield, and see that she gets her share of the good things going.

There was no difference of opinion as to the advisability of the proposed movement, but all seemed enthusiastic

in favor of it. Nearly every one had something to say to help the thing along, the remarks of Messrs. Matson and Nasberg being especially to the point.

There was considerable difference of opinion as to the proper sums to be named as initiation fee some favoring \$25, some \$10 and some between the two. Those advocating \$25 were Friedberg, Straw, Matson; those favoring \$10 were Robertson, Dow, Sengstacken, Seebel, and Bennett; J. H. Flanagan and Norton thought \$15 about right; Tower advised a good liberal initiation fee and good dues, to provide ample funds to work with; Seabrook thought the committee should figure out which would bring in the most money, and showed that a small membership at a high fee would not bring in so much as a larger membership at a smaller initiation fee, dues being the same; Murphy made the original suggestion that the fee should be graduated according to the amount of

Continued on 4th page.



NEW LINES, EXTENSIVE VARIETIES, CHOICE VALUES.
.....Magnes & Matson.....