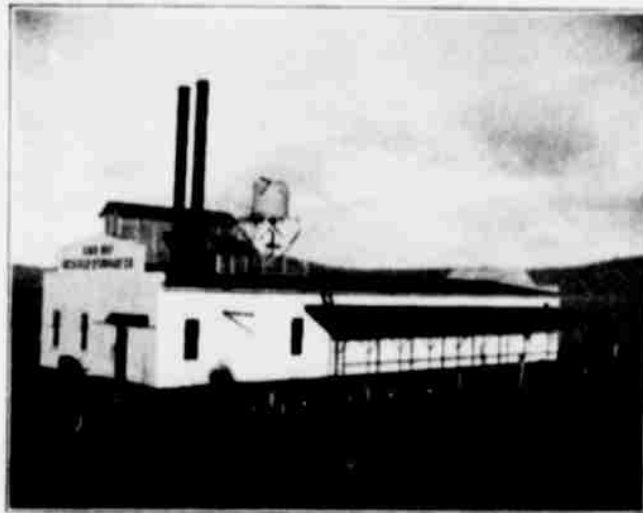


TOWNS

THE chief towns of Coos County are Marshfield, North Bend and Empire on the bay, and Bandon and Coquille and Myrtle Point on the Coquille river. They are all located on navigable water and have communication with the interior by means of regular stage lines. Coquille is the county seat.

MARSHFIELD—The largest in population, numbering 2,300 people, is the chief commercial town. It enjoys a daily mail, has Western Union telegraph office, local and long distance telephone, a gravity water system, a bank, electric lighting plant, a volunteer fire department, one daily and three weekly newspapers.



ICE & COLD STORAGE PLANT, MARSHFIELD

It has a fine school building, which is the home of an excellent graded and high school, and the leading church organizations are represented and have their places of worship.

NORTH BEND—Under the able leadership of Mr. L. J. Simpson, is rapidly coming to the front as a manufacturing town. Two large saw mills, in constant operation, employ a large force of men at the mills and in the logging camps. A large woolen mill is just completed here, also a sash, door and blind factory, and other enterprises of like character are in contemplation. Many buildings have been constructed here the past few months, and the starting of the mills and factories now building will add materially to the population of this place. Water pipes have been laid to furnish a water supply, and it enjoys the usual city advantages.

BANGOR—An organization known as the Bangor Townsite and Improvement Company, has platted a town on the peninsula formed by the bend in the bay, just west and across Pony Slough from North Bend, as shown on the map herewith, called Bangor. The tide lands at the mouth, or outlet of Pony Slough, furnish a fine place for the terminal grounds for a railroad. A corporation known as the Great Central Ry. Co. was organized in Portland in 1902 for the purpose of building a railroad from Salt Lake City to this point, and Mayor L. D. Kinney, the promoter of the enterprise, is devoting his energies to the project. Considerable money has been expended in improving the townsite and in grading for a belt line road around the bay.

EMPIRE—Needs only the starting of the big saw mill (one of

the largest on the Coast) to make it a hive of industry. It is beautifully located about four miles up the bay from the entrance, and the United States Custom House is located here.

OUT DOOR LIFE

COOS COUNTY is truly the sportsman's paradise. In this section deer, elk, bear, cougar, lynx, coon, beaver and other wild animals are numerous. The elk, the king of game animals, which is fast becoming extinct, still roams the woods at the head waters of the Coos and Coquille rivers in large herds. As many as fifty of these noble animals have been seen in a single herd in this locality within the past year.

The various rivers and sloughs and the sand hill lakes, of which there are a large number, abound in trout, shad and salmon, while the bay teems with flounder, perch, tom cod, sardines, crabs, etc., while the tidal flats abound with clams of many varieties. Deep sea fishing on the banks outside the bay is beginning to form an important industry, in addition to affording excellent sport to daring anglers.

Wild ducks, geese, brant, and snipe are found in countless numbers on the bay and the various sloughs and rivers, as well as in the sand hill lakes, where water towls remain all summer and rear their young. Quail, grouse and pheasants are also numerous in the



A BEACH SCENE

river valleys and foot hills.

The beautiful beaches of Coos County, among which Sunset Bay, Big Creek Bay, South Bay and Bandon Beach are notable, are destined to become prosperous summer resorts, with the advent of better transportation facilities with the outside world.

GOVERNMENT LANDS

IN the last two years a large amount of timber lands have been purchased by individuals and corporations, but there is still considerable unsurveyed land, having from four to fifteen million feet of good, merchantable timber to the claim. There is still 114,000 acres of land open to entry in the county.

We are sorry that lack of space has compelled us to cut so short our descriptive matter under the different heads. Columns might be written where we have room for only paragraphs, on this folder. Our corresponding secretary will see that all inquiries for definite information will have attention. Write him.

COOS BAY CHAMBER OF COMMERCE.

