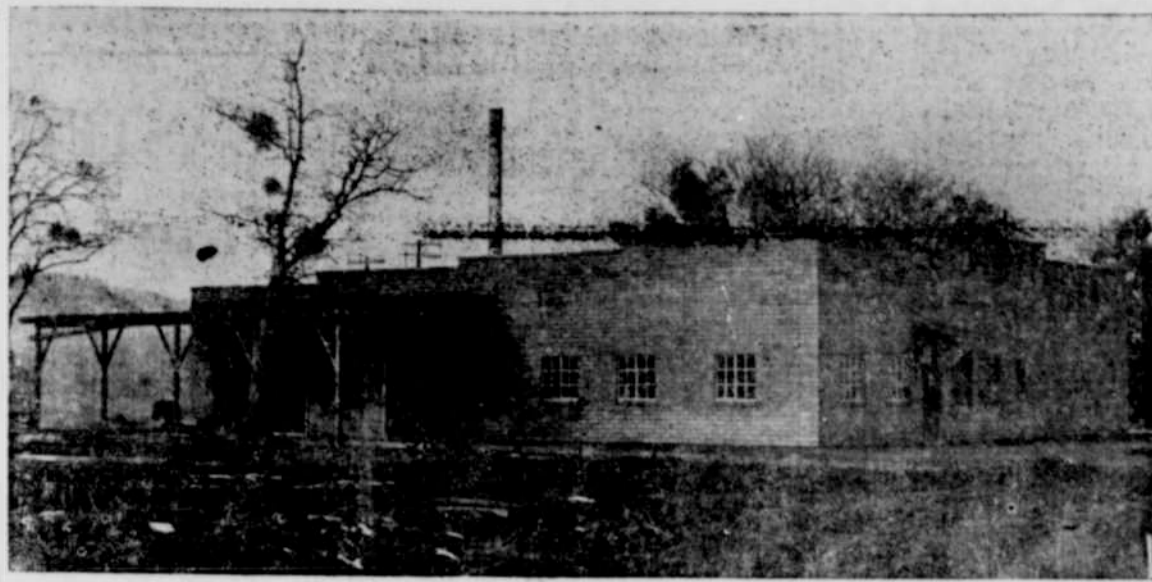


### Cheese Factory Now Running Under New Management



The Sonoma Valley Cheese Factory No. 3 located on the Pacific Highway in Central Point, is once more in full operation. The plant was recently purchased by Mr. G. Vella, of California, who owns two other factories in the Sonoma valley. Mr. Vella completely overhauled the

local plant and added quite a lot of new equipment.

The newly organized cheese factory is associated with the Kraft company, which markets the output of the local plant. A large amount of milk is brought to the factory daily, although Mr. Vella states he could handle a good deal more. At present

one truck is employed to haul milk from distant parts of the valley.

The above cut of the factory was made several years ago during the winter months and since then the grounds have been landscaped and a lawn and shrubbery planted. Also a new sign has been painted on the front of the building.

### Swallows Appear On Due Schedule

SAN JUAN CAPISTRANO, Calif., March 26.—(Sp.)—The swallows winged wanderers of Mission San Juan Capistrano, came home on Thursday to the adobe walls that have received them on March 19, St. Joseph's day, for 70 years.

As long as the oldest inhabitant of this little mission town can remember, the swallows have flown away on San Juan day, October 3, and flown back to the eaves of the old church on March 19.

Slightly ahead of "schedule" several hundred of the graceful birds came in from the western sky Wednesday night, nesting in a walnut grove before starting to dispossess a flock of yellow-tailed sparrows from the nests they left last fall.

Observers said that about 1,500 swallows moved from the grove to the mission at dawn.

### Local Man Has Narrow Escape

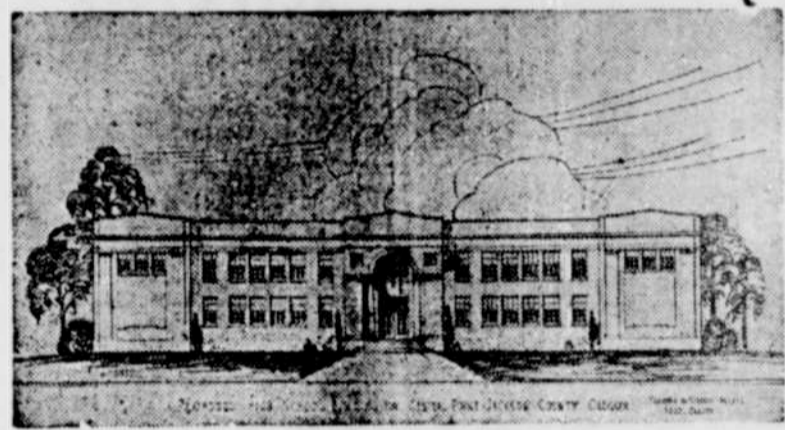
Trevor B. Hare of Central Point missed the two kids on bicycles, but landed in a pretty kettle of fish himself, he told city police. Driving south toward Medford Hare had just reached the turn near where Court street intersects the Pacific highway at the north city limits, when two boys on bicycles rode in front of him. Hare told police.

**MEDFORD VETERINARY HOSPITAL**  
15 years experience in large and small animal practice.  
225 N. Riverside Phone 369  
DR. J. W. WATERS

**SAFETY DEPOSIT BOXES For Rent**  
Former Jackson Co. Bank Vault. Longer Hours. Less Money at  
**Lawrence's Jewelry Store**

Carrying Same High Class Jewelry found in Best Stores in larger cities—and More Moderately Priced.

### Central Point High School



One of the most attractive places in Central Point is the Central Point schools. The grade school and high school are both located on the same plot of ground, occupying two entire blocks, on the highest elevation of any part of town. The grade school was built in 1908 and contains eight school rooms, besides a full basement in which are located a lunch room, manual training shop, bicycle room and toilets. The building is constructed of brick.

The high school building stands southeast of the grade school and is built of concrete in a more modern design. It was built in 1926 and contains eight class rooms, office, library and teacher's room, besides a large auditorium with stage, rest rooms, etc.

Both buildings are heated from a central heating plant built on the side of the grade school building. The grounds about the building are ideal for school purposes being well drained and with sufficient amount of granite sand so there never is any mud. A large lawn with beautiful shrubbery surrounds the high school with a double tennis court in the angle between the two buildings.

Situated on the Southwest corner of the grounds is a large gymnasium building with basketball floor, dressing rooms, toilets, and showers.

Howard P. Jewett, superintendent, has been in charge of the local schools for a number of years, and is recognized as one of the leading educators in the state. Mr. D. F. Amick is superintendent of the grade school. A full corps of high school and grade teachers is employed and a high standard of scholarship is always maintained. In fact, it is recognized that the principal attraction which our city has to attract new comers is the fact that Central Point has a mighty fine school system.

The buildings and grounds of the Central Point schools are under the efficient care of Mr. George Maren, janitor, who takes great pride in keeping the school property in first class condition at all times.

### Shults Bros. Now Maintain Complete Auto Paint Shop

Shults Brothers, auto refinishers, are now located in their own building at 220 North Bartlett street in Medford. There will be found one of the most modern and complete auto re-finishing plants in Oregon.

The new building was recently built by Shults Brothers and is designed to meet the needs of a modern auto-painting shop. Built of concrete, with steel framed windows on three sides and heated by a special furnace. This furnace was designed by the brothers themselves and is worthy of special mention. The furnace itself is in a half basement at one end of the building. The smoke pipe from the furnace over 60 feet long and is laid under the main concrete floor and crosses the entire

building. Thus the floor is always warm, with no dust nor flying ashes to injure the freshly painted cars.

Distributed at various handy places are outlet boxes for attaching the various electrical machines. Painting and enameling is done by means of six large spray guns.

The shop is fully equipped to do all kinds of body and fender repairing. A welding plant is conveniently placed. A wash rack with live steam occupies one corner of the room.

One of the special tools used by Shults Bros. in the repair of fenders or dented bodies is a power hammer which makes 4000 strokes a minute. With this machine dented fenders can be restored to their former appearance without the necessity of cutting the metal, as with the old hand hammer method.

This business was founded by Mitchel Shults seven years ago. On account of his thorough knowledge of the work and his courteous attitude toward his customers, the business soon began to grow and he took his brother Isaac in with him. Now there are four brothers in the concern and all are kept constantly busy.

The firm do re-finishing work for all the automobile dealers in Medford, besides many private customers. Recently a complete stock of auto glass has been installed and the firm is prepared to replace any auto glass at reasonable prices. Both safety and plain glass is carried in stock.

A visit to this modern re-finishing shop will prove of interest to anyone and you may be sure of courteous attention at all times. Just remember the address—220 North Bartlett, Medford.

### Wright Improving Following Smashup

William Wright, aged Central Point district farmer, injured when his wood truck was struck by a northbound passenger train at the Central Point crossing on the morning of March 2, is showing gradual improvement although he is not yet out of danger, the attending physician reports.

Suffering from a badly fractured skull, Wright still has periods of coma, but rallies with increasing strength each time, and the physician stated that he thought the injured man would recover fully.

## CUPP'S

"Complete Home Furnishings"

6th & Bartlett Sts.

Medford

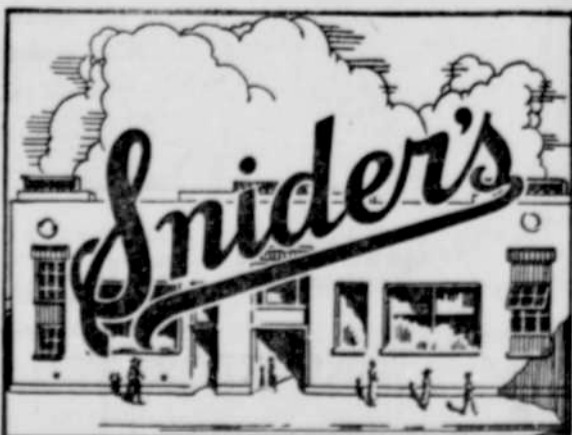
Headquarters for

ARMSTRONG LINOLEUMS, GULLISTAN RUGS, MONTAG RANGES, SIMMONS SPRINGS AND MATTRESSES, SANDEL LAMPS, JACKIE COOPER AND CALIFORNIA BEDSETS, LIVING ROOM, DINING ROOM AND KITCHEN FURNITURE.

Terms in Reason

## Keep Your Dairy Dollars at Home

Get behind Jackson County Dairy Products. Make it "Hands Across the Valley" when you ask for a product produced and manufactured right here in the fertile Rogue River Valley.



Snider's strive to bring you the finest of dairy foods. Don't ask for just Butter, Cheese, or Milk. Ask for SNIDER'S. It's your guaranteed health insurance.

Swinging hard in an effort to miss the two boys, he shot across the highway to the left, narrowly missed a concrete irrigation ditch pylon, took off over the edge of the ditch and landed smack in about a foot of water at the bottom of the canal.

The drop was one of about eight feet, and the impact broke two of the wheels sheer away from the spokes, and scattered mud in a wide arc. Hare was not hurt. A runaway of planks and a truck hitched in front aided in retrieving the seagoing auto after new wheels had been attached. Twelve kids on bicycles watched the rescue proceedings.

**BERT PECK**  
Automobile Repair  
And Service  
FABER BUILDING

**W. G. TRILL**  
ATTORNEY AT LAW  
Office Palm Bldg.  
Phone 1380 Medford

### USED CARS USED TRUCKS

For the Balance of  
**MARCH**

We offer the Best Used Car and Truck

**BARGAINS**

In Medford  
Our Sales of New

**CHEVROLET**

Passenger Cars—Trucks

**100% AHEAD**

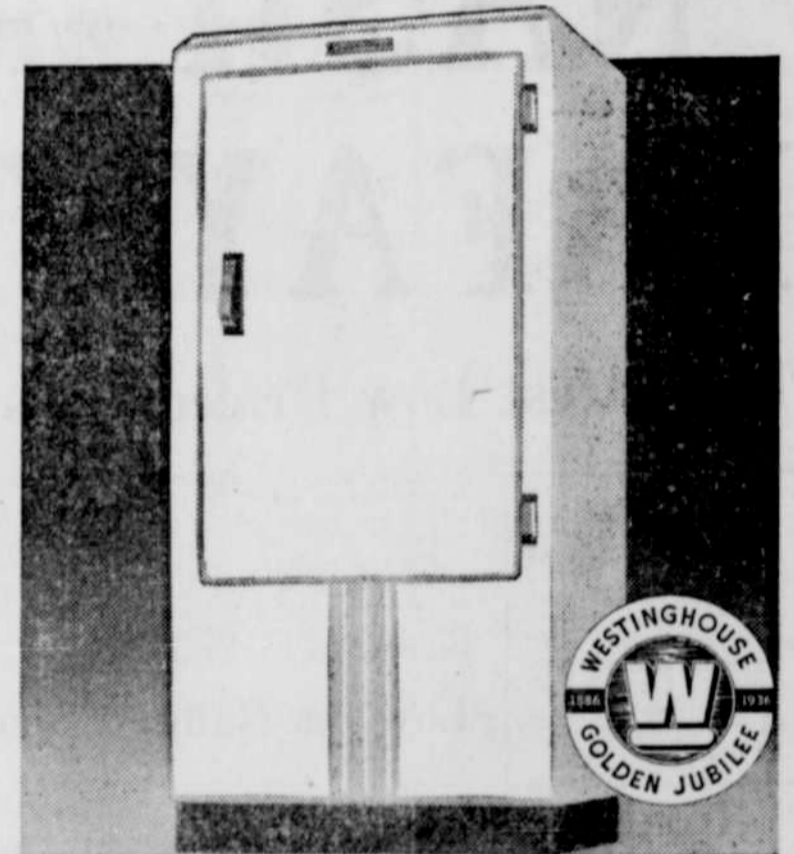
of last year—We must move our present stock of good used cars—

Here is a special for all readers of THE AMERICAN  
Cut out this coupon—it is worth \$5.00 as part down payment on any used car or truck on our used car lot.

**ROGUE RIVER CHEVROLET Inc.**  
25 South Riverside

## Streamline Beauty

for ALL AMERICA



NEW **Westinghouse**  
Golden Jubilee REFRIGERATOR



Check refrigerator values with the Westinghouse Valugraph book.

Smooth flowing lines, streamline beauty—modern styling at its best. That's the new Westinghouse Golden Jubilee Refrigerator. Its perfected Hermetically-sealed Mechanism has been time-tested and performance-proved in thousands of homes. Truly here is an utterly new standard of refrigerator value.

A FIVE-YEAR SERVICE PROTECTION PLAN  
With your Westinghouse Golden Jubilee Refrigerator you get 5 years' protection against any service expense on the Hermetically-sealed Mechanism. The cost of this unusual protection is only \$5.00—included in the purchase price.

**\$118**

PRICES & FROM UP

THE NEW STANDARD OF REFRIGERATOR VALUE

**People's Electric Store**  
212 W. Main Medford