

News of the Week

CORVALLIS—Principal dates for the 1935-36 school year at Oregon State college have just been announced. The dates are uniform this coming year for both the state college and university. Freshman week will be September 23 to 28 inclusive, with classes starting September 30. The fall term will end December 21, and the winter term will start with registration January 2, ending March 18. The spring term starts March 23 and ends June 6. Alumni day will be May 30 and commencement June 1.

WASHINGTON, July 1—Use of work-relief funds to build an express highway, 200 feet wide, across the United States was urged last night by Representative William F. Brunner, Democrat, New York. He said he would put the project before President Roosevelt soon.

Nature's dread manifestations spread death, destruction and terror in many parts of the globe this week. Wind and flood killed 71 in West Japan, stifling heat, tornadoes and thunderstorms ravaged Europe, and the earth shook under Mexico and the Hawaiian Islands, and observers watched fearfully lest Muana Loa the famed Hawaiian volcano, become active.

With Rogue River Valley's geographical advantages in recreations, mining, lumbering and agriculture, this area presents a great opportunity for development, declared Dr. P. A. Parson, head of the state planning board, after a short tour and study of the county Tuesday evening and Wednesday.

An interesting bit of information came to the Ashland Daily Tidings Thursday morning in the announcement that out of the 6214 women listed in "American Women," a volume of outstanding American women, two of the 43 from Oregon were from Ashland: Mrs. Edith B. MacCracken and Mrs. Jessie E. Dodge.

Aimee Semple McPherson, lady evangelist who recently announced that she will never marry again, stopped at the Medford airport Tuesday afternoon on the United Airlines northbound plane which cleared for Portland at 2:25.

The evangelist got out of the plane and walked about the airport during the stop. Officials of the airlines could not say where she was traveling.

SALEM, Ore.—Location of the new capitol building promises to provide a bone of contention for the lawmakers to chew on when the special session is convened to pass judgment on the capitol construction program.

The public works committee of the State Planning board in a "pro-

gress report" filed with Governor Martin says that by all means Salem should be retained as the capital of the state, but qualifies this declaration by adding "if a suitable site can be found" for the new building.

SALEM, Ore.—State Senator James Chincock of Grants Pass is seriously considering becoming a candidate for the republican nomination for attorney general in the primary campaign of 1936, he admitted while on a visit to Salem this week.

SALEM, Ore., July 1—Nine district supervisors under the state department of agriculture were named today by Director of Agriculture Solon T. White.

Ten districts were organized, instead of 11, as originally planned. The Corvallis district was eliminated and taken up between the Salem and Eugene districts.

The men chosen to head the nine divisions were: Medford, Fletcher T. Fish; Coquille, Hans Selfors; Eugene, L. F. Leach; Salem, A. J. Flemming; Hillsboro, A. B. Caples, Hood River, Jim Wilson; Klamath Falls, Ross Aubrey; Milton, Wayne Chastain; Ontario, Hugh Taylor.

Dry Weather Causes Rush for Irrigation

Farmers throughout western Oregon are rushing installation of farm irrigation plants to save crops from severe loss caused by extreme shortage of rain in the past three months, reports Art King, extension soils specialist at Oregon State college. Calls for assistance became so numerous that an additional man was assigned to irrigation duty by the extension service during the emergency.

At most places in Western Oregon less than an inch of effective rain fell during April, May and up to the last week in June. No single rain during that period was more than half an inch, the amount considered necessary to benefit major crops by adding usable moisture to the soil. Some other showers, increasing the total beyond an inch, were so slight in extent as to be of no real benefit King, reports.

Many growers installing emergency systems expect them to pay for themselves in crops saved this year. Many prune and nut crops will be greatly reduced, if not destroyed unless heavy rains come or irrigation water is provided, King believes. County agents are prepared to get assistance for those who still want to establish systems, says King.

DR. R. C. MULHOLLAND
Dentist
Hours: 9 to 5 426 Med. Bldg.
Evening by Appointment
Medford, Ore.
Office Phone 1227-R—Res. 744-Y

The Valley of The Rogue.

V. A. Davis.

Where the skies arch blue,
All the year through,
And the birds sing their sweetest:
There the mountains hold
Like their treasure old,
A valley the completest,—
The beautiful Valley of the Rogue!

The Rogue's crystal stream,
Glides like a dream
By upland, lowland, and lea;
And the stars bright eyes,
Gleam their surprise,
As they nightly joy to see,
The charming Valley of the Rogue!

Where the savage tracked,
And ox-whips cracked,
In the brave old days ago;
Now the school boy plays,
And the iron-horse neighs,
As he gaily speeds along
The stirring Valley of the Rogue!

Here's the stately home,—
The foundation stone
Of our nation, strong, and great;
Here's the Altar Fire
Bidding souls aspire,
To reach the eternal state,
Oh, inspiring Valley of the Rogue!

Oh, sing as you please!
No land o'er the seas,—
Though old in song and story,
Has more of the charm
Of village and farm,
Than this of western glory,—
The smiling Valley of the Rogue!

Old Time never dies,
But lightly flies
This lovely valley over;
The days always seem,
Like Love's young dream,—
Too sweet to live forever,
Oh, dreaming Valley of the Rogue!

In the years to be,
O'er life's rough sea,
Should our ship sail a rover;
We'll return some day,
To rest for aye,
Beside our early lover,—
The beautiful Valley of the Rogue!

Medford School of Beauty Culture

BEAUTY SERVICES
AT A SAVING

Permanent Waves	\$1.00
Finger Wave wet, 25c, dry, 35c	
Shampoo	25c
Hot Oil Shampoo	50c
Haircut	25c
Manicure	25c
Scalp Treatment	50c
Comb Wave	25c
Facials	50c
Eye-brow Arch	25c

419 1/2 EAST MAIN
PHONE 84
Work done by students under supervision

Locksmith - Gunsmith

All Classes Grinding or Sharpening
Electric and Radio Repairs
We Sell Sager & Kelly Axes
All Classes Saws
DAWSON FILING & GRINDING WORKS
44 N. Front Medford

Can Shoot Deer When He Pleases

Gardeners at Cannon Beach reported having trouble keeping elk from devouring their crops evidently are not alone in their troubles, judging from an item in a recent issue of the Pacific Rural Press, prominent California farm paper, which is as follows:

"W. P. Hall, Hat Creek rancher near Redding, has been granted a permit to shoot any kind of deer any time he wishes, if they happen to be on his property. The permit dates from May 15 to December 31 and was granted after Hall complained the animals were feeding on his alfalfa fields, causing an estimated loss of five tons of hay annually."

MRS KELLY ENTERTAINS WITH SHOWER FOR VERA HOOD

Mrs. Roy Kelly entertained Friday at her home with a shower in honor of Miss Vera Hood. The following guests were present, Miss Mildred Nayton, Mrs. Blanche Graw, Mrs. Tul McCay, Mrs. Peggy McCay, of Medford, Mrs. Ethel Thompson and daughters, Ina and Fern of Jacksonville, Mesdames Carl McCay, George

Marine, Doyle Mills, M. D. Hood, Harry Dubbs of Grants Pass, Misses Ada McCay, Wilma Hood, Wanda Hood and the guest of honor, Vera

Hood, who received many lovely and practical gifts. Try Huson's home made ice cream at Huson's Confectionery in Medford.

Vacation Days Are Coming - - -

You need no longer worry about Wash Day when planning a picnic or a vacation. Just call our driver and let him explain how simply and how cheaply you can have your clothes washed the Modern Way.

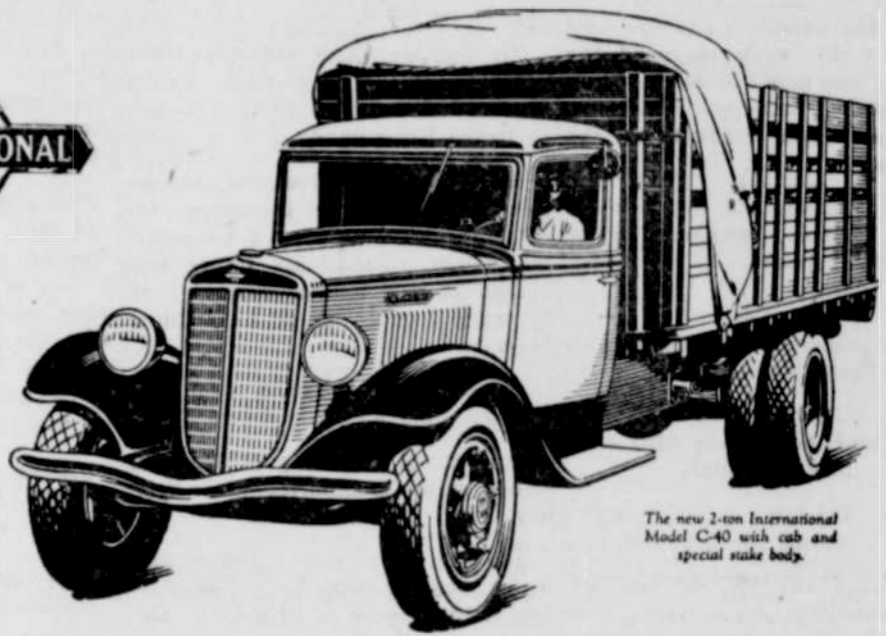
Medford Domestic Laundry

SOUTH RIVERSIDE AVENUE

PHONE 100

DAMP WASH only 52c
FOR 13-LB. BUNDLE

International Trucks Have Long Given Users the Benefit of Quality Features



The new 2-ton International Model C-40 with cab and special stake body.

MAKE any comparison you like as to quality in motor trucks—then you will appreciate the engineering skill and the manufacturing precision inherent in International Trucks.

Many features which are now being spotlighted by others as something new have long been standard with International. Replaceable cylinders; exhaust-valve seat inserts; precision-type, steel-backed, removable-shell bearings; replaceable valve-stem guides; full-pressure lubrication; self-aligning, self-adjusting propeller shaft center

bearing; roller-bearing, anti-friction-type universal joints; and full-floating rear axles are refinements well known to International users.

International can give you all that you expect in a truck, and more, because Internationals are all truck from the ground up.

We offer you the perfected result of thirty years' evolution in International Trucks... latest, most beautiful, most efficient trucks to carry your loads. Sizes range from 1/2-ton to 10-ton. Come in and see these new Internationals. Or phone us for a demonstration.

WALTER W. ABBEY, Inc.

NASH --- GRAHAM --- WILLYS-77 Sales & Service
33 South Riverside Avenue Medford, Oregon

INTERNATIONAL TRUCKS

Free Tube

Plus

10% Discount

with every

GOODRICH SILVERTOWN TIRE PURCHASED



LEWIS SUPER SERVICE STATION

Complete Automotive Service
Wrecker Service
WE NEVER CLOSE
8th & Front — Medford

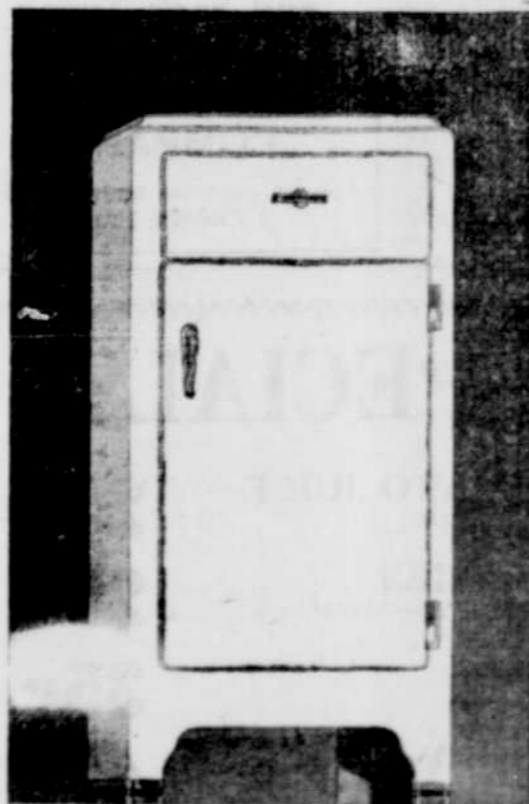


Pure Ice

Not only keeps foods FRESH—but keeps them WHOLESOME!

Call on

Medford Ice & Storage Company

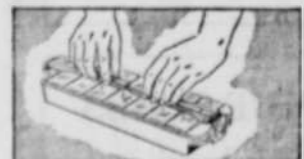


5-YEAR PROTECTION PLAN

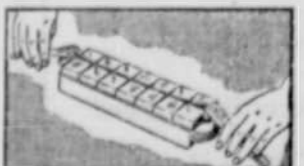
With every Westinghouse Refrigerator you get the standard one-year warranty, plus four years' additional protection against service expense on the sealed-in mechanism. The cost of this protection is only \$5.00—\$1 a year—included in the price!

Presto! Big, zero-cold ice cubes at the touch of a lever!

The tremendously popular Eject-o-Cube Ice Tray is only one of the many new, exclusive features found in the Westinghouse Streamline Refrigerator. Let us demonstrate in person to you such other features as the Revolving Shelf, which makes everything in the food compartment so easy to reach... the Handy Tray on the door... the Triple-Storage Compartment and the 7-Point Dial Temperature Control. 20 Quality models from which to choose. Come in and see them today!



SEE THIS WONDERFUL NEW EJECT-O-CUBE ICE TRAY



REMOVES CUBES INSTANTLY... NO FUSS OR BOTHER AT THE SINK



PRICES FROM \$134 up

PEOPLE'S ELECTRIC STORE

212 WEST MAIN ST.

MEDFORD, OREGON