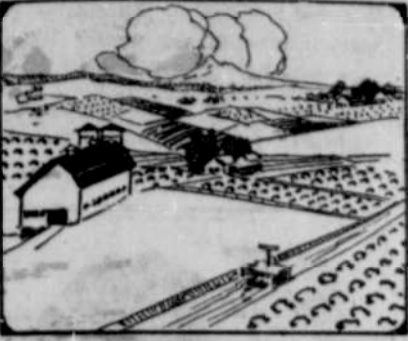


IN THE LAND
WHERE THE
ROGUE RIVER FLOWS



LUMBERING - FRUIT - DAIRYING - MINING - FARMING - STOCK RAISING - FISHING - HUNTING

CENTRAL POINT AMERICAN

On Pacific Highway & S P Railroad

THE CENTRAL
POINT OF BUSY
JACKSON COUNTY



VOLUME 2

CENTRAL POINT, JACKSON, COUNTY, OREGON, FRIDAY, DECEMBER 10, 1926

NUMBER 34

INDUSTRIES OF JACKSON COUNTY

JACKSON CO. PEARS TOP THE
WORLD'S MARKET.

All Towns Are Busy

Raw Materials in Minerals, Timber
and Agriculture Abound in
Territory of Power.

Two industries in Jackson county serve all the other industries—the Southern Pacific company with transportation, and the California-Oregon Power company with electric energy. Pay roll distribution resulting from the operation of these two companies is a most important factor in the prosperity of the cities and towns of Jackson county, and the increasing business of these companies is a very fair gauge of the growth in all other branches of industrial activity.

As you enter the county from the north by highway or railroad there are evidences of considerable agricultural activity in numerous orchards and farms. Attention is soon attracted to the plant of the Beaver Portland Cement company at Gold Hill, now making replacements and additions to its finished grinding department and enlarging its capacity to 2,000 barrels per day. This plant has a large territory and is keeping pace with the growth of the various other industries which depend upon it for a continuing supply of high grade cement for concrete work and building operations.

Then at Central Point men are busy enlarging the brick and tile products plant, to soon employ many men turning out perfect clap products.

Approaching Medford through the extensive orchard land of the Rogue river valley one realizes why the pear has been adopted as the symbol of agricultural activity.

Almost before one's thoughts can be accommodated to a change of scene we are entering Medford and in the midst of the operations of the Owen-Oregon Lumber company, a modern electric drive mill cutting 125,000 feet on one shift, and now operating two shifts per day. It is true that great stands of timber are visible on the distant hills, but the agricultural character of the valley seems at first to discount the possibility of the existence of any other kind of industry. The Medford logging railroad leads off to Jacksonville to the west. The former was built as part of the Hill line activities in southern Oregon a few years ago; the latter not operating at present.

The Tomlin Box factory is an electrically operated plant with a capacity of 62,500 feet of shoo on one shift, and is now operating two shifts per day. It is also served by the Medford logging railroad.

Jackson county has a total land area of about 1,815,000 acres; almost one-half of this area is covered with commercial timber as yet uncut. At the present time there are 25 sawmills of different types and capacities, most of them cutting only a few thousand feet per day.

Traveling still further south one immediately plunges into a maze of packing plants, pre-cooling and cold storage plants, ice manufacturing and car icing plants, and those industries which are more directly connected with the conditioning, packing and handling of the fruit

BARN BURNER GETS TERM

Medford Man Draws 3 Years On
Arson Charge.

When he appeared in circuit court at Jacksonville Monday before Judge Evans of Portland for sentence, having pleaded guilty on a grand jury indictment last week, Edwin (Blackie) Rinninger was sentenced to three years in the state penitentiary for arson. He was accused of setting fire to the W. H. Lewis barn in the Agate district November 8, destroying 30,000 pounds of wool, covered by insurance to the extent of \$10,000, following an alleged agreement with Lewis whereby he was to receive \$100 for the work.

The case of Lewis, who was held insane Saturday by the sanity commission, is pending.

crop each year, which amounts to approximately 2,100 car loads.

Dehydration and canning are now taking an important place as by-products of the fruit and vegetable production.

A large part of what is raised must necessarily find its way to markets in cans. The Rogue River Valley Canning company is a most important link in the chain which reaches from soil to consumer. The Knight Catsup company has a plant which produces a commodity which is fast becoming famous, and which is taking the story of the Rogue river valley to the outside world.

All the big oil companies and many coast-wide and nationally operated institutions have branches in this prosperous section of southern Oregon, for it must not be forgotten that Jackson county leads Oregon, and the entire Northwest west of Minnesota in percentage of increase of farm land values, the average price per acre of land and buildings, according to the U. S. farm census, showing an increase of 29.2 percent in 1925 over 1920.

Continuing on to the California line one passes thru the prosperous city of Ashland with its Southern Pacific railroad shops, its cannery, its iron works, its Springs vbgkqj123456 iron works, its saw mills, box factory and creamery, its Lithia Springs where both gas and water are bottled for shipment to all points of the coast, and its granite quarries which produce exceptionally fine monumental and building stone.

Diversification is a sound principle in business and in finance. In Jackson county the agricultural is diversified so that no one group or product controls the destiny of the farm.

There are specialists of course—and some are better adapted to one line of endeavor than others, but many lines are open to all and are found in successful operation. We refer to dairying, poultry raising, vegetables, stock raising and fruit growing.

The marketing possibilities are diversified and the risks are minimized. The Southern Pacific railroad conveys products north and south to eastern rail and ocean steamer connections. The paved highways are open to motor truck transportation in every direction, and a large portion of local products find their way to the coast counties and to the Klamath country.

A further diversity of industry is in the mineral field, for which Jackson county first attracted attention. Gold mining operations of every character have been conducted and are to be found in various stages of development—some operating, some preparing to re-open with modern methods and in keeping with practices which have made a success of similar operations elsewhere. Almost everywhere you go you will find

HOW IT ORIGINATED

Calling Him a 'Veteran.'

We are all familiar with the word "veteran," used either as a noun or an adjective, for one long experienced in any art or occupation, an especially popular application being to one who has gained much experience in military matters, in the art of war. Macaulay, in his characteristic eloquence and delicate flattery of veteran diplomatists and courtiers." What a far cry from a yearling calf. Yet that is how it started, the word "veteran" having the same source as "wether" which is a certain kind of ram, originally a yearling calf.

"Veteran" is derived from the Latin "vetus" meaning old, close kin to the Sanscrit "catsana," and the Greek "eros," meaning "year" precisely the same sources from which we have "wether," originally a yearling lamb. If a veteran is a "yearling" we should say it is a figurative "year," one of many more weeks than comprises the calendar year, that earned him that title.

Autos Collide on Main Street.

The intersection of east Main and the Pacific highway was the scene of a slight wreck Saturday morning when two touring cars came together with more or less violence.

As Mrs. Frank Gregory was entering town from the east in her car, J. J. Skinner, driving Copeo car No. R-30, turned the corner onto Main the two cars colliding "cornerwise." The Copeo car suffered a smashed fender and sprung steering tie rod, while the Gregory car sustained a sprung rightfront axle.

State Traffic Officer Chas. Talent was called, who declared the Copeo driver at fault. Mrs. Gregory having had the right-of-way.

some evidence of mining activity in copper, coal, gold, granite, oil shale and in other products from underground. There are some who predict that mining will be Jackson county's big industry when history's final chapters are written. At the present time it appears to be passing through that transition period when small high grade operations must give way to the large volume, lower grades, intensive mining operations.

The raw material situation in every branch of industry—minerals, timber and agriculture—is excellent. Capital is abundant and new groups representing outside financial circles are making big investments here. Labor supply is satisfactory, although at times there is shortage of certain classes of labor due to the work. The general living conditions, however, in the Rogue river valley are so agreeable, and it is such an attractive place in which to live, that labor contentment probably registers its highest standard on the farms and in the cities and towns of Jackson county. In the final analysis, industry to be successful must be based on labor contentment, and anything in the way of climate or living conditions which makes for contented labor, reduces labor turnover, and thus cuts out one of industry's greatest losses.

The tourist traffic and all that must contribute to this growing feature of American life, has assumed the proportions of an outstanding industry in Jackson county. From the annual tourist crop, a certain percentage remains (or returns) as investors or as workers in the various industries of the Rogue river valley, or as settlers. In this county irrigation is on a much more substantial footing than is reported from projects in other sections of the country. —Oregon Business.

OREGON STATE TEACHERS' CERTIFICATES

Examinations for state certificates will be held at Jacksonville, Oregon, commencing at 9 o'clock Wednesday, Dec. 15, and continuing until Saturday at 4 o'clock p. m. on of the same week.

Applicants must present themselves for the examinations they wish to take at the time set for the question envelopes to be opened, as the examinations cannot be offered at any other time or place. The rules and regulations regarding the examinations will be read at 9 o'clock on the morning of the first day. Those entering later in the week and wishing to take only a few of the examinations should present themselves at the secretary's desk for registration and for information regarding the rules. The eleven subjects required for a one year elementary certificate are put in black letters upon the program.

Wednesday program. 9 a. m.—U. S. History, music, drawing. 11 a. m.—writing. 1 p. m. Physiology, manual training, composition, methods in reading. 2:30 p. m.—Reading, course of study for drawing, methods in arithmetic, domestic science.

Thursday program. 9 a. m.—Arithmetic, history of education, psychology, methods in geography, mechanical drawing, domestic art, course of study in domestic art. 1 p. m.—Grammar, stenography, American literature, physics, methods in language. 2:30 p. m.—Geography, typewriting, thesis for primary certificates.

Friday program. 9 a. m.—Theory and Practice, physical geography, English literature, chemistry. 11 a. m.—Spelling. 1 p. m.—School Law, geology, algebra. 2:30 p. m.—Civil government.

Saturday program. 9 a. m.—Geometry, botany, 1 p. m.—general history bookkeeping.

SURPRISE PRE-WED SHOWER

Relief Corps Hold Shower for Local
Bride to Be Married Soon.

Wednesday night was a big social night for the Relief Corps, the Rebekahs and the Security Benefit association and their friends in their cooperative shower and entertainment given in honor of Miss Christena Richardson, a member of these orders, whose wedding is announced for next Sunday. Over one hundred valuable wedding gifts were showered on Miss Christena, each accompanied by love, friendship and well wishes. The entertainment feature of the evening party was a mock-wedding, a forecast of ten years hence and the golden wedding, after which, as soon as the merriment permitted a big supper was served. Miss Christena Richardson, daughter of Mr. and Mrs. Jesse Richardson of Central Point, is to be married on Sunday, December 12, at the home of her parents, to Dr. C. Ward Davis, of Salem, Or. After a brief wedding trip they will be at home in the state capitol city where the doctor has a good dental practice.

Miss Richardson is a C. P. H. S. graduate and the best wishes are extended by her former school friends as well as the entire community of acquaintances. At the wedding Sunday Rev. Belnap will officiate.

Boy Held on Mann Act.

Eureka, Dec. 3. (AP.)—Warne Stephens, 22, of Arcata, was held in the county jail today in default of \$1000 bonds on a charge of violating the Mann act. With him when arrested was Mrs. May Smith, 19, of Medford, Ore., who admitted she is the mother of two children and has for several months been living with Stephens as his wife.

THE CAUSE IS A WORTHY ONE

"EVERY SEAL IS A BULLET" IS
WHAT THEY SAY

Lots For a Penny

White Plague Is Most Dreaded and
Dreadful Disease Known
to Humanity.

A Red Cross Christmas seal costs only a penny, but it represents a cause that is big with importance and which deserves the hearty support of the general public. When you buy

Red Cross seal and affix it to letters or parcel, you really do two noble and worthy things. First you contribute your mite to encourage and help along the nation-wide campaign for the prevention and eradication of tuberculosis—the so-called great white plague, which is the most to civilized man, measured by the number of victims it annually calls from the ranks of humanity; and, second, you send to everyone who sees a Red Cross seal a reminder of the splendid and winning fight that is being waged to master this insidious enemy of mankind, and a further reminder that it is only a matter of persistence an education to drive this disease into a corner, figuratively speaking, and rob it of its real terrors.

Every contribution to this cause is a splendid, practical way to help win a big fight for everybody, including of course yourself. For even though you may have no present fear of this skulking, treacherous, disease, it lurks everywhere, waiting for additional victims, and you or some of your friends may be next on the list. The money raised through the sale of Christmas seals provides the ammunition to fight this menace, and every person should help it along, according to his means. "Every seal is a bullet" is the suggestive way the anti-tuberculosis workers put it, and it is up to you to provide as many bullets as you can. If it is only a single bullet, be sure and do your part, and if you can furnish a whole broadside, so much the better.

MEDFORD COURT TO OPEN

Federal Officers From Portland
to Conduct Session.

Federal Judge Bean; H. S. Kenyon, deputy clerk of the federal court; Clarence R. Hotchkiss, United States marshal; Harry V. Reed and Cal C. Wells, deputy marshals and Millar E. McGilchrist and J. N. Helgeson, deputy United States district attorneys, arrived in Medford Monday where the annual term of the federal court for southern Oregon opened that morning. George Neuner United States district attorney, expects to go south later in the week.

The Medford term is expected to take the most of two weeks, no cases being set here until December 20. Included among civil matters to be heard are the suits brought by Klamath Indians against the government to force allocation of valuable timber lands to members of the tribe.

Mr. and Mrs. W. Martineau, of Gold Hill, called Tuesday.