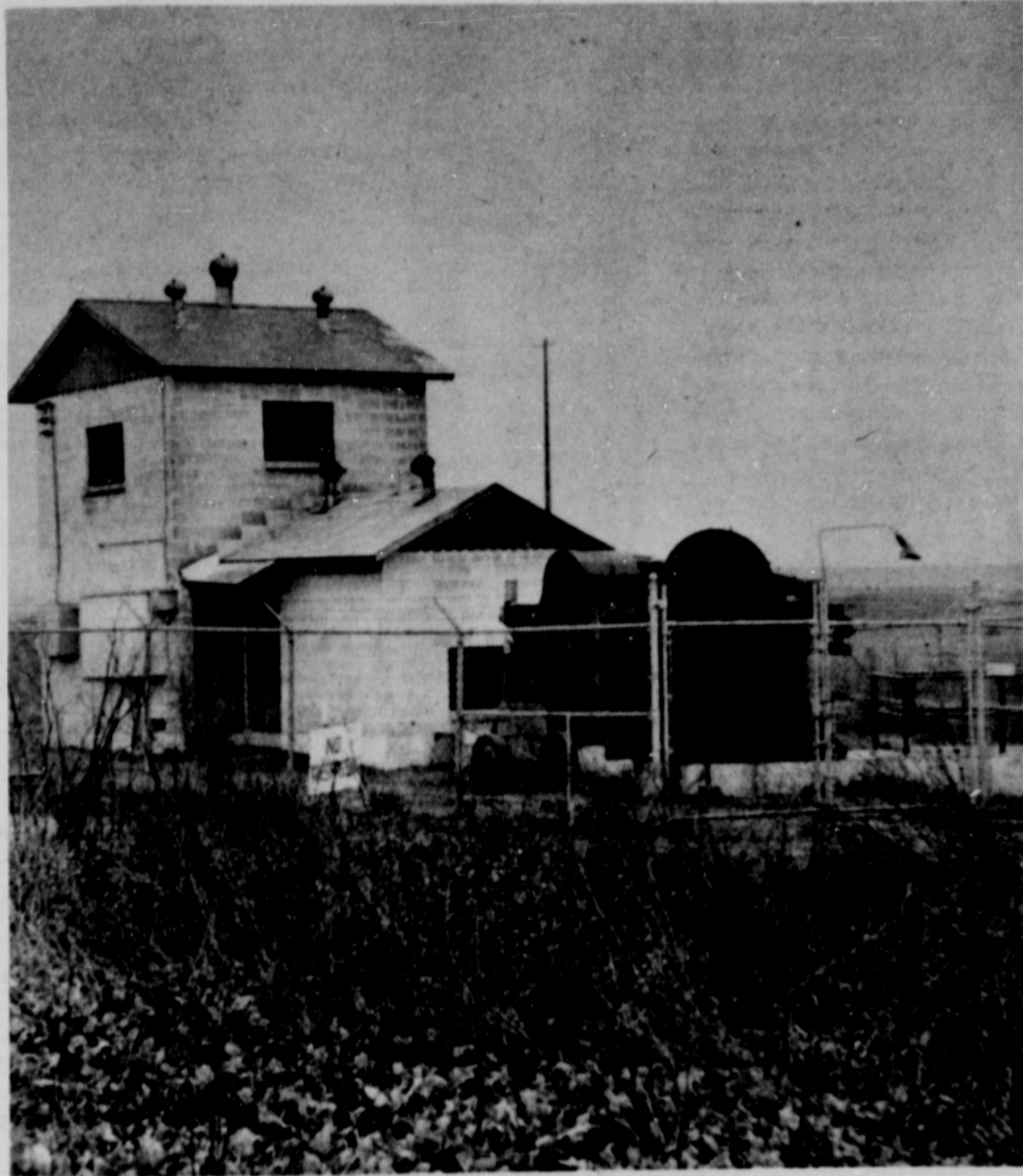


SEWAGE PROBLEM CRITICAL

By Bob Vroman



SEWAGE PUMP-- It costs Central Point residents about \$200 per month in electricity to force sewage to the Medford disposal plant on Rogue river... plus another \$4,000 a year for the privilege of doing so. The pumping system is said to be 'antiquated' and expensive breakdown have occurred from time to time. The pump is located east of Central Point near Bear creek.

Central Point, along with other valley communities, is in trouble... according to those persons who understand the current and future sewage needs.

Central Point's inadequate pumping system, combined with Medford's over-taxed disposal plant has state sanitary officials threatening to "freeze" municipal expansion... until some changes are made.

Any way you look at it, it is going to cost the tax payer in the end. The Question is, which way to 'jump.'

Officials agree that there are only three alternatives for the people of Central Point. The city can build its own sewage plant and be totally independent; it can continue to lease from Medford, or it can join the Bear Creek Valley Sanitary authority.

Central Point has its own peculiar problem in that storm runoff from the streets goes into the sewer system. Which means that the city is paying the city of Medford, by the gallon, to dispose of rain water.

Although the city of Central Point has an option on 50 acres of property north of town suitable for a lagoon-type disposal system, no action is being taken until the Bear Creek Valley authority comes up with more definite figures as to what their program is going to cost.

The \$9 1/2 million Bear Creek Valley project could get as much as 75 per cent of the cost of the system paid for by federal and state grants. It would be an adequate system, projecting 50 to 100 years into the future. An accurate cost study will be started soon by the authority, to give a more detailed picture of what it will cost the various municipalities to participate in this "master plan."

(more next week)

Joint Account



WINNER, AAA TRAFFIC SAFETY POSTER CONTEST

Crossing streets at corners is the proper place in most instances but even crossing at corners is not without danger, reminds the California State Automobile Association. Two out of five pedestrians killed or injured in traffic accidents last year were struck while crossing at a corner.

The pedestrian should always exercise care and caution when crossing streets and should WATCH FOR TURNING CARS, says the CSAA. Before you leave the curb, make sure that oncoming drivers see you and are preparing to stop.

A safety poster with this theme is being distributed to schools throughout northern and central California and Nevada as part of the monthly pedestrian safety program of the CSAA.

Worth Repeating

The complete life, the perfect pattern, includes old age as well as youth and maturity. The beauty of the morning and the radiance of noon are good, but it would be a very silly person who drew the curtains and turned on the light in order to shut out the tranquility of the evening.

W. SOMERSET MAUGHAM

Obliged Prince

Annie Oakley, famous U.S. markswoman, once obliged Crown Prince Wilhelm, who later became Kaiser Wilhelm II, by shooting a cigarette out of his mouth at 30 paces, while Buffalo Bill's wild west show played in Berlin.

Removing paint from carved woodwork is easier if you use an old toothbrush in conjunction with paint remover.



SENSATIONAL VALUE

NORGE WASHER

Fully Automatic
MOD 1010

- 3-Temp water selection
- Fully automatic wash, rinse and spin action
- 5 fresh water rinses for cleaner washes
- Off-balance load reset button

\$169.95

with trade

PAULSEN - GATES

Appliances

FREE 1 YR. SERVICE

FREE DELIVERY

136 E. Pine 664-1259