

ON THE UPPER ROGUE.

Bargains in Fruit, Farm and Timber Lands.

Below will be found some real bargains in timber and fruit lands which are worthy of your attention.

238 acres—On Rogue river, 30 miles from Central Point. Good two-story frame house, good barn and other buildings, good well of excellent water, family orchard of apples and all kinds of berries. About 100 acres of fine alfalfa land. Valuable water right on Rogue river with ditch constructed to place. Tri-weekly mail service passes door. Excellent hunting and fishing. Price \$20 per acre.

160 acres—3 1/2 miles from Prospect, on Crater Lake Park wagon road and within 1 mile of Ray ditch and power site. Good two-story frame house and other buildings. Good fences. Some fruit on place. Good well of water, 40 acres in timothy. 1,500,000 feet of pine and fir timber. Good outside range. Price \$1800. A snap.

100 acres—Same neighborhood. Good house and barn, good fruit and berries on place. 2,000,000 feet pine and fir timber. Price \$1800.

160 acres—Good fruit farm All good alfalfa land and watered by living springs. 25 acres in cultivation. Good house and barn. Near post office and good school 3,000,000 feet fine red fir timber. 30 miles from Central Point, on Fort Klamath road. A most desirable home. Price \$3,500.

For further information, inquire at the HERALD office, Central Point, Ore.

How Diphtheria is Contracted.

One often hears the expression, "My child caught a severe cold which developed into diphtheria," when the truth was that the cold had simply left the little one particularly susceptible to the wandering diphtheria germ. When Chamberlain's Cough Remedy is given it quickly cures the cold and lessens the danger of diphtheria or any other germ disease being contracted. For sale by Mary A. Mee.

Toothblacks.

"As we have toothblacks so they've got toothblacks in the Sunda Islands," said a traveling man.

"What is a toothblack?" "Don't you know? A toothblack is an old woman with a pot of black paint, a gold leaf book and a set of vegetable brushes. From hut to hut she passes, and for a small fee—a yam, a bunch of bananas, three coconuts—she paints the Sunda Islander's teeth a glistening black—all but the two front teeth. These she glids. And the Sunda Islander thereafter goes about with a self-conscious smile revealing a truly knock-me-down dental display, a black and gold symphony. It is a common trick among the semicivilized to color the teeth. In Macassar dark brown is the popular hue, and in Japan among the unenlightened classes the teeth of wives are always painted black. In such countries the toothblack is an institution. She goes from house to house as full of gossip as a barber."—New Orleans Times-Democrat.

His Profession.

In the midst of our tea drinking in the little Parisian restaurant, says Miss Betham-Edwards in an account of "Home Life in France," a gentlemanly individual wearing a tall hat and frock coat entered and, after a short colloquy with the young master, passed out.

"You would never guess that gentleman's errand," Marcel said, smiling, as he seated himself at the tea table. "He looked to me like a rather distinguished customer," I replied. "Some government functionary on half pay or an owner of bonds."

Marcel smiled again. "That well dressed gentleman, then, supplies us with toothpicks, which his wife makes at home. He calls once a month and takes our orders. I dare say he and his wife between them make from \$6 to \$8 a week and contrive to keep up appearances on that sum. It is an instance of what one calls 'gilded poverty.'"

How a Flea Jumps.

It is said that a flea leaps 200 times its height, and, while it usually does land on its feet, it often falls, especially when it falls on a perfectly smooth surface where the claws can get only a slight hold. A flea has six legs, whose great length and bulk make them so heavy that they must be a great help in keeping their own right side up when it makes one of these gigantic jumps, and when it lands upside down or in some other way its ability to kick is so great that not more than one wriggle is needed to set things right. A flea's wings are mere scales and of no use; but, small and worthless as they are, they tell the entomologist something about the proper classification of the insect. To the flea itself they have no value.

Not Depressed.

"He says his whole life is a fizzle." "Is he so pessimistic?" "Not a bit of it. He's merely the clerk that attends to the soda water drinks."—Baltimore American.

It is for want of application rather than means that men fail of success.—La Rochefoucauld.

Subscribe for the HERALD.

Our Big Clubbing Offer.

Arrangements have just been completed whereby the Central Point Herald is enabled to make one of the greatest clubbing offers ever made by an Oregon newspaper. Here it is: Central Point Herald, per year, \$1.50. Oregon Journal (semi-weekly), \$1.50. Pacific Monthly, \$1.00.

Total \$4.00. Our price for all three, only \$2.50

The Semi-weekly Journal is the leading semi-weekly newspaper of the state. It gives all the general and state news and in addition gives the complete and correct market reports twice each week. In the Friday issue a page of "Funny Pictures" for the children, a page of short stories, and other features make it a welcome visitor in every home.

The Pacific Monthly, published at Portland, is the leading magazine of the West. It is ably edited and beautifully illustrated. Its stories are clean, wholesome and interesting, all with more or less of a flavor of the West. Special articles on irrigation, stock-raising and similar industries are at once entertaining and instructive.

The Central Point Herald is a strictly local newspaper. The HERALD does its best to set forth the advantages of the Rogue River Valley, particularly that portion immediately adjacent and tributary to its town. It labors for the advancement and upbuilding of Central Point and vicinity and is entitled to the support of every citizen of this section of the Valley.

Take advantage of this great offer at once. It will only stand for a limited time. Three Publications that you need for the price of two. You save \$1.50 and that's "worth while."

About Digestion.

It is not the quantity of food taken but the amount digested and assimilated that gives strength and vitality to the system. Chamberlain's Stomach and Liver Tablets invigorate the stomach and liver and enable them to perform their functions. The result is a relish for your food, increased strength and weight, greater endurance and a clear head. Price, 25 cents. Samples free. For sale by Mary A. Mee.

Methodist Church Services.

Sunday School, every Sunday morning at 10:00. Prayer meeting, every Thursday evening at 7:30. Preaching services, every other Sunday at 11:00 a. m. and 7:30 p. m. Young People's meeting, 8:30 p. m. each Sunday evening that preaching services are held in the church.

When to Go Home.

From the Bluffton, Ind., Banner: "When tired out, go home. When you want consolation, go home. When you want fun, go home. When you want to show others that you have reformed, go home and let your family get acquainted with the fact. When you want to show yourself at your best go home and do the act there. When you feel like being extra liberal go home and practice on your wife and children first. When you want to shine with extra brilliancy go home and light up the whole household." To which we would add, when you have a bad cold go home and take Chamberlain's Cough Remedy and a quick cure is certain. For sale by Mary A. Mee.

Livestock Insurance.

The National Livestock Insurance Association of Portland, Oregon, insuring livestock against death from any cause. Our rates are right. Investigate us. We make no promises we cannot fulfill. For further particulars, inquire of G. L. Neale, agent, Central Point Oregon. 20tf

ESTRAY NOTICE.

I have in my pasture, taken up about August 24, 1907, one two-year-old light red bull, showing underbit and swallow-fork on the left ear. The owner should come forward, pay charges and take animal away or it will be advertised and sold according to law.

A. CALEY.

Call on Edmund March at the Cooksey farm, Central Point, Oregon. 33d37



FRIEND TO FRIEND.

The personal recommendations of people who have been cured of coughs and colds by Chamberlain's Cough Remedy have done more than all else to make it a staple article of trade and commerce over a large part of the civilized world.

Sold by Mary A. Mee.

Central Point School Report.

Report of Central Point Public School for the month ending Dec. 6, 1907:

Number of days taught, 18; days attendance, 3780; days absent, 152, times tardy, 34; number enrolled on register, 235; average daily attendance, 210; per cent of attendance, 93; number of visitors, 25.

The High School and the sixth grade had but one case each of tardiness.

ROLL OF HONOR.

The following pupils were neither tardy nor absent during the month:

HIGH SCHOOL.

Marguriet Holmes Paul Norcross
Katie Van Vliet Hull Norcross
Volney Hensley Edward Kahler
Daisy Wiseman Frank Hatfield
Mary Olsson Linn Hensley
Carrie Morehouse Ward Loeber
Blanche Van Vliet Thomas Kincaid
Edith Caley Mabel Peart

EIGHTH GRADE.

Victoria Van Vliet Fred Farra
Nettie Lewis Ward Barnett
Elizabeth Stark George Parker
Claude Clark.

SEVENTH GRADE.

Teacle Neale Audrey Holmes
Louise Ellestad Earl Obenchain
Martin Witte Merritt Merriman
Henry Freeman Willie Leathers

SIXTH GRADE.

Grace Smith Sarah Bebb
Cassie Jones Edith Emerson
Ella Hay Mary Hanley
Clifford Hatfield William Price
Lawrence Brown Mark Heatherly
Russell Thompson Orm Welch
Brice Nichols Earl Moore
Raymond Aikins.

FIFTH GRADE.

Sadie Beebe Winnie Fifield
Mary Grogan Ella Witte
Mabel Grogan Opal Coram
Glady's Grazier Mabel Jones
May Ashen Anna Rawhouser
Fay DeFord Grace Leathers
Gertrude Stephenson Cora Cliff
Nathan Grisham Earl McFall
John King Eddie Griffith
Roy Bebb Clarence McFall
Guy Nutt Thomas Altimus
Bennie Stephenson Leonard Freeman

FOURTH GRADE.

Guy Owen Merritt Owen
Merritt Bennett Lowell Grim
Byron DeFord Elmer Kyle
Roy Nutt Julia Grogan
Edith Maddux Phyllis Grazier
Opal Heatherly Fern Beebe
Katie McJimsey Jessie Ashen
Theresa Ellestad Grace Ashen
Clara Hathaway.

THIRD GRADE.

Edith Jacobs Genevieve Cook
Cleora Childs Clara Grim
Lizzie Ferguson Hazel Wright
Rose Neal Lela Peart
Lydia DeFord Florence Kline
Lola Freeman Roy Reddcliffe
John Ellestad Newton Estes
Ted Jones Clifford Gardiner
John Rawhouser Edward Aikins
Floyd Kyle Everett Sears
Lawrence Green.

SECOND GRADE.

Joseph Ferguson Charles Fuhrer
Carroll George David Hicken
Frederick Hopkins Vernon Pankey
Mikey Hanley Mary Bebb
Hulda Ellestad Vella Nutt
Goldie Owen Josephine Scott
Gladys Stephenson Helen Warner.

FIRST GRADE.

Caroline Alexander Bernice Nichols
Donald Nash Lee Leathers.

A Home Made Happy by Chamberlain's Cough Remedy.

About two months ago our baby girl had measles which settled on her lungs and at last resulted in a severe attack of bronchitis. We had two doctors but no relief was obtained. Everybody thought she would die. I went to eight different stores to find a certain remedy which had been recommended to me and failed to get it, when one of the storekeepers insisted that I try Chamberlain's Cough Remedy. I did so and our baby is alive and well today.—Geo. W. SPENCE, Holly Springs, N. C. For sale by Mary A. Mee.

Trespass Notices, printed on cloth, for sale at the HERALD office. 50 cents a dozen. tf

PINEULES

30 DAYS' TREATMENT FOR \$1.00

Satisfaction guaranteed or money refunded.

FOR ALL KIDNEY BLADDER TROUBLE, RHEUMATISM AND LUMBAGO

A dose at bed time usually relieves the most severe case before morning.

BACK-ACHE

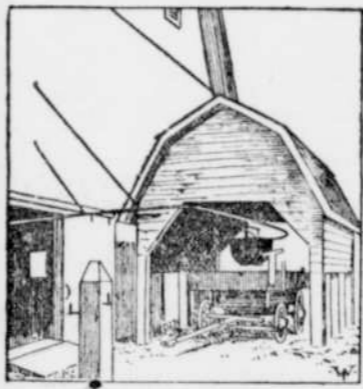
PINEULE MEDICINE CO. CHICAGO, U. S. A. Sold by Mary A. Mee.

Dairy and Creamery

A rented farm where both owner and tenant are receiving adequate compensation for their investment and services and where ample returns are made to the soil to insure larger and better yields with each succeeding year should attract more than passing notice. Such conditions exist on a farm located in southern Michigan. It is a dairy farm of 120 acres, 100 acres tillable, two and a half acres in natural pastures and the remainder taken up by lanes, roads, yards and buildings.

Sawdust is used for bedding in the stalls and as an absorbent. This renders the manure especially adaptable for disking in, as in the case of fitting out stubble for alfalfa. No ill effects on the soil have ever been noticed from the use of this material.

A litter carrier, suspended from an overhead track, carries the manure



MANURE SHED AND SPREADER.

from the stable and dumps it on a manure spreader. The spreader stands on a rectangular cement foundation built with sides about two feet above the floor. The ends of the floor are raised, so that any drippings from the spreader cannot escape, but not high enough to prevent driving the spreader on or off. By keeping some absorbent litter, which is changed when necessary, on this foundation all the liquid as well as the solid manure is saved without recourse to a manure cistern. A roof over this foundation, supported by seven foot posts, keeps off rain and snow. The manure is hauled to the fields daily. Experience has shown that it injures the texture of the soil very much to drive a loaded wagon over it when it is too wet. To avoid this trouble, the building in the rear future of a shed large enough to store the manure accumulating during the wet periods of the year is contemplated. Enough manure is produced by the herd to cover the whole farm with six to eight tons to the acre each year.

Machinery Equipment.

The implements and machinery in use on this farm are three wagons, two disk harrows, one smoothing harrow, two walking plows, one gang disk plow, two two-horse cultivators, one corn binder, one mowing machine, one two-row cultivator, one manure spreader, one weeder, one combined fertilizer and grain drill, one fifteen horsepower gasoline engine and one silage cutter. One of the best tools is a float made of three eight-foot poles weighted so as to make a good load for three heavy horses.

Work and Wages.

Five men are employed the year round. Four of them milk from ten to fifteen cows each. Two of the milkers drive the delivery wagons on the city milk route and take care of the cans and milking utensils. One attends to feeding the stock and to the chores about the barns. The fourth while not milking is engaged at labor in the fields. One man devotes his entire time to general work in the fields. A few day hands are hired during busy times, such as the haying and silo filling seasons.

The milking takes about two hours twice a day. It is the first work done in the morning, commencing at 4:30, and is finished in the evening at 6 o'clock. It takes the two men who drive the milk wagons about five hours to deliver the milk and one hour to take care of the wagons and cans. The farm men work about nine hours in the field.

The two men who drive the milk wagons receive \$25 a month. The barn man gets \$6 a week. One farm hand is paid \$23 a month; the other, a boy, \$18 a month. The wages paid the temporary help vary from 50 cents a day for boys to \$2.50 a day for skilled men. All the laborers are furnished board.

Causes of "Hard Milking."

"Hard milking" occurs from varied causes. Sometimes the trouble is due to an unnatural construction of the entire length of the canal of the teat, sometimes to new growths along its course and not infrequently to little shotlike bodies attached to a pedicle, which drop down into the canal from above and form a sort of ball valve obstruction. Again the trouble may come from injuries to the lower part of the sphincter of the teat. These last causes usually arise from injuries received from without and occasionally are due to warty growths at the opening of the teat.

Attractive Butter Prints.

Butter, if put up in prints, should be wrapped in parchment paper to preserve it. Prints should be rectangular and have a neat, trim appearance. Whatever may be the condition, the man that puts his butter up in the handsomest packages will sell the most butter if other conditions are equal.

If You Love Her

Don't be afraid to tell her so. She will not hurt you. Brace up, be a brick and

"Pop the Question"

Don't make any mistake in the question; ask her sweetly and gently: "Dearest, will you join me in eating some of that delicious Candy at Sam Moore's Confectionery?"

and She'll say "Yes."

G. S. MOORE,

2nd AND PINE STS., CENTRAL POINT

WE WANT

Everybody in Central Point and neighborhood to come in next Sunday and eat the best

25 CENT CHICKEN DINNER

they ever tasted. We give our patrons the best the market affords. Commercial and Transient Trade a Specialty.

Central Point Hotel, L. F. Reddcliffe Proprietor.

BLACKSMITH COAL FOR SALE

I have a Car-load, If you need any, let me know.

PRICE, THE HORSESHOER

WHEN IN TOWN CALL AT

THE :: OFFICE

For Pure "Astor" Whisky

Which is "the best" in Oregon. Try it and if you don't say it is "the best" Jack will treat. We also handle the Celebrated

Columbia Beer

The Office

Medford, Oregon

Jeffers & Peart

General Blacksmiths and Woodworkers ..

HORSESHOING A SPECIALTY

We treat you and your horses right. All kinds of repair work done. Satisfaction guaranteed.

EUROPEAN PLAN FINE SAMPLE ROOM

Hotel Nash

The Home of Commercial and Mining Men

Hotel Nash Co., Proprietors

Medford, Oregon Dining-room Unsurpassed. Refurnished Throughout.

Central Point Livery, Feed and Sale Stables

W. C. GREEN, Proprietor

Up-to-date rigs and gentle teams guaranteed. Will take you from any train or any hotel, at any hour of the day or night, to any place you wish to go. Best of care to transient teams. FEW GOOD GENTLE TEAMS FOR SALE.

Medford National Bank advertisement with details of capital, surplus, and services.