

The Observer.

MORO, OREGON.

Official Paper for Sherman County.

FRIDAY July 26, 1918

Entered as second class matter at the post office at Moro, Oregon, July 25, 1891.

C. L. IRELAND, Manager.



"My Country 'Tis of Thee, Sweet Land of Liberty."

We will not be responsible for the neglect of subscribers to notify as of changes in their address. Nor will the notification of a Postmaster that the subscriber has "Removed" settle the bill of a delinquent.

Butter Nut Bread, fresh daily, at Moro Trading Co.

Try Carnation Steel Cut Coffee—every can guaranteed—30c per pound. For sale by Moro Trading Co.

Sherman county has now an active detail of Oregon Military Police within its border to help the farmers protect their crops and preserve order as may be necessary. Altho headquarters for the troop is at Moro, it will do patrol duty in all parts of the county and no district will be favored more than any other. Horses and equipment has been donated to the troop by local farmers and courtesies generally tendered the men when in various parts of the county, such as meals and lodging at farm houses where night and meal time catch them will be appreciated by the men as they must pay own expenses from a not too liberal salary. All men in the troop are subject to military draft as called by their board and the salary paid is not as large as they could earn at other work. Their service is a patriotic proposition and will be better appreciated as this fact becomes more widely known.

H. H. Belshee is building an 8000 bushel grain bin on his farm in the Hay Canyon section. When completed it will be a two story affair with divisions for storage of various grades of wheat.

Wheat Prices for 1918 Marketing Direct Possible

Explanation of the plan for wheat and flour control, 1918 crop, is given in a pamphlet just issued by the cereal division of the United States food administration.

Among important points made clear are that the producer can ship direct to the Food Administration Grain Corporation, and that the charge to be deducted as remittance is made for wheat delivered at a primary market is to be 1 per cent. Country elevators and buyers are entitled to margins about such as have been established by custom.

For all Pacific Coast points the established "fair price" is fixed at \$2.20 on basic wheats. These include No. 1 Northern, No. 1 hard Winter, No. 1 red Winter, No. 1 Durum and No. 1 hard white. The points at which this price prevails are Tacoma, Seattle, Portland and Astoria.

Certain wheats are to bring 2 cents premiums over the basic prices, while others sell at discounts. The premium varieties are No. 1 dark hard Winter, No. 1 dark Northern Spring and No. 1 amber Durum. No. 1 soft white and No. 1 yellow hard wheats sell at discounts of 2 cents per bushel. White Club goes at a discount of 4 cents and red Spring at 5 cents below the "fair" price.

Discounts for No. 2 grades are to be 3 cents and for No. 3 grades 7 cents below the No. 1 price.

At all principal primary markets there is an open market where all classes of buyers are well represented, and the producer and the consumer will be amply protected through the competitive activities of the several interests, the Food Administration Grain Corporation being prepared to buy and protect the "fair price" basis.

As the miller is restricted to a "fair price" basis for his flour, he cannot pay more for wheat than the expense of milling and a reasonable profit will allow.

The farmer can protect himself by the study of the primary prices, deducting intermediate charges, or he can ship to the Food Administration Grain Corporation, or he may ship to a commission merchant at a terminal market and through him secure the benefit of competitive buying.

There is nothing in the "1918 plan" which prevents a buyer at point of origin from placing his own grade upon the wheat which he purchases. If, by the buyer's act, the grade is raised, it is equivalent to an increase in the price. If the buyer lowers the grade, the producer or dealer's protection is to ship to the Food Administration Grain Corporation.

Producers or dealers have the right to bill cars of wheat direct to the Food Administration Grain Corporation at any of the principal primary markets. When the wheat is unloaded in the elevator, and weight and grade returns are made to the Food Administration Grain Corporation, remittance will be made on the basis of weights and grades so reported, and on the basis of the government

price less 1 per cent, administration charge for the service.

It is the policy of the Food Administration and of its agents and representatives to work in entire harmony with the Department of Agriculture in maintaining the integrity of grades as named and defined by them under the grain standards act, in order that the producer, the consumer and all interests handling grain may be properly protected.

The producer or dealer should always keep in mind that, if he is not satisfied with the prices paid by individual buyers, or with the grading of wheat, his protection lies in his being able to ship to the Food Administration Grain Corporation at the various markets named above.

The grade discounts for No. 2 and No. 3 are made with the expectation that mills and dealers will absorb the better qualities of these grades at a premium over these fixed differences at which the government will buy, and with the expectation that the qualities tendered to the government will approach the minimum of the grade. It is also expected that the character of the wheat going into No. 4 and No. 5 grades will be of such wide range that it would not be fair to the producer to name a fixed price at which the government will buy. It has, therefore, been left to the discretion of the government representatives to buy the wheat which is represented by "sample" on the basis of their judgment as to its proper value.

Something Above Ordinary

Manager L. W. Ross, of the Moro Theatre, has decided to discontinue all attractions at Moro Theatre during the summer months with the exception of Saturday nights. He has made arrangements and contracted for the very best in moving pictures for these Saturday shows at the old standard of prices, namely 10 cents for children and 25 cents for grown ups.

Moving picture stars coming to Moro Theatre under this arrangement will include such well known and popular stars as Mary Pickford, Billie Burke, Elsie Ferguson, Douglas Fairbanks, William S. Hart, and others of that standing in the profession.

The pictures shown will be all late creations made under the direction of the Famous Players Lasky corporation and released by the Arcraft Picture Co. They will be all of exceptional pictorial interest and historically correct in the rendition of the theme.

Make it a point to show your appreciation of an endeavor to promote a showing of first class and clean moving pictures in Moro by supporting this effort of Manager Ross to please the Moro public. The same old prices of 10 and 25 cents will be charged the public for a first class moving picture show.

HEADIN' SOUTH

Douglas Fairbanks at Moro Theatre This Saturday.

The latest Arcraft picture, "Headin' South," is a lively melodrama with Douglas Fairbanks comedy trimmings. His mission in the story is a serious one, but he accomplishes it with the usual display of joyful zest in living and doing the impossible, and the laughs are never separated by long stretches of dramatic intensity. "Headin' South" is the name assumed by an officer of the Canadian Mounted Police, who trails a murderer from the Far North down through California and into Mexico. The fugitive is known as "Spanish Joe" and, once south of the Rio Grande, he puts himself at the head of a band of Mexican outlaws and starts to raid on both sides of the border.

"Headin' South" pretends to be an outlaw himself, and becomes a member of the band. The estate of a wealthy Mexican family is captured by the marauders and made their headquarters. "Spanish Joe" is attracted by the beautiful daughter of the house, and the Canadian officer has to use his wits to prevent the girl and the other women of the household from being ill-treated before the arrival of a company of Texas Rangers. He is successful, of course, and is rewarded with the love of the beautiful Spanish maiden.

"Headin' South" has no side issues, and contains sufficient real interest in its serious moments to keep a tight hold on the attention of the spectator. It is not the biggest laughing hit of the Fairbanks series, but is always entertaining, and will cause many a grin and chuckle. The star does his work in the regulation Fairbanks fashion, and everyone knows what that means.

Read Law for Truck Owners

County Judge Krurow requests publication of the law affecting operation of trucks and tractors on roads of Sherman county: Chapter 194, Section 28, 1917 Session Laws.

No motor truck of over five tons capacity shall be driven or operated on or upon any road or highway of this State except with the consent of and upon a permit issued by the county court of the county wherein such truck is sought to be driven or operated. Such a permit shall be issued in the discretion of the county court upon a written petition setting forth the necessity therefor, and such permit when issued shall specify the period for which issued, the business in which said truck is to operate thereunder, the restrictions imposed upon such operation, and the specific roads or highways over which same is allowed to be driven or operated. The county court shall before issuing any such permit collect a fee therefor of not less than Eight Dollars per month. All sums so received under this section shall be paid to the county treasurer of the county wherein such permit is issued, and by him paid into the general road fund of such county.

Indolent Genius.

Indolence has produced a good many works of genius. James Thomson not only wrote his famous "Seasons," but also a very characteristic poem called "The Castle of Indolence." He was himself one of the most indolent of men. It is said that he was too lazy to stretch out a hand to pick a peach from the wall, but stung by a wasp and pecked at it where it hung. But whether that is a libel or the truth, it is certain that most of his poetry was composed in a recumbent position. He always wrote best in bed!

Notice to Contractors

Sealed bids will be received by the county court of Sherman county, state of Oregon, at the county court room in the court house in Moro, Sherman county, Oregon, until Saturday, August 3d, 1918, at the hour of 10 o'clock a.m. for a 60 foot span steel bridge on concrete supports.

The bridge is located about three miles southeast of Moro and crosses Grass Valley creek. Concrete supports will be built by the county. No bid will be considered unless accompanied by a certified check for an amount equal to at least five per cent of the amount of the bid. Plans and specifications and forms of contract may be seen at the office of the county clerk at Moro, Sherman county, Oregon. The right is reserved to reject any and all bids or to accept the bid deemed best for the county of Sherman.

Board of County Commissioners, Fred Krurow, judge, E. D. McKee, commissioner, J. M. Wilson, commissioner

GINN, COLEMAN & CO.

MORO, OREGON

Sherman County Agency for Three Important and Exceptionally Useful Farm Implements

GRAIN TIGHT WAGON BEDS

100 bushel and 125 bushel capacity. The sides built of matched tongue and grooved Poplar lumber, the bottom of Yellow Pine lumber laid on Oak cross sills. Grain slide made of best approved steel.

PORTABLE GRAIN ELEVATOR

The best appliance to load wagons from the field or to unload wagons into bins, storage elevators or railroad cars, and is interchangeable in its work. W. S. Powell, at the Farmers' Union warehouse in Moro, with this machine handles seven sacks per minute loading from the warehouse to railroad car.

PORTABLE WOODEN BINS

Mounted on skids and to be used for wheat storage in the field or at the farm. Capacity 1000 bushels.

Orders Should be Placed Early

Call in and Talk it Over

JOB PRINTING

We Cordially Solicit Your Patronage.

Have You Your COAL?

Now is the time to Fill Your Bin

with Rock Springs Coal

We have plenty of Coal if you order at once. Have just unloaded a car, and another car is on the way.

"Tum-A-Lump"

For all that's Good in Coal or Wood

"See H. U. Martin about it!"

Tum-A-Lum Lumber Co., Moro, Oregon

A man may get tired of ordinary tobacco—but never of Real Gravely Chewing Plug, with its pure, clean taste and lasting quality.



Peyton Brand Real Gravely Chewing Plug 10c a pouch—and worth it

Gravely lasts so much longer it costs no more to chew than ordinary plug

F. B. Gravely Tobacco Company Danville, Virginia

FOSS & CO. Inc.

MORO, ORE.

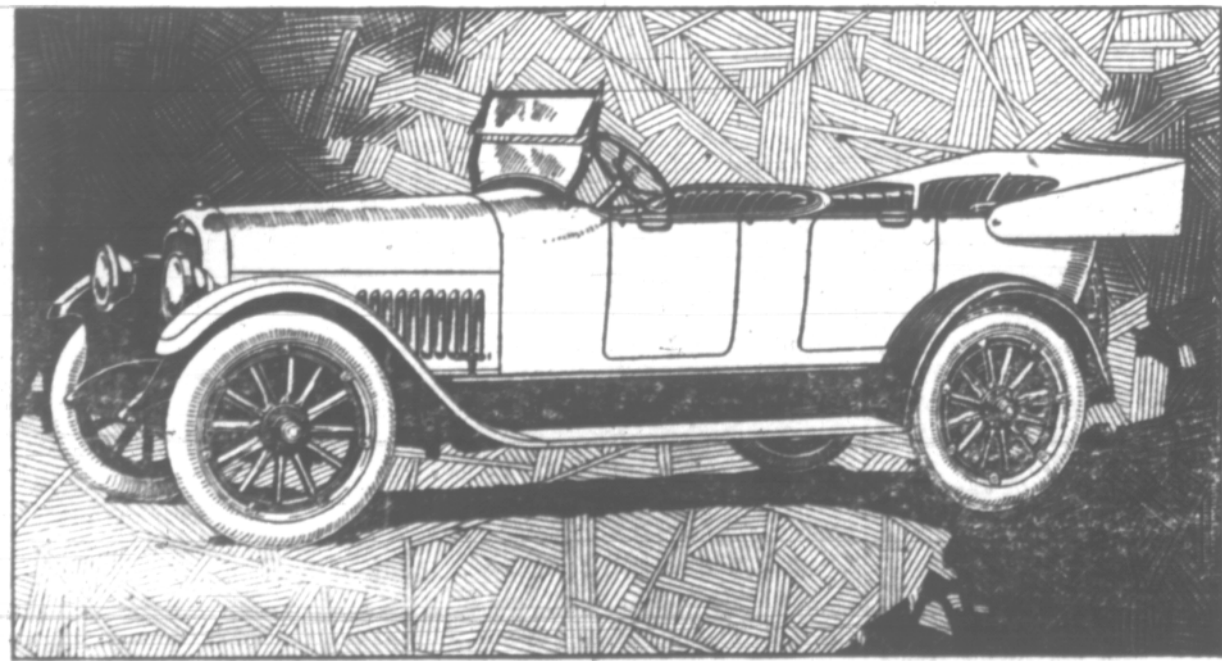
GARAGE

Blacksmith and Machine Shop

Firestone **TIRES** Goodyear

Gas, Oils, Grease and Accessories Auto Repairing and Storage

Iron, Steel and Coal, Hardwood Carriage and Wagon Material.



The New Studebaker Light Six

This new six so completely meets the requirements of quality, appearance, price, economy, room, comfort, and speed that it has been called "the ideal five passenger car." Its lines are clean cut and aristocratic. It is the most economical Quality Six on the market. Its quick acceleration and hill climbing qualities are remarkable, and it combines speed with comfort.

Simple, accessible and easy to drive.

Beautiful in design, thoroughly modern, mechanically right.

Walther - Williams Co., The Dalles, Ore.