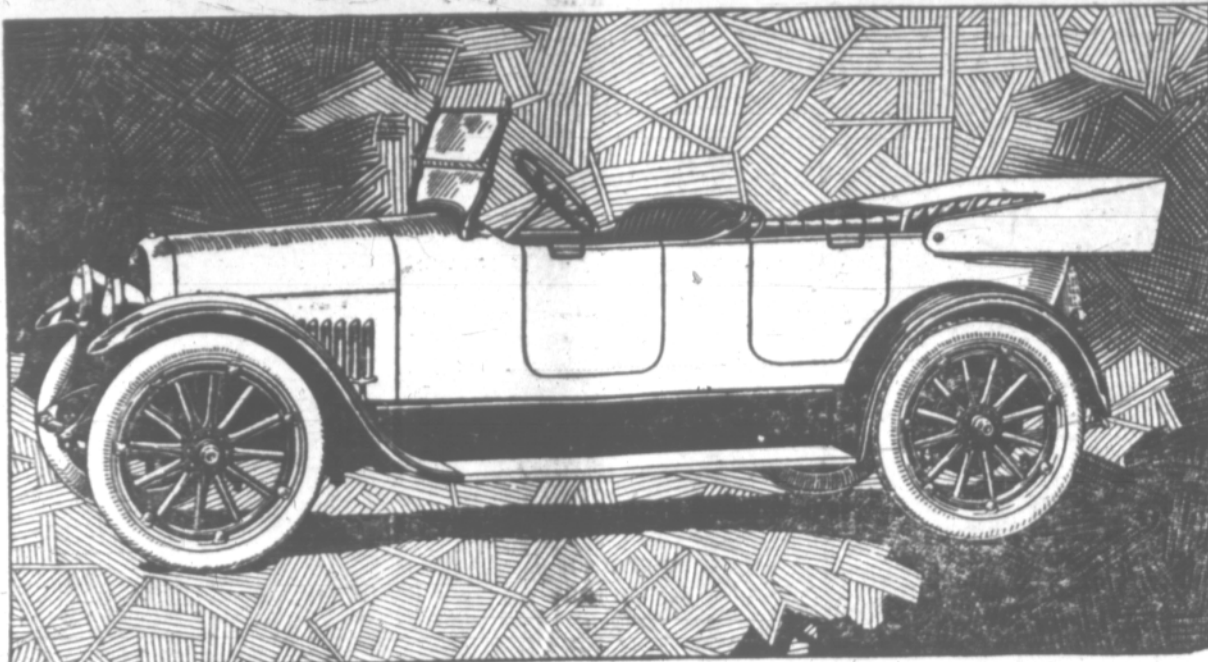


The New Series 19 Studebaker Cars

The new Series 19 Studebaker Cars have improved motors, intermediately located transmission, new axles, bodies, tops, windshields, hoods, fenders, -- in fact, they are new throughout.

Before finally approving these new cars for production, original models of each car were driven 40,000 miles under the severest conditions, through the mountains and over the country roads of the United States and Canada, and

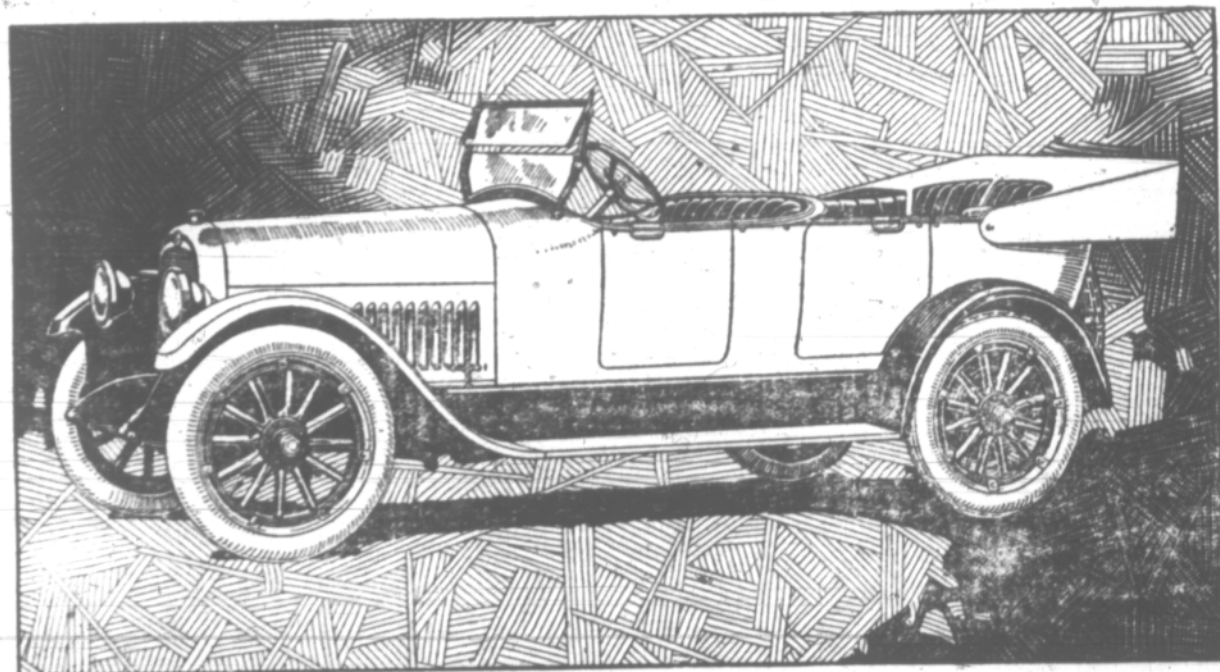


The LIGHT FOUR, 5 passenger, 35 horse power, 112 inch wheel base, \$995.
All prices f.o.b. Detroit, subject to increase without notice.

finally over the Chicago Speedway, with scarcely any evidence of depreciation at the finish.

Studebaker Cars are built complete in Studebaker factories, eliminating the "assembler's profits" with a consequent saving of from 20 to 30 per cent to the purchaser. Studebaker factories occupy 168 acres, contain 4,704,118 square feet of floor space and represent a total investment of over \$15,000,000.

Studebaker Quality, dominant for 66 years, is reflected in these cars.

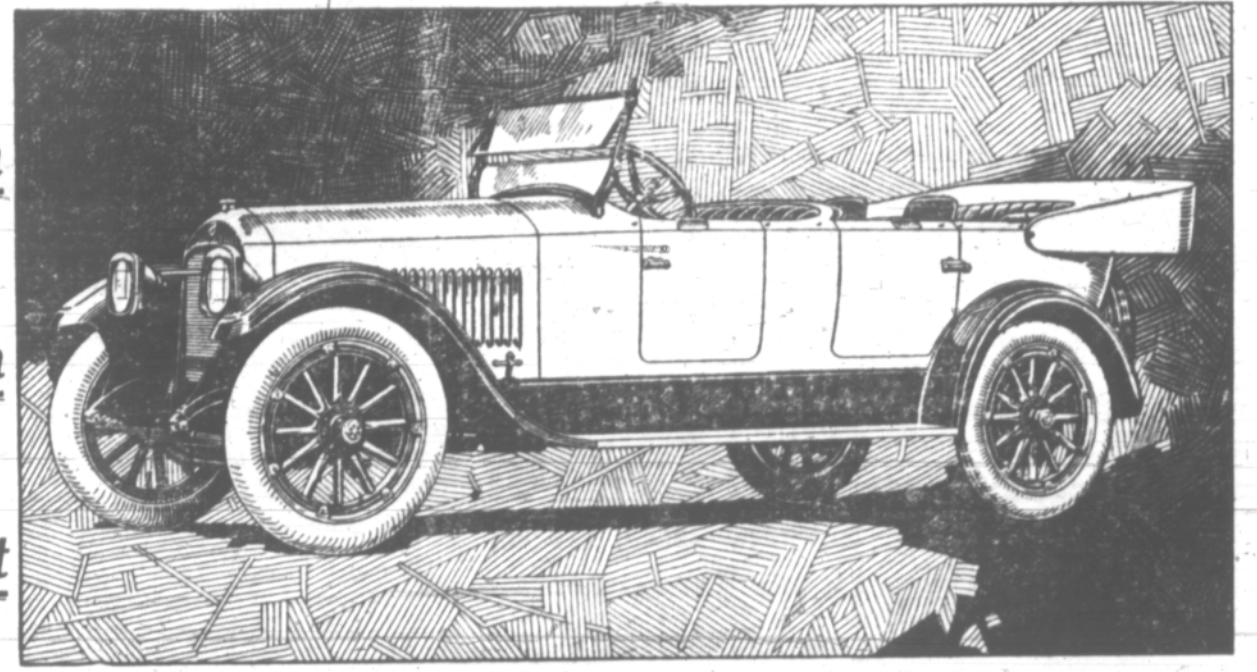


The LIGHT SIX, 5 passenger, 50 horse power, 119 inch wheel base, \$1395.
All prices f.o.b. Detroit, subject to increase without notice.

Beautiful in Design

Thoroughly Modern

Mechanically Right



The BIG SIX, 7 passenger, 60 horse power, 126 inch wheel base, \$1795
All prices f.o.b. Detroit, subject to increase without notice.

Walther-Williams Company, The Dalles, Oregon
Studebaker Sales Agent for Sherman County



The KAISER
"The beast of Berlin"

The Picture that will make your Blood Boil with Rage

The Picture that made New York stand up and cheer like mad.
The Picture that will make 100,000,000 fighting, clawing Americans.
The Picture that will make you thankful that you live in the U. S. A.
The Picture that is setting America afire with energetic patriotism.
The Picture that jammed New York's Broadway Theatre to suffocation.
The Picture that set Boston, Chicago wild with stimulating enthusiasm.
Pronounced greater in power than our President's declaration of war.

Moro Theatre

Friday, May 24th. Admission: 25c and 50c

The Observer.

MORO, OREGON.

Official Paper for Sherman County.

FRIDAY May 17, 1918

Entered as second class matter at the post office at Moro, Oregon, July 25, 1891.

C. L. IRELAND..... Manager.



"My Country 'Tis of Thee, Sweet Land of Liberty."

The Harvest Help and Wage Question.

The County Agent has been asked time and again within the past two weeks—what is being done to insure help in harvest? And what are the wages to be.

As to the first, we will say that every available man will be pried loose from other occupations to help at that time. For instance as a starter the sheriff and his assistant will both get out and help in harvest and Mrs. McKean will take charge of the office. Stores and other industries will no doubt be able to spare some of their help and thus we will be using every bit of man power available. After that we will draw upon the soldiers from the Cantonment Camps but only for the help we cannot supply in any other way.

Now as to wages, any move which Sherman County might take individually to set harvest wages would have little weight unless other counties should take similar action and adopt a corresponding scale. We are glad to be able to state that arrangements have already been made to have the farmers of the different eastern Oregon counties send representatives to Pendleton, June 10th, where they will meet representatives of the wheat district of eastern

Washington and pass upon a wage scale to cover the different jobs in harvest.

This has been asked for by the farmers and is the farmers move through out. We ought to have four or five delegates representing the different parts of Sherman county and in order that these men may be duly elected and also know the desires of those whom they represent, four or five meetings will be called in the county probably next week. Watch for the announcement and be sure and be present to state your views. The man who represents your section can't very well represent you unless you help crystallize the sentiment of your group.

Feeding Young Chicks

Young chicks are better off without food until after they are 36 or 48 hours old. Then comes the first feeding and it is very important if the little chickens are to get the right start.

Some of the good feeds are:

Hard boiled eggs.

Johnny cakes.

Stale bread.

Oatmeal or rolled oats.

Maashes, mixed without milk.

These five foods may be fed separately or in combination. The maashes should be in a crumbly and not a sloppy condition. The Johnny cake for chickens can be made this way: 1 doz. infertile eggs or 1 1/2 lbs sifted beef scraps.

10 lbs. of cornmeal.

Milk enough to make a pasty mash.

1 tablespoon baking soda.

Bake until done.

For the first week feed the chickens five times a day of the above mentioned foods, but gradually work in a substitute for one or two of these feeds, consisting of a mixture of finely cracked grain, equal parts by weight, cracked wheat, finely cracked corn, and pinhead oatmeal or rolled oats, with a little of the cracked peas or broken rice and charcoal mixed in. A commercial chickfeed may be substituted.

This ration may be fed until they are two weeks old. After that the chicks can be put on a grain and a dry or wet mash mixture. And a feed three times a day will be sufficient after the first week.

GINN, COLEMAN & CO.

MORO, OREGON

Sherman County Agency for Three Important and Exceptionally Useful Farm Implements

GRAIN TIGHT WAGON BEDS

100 bushel and 125 bushel capacity. The sides built of matched tongue and grooved Poplar lumber, the bottom of Yellow Pine lumber laid on Oak cross gills. Grain slide made of best approved steel.

PORTABLE GRAIN ELEVATOR

The best appliance to load wagons from the field or to-unload wagons into bins, storage elevators or railroad cars, and is interchangeable in its work. W. S. Powell, at the Farmers' Union warehouse in Moro, with this machine handles seven sacks per minute loading from the warehouse to railroad car.

PORTABLE WOODEN BINS

Mounted on skids and to be used for wheat storage in the field or at the farm. Capacity 1000 bushels.

Orders Should be Placed Early

Call in and Talk it Over

JOB PRINTING

We Cordially Solicit Your Patronage.