

Who is  
L. J.  
Simpson?



Paid adv.  
issued by  
Simpson for  
Governor  
League  
411 Selling  
Building  
Portland  
Oregon

Republican Candidate  
or the Nomination for **GOVERNOR** Primary Election  
Friday, May 17

Born, September 1, 1877.  
Son of the late Capt. A. M. Simpson, pioneer  
shipping and lumberman.  
Educated at Mt. Tamalpais Academy and Uni-  
versity of California.  
Worked as a laborer in 1889, at a \$1.50 per day  
in the ship yards on Coos Bay, Oregon.  
Rose from the ranks to executive head of a large  
lumber and shipping industry, employing many  
thousands of men.  
Started the town of North Bend, 1901. Fostered  
community progress, founded and developed  
many enterprises.  
Mayor of North Bend, 1902 - 14.  
Patriotic work in connection with Liberty Loan,  
Red Cross and War Stamp activities, for the last  
twelve months.  
His executive ability, his business experience and  
his constructive policies, DO make him:

**"Your Kind of a Man for Governor"**



## ANNOUNCING New Millinery Styles

I have established a Millinery busi-  
ness in Moro at the Moro Trading  
Company store where all the latest  
styles in merchandise that is partic-  
ularly pleasing to ladies will be on  
display commencing

**Friday March 15th**

The ladies of Sherman county are  
invited to call and make a selection.  
Your patronage will be appreciated  
in my effort to please.

Miss Helen Hansen, Moro

## Extra Special Attraction

**MORO THEATRE**  
Thursday, April 25th

## "The Girl Philippa"

Vitagraph Special Blue Ribbon Production  
in Eight Parts Featuring

**Anita Stewart**

The story of a French cabaret girl who was forced  
to spy on those who frequented her little cafe.

**ADMISSION 15 AND 25 CENTS**

A "WANT" ad in THE MORO  
OBSERVER will reach more  
people in Sherman County than  
by any other medium available.

## The Observer.

MORO, OREGON.

Official Paper for Sherman County.

FRIDAY ..... April 19, 1918

Entered as second class matter at the  
post office at Moro, Oregon, July 25, 1891.

C. L. IRELAND ..... Manager.



"My Country 'Tis of Thee, Sweet Land  
of Liberty."

### Different From Former Years

During the last week the po-  
litical situation in Sherman  
county has wakened from its  
lethargy and sleep of years and  
there is now a genuine political  
contest in nearly all contests  
for offices to be filled this year.

It has been the somewhat  
doubtful pride and boast of the  
average Sherman county resi-  
dent that in "his" county there  
were no political parties when  
it came to filling the offices and  
passing around the fruits gen-  
erally accruing to the political  
party dominant in county af-  
fairs.

Sherman county in times past  
has been the wonderment of  
those who study political action  
because of the fact that with  
the advent of the direct pri-  
mary into the scheme of things  
political the same old "give and  
take" trading of offices seems  
to prevail to a remarkable ex-  
tent. In looking over the bal-  
lots of the last several elections  
there is a vacancy of aspirants  
for office within either of the  
dominant parties where the  
other party has a candidate.  
This year this is changed and  
there are contestants for the  
most important offices from  
both parties and each contest-  
ant seems to have a very good  
idea that under all circumstan-  
ces they are the ones to be  
elected by the people.

Ginn, Coleman & Co. have  
sold a four-row bean planter  
and a four-row cultivator to  
Joe Hendricks, who will plant  
150-acres of beans on the L. V.  
Moore farm this season. They  
also have sold two outfits like  
the above to Harry Key, who  
intends putting in 450 acres of  
beans on the C. L. Powell farm  
this season. These machines  
are from the bean belt of Cali-  
fornia and the kind used in that  
section by successful bean  
growers.

### Sherman County Candidate For State Representative

The people of Sherman county  
have placed in nomination for the  
republican nomination for state  
representative for the 28th district  
comprising Wheeler, Gilliam and  
Sherman counties, the name of  
A. M. Wright.

Mr. Wright is, comparatively, a  
young man and is one of our  
pioneer farmers. He has also had  
more than the usual acquaintance  
with the sheep and stock industry  
and is now actively engaged in  
business at Mpto.

A peculiar situation of the three  
counties is that they are also set  
apart as a separate state senatorial  
district.

The political districting of the  
three counties into the two legisla-  
tive districts allows two repre-  
sentatives and one senator, one office  
to each county.

Sherman county in the past has  
been neglectful of the right to be  
represented by one of the three  
offices and is now only asking that  
this consideration be again ex-  
tended to Sherman county by the  
other two counties of the district  
both having candidates for the  
office and one, Gilliam county,  
having at this time the senator for  
the district.

A. M. Wright, in speaking of  
his candidacy said:

"I would deem it an honor to  
represent so loyal and patriotic a  
people as those of the 28th state  
representative district in the fol-  
lowing platform:

"I will use my best endeavor to  
advance the interests of the state;  
to be economical, but not to the  
extent of retarding development  
or hampering efficiency; and to  
aid and support a vigorous pro-  
secution of the war to a successful  
conclusion and will do my duty  
to the very best of my understand-  
ing and ability."

If Mr. Wright is chosen by the  
people of the 28th district as their  
state representative, the Observer  
is satisfied that his official actions  
will be a source of pride to all.

H. U. Martin picked up a  
China pheasant rooster in the  
road Sunday evening when re-  
turning from a visit at the  
home of his brother, W. J. Mar-  
tin, northeast of Moro. The  
bird was not able to take care  
of itself, having a broken wing  
partly healed, caused apparent-  
ly by flying against a telephone  
wire.

### Playing Politics

A political sensation has been  
caused by the announcement of  
Gawald West that he will seek  
the democratic nomination for  
United States Senator. When  
C. L. McNary was appointed to  
fill the vacancy caused by the  
death of Harry Lane, West told  
friends that he would support  
McNary for re-election if the  
latter made good, West assum-  
ing at the time that McNary  
would be nominated in the pri-  
maries. With West now an-  
nouncing his candidacy it is the  
belief that West considers Mc-  
Nary has not made good, and  
he is fearful that R. N. Stan-  
field will win the republican  
senatorial nomination.

It was West who appointed  
McNary to the Supreme Court  
and there has been a strong  
friendship between them. Con-  
struction placed upon West's  
latest act is that he discovered  
on his recent visit to Portland  
that Stanfield was making so  
much progress that there was  
grave doubt as to McNary's  
winning.

This is said to have upset the  
plans of democrats who are  
registered as republicans and  
who intended voting for Mc-  
Nary. If they do not change  
their registration back to the  
democratic party they are ex-  
pected to throw votes to Stan-  
field already increasing Stan-  
field's strength, on the theory  
that West, if nominated, wants  
to oppose Stanfield. The out-  
standing fact of West's entry is  
that McNary supporters are dis-  
couraged. Nothing, say the  
politicians in the democratic  
and republican ranks, would  
have induced West to take this  
step if he was convinced that  
McNary had been making good  
at Washington.

### Card of Thanks

I wish to thank all who helped  
my husband and myself at the  
time of Mr. Crumley's accident  
and removal to the hospital.

Mrs. Geo. L. Crumley

The Douma Brothers dug out  
nine coyote pups Monday from  
a badger hole found near their  
farm Monday afternoon. The  
parents were not at home when  
the boys called and they are at  
liberty to continue levying trib-  
ute on farm animals dear to  
the coyote appetite.

The local war examination  
board has been notified that  
call No. 29 takes 251 men from  
Oregon and that the quota as-  
signed to Sherman county is  
two men, who will leave Sher-  
man county about May 1st for  
Fort McDowell, California.

# SERVICE

Service lingers in the memory long after the price is  
forgotten. The pungent, incisive and impressive art of  
efficient service never fails to carry home to the customer  
its effectual appeal for everlasting consideration.

Never in the history of our commercial activities has  
there been so critical a period as now. Industrial inter-  
course has been seriously interrupted by conditions that  
have been without parallel. Emergency needs for lumber  
must be met with quick attention. The severe car short-  
age and over taxed transportation facilities make it ex-  
tremely hard to get lumber and supplies from the mills.

At our Moro yard you have immediate access to one  
of the best assortments of Timbers, Dimensions and  
Boards that we have ever carried in all our years of con-  
tinuous service. Our unsurpassed facilities enable us to  
meet the exigencies of a critical situation promptly.

Now at our Moro Yard

**4000 Posts, 200,000 ft Lumber,  
Shingles, Lime, Cement, etc.**

"See H. U. Martin about it"

**The Tum - A - Lum Lumber Company**  
Moro, Oregon.

## GINN, COLEMAN & CO.

MORO, OREGON

Sherman County Agency for Three Important  
and Exceptionally Useful Farm Implements

### GRAIN TIGHT WAGON BEDS

100 bushel and 125 bushel capacity. The sides built  
of matched tongue and grooved Poplar lumber, the  
bottom of Yellow Pine lumber laid on Oak cross  
sills. Grain slide made of best approved steel.

### PORTABLE GRAIN ELEVATOR

The best appliance to load wagons from the field  
or to unload wagons into bins, storage elevators or  
railroad cars, and is interchangeable in its work.  
W. S. Powell, at the Farmers' Union warehouse in  
Moro, with this machine handles seven sacks per  
minute loading from the warehouse to railroad car.

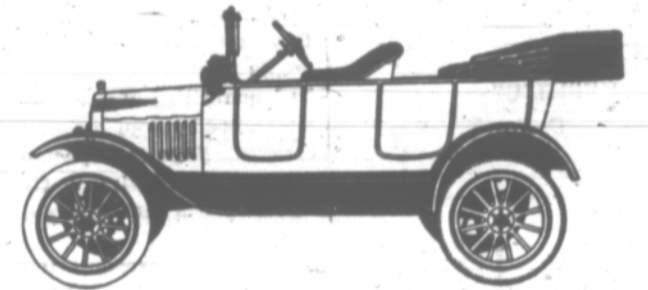
### PORTABLE WOODEN BINS

Mounted on skids and to be used for wheat storage  
in the field or at the farm. Capacity 1000 bushels.

### Orders Should be Placed Early

Call In and Talk It Over

**Ford**  
THE UNIVERSAL CAR



Touring Car, \$450 f.o.b. Factory

Walther-Williams Co., Foss & Company  
The Dalles, Oregon Moro, Oregon  
SALES AND SERVICE STATION  
WRITE US FOR PRICES

Ford Accessories,  
Supplies and Repairs

## MULTNOMAH HOTEL

PORTLAND, OREGON



Invites the People of Moro  
and of Sherman County  
to enjoy its facilities  
when in Portland

GARAGE OPERATED BY HOTEL

Eric V. Hauser, Owner. H. H. Cloutier, Manager

## JOB PRINTING

We Cordially Solicit Your Patronage.