

Grass Valley

by Anna Balzer

A grain fire enlivened the Grass Valley community Tuesday when a fire started on the Bob Schilling place near the site of the Old Michigan school and burned between 60 and 70 acres before it could be batted out by men.

Joseph Gregg Wilson Jr., son of Dr. Joseph G. Wilson of Moscow, Idaho and Mrs. Wilson, was married July 24 at Rochester, Minn. to Miss Joan Mae Lance. He is a grandson of the late Mr. and Mrs. Jake Wilson of Kent.

Mrs. Mark Bird and infant son of Grass Valley were dismissed from a hospital in The Dalles July 22.

CARD OF THANKS

We wish to thank most sincerely the neighbors and the Grass Valley fire department for their help in putting out the fire that burned more than 60 acres of wheat Tuesday.

Mr. and Mrs. Bob Schilling

County Ramblings

County Agricultural Agents

Many home orchard peach and prune trees in Sherman county are infested with the root borer. Larvae or "borers" burrow in the crown and roots of the trees. Young trees one to two inches in diameter may be completely girdled by the borers. Older trees are weakened and seriously devitalized. Look for the presence of sap, gum and frass which exudes from the burrows of the borers around the base or main trunks of the tree. Two tablespoons of 50% vegetable powder per one gallon of water sprayed on the infested areas until dripping will help control this pest.

Cow Herb

Several farmers in the Kent area had some difficulty in con-

trolling an annual weed known as Cow Herb . . . sometimes called Saponaria vaccaria. The plant is a grey green annual widely branching stems, with pink petals, with dark gray or black pebbled seeds. The plant has been confused with this in many respects, especially in the fact that Corn Cockle is hairy and Cow Herb is smooth.

Bob Tatum and Lester Wilson have had a particular problem with this plant. Infestation may occur in other areas of the county or other ranches in this area. It is also a problem in the Antelope area of Wasco county.

Last week in cooperation with Einar Helgestad, fieldman, Grass Valley Grain Growers, seeds of this plant were collected. These are being sent to the Farm Crops Dept., OSC, for greenhouse weed control test. Screening tests can be run during the winter months followed by field trial in the Kent area next spring in an attempt to find a more satisfactory control measure than is presently available or known.

Trial Plots on German Alfalfa

German Alfalfa, Devil's Shoestring weed, or Death Weed, a deep rooted perennial plant, for a number of years caused considerable concern to farmers in the valley where fine sandy loam soil in the

extreme northern section of the county. The plant occurs on range land and has been impossible to do much with in summer fallow but has not been the answer to this weed problem. On June 22 a trial plot was established on the Hildred Zell ranch to test various materials that may be effective in eradication of this plant on cropland.

Various materials applied were MCPA at 3 pounds per acre; 2,4-D TP at 3 pounds; 2,4-D T at 1 and 3 pounds per acre; Amitrol T at 3 pounds; Amitrol T at 1 pound; with 2,4-D T at 3 pounds per acre; 2,4-D acid; and Benzoic acid in the form of TBA at 10 pounds per acre. Results of these trials in the next year or two should give us some lead to satisfactory control measures for this plant.

Blue Flowering Lettuce Control

Several perennial plants occur in Sherman county that have given farmers problems in the past. Sodium Chlorate has been used on many of these plants most of the time being quite successful. Blue Flowering lettuce is a perennial noxious weed that occurs in small quantity in the county with inadequate control measures to date. Trials on a patch on the Edgley Alley ranch near Grass Valley were applied last fall.

Materials tried were TBA, PBA, Fenac and Sodium Chlorate. Results indicate that the Benzoic acids preferably TBA are more effective than Sodium Chlorate. One hundred percent control of the plant was obtained by using 30 pounds of TBA while Sodium Chlorate at 6 pounds per square rod or 960 pounds per acre was only 80 percent effective. Lesser amounts of TBA gave 95 percent or more control of this plant.

Sherman County Fair.

Fair time is just around the corner. Entry date for the fair will be August 17 with judging and fair program scheduled for August 18-21. The 4-H and FFA members exhibiting will need to give immediate attention to preparing their exhibits for the fair once harvest has been completed. The 4-H members who have questions about fair plans should contact their local leader or call the extension office, JO 5-3230, Moro.

Fair premium books are off the press and available for fair exhibitors. Copies should be avail-

ZENITH TV
Sales & SERVICE
SERVICE ON ALL MAKES
Call ANDY PAULSON
Telephone JO 5-3513

HERMITAGE

Straight Bourbon from Kentucky



Nature's finest bourbon \$2.95 pt
There is none better! \$4.50 fifth

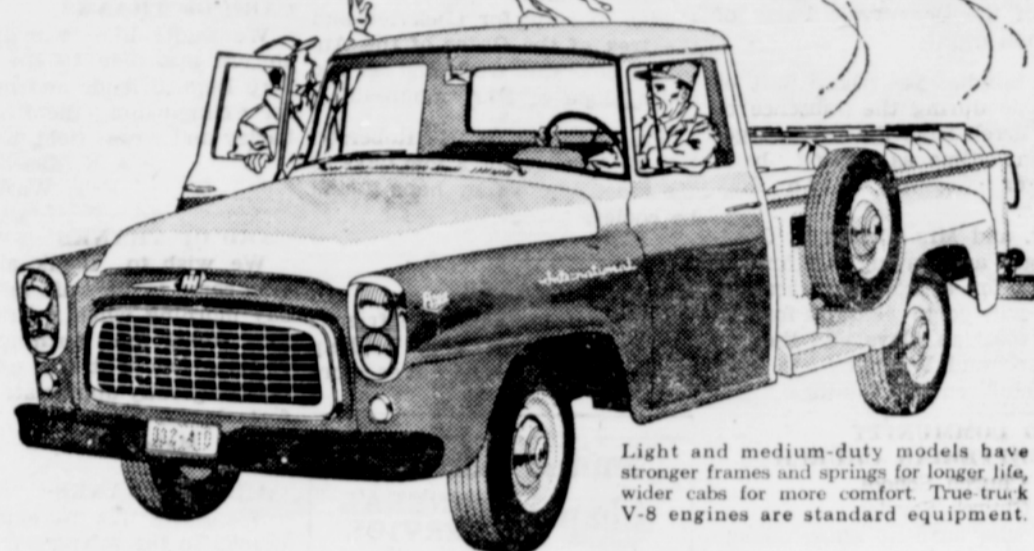
THE OLD HERMITAGE CO., LOUISVILLE, KY. DISTRIBUTED BY INTERNATIONAL DISTILLERS PRODUCTS COMPANY, 86 FROOM

TIMBER LAMINATED STRUCTURES

- Grain Storage
- Commercial Structures
- Machine Sheds
- Pre Cut Buildings

Contact: Clair L. Balzer
Moro, Oregon
Phone: Jordan 5-3673 (after 5 p. m.)

Depend on trucks?



Light and medium-duty models have stronger frames and springs for longer life, wider cabs for more comfort. True truck V-8 engines are standard equipment.

Depend on us for the right ones!

We offer the world's most complete line of trucks.
We know which of our many farm-proved trucks match your needs.
We provide the most thorough truck service.

See us about trucks... we know!

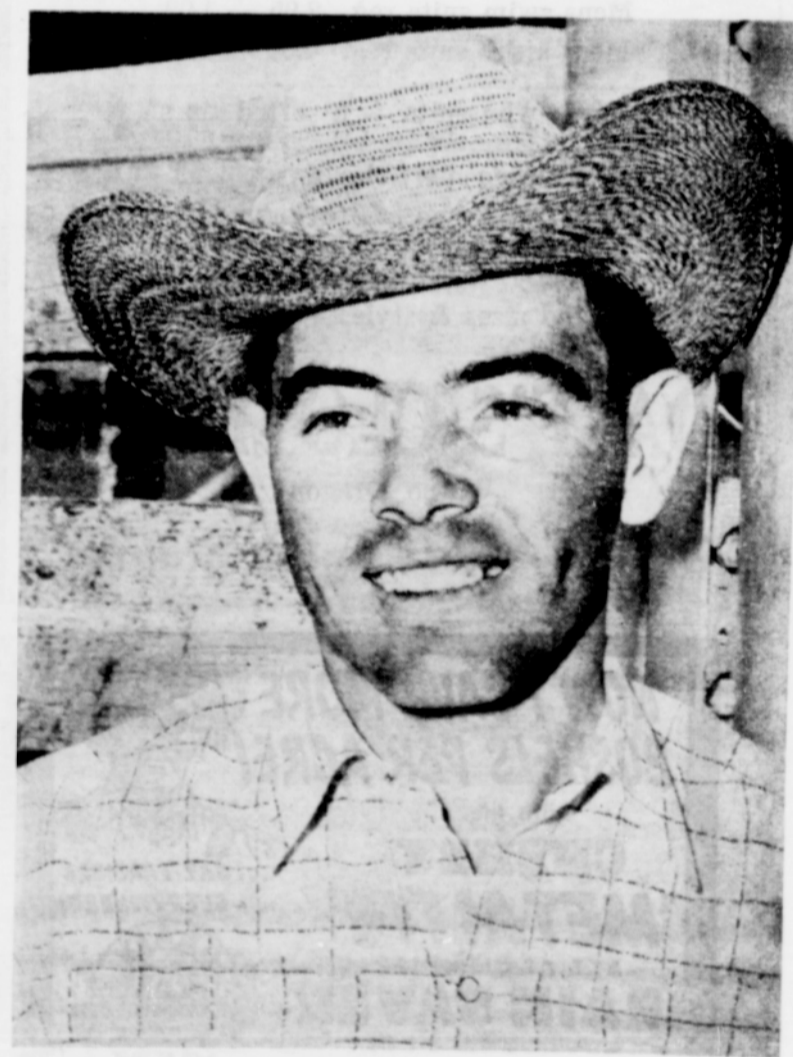
CUSHMAN EQUIPMENT COMPANY
MORO, OREGON Phone JO 5 3555

IH INTERNATIONAL TRUCKS
WORLD'S MOST COMPLETE LINE

The Dates AUGUST 18-19-20-21 Sherman County FAIR

ALSO and most important is the Exhibits of Stock, Grain, Cake, Pictures, Fancy Work and 4-H and FFA Showings

Plan to see
All of it



You've seen this young man and probably had a chance to cheer him either at Saddle Bronc riding, Bareback riding or Bull riding. He doesn't like to walk. He is Daryl Hobday who lives at Peck, Idaho when he isn't following the Tucker Rodeo outfit around the west. So far this year he is eighth in RCA standings having won \$3446 riding the ponies bareback. Well, sir, it often looks as if it would be worth it. Eight seconds on top of the kind of horses Tucker owns gives a young man a fine appreciation of time.

Not many mairs hereabouts have RCA approved shows but Sherman county has, has long had and probably will for a long time. We like to see the good ones.

Tucker's Rodeo Is the Best in the Business