

Moro Personals

Mrs. John DeMoss has returned to Phoenix, Arizona from her recent trip to Oregon. They are moving from Mesa back to Shady Ranch Trailer Lodge at 3041 N. 44th St., Phoenix.

Born: To Mr. and Mrs. Gordon McKee December 12, a son, in Portland. Mr. McKee is the son of Mr. and Mrs. Marion McKee, formerly of Wasco and Moro.

Mr. and Mrs. Roy Masiker of Hood River, Mrs. May Schiller of Newport and Mrs. Vi Chandler of Portland, son and daughters of Charley Masiker, called on Mrs. Ora Pettz and Mr. and Mrs. E. E. Barnum Sunday.

Mr. and Mrs. John Parker drove to The Dalles Sunday and Mrs. Maggie Barnum went down with them and remained a few days in that city.

Bill Hall and Tommy Thompson are in Corvallis this week to attend the annual conference of extension workers and research men held in December.

H. F. Miller, owner of the new station being built in Moro, was here from The Dalles Wednesday.

Mr. and Mrs. Theodore Johnston write from Honolulu, Hawaii, that they expect to be there most of the winter and send home Christmas greetings to Sherman countyans.

Born: To Mr. and Mrs. Robert Boynton Wednesday, December 14, twin girls. The first was still born. Graveside services were held Tuesday afternoon at 2 p. m. at the Moro cemetery.

Mr. and Mrs. Ted Thompson drove to Portland Tuesday taking her mother, Mrs. Jack Lawrence, down with them for a medical check up.

Postoffices at Grass Valley and Moro will be open Saturday afternoon to receive Christmas packages report Glendora Smith and Lloyd Johnson. No mail orders or CODs will be taken after 12 o'clock.

Elmer Halsted, one time instructor at the CCC camp here, dropped into town Thursday while on his way to Redmond to give a school for firemen in how to put out and prevent fires.

Do your CHRISTMAS SHOPPING at

The ZIPPER



Plan Your Season's Production Financing now!

BUDGET LOANS
SAVE YOU MONEY

You Pay Interest on Each Dollar Only 1/2% The Time You Use It!

Mid-Columbia Hotel Dalles Bldg. The Dalles, Oregon

PRODUCTION CREDIT ASSOCIATION
"Credits as near as your mailbox or phone"

PCA Trying To Buy Out FICB

The Mid-Columbia Production Credit association and 29 similar associations in Idaho, Montana, Oregon and Washington will eventually own the Federal Intermediate Credit Bank of Spokane and the Production Credit Corporation of Spokane if plans now under consideration are successfully carried out, J. Merton Steh, secretary-treasurer of the local association announced today.

Mr. Steh, has just returned from a four-state meeting of Production Credit association officers and directors at Spokane, November 30, where plans to merge the two district credit institutions and for farmers to gradually become their owners were discussed. Also representing the local association at the Spokane meeting were W. R. Bailey, president and Riddell Lage, vice-president.

The ownership plans, which will be presented to Congress, were explained by Earl H. Brockman, Caldwell, Idaho, a member of the Federal Farm Credit Board, R. B. Tootell, Governor, and Harold A. Miles, director of Short-Term Credit Services of the Farm Credit Administration, both of Washington, D. C. Mr. Brockman told the group that the plans were developed by the Federal Board after a series of meetings held throughout the country last summer at which the board asked Production Credit associations and others interested to make suggestions. As a result of these meetings and after considering the recommendation of a majority of the 12 district Farm Credit Boards, the program was drafted as the best means of carrying out the request of Congress to develop a method of making the entire farm credit system farmer-owned.

Both the Production Credit Corporation, which supervises the operation of Production Credit associations, and the Intermediate Credit Bank, through which the Production Credit associations obtain most of their funds to loan to their farmer and rancher-members, are presently government owned, Mr. Steh said. If the plans now under consideration are adopted and successfully carried out it would complete the task of retiring the last of the government capital in the entire cooperative farm credit system. Mr. Steh said the Federal Land Banks, the local National Farm Loan associations and most of the Production Credit association are already farmer-owned. In the Spokane district, which comprises Idaho, Montana, Oregon and Washington, 24 of the 30 Production Credit associations are presently owned by their members. In addition, the last session of Congress adopted long-range plans for farmers' marketing, purchasing and business service cooperatives to own the banks for cooperatives.

The Mid-Columbia Production Credit association extended \$1,529,755 in credit during the first 11 months of 1953, according to Mr. Steh. Farmer members borrowed \$119,970,951 from the 30 Production Credit associations in the Spokane district during the year ended June 30, 1953.

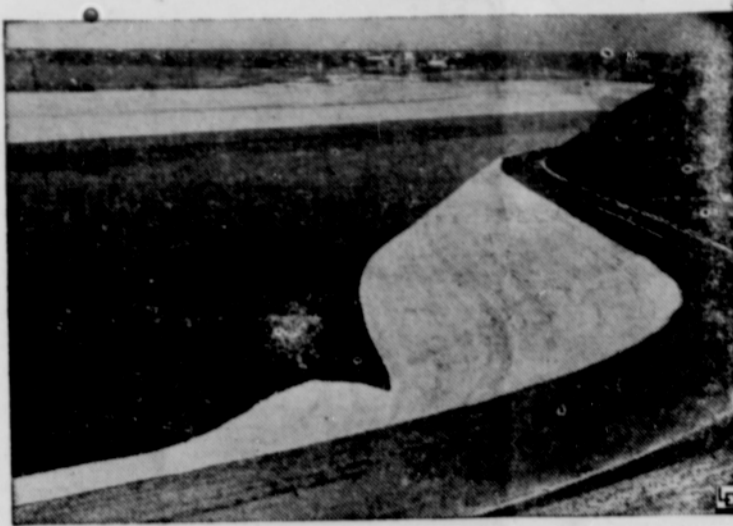
Mr. and Mrs. Hollis Bull and sons of Portland were guests Sunday with his parents Mr. and Mrs. Mac Bull for the day.

Mrs. Lester Barnum and sons and Mrs. Clara Kock spent Thursday in The Dalles shopping.

Spencer & Libby
funeral home
PHONE 3234
800 KELLY AVE

A name closely associated in the public mind with dependability

Cut Costs By Storing Oil In Earthen Pit



A major oil company has discovered a simple method of slashing storage costs. Instead of using the traditional steel tanks, the Creole Petroleum Corporation has scooped out a great earthen pit. The pit, costing more than a million dollars holds 3,500,000 barrels of oil. Covering nearly thirty acres, the basin provides the first outdoor storage facilities in Venezuela. It is five feet deep and is encircled by a 30-foot dike. Construction took three months of around-the-clock excavation. According to company officials, oil can be stored in the big pit at a cost of about 30 cents a barrel compared with \$1.65 to \$2.00 for storage in tanks.

Before going ahead with the new project, experts were called in from the Massachusetts Institute of Technology. They discovered that the clay of Amuay, Venezuela, was of sufficient consistency to keep oil from seeping through. Outdoor storage has another advantage: It will enable the company to maintain normal refinery operations during the slack summer months. Creole is the Venezuelan affiliate of the Standard Oil Company (N.J.).

Wheat Growers Back Federal Plan

The Oregon Wheat Growers league has endorsed the "soil bank" proposal for taking land producing surplus crops out of production and putting it into a reserve to save its productive capacity for the future needs of the nation.

The league while approving continuation of efforts to obtain adoption of the self-supporting domestic parity plan for wheat, approved the soil fertility bank plan as a practical measure to use until production and demand are in better balance. The league believes the soil bank plan would fit in with the domestic parity plan, which it has been backing for several years as a "realistic pricing and marketing program for wheat".

To be sound, wheat growers believe, any soil bank program should be applied to all field crops, and should provide adequate compensation to operators for diverting land from production to soil-conserving uses. Such payments, the league holds, should be based on the productive history of the land, and should cover taxes, interest, depreciation, reduced earning capacity of the farm and all costs in establishing a suitable soil conserving crop.

Application of the soil bank program either should be compulsory, or payments should be high enough to attract voluntary participation, the wheat men held.

Growers instructed their officers to take the strongest action possible to obtain postponement of the effective date of the so-called "modernized parity formula" on wheat. This formula will mean a wheat price drop of about 26 cents a bushel in the next two years. Besides this, under flexible supports and acreage controls, wheat men through 1956 will have a 41-cent price cut as compared to 1954 and a 35 per cent cut in production.

The league approved the program of the U. S. department of agriculture in discounting wheat of inferior quality, and went even further in recommending that wheat varieties not meeting quality requirements be placed on a state penalty list.

On the legislative front, the league voted financial support to the federal plan for apportionment of the state legislature, and urged adoption of a state sales tax with proceeds earmarked for public schools.

The league, which was chosen by the U. S. department of agriculture this fall to activate a market development program on wheat in Japan, heard a progress report on this program from Richard Baum, league secretary.

Baum, who returned from Japan just before the convention, said two projects to increase wheat foods consumption in Japan has been set up, and eight more were awaiting approval by Japanese government agencies.

Wasco Church Plans Christmas Program

Friday, December 23 will be the date of the presentation of the annual Christmas program for the Church of Christ in Wasco. The program will begin at 8:00 p. m. Nearly 50 children, young people and adults will join to present the Christmas story in pageant, drama and song. Featured during the evening will be a pageant written in Portuguese for the mission in Brazil and translated into English. There will be numbers in singing and pantomime by the Cherub choir and climax of the evening will be the presentation of the drama "Born to Die". Everyone is invited to share in the evening of spiritual enrichment.

Following the program, all who wish will join in Christmas caroling and then return for games and refreshments.

Christmas Sunday the services at the church will be held earlier than usual. Bible school will begin at 9:45 a. m. and the church service at 10:45 a. m. and dismissed at 11:30 a. m. Mr. Shields' topic will be announced later.

Holiday Will Be Dangerous Again

With Christmas and New Year's day both falling on Sunday this year, the association of Casualty and Surety companies estimated today that the two year-end holidays will bring accidental deaths to 800 people on the nation's streets and highways. Another 400 probably will die in the intervening week, bringing total traffic deaths for the holiday season to 1,200.

Thomas N. Boate, manager of the association's accident prevention department said that officially both holidays extend from 6 p. m. Friday until midnight of the following Monday. "390 people", he said, "will die over the Christmas weekend and 410 more over the New Year's weekend. During that time an additional 30,000 people will be injured in traffic accidents."

"The Christmas-New Year season, as a time of happiness and celebration, usually brings forth a greater number of parties and informal get-togethers than any other time of the year. The partygoer who is over-indulgent is in line to kill or be killed on the highway. It should be obvious by now that the person who drinks should not drive. Similarly, this holiday season always brings extra traffic and congestion. When a motorist loses his temper, or tries to make up for delays by speeding, it is just a matter of time until he contributes to the traffic toll."

"The fact that more than 30,000 American homes will be touched by sorrow this holiday season is a sobering thought. Particularly when a little restraint and self-control could avert the bulk of this useless highway misfortune."

Teachers Leave Jobs

The average Oregon school district lost 20.04 per cent of its certified school personnel over the last year, according to a teacher turnover study recently completed by the Research Bureau of the Oregon Education association.

The study shows that of 14,038 certificated persons in Oregon elementary and secondary schools, 2,813 were dropped from the personnel lists of individual school districts between last fall and this fall. No reasons are given for the dropouts, but it can be assumed that some took jobs with other districts in Oregon and elsewhere, some retired and some went into other lines of work.

Greatest turnover percentage was in the second and third class districts which were tabulated by counties. The average turnover of these smaller districts was 28.84 per cent.

Dairies Get Bigger And Much Fewer

Trends toward better and fewer dairy farms, coupled with a price-cost squeeze, are spurring farmers to get bigger or to get out of the dairy business, Oregon State college agricultural economists report.

A big drop in the number of Oregon farms keeping milk cows is shown in preliminary 1954 census figures. Only 33,170 farms reported one or more milk cows last fall—5000 fewer than in the spring of 1950.

Further emphasizing the trend to specialization, the economists point out that only 9866 Oregon farms sold whole milk in 1954 compared to 13,173 in 1949 and 15,010 in 1944. More milk was sold per farm in 1954, however.

Despite the trend, the economists expect some farmers to turn back to milking cows as a break-away from dwindling returns from other livestock and most crops.

Closer herd culling, more emphasis on milk and less on fat, greater use of artificial breeding,

herd testing, and better feeding are among suggestions.

Substituting lower-priced grain for high-priced hay in Oregon dairy rations may cut feed costs this winter. For the longer pull, the economists favor more pasture and silage.

Recent steps by the dairy industry to shave farm-to-market expenses have reduced Oregon milk distribution costs to among the lowest in the nation. Early this year, Oregon marketing costs and margins for fluid milk averaged about 9.9 cents a quart compared to a national average of 12.2 cents. The shift from cans to tank-handling of milk, collection and delivery of milk on alternate days, and wider use of paper containers are changes that are helping to hold down marketing costs.

Game Commission Prophecy 1956 Bucks

How many bucks will be available to hunters next year?

The answer to this and other important questions will be determined by game commission field agents during the big game surveys and range studies now in progress. Big game surveys will continue on all winter ranges throughout the winter months.

During December and into January, herd composition will be determined by classifying the number of bucks, does, and fawns

in each range. A study is conducted as big game animals move to the winter ranges and must be done before the bucks lose their antlers. Herd composition is essential in determining the number of bucks available for hunting and breeding purposes and the number of fawns available for future hunters.

Incomplete reports from game agents indicate that the buck, doe ratio is normal and that plenty of big racks escaped the guns of the hunters this past fall.

In addition to herd composition, range studies are also being conducted to measure the amount of browse available for big game winter use. Sample plots have been established on all big game ranges, and measurements of the growth and vigor of the browse species are made each year. Another study will be conducted in the spring to determine the amount of winter utilization.

Big game population trends—whether the herds are increasing decreasing or remaining constant—and mortality studies will be conducted in late winter and early spring when all big game will be using the winter ranges.

Now Open
MORO BEAUTY SHOP
same location
PHONE 512

Beefo's

at the Capitol City

Come in out of the wind.

Get that chill out of your bones. Quit Shaking, man, your spilling it. We'll warm you up.



Moro Grain Growers Ass'n. OFFICE

will be closed Saturday Afternoons

EMPLOYEES

will be present to handle sales of Farm Supplies

ONLY the office will be closed

now for Olympia!

Sparkling refreshment coming up. Take a moment to enjoy the satisfying good taste of Olympia... then carry on, refreshed.



SALAMANDER Oil Burners

See them at—
Moro Lumber & Fuel Company



"It's the Water" that makes the difference
OLYMPIA BREWING COMPANY, Olympia, Wash. U. S. A. *®



NEW DEAL BATTERIES

\$4.⁰⁰ per year

NICLSILVER BATTERIES

Any 6 Volt Battery 15.95 4yr. Guaranty
Moro Motors Garage

OUR TOYS ARE NOW ON DISPLAY

GIFTS for all

Tree Lights Tested Free

Sleds	\$ 5.25
Tree Stands	1.00
Tank Heaters, electric	35.95
Electric Heaters	from \$10.95
Coco mats	2.20
Rubber mats	1.95
Plastic table cover	.95
Ironing Board	6.45

RANCH & HOME STORE
MORO, OREGON

For that one away from home, the one you want to remember you, the family and Sherman county, the

Sherman County Journal

will be a nice gift for Christmas in fact will be a gift each week and as full of home town doings as a country picnic.