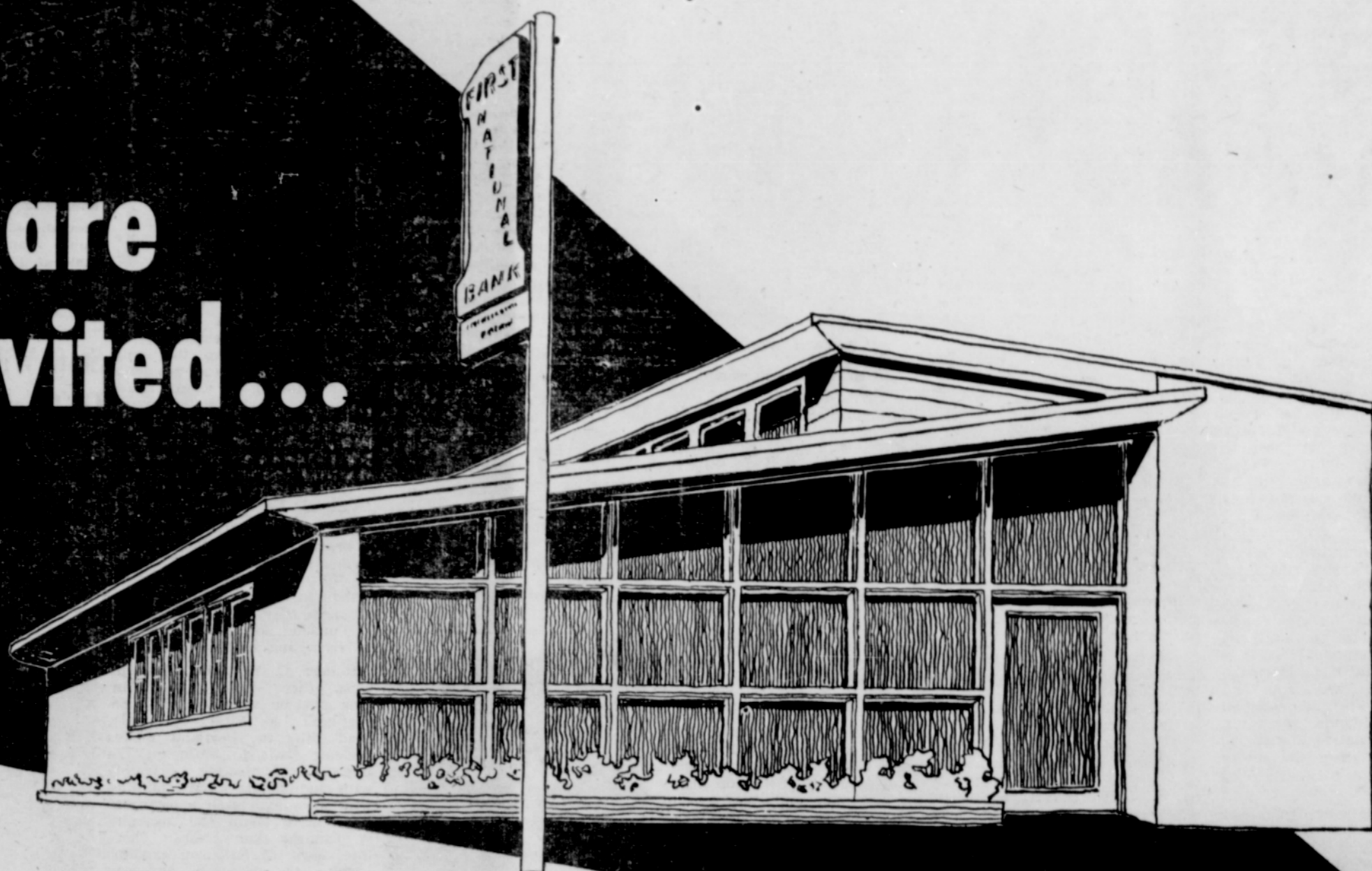


You are  
invited...



... to attend

# OPEN HOUSE

Saturday, November 15

10 a.m. to 8 p.m.


Come see the bank we've built for your convenience.

Our new building is nearly three times larger than the former quarters. There is new furniture and fixtures . . . the latest in incandescent and fluorescent lighting. For faster, more efficient service there is a spacious lobby . . . four paying and receiving windows.

In our new building there's a new modern reinforced concrete safe-deposit vault for the protection of your valuables, and two booths for privacy when opening your safe deposit box.

Outside there is more than 3,000 square feet of parking area adjoining the bank for your convenience.

We hope you'll come in . . . look around . . . see how our new bank can make daily banking more pleasant.

**FIRST NATIONAL BANK**  
SHERMAN COUNTY BRANCH  
"LET'S BUILD OREGON TOGETHER" **OF PORTLAND**

MEMBER FEDERAL DEPOSIT INSURANCE CORPORATION