

Sherman County Journal

Fiftieth Year No. 34

Moro, Oregon, Friday, July 1, 1938

Official County Paper

Of Oregon— Its Government and People

By A. L. Lindbeck

One building of the state capitol group was completed and another formally started this week.

The \$2,500,000 modernistic capitol was accepted for the state from the contractors by the capitol reconstruction commission after a thorough inspection. The building will be open for public inspection on the afternoon of July 2 and all day July 3. State departments are expected to move into the new structure shortly after July 1. Formal dedication has been postponed until the opening day of the 1939 legislature.

Shortly before the commission started on its inspection tour, Governor Martin laid the corner stone for the new \$1,000,000 state library now under construction. The structure, across the street from the new capitol, will be completed January 1.

At the cornerstone ceremony the governor told the crowd of about 100 to "move in closer. I want you to hear this speech. I won't be making them much longer." Then he praised the state's progressiveness in library planning and building during the past 50 years.

Hardly had his words faded away than the official inspection of the new capitol started. Francis Keally, New York architect, who designed the building, ushered the reconstruction commission from the dome to the basement.

The building is completely bare of furniture with the exception of the house and senate chambers. The two big assembly rooms are now carpeted and equipped with oak desks for each member, as well as theatre-style seats in the spectators' balconies. The seats for the senators and representatives have not yet arrived. Furniture from the present offices will be used until next fall when the new furnishings arrive.

The contract for completion of the structure is not complete despite the acceptance. There are still two stone statue groups to be installed in front of the building flanking the broad steps, and a gigantic statue of an early pioneer to surmount the tower on top of the building. Much work, painting and other details will be finished later.

With 31 jurors impeached for the July session of circuit court here, action is expected soon in the state's condemnation proceedings against three property owners who have refused to relinquish their property north of the new capitol building for the appraised value set by the state capitol reconstruction commission.

Owners of the old Elks Temple in Portland this week offered the building to the state as a state office building for \$690,000. The owners said they would donate a 50 by 100 foot lot for parking space and remodel the building to suit the needs of the state. No action was taken by the board of control as Earl Snell, a member, was absent.

Drunken driving was responsible for the revocation of 64 operator's permits during May. There were 94 licenses revoked during the month, Secretary of State Snell announced.

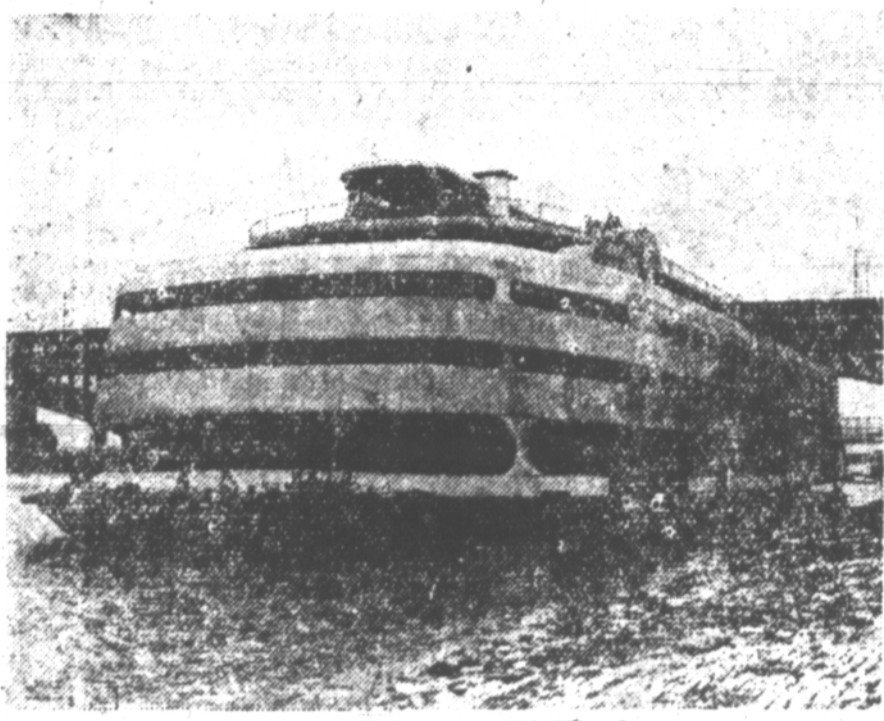
Employment in Oregon during the past few months has been on the upswing, two state officials reported this week.

Guy V. Lintner, director of the Oregon State Employment service, said the number employed during June would show an increase over the previous months of 1938. He credited the upswing of jobs to resumed sawmill operations in Marshfield and Klamath Falls, the pea harvest in Pendleton, the seasonal work in other parts of the state.

J. C. Joy, chairman of the state industrial accident commission, reported that the number of men working in May in Oregon industries under the workmen's compensation law had increased since February. The total April payroll was larger than the payroll during the same period last year. However, the number employed is below the number of last October when the high mark since 1929

(Continued on Page Two)

Streamlined Boat for Missouri



This streamlined river boat now under construction on the St. Louis levee is beginning to assume the graceful lines which will make it the most beautiful craft on the Mississippi. It will be used as a pleasure steamer plying north and south from St. Louis.

Roy Dugger In Hospital With Spotted Fever

Roy Dugger who works on the Glen King ranch, was taken to The Dalles hospital Saturday night with spotted fever. Probable cause was being bitten by a tick while on a trip to Shaniko as no infected ticks have been found in Sherman county and no local resident has suffered from the disease heretofore. Dugger is feeling much better since receiving treatment and is expected to recover.

Extended Payments Now Coming Due

The provision in the Farm Credit Act of 1935 granting Federal land bank borrowers the privilege of deferring payments on the principal of loans outstanding on June 3, 1935, expires July 10, 1938. E. M. Ehrhardt, President of the Federal Land Bank of Spokane, said today.

After July all Federal land bank borrowers will be required to make regular payments on the principal of their loans on each interest payment date.

Many Have Paid

President Ehrhardt said that despite the fact that many farmers were not required to make principal payments, over \$5,400,000 in principal payments was paid the Federal Land Bank of Spokane in 1937. This included \$1,381,000 in payments on extensions and \$2,212,000 in loans paid in full and special payments on principal, the balance of \$1,813,000 being regular principal payments.

However, the temporarily reduced interest rates on all loans will continue until June 30, 1940. On most Federal land bank loans through national farm loan association a year, and for loans made directly from the banks, 4 per cent.

Oregon Farm Price Index Down

With the Oregon farm price index down two points to 62 per cent of the 1926-1930 average, the report shows that potatoes, apples, butterfat, wool, eggs, dried prunes and wheat are in the worst relative price position, in that order. The price index as of mid-May declined two points from the month previous and was 31 points below the peak of April, 1937.

Overflying granaries of American wheat are still indicated by every advance estimate. The latest forecast on winter wheat is for 760 million bushels, which is 214 million bushels more than the 10-year average of 1937 to 1936. In addition, spring wheat conditions on June 1 indicated a crop in excess of 260 million bushels. Thus the total wheat crop in the United States will probably be in excess of a billion bushels, or a surplus production over domestic needs of around 300 million bushels, without counting at least that much carry-over.

The complete report may be obtained at county extension offices.

Organization Of Republicans Made For County

Republicans of the county perfected their organization Saturday night in Moro and the following were chosen to lead in watching for the welfare of the party here: M. E. McKee, chairman; Mrs. Anabel Fortner, vice chairman; Giles French, state committeeman; H. D. Proudfoot, congressional committeeman. Precinct committeemen are as follows: Rufus C. A. Tom and Mrs. Adeline McDonald; Locust Grove: H. D. Proudfoot and Dr. S. L. Richelderfer; Wasco: W. E. Tate and Mrs. Anabel Fortner; Klondike: H. A. Walker and Mrs. Ove Hansen; Monkland; Wilford Belshe and Mrs. Tom Frazer; Moro: M. E. McKee and Mrs. Dorothea Moore; Grass Valley: J. B. Coon and Mrs. T. M. Ruffe; Rutledge: D. L. Reynolds and Mrs. V. B. Bakin; Kent: J. M. Wilson and Mrs. Corlis Andrews.

School District Consolidation Loses

The proposed consolidation between school district 32 and the Grass Valley district failed to pass Monday when the vote was taken because residents of the Rosebush district voted against it unanimously. It was agreed, however, that that district would vote for consolidation as soon as any one of the other districts transporting to Grass Valley would agree to do so. Other districts are Buckley and Rutledge.

City Cistern Water Level Dropping

The past few hot days have reduced the water level in the cistern and caution is urged on water users that wastes be eliminated in the use of water. Peculiar is the fact that more water is drawn from the cistern at night when peaceful small town residents are supposed to be safe in bed instead of using water. A drop of over 50,000 gallons in a night indicates that some one is sleeping in the shower bath. The pump has been in operation 24 hours per day.

Wasco Matron Dies After Long Illness

Mrs. Maybelle Yocum, wife of J. R. Yocum, died in The Dalles about four o'clock Thursday morning after a prolonged illness. She was 29 years of age.

Surviving her are her widower, two small children, her parents, Mr. and Mrs. S. J. Brock, a sister Mrs. Donald Banta and two brothers, Sam and Virgil of Twin Falls, Idaho.

Funeral services will be held from the Christian Church in Wasco Saturday at 2 p. m., with the Rev. Carey officiating. The Rebekahs, of which the deceased was a member, will be in charge. The funeral will be conducted by Zells.

Electric Rates Reduced This Year

Reduction in rates charges for electricity for domestic use have been made by 137 of 172 Oregon cities included in survey for the two years ending January 1, 1937. It was announced in a bulletin "Domestic and Residential Electric Rates in Effect January 1, 1937 in Oregon," just published here by the Bureau of Municipal Research of the University of Oregon and the League of Oregon cities.

The bulletin includes figures obtained in a survey made by the federal power commission for the two year period. It further points out that in 1937, reductions in rates affording a saving to people of more than \$500,000 were made. Amount of savings for other years was not totalled.

By far the greater number of electricity users in Oregon now have a five cent top step per kilowatt hour, it is pointed out. The tables also show an excellent record for municipal plants, with Eugene low in the state as well as in the 10,000 to 25,000 population class.

Rates in detail for the 172 cities as well as comment and observations, are included in the report.

Harvest Nears With Crops Up To Expectations

Winter Wheat Yields Will Be High With

Spring Grain Promising

Harvest time is here for some fields. Hugh Shall started cutting a field of volunteer wheat Wednesday with Worth Evans machine. Around Wasco many machines will be running right after the Fourth with some probably starting before that time. By the middle of the month harvest in the north end of the county will be general. The south end of the county will be much later with the first of August being the date when general harvesting is expected.

For two weeks, or since the rain, there has been optimism about the prospective yield. Turkey Red wheat, which comprises about a half of the acreage of the county, has assumed that golden glow of color near the head that, to the initiated observer, means a good harvest. Estimates run up to forty bushels per acre and some farmers insist that their fields will make that much.

Spring wheat over the county is looking fine at present and there is still a chance that in the south end of the county it will beat the winter wheat. It has a long way to go, however, and a week of hot weather might reduce it to the shriveled stage that was found last year, even after heavy rains in June.

Spring Grain Still Green

Most of the spring grain is still very green although in drier spots it has begun to turn to the russet color of well ripened Federation.

There is talk of a bumper crop exceeding previous highs, but this is not considered likely from present indications by most practiced observers. It will be a good crop, around 2,500,000 bushels or more, and the quality may be good.

Difficulty of estimating the total yield is encountered because of the lack of information about the total acreage. Government regulations are that 14% be taken from this year's grain acreage, but another provision permits the farmer to put in his entire place this year and comply in 1939 and in some cases this has been done. The normal seeded acreage of 135,000 may be exceeded this year and if it is the crop may be larger than expected.

Grass Valley Gets Defeat; No Revenge

Grass Valley's urge for revenge was not equalled by their ability as baseballists Sunday and they lost to The Dalles by the identical score of the previous week 11 to 10 although the second game required but the usual nine innings.

It was really errors that defeated Grass Valley for they made more errors than did the visitors. The outfield missed flies and the infield let a few grounders through to account for enough runs to lose the game. Miller pitched for the first six innings and McKay took up the burden until the eighth when John Rolfe relieved him.

Old Ed Woolsey pitched the game for The Dalles and although unable to run he could still fool the boys at bat sufficiently to win a game. In the ninth Grass Valley made two runs and had the tying run on base when the batter went out.

Wasco went to White Salmon and up to the sixth inning had a lead of 10 to 2 only to get careless and lose out 11 to 10 after a hectic last part of the game. Too much confidence and taking it easy when ahead lost the game for the Sherman countians according to their own report.

Bids Asked

Sealed bids for painting the Fair Association buildings and for the paint for same will be received by the Fair Board up to Tuesday, July 5. The board reserves the right to reject any or all bids. LaRoy Wright, secretary.

Democrats Elect H. H. White as Chairman

Organization of the Sherman county Democrats was done Monday night at Wasco with H. H. White named as county chairman, Velma McKean, vice chairman, Wm. McKean, secretary-treasurer, W. F. Jackson, state committeeman and Tom Garrett, congressional committeeman. The entire list of precinct committeemen as announced are: A. T. Striker and Mrs. Pearl Brackett, Rufus; Carl Anderson, Mrs. Nina Hennagin, Locust Grove; H. H. White and Mrs. Sybil McMillan, Wasco; W. B. Rice and Marie Barnett Cooper, Klondike; George McDonald and Mrs. Clara Houston, Monkland; John Bueher and Mrs. Cecil Eakin, Rutledge; Art Justesen and Mrs. Tate Justesen; T. M. Garrett and Mrs. Arch Cantrall, Grass Valley; W. F. Jackson and Mrs. Velma McKean, Moro.

Irrigation Dams Planned By Board

A preliminary program for six irrigation dams in eastern Oregon, all urgently needed by the region they can serve, has just been prepared in the form of a report by the Oregon State planning board, it was announced by Ormand R. Bean, board chairman. The six are Rock Creek and Clear Lake in Wasco county, Beaver Creek in Crook county, West Eagle Creek in Baker county, Fox Valley Reservoir on Cottonwood Creek, Grant county, and Tumalo Creek in Deschutes county.

The Rock Creek project has been thoroughly surveyed, plans prepared and the improvement district organized under state law. The other six are in various stages of organization.

Costs of the various dams are estimated as follows: Rock Creek, \$37,000; Beaver Creek, \$40,000; Clear Lake, \$50,000; Fox Valley, \$25,000; Tumalo Creek, \$50,000. The cost of the West Eagle Creek project has not as yet been computed.

Power Lines To Be Extended

To extend Columbia river's low cost power to residents throughout the Northwest, J. D. Ross has applied to Public Works Administrator Harold L. Ickes for an allotment of \$21,375,725 for transmission lines and substations.

This application was made public today by the chief of the Bonneville Project, who disclosed his plan for a super-power network to connect the hydro-electric projects of the Columbia Basin.

The Bonneville Administrator revealed that he had recommended construction of Umatilla dam and the Snake river project in order to hasten the day when a coordinated navigation-power-irrigation development would meet the needs of an expanding Northwest.

"Power and water—that is the vital combination for the people of Oregon and Washington and Idaho," he said. "Bonneville is the first completed step in our Columbia Basin program. It must be used unselfishly to help solve the navigation, power and land problems of the entire Northwest."

The Ross proposal calls for an arterial system that will carry Bonneville power in every direction. It will be the foundation for a publicly-owned transmission system to link up all of the future hydro-plants of the Northwest, and connect with our major networks for economic interchange of energy. A major circuit will be a 230,000 volt line from Bonneville to Grand Coulee dam, with an additional circuit returning by way of Pasco.

To serve Portland, the Willamette Valley and the Oregon Coast, Mr. Ross asked for a PWA allotment that will enable him to build a 110,000 volt line from Vancouver across the Columbia river, with a double circuit southward to Eugene. Bonneville power would reach Eastern Oregon and Washington by a line of the same voltage extending from Pendleton to Umatilla and Pasco. Included in the application to Administrator Ickes is the proposal to connect the dam with Hood River and The Dalles.

Grasses, Grains, Tillage Methods Shown Field Day

Results of Nearly 30

Years of Experimentation

Brought To Farmers

The annual field day at the experimental station brought out a goodly number of farmers who were interested in the developments made at the station in grasses and grains and tillage methods. There were also a number of extension service workers anxious to obtain the latest information from a reliable source to take back to those who rely on them for advice.

The small grass nursery near the station buildings was first visited and the variations in Crested Wheat Grass shown. The trees that have been grown in recent years were also cause for comment by Mr. Stephens who led the party and who has done much to encourage windbreaks of trees around farm buildings.

Next to the "tin can farm" where Merrill Oveson, new station head, explained the methods used to determine the moisture needs of the wheat-plants and the effect of fertilizer. Virgin soil, he said, absorbs water in 16 1/2 minutes, that virgin soil that has been cropped every year absorbs the given amount of water in 33 minutes and old soil requires 4 hours and 15 minutes to absorb the moisture indicating a physical change in the soil from cropping.

Spring grain requires 1700 grams of water to one gram of grain and winter wheat takes 1280 grams of water to one of grain.

Grass Valuable

At the first stop in the field Mr. Stephens stated that land that produces ten (or fifteen) bushels of wheat or less should be put into Crested Wheat Grass according to trials made. The oldest stand of this grass in the northwest was shown. It was first established here on a patch of scab land near the field shed and will produce a good crop of seed this year.

In connection with the rows of alfalfa E. R. Jackman explained that all long time successful agricultural countries had at some time to depend on legumes to bring back the productivity of the soil or to retain it. He presumed that such a time would come to this country.

Along the spring wheats and the more luxuriant winter wheats past the wheat nursery, the rotation methods, the tillage methods, the crowd-walked to stop and listen to brief talks about the experiments and the result obtained in the twenty six years Mr. Stephens has been in charge of the station.

Trashy fallow was shown and it was explained that it sometimes give equal yields to plowed fallow but that weeds are a bad feature of it until some new method of cultivation is found. Joe Balenger, county agent of Morrow county, and Russel McKinnon, county agent of Gilliam county, told of the result of trashy fallow methods in their counties saying that it was a check on wind erosion, a partial check on water erosion but that it was not entirely satisfactory from the cultivation and yield standpoint.

William Teutsch, assistant county leader, talked briefly of the work done by D. E. Stephens and regretted his departure for other work in Washington. Mr. Stephens, whose last field tour it was, paid his respects to the farmers with whom he has worked and expressed his reluctance to leave the field he chose twenty six years ago.

Snell Urges

Careful Driving

A call to drive carefully over the Fourth of July holiday has been issued by Secretary of State Earl Snell, who points to five traffic deaths which occurred in this state during the double holiday last year. Observation of moderate speeds, planning of trips which can be made comfortably during the two-day period, and avoidance of late night driving are urged by Snell.