

# Sherman County Journal

Forty Ninth Year No. 40

Moro, Oregon, Friday, August 6, 1937

Official County Paper

## News of the State of Oregon from Salem

By A. L. Lindbeck

Proponents for a state office building for Portland believe they have found a way around the constitutional debt inhibition which has been threatening to wreck the program. Their answer to this problem is found in a supreme court opinion handed down more than nine years ago in connection with the construction of a dormitory at the university of Oregon through a bond issue to be retired from rentals. In that case the supreme court ruled that inasmuch as the proposed bond issue did not involve any debt against the state but was to be paid entirely out of a special fund to be raised from rentals it did not run counter to the constitutional inhibition. The same plan has since been used in financing other buildings at institutions of higher learning.

While the plan is very similar to that proposed for financing the projected office building there is one important difference which might upset the whole program if it should be taken to court. That difference is to be found in the fact that whereas the university dormitory was a "utility" and the bonds were to be retired through rentals paid by the students the proposed office building will be state owned and the rentals which are to pay for it must come either out of the legislative appropriations or out of revenues which would otherwise go into the state treasury.

Completion of a 9 1/2 mile project on the Coast highway between Hugg point and Manzanita, south of Cannon Beach, will shorten the distance between Tillamook and Seaside by 14 miles according to R. H. Faldock, state highway engineer. The project which includes a 1278-foot tunnel under arch cape, now under way, as well as grading and surfacing the entire section, will not be completed for at least three years. Total cost of the improvement will be \$620,000. This is the last link in the Coast highway stretching from Astoria to the southern border of the state on which \$27,000,000 has been spent in the past 20 years.

Secretary of State Snell is not going to take any chance on the urge to "step on the gas." He has had a governor installed on his car set at 50 miles an hour. Snell also plans to install governors on all cars used by employees of his department.

Leo Spitzbart, manager of the state fair, reports an unprecedented demand for space from exhibitors in many departments. Eight counties have already indicated their intention of displaying their products this year although the opening date of the fair is still more than a month away.

The rising cost schedule is hitting the state in more than one spot. J. M. Devers, attorney for the highway department, reported this week that increasing prices of farm lands is being reflected in higher costs for rights of way.

State officials are giving consideration to the matter of improving or removing the heating plant that serves the capitol group of buildings. Originally located in the basement of the old capitol the heating plant is now some distance east of the new state house. Its appearance, with a ragged chimney rising above the surface of the ground for 50 or 60 feet into the air detracts greatly from the attractiveness of the capitol grounds. One proposal involves sinking the plant deeper under the ground and covering it with a lawn. This would also necessitate stream-lining the smoke stack to harmonize with the design of the capitol. Another proposal involves moving the plant to a new location some distance from the capitol site but convenient to railroad trackage in order to save money on fuel oil. In either event another boiler must be added to the plant to accommodate additional buildings now being planned for immediate construction.

Clarence D. Wagoner, Portland real estate dealer, is being en-

## Goldendale Sends Boosters For Big Jamboree

Homer Beale, W. A. Chapman and Joe Fry were here Wednesday afternoon advertising the Goldendale Jamboree which will be held in the Washington city August 13-14-15. All were dressed in shirts that disturbed the peace and calm of the mid-harvest day, their hats would have been appropriate covers for alfalfa shocks and their enthusiasm for their show was louder and bigger than either. Beale, who sells shocks for a living, shocked the natives by telling of the high professional standing of performers at Goldendale who will all be members of the national rodeo association. All visitors who attend the Jamboree, which is a community enterprise, were promised a good time with all of the trimmings.

## White Top To Be Treated At Park

The white top at the city park gate will be treated this week end by the county agent who has the carbon bi-sulphide for this purpose. First it will be necessary to thoroughly wet the ground in order to try to save the trees under which the weed is growing. Marshall Williams is getting the ground in shape and the treatment will be applied as soon thereafter as possible.

## Trashy Fallow Holds More Moisture

The ability of trashy fallow to prevent water erosion, even under exceptional conditions, was demonstrated this summer in an area in Umatilla county where a near coulburst struck. A field with trashy fallow held the downpour with no perceptible erosion, while a neighboring field which had been summer fallowed the old way was washed out to plow depth. In five years of testing on the Pendleton branch experiment station there has been only one year in which the yield on disked trashy fallow was significantly lower than on the old clean cultivated type.

## Earl Snell Hopes For Safer Drivers

The publicity given the safety work promoted by my department and the general use of the material sent out on this important matter, is most encouraging and gives cause for hope that definite results will be attained. The news papers in every section of the state have shown their desire to assist in this work, and many columns of space are devoted to it weekly.

There are almost as many ideas of how to meet this problem as there are people. Ask any group what action they would take and you will get a variety of answers that will not only show an amazing divergence of opinion, but also a most interesting variety of plans for improving driving conditions on our streets and highways.

Those who have made a study of this problem appear to be agreed on only one thing—that something must be done. The large amount of favorable comment is greatly appreciated—and criticism is just as welcome. The motor vehicle operator who goes to the trouble of writing to tell us where we are wrong and the editor who devotes his space to suggesting things that should be done and are being neglected, are equally conscious of the traffic safety problem, and doing something toward its solution. Regardless of his own belief, the fact of his interest is proof conclusive that results are being attained.

Education and enforcement are the two necessities at the present time. They can be brought about in the fullest degree only by an awakened public conscience, an aroused and militant demand for safety. Discuss the problem with your neighbors and friends, your officers and your courts.

Suggestions are welcomed. Many valuable ideas have been received from people reading these weekly articles. If you have a remedy to present, it will be appreciated and receive careful consideration.

## Committee Clears Trouble Between Labor, Farmers

Kent Man Aids Conciliation Move Started By State Grange and A. F. of L.; Unionization Not Forced

The complete report of the Grange and A. F. of L. committee appointed to conciliate differences between labor and the farmers indicates that no trouble will be encountered by farmers in hauling their own products or that temporarily hired wheat bucks will be unionized.

Luther Davis of Kent is a member of the committee which met in Portland Tuesday of this week. Complete accord was reached at a meeting held today by the Farm-Labor Relations Committee on the matter of hauling farmers' crops. This committee is composed of members representing the State Grange and the State Federation of Labor.

The subject had been brought to the attention of the committee by the action of a mass meeting of farmers held at The Dalles late last week.

Misinformation Charged

The Grange-Labor committee found that The Dalles incident had grown out of misinformation of the farmers. The committee heard a representative of the Teamster warehousemen's union, who stated that the right of farmers to handle their own crops was not questioned, but that commercial haulers who masquerade as farmers would be asked to unionize their operations. In the case of warehousemen operating continuously the teamsters will proceed with organization work. It was explained that the teamsters do not consider it desirable to organize the men employed for only a week or two or a month in the small co-operative country warehouses which operate only for that period of time. Therefore, the farmers may be assured that they will encounter no difficulty in handling their own products in trucks recognized by state law as such.

Members Pleased

All members of the committee express themselves as gratified by the outcome of the conference and as convinced that there will not be serious conflict between farm and labor groups when the facts are known in any particular case. The committee deprecates the spreading of false statements which are at times credited to labor officials and at other times to representatives of farm organizations. The committee declares that suggestions of violence by either side are without justification and resent the implication that farmers may resort to the use of pitchforks. Every member of the committee is convinced that a common understanding of each others problems and a desire to co-operate will maintain harmonious relations between the two groups, rather than to resort to pitchforks and brick bats.

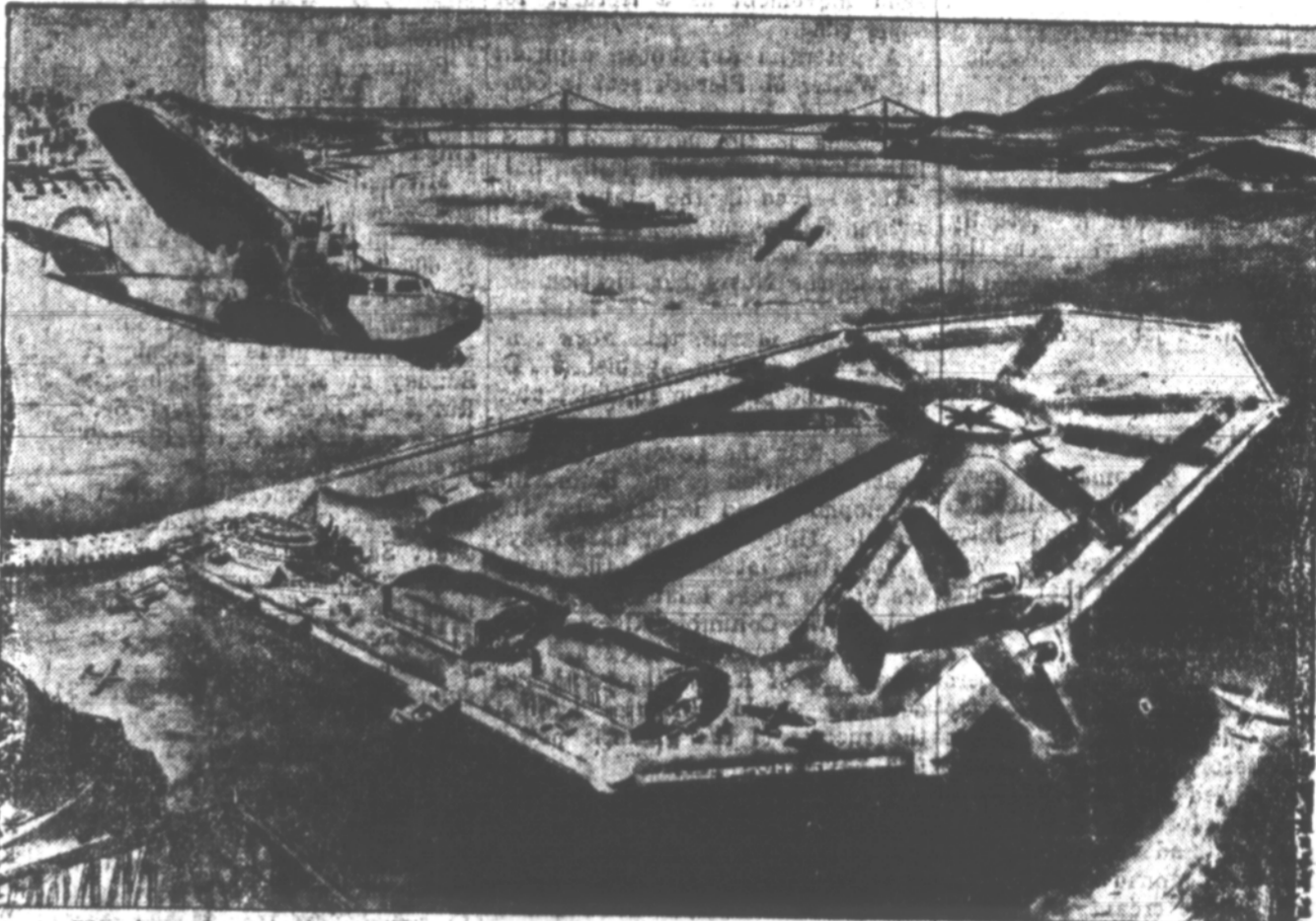
The committee was created on the initiative of the State Grange which named three members, the State Federation of Labor complying with the request of the Grange to name three members. The committee consists of Morton Tompkins, Dayton; Senator W. A. Johnson, Grants Pass; and J. L. Davis, Kent, representing the Grange, and Phil Brady, Paul E. Gurske and Kelly Lee, all of Portland, representing labor.

BOARD OF EQUALIZATION MEETING

Notice: There will be a meeting of the County Board of Equalization of Sherman County, Oregon, at the Court House, Moro, Oregon, on the second Monday in August, that being the 9th day of August, 1937, to publicly examine the Assessment Rolls, correct all errors in valuation, descriptions of lands or other property assessed by me, and it shall be the duty of persons interested to appear at the time and place appointed (appearance is by petition). All petitions must be made IN WRITING and verified by the oath of the applicant and filed with the board WITHIN FIFTEEN DAYS from the time it is by law required to meet.

Margaret W. Peetz, County Assessor.

## DREAM AIRPORT—RAISED FROM BOTTOM OF SEA



First official sketch of how San Francisco's new "downtown" metropolitan airport will appear after the close of the 1939 Golden Gate International Exposition. Treasure Island, shown here, is the geographical center of the San Francisco Bay metropolitan area. It will be the site of the World's Fair in 1939 and after the close of the Exposition, will become one of the country's major airports. In the background may be seen Alcatraz Island, American "Devil's Isle"; the Golden Gate Bridge, and at left, a glimpse of the San Francisco skyline. Sketched by Artist Ken Sawyer.

## Kent Service Station Robbed Of Machines

Thieves broke into the service station at Kent Sunday night, by breaking out a panel of the back door and unfastening the lock. Stolen were slot machine which was later dropped on the highway and broken, and stolen was a pinball machine. Loot consisted of the nickels in them. Cigarettes and beer were also taken. Sheriff Wilson examined the place Monday but no clues leading immediately to the capture of the culprits were found.

## Clubbers To Again Go To Portland

Hopeful of winning the trip to the Pacific International Livestock Exposition this fall sponsored by The First National Bank of Portland, 4-H Club members in Sherman county are completing special projects and preparing entries for county and 4-H fair competition. Choice of a boy and girl from every county in Oregon will be based on outstanding leadership and achievement in club work. Judges will be the county agent, county superintendent of schools and The First National Bank branch manager. In counties not served by the Portland bank's branch system, other local banks will cooperate in selecting a third member of the judging committee. The three day visit in Portland during the October livestock exposition will include daily trips to the show grounds and entertainment by the host bank, which will pay transportation and all other expenses of the 4-H Club members.

## Morning Glory May Like Chemicals

Mr. Jenkins and Tom Caldwell, assistant county agents at large, were here Tuesday to look over the weed plots being tested in this county. A new weed, recently imported from California, named Blue Flowering Lettuce was found on the Charles Bullard ranch. It is a perennial and so far very difficult to kill according to Mr. Jenkins.

## Tomato Growers Fear Surplus

Medford, Ore., Aug. 5.—Oregon tomato growers today joined other western farmers seeking chain store aid in meeting a surplus crop crisis.

Earl T. Newbry, Medford, was named to head a seven-man growers' stabilization committee organized in the famous Rogue River tomato growing district.

"The growers of canning tomatoes in the extreme west are faced with a serious situation since there is at present about twice the normal carry-over of canned tomatoes in the hands of canners and distributors," said Newbry.

Newbry pointed out that the surplus of Oregon tomatoes was not acute in itself, but that the market for Oregon tomatoes was affected by conditions in the industry as a whole.

## Court Holds Quiet Session Over August Business

Relief Committee Talks of Community Troubles

County court meeting of Wednesday was a quiet affair with little on the docket to excite the most nervous citizen.

In the forenoon a meeting of the relief committee was held with a discussion of the many details of giving or withholding relief or pensions therefor. Rules and regulations prevent the giving of money to many who apply.

## Most Land Now Under Contract

Seventy one per cent of Oregon's total crop acreage was represented in work sheets under the 1936 agricultural conservation program, while 93 per cent is represented in work sheets this year, according to a statistical summary issued by N. C. Donaldson, secretary of the state committee. Nationally, there was 67 per cent of the total crop land in the United States actually covered by application for grants under the 1936 program, the annual report of R. H. Tolley, administrator, shows.

Oregon had 14,209 actual applications for grants among approximately three million such applications in the country as a whole. The national report shows that soil building practices were carried out on approximately 53 million acres of land during 1936, exclusive of western range practices.

The program is described in Administrator Tolley's report as "designed to conserve and improve the productivity of the nation's farm land by encouraging shifts from soil depleting to soil conserving crops," and by the use of sound soil building practices. The extent to which such changes were effected in Oregon is shown in the statistical summary issued by Donaldson.

In Oregon, for example, more than 40,000 acres of new seedings of perennial nonirrigated grasses were made, of which 23,000 were in eastern Oregon and 17,000 in western Oregon. In western Oregon alone more than 51,000 acres were seeded to non-irrigated alfalfa and red clover. East of the mountains trashy summer fallow methods were carried out on approximately 111,000 acres. In the state as a whole the shift from soil depleting crops amounted to 13.5 per cent among those participating in the program.

## Calves Grow Rapidly For 4-H Clubbers

The thirty one calves being fed by 4-H club children in Sherman county made a gain of approximately 100 pounds each during the past month according to LeRoy Wright, county agent, who has just finished the monthly weighing.

Highest gain for July was made by Jack von Borstel with a gain of 3.51 pounds per day. Second was David Richelderfer's Hereford that gained 3.36 pounds. Bobby King's Angus gained 3.33 pounds and his Hereford 3.27 pounds. Clyde Fridley's Angus gained 3.2 pounds per day and Leland Barnett's Hereford put on 3.1.

A prize of \$5 will be given by the county agent at the fair for the person, not acquainted with the calves, who guesses the closest on the weights of the calves shown.

## Recruits Prefer Hawaii Service

Major H. D. Bagnall, the Army Recruiting Officer, announced today that the past month was the biggest July on record as far as enlistments were concerned, a total of 114 young men being successful in gaining admittance to the ranks of the Regular Army.

For the second consecutive month, Hawaiian Service was the most popular with the new Army men, 62 or almost 65 percent elected to serve in Hawaii, Major Bagnall said.

The Major pointed out that young men selecting Hawaiian Service are sent without delay to this beautiful little group of islands in the mid-Pacific and returned to the mainland after two years and reassigned on the West Coast for the third and final year of service before discharge.

## Grass Sown With Alfalfa Now

Most people are disturbed to find grass creeping into their alfalfa fields, but on the Union branch experiment station they are going as far as to deliberately seed some grasses with alfalfa. The reason is that when bare spots appear in ordinary alfalfa fields the tendency is for cheat grass, which is worse than nothing, to creep in, lowering the value of the hay. By seeding a certain amount of good grass with the alfalfa, it is believed that weed grasses will be kept out. The fairway type of crested wheat grass is proving best for this purpose so far.

## Harvest Yields Higher Than Expected Earlier

Federation Making As Much As 17 Sacks, Winter Wheat From 9 to 12; South End of County Not Yet Ready

Yields of wheat from Sherman county farms are better than was anticipated before harvest started. This is especially true of the district north of Nigger ridge. Harvesting is not general south of that point but early reports are that yields there will be smaller, than hoped for a week or so ago.

Winter wheat in the center and north end of the county are from ten sacks to fourteen sacks and the yield of spring grain has been reported to be from twelve sacks to seventeen sacks. Many of the higher yields are well substantiated by accurate acreages and weights. Sacks are weighing heavy in the north end of the county and 145 pounds is a usual weight per sack.

Around Moro the wheat is about as high yielding as farther north for ten sacks of winter wheat and up to sixteen and seventeen sacks of Federation are often reported.

The only field of winter wheat that has been harvested south of Nigger ridge is reported to be making about eight sacks. Spring grain is said to be seriously damaged in places and owners have despaired of getting much from it. Five or six sacks will be a good yield in fields that made their growth after the June rain where the hot weather interfered with proper ripening.

Because of the higher than anticipated yield of grain in the larger part of the county it is probable that the county will produce more bushels of wheat than last year. Yields are spotted but the general tendency is as indicated above.

## Petition For Weed District Signed

The petition for the formation of a weed control district to control morning glory and eradicate Russian knap weed and white top is being signed by farmers as their attention is called to it. Citizens of town are also signing as the proposed district includes the city of Moro. White top is making headway in town and nearby farmers are anxious to have it stopped before it spreads to their fields and becomes as unmanageable as morning glory.

## Recruits Prefer Hawaii Service

Major H. D. Bagnall, the Army Recruiting Officer, announced today that the past month was the biggest July on record as far as enlistments were concerned, a total of 114 young men being successful in gaining admittance to the ranks of the Regular Army.

For the second consecutive month, Hawaiian Service was the most popular with the new Army men, 62 or almost 65 percent elected to serve in Hawaii, Major Bagnall said.

The Major pointed out that young men selecting Hawaiian Service are sent without delay to this beautiful little group of islands in the mid-Pacific and returned to the mainland after two years and reassigned on the West Coast for the third and final year of service before discharge.

## Grass Sown With Alfalfa Now

Most people are disturbed to find grass creeping into their alfalfa fields, but on the Union branch experiment station they are going as far as to deliberately seed some grasses with alfalfa. The reason is that when bare spots appear in ordinary alfalfa fields the tendency is for cheat grass, which is worse than nothing, to creep in, lowering the value of the hay. By seeding a certain amount of good grass with the alfalfa, it is believed that weed grasses will be kept out. The fairway type of crested wheat grass is proving best for this purpose so far.