

Sherman County Journal

Forty Eighth Year No. 39

Moro, Oregon, Friday, July 31, 1936

Official County Paper

State Affairs

By
A. L. Lindbeck

Except for an occasional picnic and pep rally to keep up the morale of the partisans, politics can be expected to take a recess for the remainder of the summer. The public is in no mood to listen to the arguments of office seekers during the dog days of July and August and the wise candidate will conserve his energies until the voter is more receptive to his offerings after the end of the vacation season along about September 1.

This does not mean that the political medicine men are going to remain idle for the next six weeks. Not by a considerable. Here in Oregon the two major parties have just revamped their state organizations. Strategy boards are being selected and there will be plenty of behind the scenes action in preparation for the big push this fall when both the Republicans and Democrats go out to carry the state while the Townsends and the Union party adherents and the numerous independent aspirants do their best to cross up both of the big parties and gather the plums unto themselves.

And speaking of the reorganization of the state central committees there was a meed of surprise in both sessions. Claude McCulloch of Klamath Falls went into the Democratic race for state chairman as a dark horse although he polled 10 votes on the first ballot and received the benefit of the support of Fred Fisk and some of Floyd Bilyou's votes when it developed into a fight between Jack Caulfield of Tillamook county against the field. On the republican side of the picture efforts of Floyd Cook and his fellow "horsemen" to stop Arthur W. Prialux in his race for reelection failed when the Chiquin newspaperman went into the committee meeting with 19 of the 36 votes in his pocket, signed, sealed and delivered.

Dr. Ralph I. Shaddock, area manager of the Townsend organization, just returned from their national convention in Cleveland has let it be known that there will be a complete Townsend congressional and legislative ticket in Oregon. Nominees of the two major parties who are found to be sympathetic to the Townsend program will be given the endorsement of that organization. In districts where no Townsend sympathizer is on the ballot independent candidates will be placed in the field.

Reports drifting into Salem indicate that "Union" party petitions are being circulated in several counties with results that are very gratifying to the promoters of the new organization who expect to complete their petitions in time to qualify for a place on the November ballot. Socialists who are also active throughout the state will not attempt to qualify as a party but will bring their candidates out under the "independent" label.

The State Industrial Accident commission has just closed its biggest year, according to Albert Hunter, chairman, with receipts totaling more than \$4,000,000. The annual report of the commission shows \$6,632,771.56 set aside in the segregated fund to pay pensions to 3330 beneficiaries including 790 widows, more than 1000 orphans, 223 permanently and totally disabled workmen with 418 dependents and 899 partially disabled workmen. Although industrial activity covered by the workmen's compensation act was much greater last year than for 1928-29 accidents were greatly reduced and only 130 fatalities were reported as compared to 200 for the previous year.

In the opinion of the capitol reconstruction commission this week Attorney General Van Winkle held that there was nothing in the legislative act to prevent the construction of the new state house on the land adjoining the old capitol site and recently donated to the state by the city of Salem. The capitol reconstruction act provides that the new building shall be constructed on some portion of the premises "now" owned by the state. The attorney general holds that the adverb does not necessarily connote "at the present moment" but that it may mean "performance at a later date."

Life policies of the 2829 Oregon citizens in the Pacific Mutual Insurance company which collapsed last week are fully protected in the reorganized company, according to Hugh H. Earle, state insurance commissioner.

Banded Brown Eagle Found By Farmer

A brown eagle, with beak made for tearing and rending, and claws fitted for grasping and carrying, was killed the first of the week by Robert Rohde and sent in by Platt the mail carrier.

A band on the eagle's leg was marked, "1916 W. J. Young Goldendale" signifying that twenty years ago the eagle had been captured across the river and banded perhaps by curiosity. The band is of something that appears to be partly gold and a part of a bracelet. It was fastened with a plain copper rivet such as farmers use to patch harness back in 1916.

The story is that the eagle was perched on the lower limb of a tree when Rohde approached him and knocked him over with a stick. The bird had a wing spread of 77 inches, was at least 20 years old and perhaps was full of years and ready to quit this vale of tears.

Guy Pound, One-Time Resident Buried

Guy Pound, well known to most of Sherman county's citizens, died in The Dalles Monday evening from meningitis brought on by a sore throat he contracted while on a fishing trip a few weeks ago.

Mr. Pound came to Sherman county from Illinois when a child and lived in Wasco until he moved to The Dalles in 1925. He learned the jewelry trade and operated a store in Wasco. He would have been 51 years of age October 12.

He is survived by his widow, nee Bessie Marsh, one son, Marshall, a sister, Eva Shannon and his father J. A. Pound who lives in Raymond, Washington. The funeral was held Wednesday in The Dalles and was attended by many citizens of this county.

Oregon Counties May Receive Aid In Development

Planning Board Wants Survey Of States' Resources

Complete and detailed instructions for compiling, analyzing and studying data on which to base future plans for development of each Oregon county have been sent by the Oregon State planning board, it was reported here recently.

This phase of county planning is regarded as of utmost importance, not only to this county, but to the state as a whole. It is pointed out, with such information as a basis, workable projects can be outlined and many actually put into effect. The instruction bulletin, which was prepared by Sinclair A. Wilson, senior economist of the Pacific Northwest Forest Experiment station and chairman of the planning board's land classification and use committee, dwells particularly on information for the conservation and development of natural resources. It describes in detail steps to be taken in making a base map, land ownership and tax delinquency map, mineral resources map, and water resources map.

Cost May Be Cut

Special studies that may arise from the work include possibilities for economies in road and school costs, present industries and possibilities for industrial expansion, development of small and off-season industries, and other subjects.

The county base map should include such physical features as highways, cities and towns, railroads, power lines, telephone and telegraph lines, rivers and streams and dams and reservoirs on them, lakes, boundary lines, and others.

On the ownership map such information as government land, state land, privately owned lands, tax delinquent lands, county lands and others should be listed, the bulletin states.

The instruction bulletin gives a complete list of symbols to be used, and tells in detail how to prepare the maps and data for most efficient use. Copies of the bulletin may be obtained at the state planning office in Portland.

Quality Of Wheat Will Be Under Par

Federation Wheat Especially Is Low In Test Weight This Year; Yields Are Fairly Even Throughout Entire County

The quality of wheat produced in Sherman county this year will have a wide variation, even if the Turkey Red is taken alone. There is also no question but that there will be a still wider variation in the quality of the Federation, for some fields of the spring wheat will yield a very light grain that will be most suitable for feed.

Test weight of wheat tested so far run from over 60 pounds for good lots of wheat as low as 50 pounds for later wheat that did not mature properly. Not many expect a high protein content of any large percentage of the wheat although some of the first wheat tested showed a protein content of fifteen percent.

Some Already Done

Some men are already finishing their harvest but these are usually small operators who fortunately hired their crops cut first. Yields north of Wasco have been disappointing in a degree returning from one to three sacks less than anticipated. The wind is credited with the reduction.

Grain men are inclined to lessen the early estimates of the yield and some are convinced that there will be less than 2,000,000 bushels in the county.

All Fields Good

The distribution of the crop is more fortunate than last year for all parts of the county are getting a fair crop in point of quantity although the quality will be lacking in the southernmost part of the county.

Farms Without Soil Held Poss'ble

According to the government pamphlet, Rural Electrification, there is a possibility of raising farm produce without a farm. With electricity and a few pounds of chemicals to feed the plants a farmer, if that is what he would be called, could, or at least, has grown wonderful plants that produce many times the crops that normally come from their unfortunate brothers sown on ordinary soil.

Man Made Mountain Manufactured For Fair

Salem, July 27—Most people may think the lordly Mt. Hood is just south of the Columbia river near Portland, but when they get to the Diamond Jubilee Oregon State Fair here September 7 to 13 they will find Mt. Hood right on the fairgrounds.

Of course the state fair Mt. Hood will be a miniature and it will be the dominating feature in the landscaped creations for the Diamond Jubilee celebration.

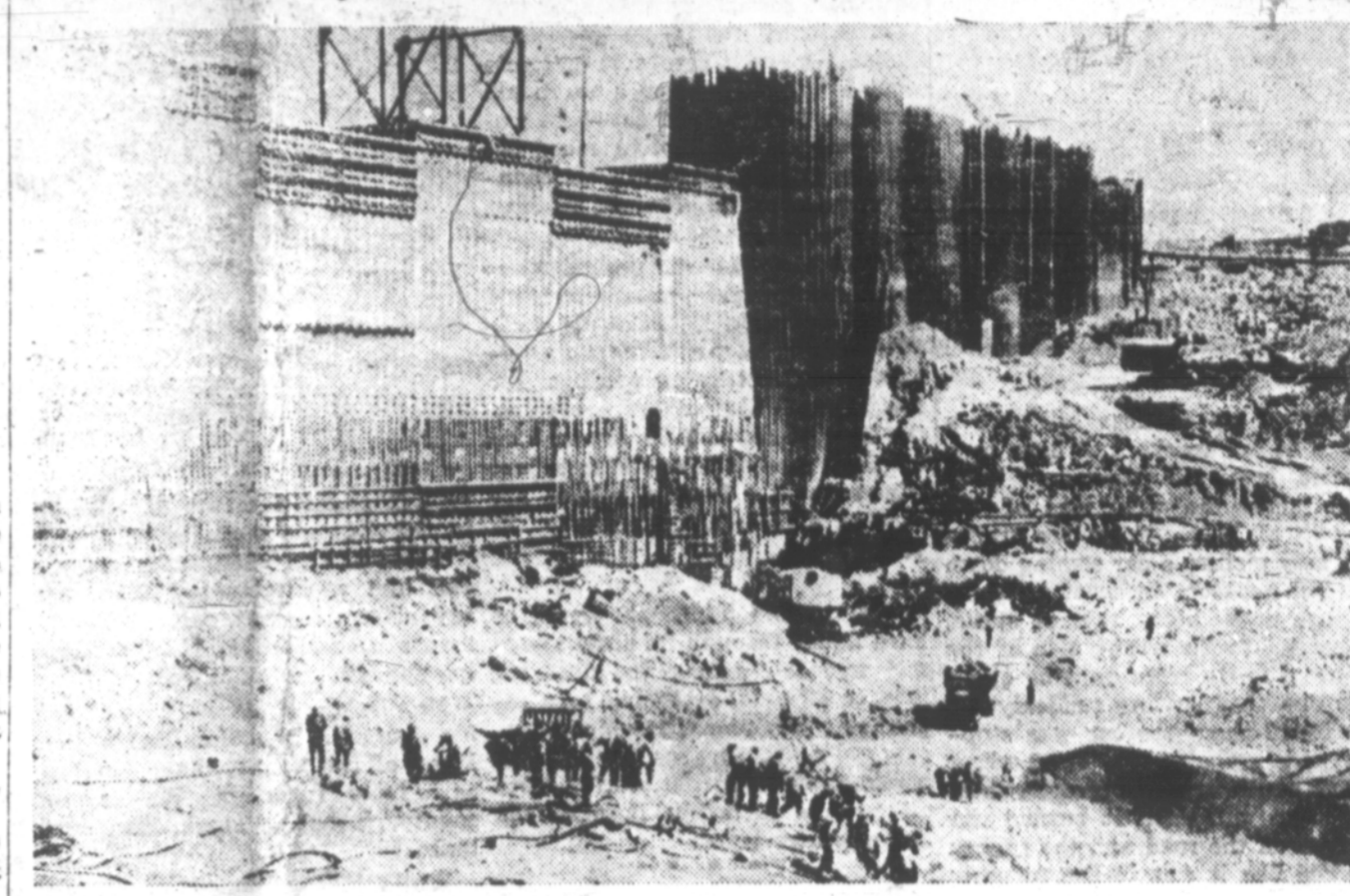
Ernest Iufer, landscape artist who received his training in Switzerland, is creating the replica of Mt. Hood and before he started building it he studied enough geological survey contour maps and photographs of the mountain to stock a small store.

His design will reproduce all sides of a five-mile area across Mt. Hood, starting about 250 feet above timberline cabin. All glaciers, streams and rivers that come off the glaciers will be reproduced and the mountain will be located faithful to its natural stand. The miniature Mt. Hood has a circular base with a 24-foot diameter and the peak will stand 70 inches above the sidewalk.

The replica, on which construction will take more than two weeks, is being built of concrete, with lime and white cement, rock and crystals to be used to give the naturalistic effect. Timber will be represented in moss. The scale used is about one inch to 8000 feet.

Overflow from the mountain creeks will run into a concealed trough and will water the two long beds of zinnias in that section of the fairgrounds.

Lay Foundations for Grand Coulee Dam



The foundations of the Grand Coulee dam on the Columbia river which will stretch 4,300 feet from cliff to cliff and rise 350 feet in height, on which an army of men are now at work.

Many Pounds Of Grass Seed To Be Sown

Three thousand pounds of Crested Wheat grass seed has already been distributed in Sherman county by Perry N. Johnston, county agent, and two thousand pounds more is being bought. The price for these purchases has been 36 cents per pound laid down. Orders are in for 5000 pounds of seed in addition to the quantities already ordered by farmers.

A hundred pounds of Poa Buddosa or winter blue grass has been ordered by Carrol Seays who will seed some of it along with other plantings of grass including Crested Wheat. This will be the first known planting on a large scale of other grasses than the wheat grass.

Federal Livestock Board Organized

The recent federal livestock feed agency established in Kansas City is intended to serve merely as a clearing house for information on feed and livestock, and will not actually buy and sell feed or livestock nor make loans, the extension service has been notified.

It will help farmers and livestock feeders in the drought area to locate surplus supplies of feed for purchase at the lowest cost, and will serve feed dealers, farmers and others who have surplus feed or forage for sale by listing such supplies available for shipment into drought areas.

The extension has no definite information as to what volume such exchanges will assume this year, and suggests that individuals or concerns interested communicate directly with E. O. Pollock, in charge of the federal livestock feeding agency, 755 Livestock Exchange Building, Kansas City, Missouri.

"Motorized" Snake Found Near Redmond

State Police Sergeant Art Tuck has permanent lift in his hair after talking with his sons, Jackie, 6, and Billy, 4, the other morning.

The boys had been playing along the edge of a canyon west of town. They told their daddy they had the best time with a snake, a nice, pretty one who wanted to play with them.

A few days before one of them had brought home a live bull snake held tight in one hand.

But this other snake got away, they lamented. They chased it and tried to catch it, but it crawled off into the rocks before they could get their hands on it.

"What kind of a snake was it?" asked Papa Tuck, smiling indulgently at such an innocent tale of childhood adventure.

"We don't know, Daddy," Billy confided. "but it had a swell motor in its tail."—Redmond Spokesman.

Neal Ruggles, son of Mr. and Mrs. Starr Ruggles of Turner, is here for the harvest season and is working for the Moro Grain Growers.

SC&DA Rules Changed Again By Government

Ruling Made For Eastern States Extended To West To Permit Greater Production Of Feed and Meat Products

Oregon farmers who are still in a position to plant late feed crops or who can still harvest nurse crops planted on acres diverted to soil conservation uses may profit by recent modification of the agricultural conservation program which has now been extended to the entire western region.

Extension officials at OSC who were notified of the change, are of the opinion that it will have little effect in Oregon because climatic conditions ordinarily make this too late for changes in cropping practices, but they are passing on the information for the benefit of any who might still be able to use it.

The modification originally applied only to designated drought counties in the middle west and south, but they were extended in order to encourage as high production of livestock feedstuffs throughout the region as possible. Under the rulings made, farmers may grow late forage crops such as Sudan grass, millets, spring grains and the like on diverted acreage, without changing its classification and endangering eligibility for soil conserving payments.

In a similar manner, farmers may harvest nurse crops planted with clover or other soil conserving crops on diverted acres which, under the original rulings, were to be clipped and left in or otherwise disposed of, instead of being harvested for hay. Because of the heavy reduction in livestock feedstuffs in the drought area proper, it was thought wise to liberalize the requirements in this respect and thus provide extra feed either for shipping into the drought area or for use of livestock shipped out.

STATION THRESHING

Threshing is going on at the experiment station and little sacks of wheat that represent the produce of one plot are being piled up in the warehouse to await careful weighing and cleaning to determine how much the wheat yield would be if an entire acre could be used. The rate and date of sowing and plowing plots have been threshed but yet computed. Highest production on these plots was 27 bushels per acre.

FEW SALES MADE

Although the price of wheat has been eighty cents or better there has been little selling on the part of the farmers of this county. This may partly be due to the fact that the quality will in many cases be below normal and farmers wish to sell after grade and quality is known. Prices quoted here Wednesday were 84 and 85 cents for white and red wheat respectively.

Case Settled After Two Days Of Trial

The case in equity between Skinner, state banking commissioner, and McQuillen and Barzee came to a sudden conclusion Tuesday when, after a day and a half of taking testimony, the contesting parties and the attorneys came to a settlement.

The case came out of a dispute between the Bank of Commerce of Wasco, being liquidated by H. M. Stephens and E. W. McQuillen and wife and his father in law and land lord, W. S. Barzee. Witnesses were the contesting parties, Lloyd Hennagin, R. H. McKean, George Updegraff and others who were familiar with facts of the case. The crop, which was in dispute, will be cut by the bank and divided, after certain expenses are paid, in a manner that represents a compromise.

Frank G. Dick represented the defendants and Fred Finaley, district attorney of Wheeler county, was attorney for the plaintiff, the bank.

Uncle Sam Wants Soil Mechanics

The United States Civil Service Commission has announced open competitive examinations for Soil Conservationists (Farm Planning) in the Soil Conservation Service, Department of Agriculture. Applications will be received until August 24, 1936.

The salaries range from \$2,600 to \$4,600 a year, less a retirement deduction of 3 1-2 per cent.

No Exams Needed

Competitors will not be required to report for examination at any place, but will be rated on their education and experience. They must have completed a full four-year course in agriculture leading to a bachelor's degree in a college and in addition, must have had certain experience.

Full information may be obtained from the Secretary of the United States Civil Service Board of Examiners at the post office or customhouse in any city which has a post office of the first or second class, or from the United States Civil Service Commission, Washington, D. C.

Board of Equalization Meeting

NOTICE. There will be a meeting of the County Board of Equalization of Sherman County, Oregon, at the Court House, Moro, Oregon, on the second Monday in August, that being the 10th day of August, 1936, to publicly examine the Assessment Rolls, correct all errors in valuation, descriptions of lands or other property assessed by me, and it shall be the duty of persons interested to appear at this time and place appointed (appearance is by petition.) All petitions must be made in writing and verified by the oath of the applicant and filed with the board within fifteen days from the time it is by law required to meet.

Margaret W. Peetz,
County Assessor
37-38-39-40

Fair Board Awaits Action On Racing Program

Fair Books Mailed To Farmers By Fair Board Secretary; Others Available at Drug Stores In County

Farmers of the county received a copy of the 1936 premium list this week and may begin to look the book over and decide what produce or what livestock, or what race horses they may want to exhibit for the date of entry this year is August 25 for all livestock classes.

An entry blank accompanied each book making it easier for the recipient to make out his entries. Within a few days a supply of the books will be left at the drug stores in the county so that all interested persons may obtain them.

Horse Entries Few

Entries have been slow coming in for the races. A certain hesitancy was expected considering the time of year but the fair board cannot wait long for the decision and will have to begin negotiations for outside horses unless local men fill the races within a very few days. A word or a post card is all that is required.

Livestock entries in the purebred classes must carry papers with them and all cattle entered must be tested for Bang's disease for, according to L. L. Taylor, it is a state law that cattle exhibited must be tested.

More Stock Hoped For

It is thought that the entry list this year will be larger in many of the classes than it was last year when 87 horses, 27 beef cattle, 21 dairy cattle, 30 sheep and 27 swine were entered in the various classes. While the horse classes were well filled the smaller stock classes were not as well filled as they might have been.

The pulling contest will probably be held Saturday morning. It has so far been impossible to obtain a dynamometer for use here and the original method of loading a sled with heavy material will be used to test the pulling teams.

New Sheep Class

This year there will be a farm sheep class which is expected to draw many entries as it will give an opportunity for farmers to exhibit their best sheep of grade or mixed blood and this is the most common kind of sheep on the farms now.

Judges Picked

Judges for the fair livestock will probably be Harry Lindgren of Oregon State college and D. E. Richards of the Union experiment station. Mr. Richards was here last year and found much to praise in Sherman county livestock. Hodgen-Brewster company will furnish the poultry judge.

McKean and Searcy have offered a summer school scholarship to the boy who does the best in the farm engineering class of 4-H club work.

Oregon Draws Many Sight Seers

Oregon is now a great recreational area in its own right rather than a state through which travelers must pass in order to reach vacation spots further north, according to E. B. McDaniel, president of the Oregon State Motor club touring counsellors throughout the state are finding a much different attitude on the part of visitors a change arguing well for state-wide prosperity.

The trend of tourists to remain in Oregon is due largely to the extensive program of travel development carried on by the motor club, the state highway department and the Evergreen Playground association.

"The non-resident is beginning to realize what a wonderful vacationland Oregon really is, and by spending their extra days here the annual tourist business, which already ranks with the largest of industries, will bring additional state wealth."