

Kent Citizen Injured By Fall In Garage

Youth Buried Friday From Church In Kent

J. M. Wilson, who had the misfortune to fall in a pit in the Schadewitz garage at Moro Saturday evening, was taken to The Dalles by his brother, I. E. Wilson to receive medical attention. Several stitches were necessary to close the gash on his forehead, and he will be confined to his bed for a few days.

George Wilcox of Grass Valley was a Kent Saturday selling insurance.

Superintendent W. W. Knighton of Moro visited the Kent school Monday.

Mr. and Mrs. G. W. Barnett of The Dalles were guests of Mr. and Mrs. J. L. Matthes Friday.

Mrs. Art Cratty, William Mitchell and Jerry Wilson jr. are on the sick list this week.

Dr. C. L. Foley of Moro was at Kent Sunday where he examined Evelyn and Luther Warren Davis and Lester Wilson for insurance policies.

Funeral services for Charles C. Wilson who passed away January 15, were held at the Kent Christian church Friday, January 17, with Rev. A. S. Bash of The Dalles and Rev. Adrian Sias of Dufur officiating, and the music was furnished by Mr. and Mrs. Neil McGlasson and Rev. Adrian Sias, accompanied by Miss Rebecca Overstreet at the piano.

Mrs. Betty Kelly who has been spending the past three months at Waverly, Washington, is visiting at her daughter's home here, Mrs. J. M. Wilson.

CARD OF THANKS

We wish to express our sincere thanks and appreciation to our many friends and relatives who were so kind to us during the recent illness and death of our dear son and brother, and for the beautiful floral offerings.

Mr. and Mrs. J. C. Wilson
Mrs. Dick Reckman jr.
Mrs. Clarice Sacre
Nellie Grace Wilson

Farm Tenantry In Oregon On Increase

A 44 per cent increase in the number of farm tenants in Oregon from 1930 to 1935 is indicated by the 1935 census of agriculture. During the same period the number of farm owners increased by only 16 percent according to a report on the status of farm tenantry being prepared by Walter A. Duffy, regional director, resettlement administration, Portland, Oregon.

With 22 percent of all farms in Oregon now operated by tenants, the extent of farm tenantry has reached a new high. In spite of the relatively recent opportunities for homesteaded land in this state there has been an almost steady increase in the number of tenant farms since the first county was taken in 1880.

Figures To Be Compiled

While final results of the census have not been tabulated for all states, figures for 39 states indicate an increase in the number of farm tenants in most sections of the country. Approximately 43 percent of all farms in the United States are now operated by tenants compared to 25 percent when the first census was taken in 1880.

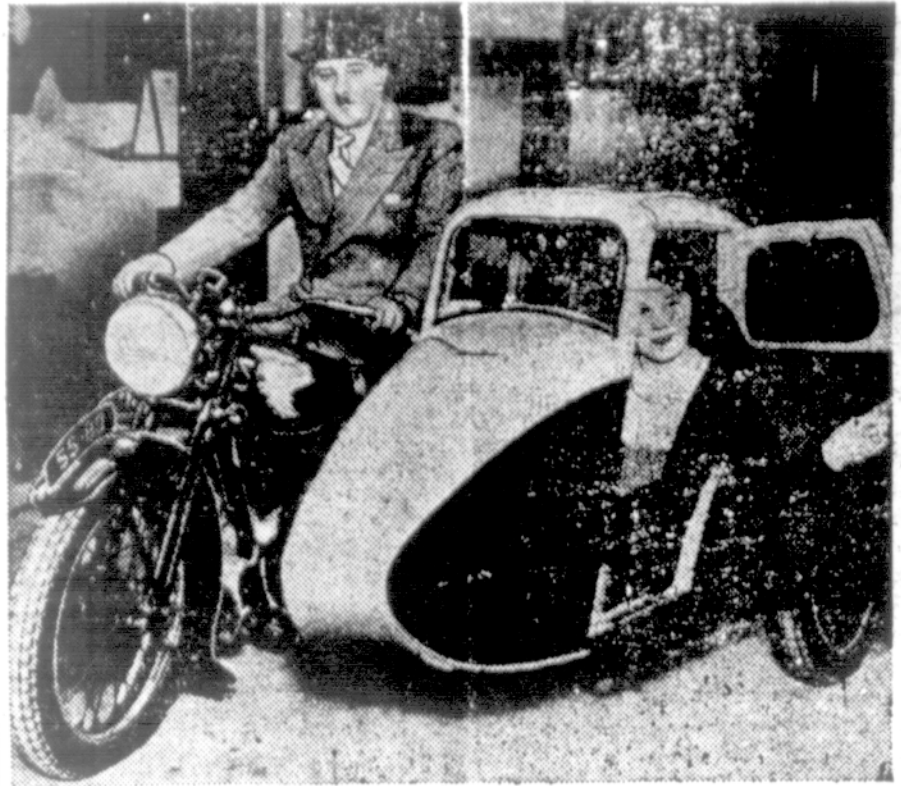
Attempts to check the growth of tenantry have been made chiefly because of the instability of residence associated with a farm tenantry system. Although conditions vary greatly, studies show that the tenant farmer moves on the average of every four years. Because of this change in residence the functioning of schools, churches and other community enterprises as cooperative organizations is badly handicapped.

Interest Lags

Impermanent interest in their land, prevent many tenant farmers from giving proper attention to soil conservation, checking of erosion and upkeep of farm buildings. The tenant hesitates to make improvements on the farm which would only profit his successor or the owner.

Farm tenantry in the past has been considered a stepping stone to farm ownership, and as a means whereby farmers lacking capital could obtain experience in farm management. The steady increase in the proportion of older tenants however, indicates that fewer men are now able to move up the last rung of the ladder to farm ownership.

Cockpit Devised for Motorcycles



Milady may now have the equivalent of a town car, or airplane cockpit, attached to the side of her motorcycle. The above machine, equipped with an enclosed and comfortable seat, was exhibited at Olympia, in London.

Four Killed On Oregon Grade Crossings In 1935

Four persons were killed and 24 injured in grade crossing accidents in Oregon during 1935 according to reports compiled by Frank C. McCulloch, state utilities commissioner. This compares most favorably with the record of 19 fatalities and 41 injuries in 96 crossing

accidents in 1934. In 47 of the accidents the victims beat the train to the crossing. In 33 of the accidents trains were already occupying the crossing when some motorists attempted to cross. In one case a motorist hit the seventh car on a long freight train. The crossing accidents were most frequent in winter months with 20 recorded in December, 16 in October and 14 in January.

HI-WAYS TO HEALTH by ADA R-MAYNE OREGON DAIRY COUNCIL

Too many of us have been educated to the chilled dessert served with whipped cream. We top a one crust pie with whipped cream, use whipped cream with gelatine desserts, and always serve puddings cold so that the cream won't melt. Most of our recipes read "remove from the oven, chill and serve with whipped cream."

But have you ever tried serving a pie or an apple turn-over fresh from the oven with plain cream? It will make a great hit with the men in the family, for almost any man prefers plain cream to whipped cream any day. You can fluff it up for the women but let the men have it plain.

Another masculine favorite is warm apple sauce served with cream. When piping hot gingerbread and a tall glass of ice cold milk accompanies it, you have an excellent night supper. Moreover this combination will call forth exclamations of delight and at the same time will prove entirely satisfactory to all members of the family, both adults and children.

And speaking of satisfactory food combinations, do you provide your family with a hot pudding for dessert occasionally? Being hot, whipped cream will be out of order and plain cream will come into its own. But once having tried it, you'll use it again and again. During the cold rainy season you will find hot pudding a welcome accessory to any luncheon or dinner and you will find it an amazingly simple dessert to prepare.

Lemon Pudding

One cup sugar
Three tablespoons butter
Juice and rind of one lemon
Four tablespoons flour
One cup milk
Two eggs
Mix sugar and flour thoroughly. Work in butter, lemon and beaten egg yolks. Add milk. Fold this mixture carefully into stiffly beaten egg whites. Turn into baking dish, set in shallow pan of water and bake in a moderate oven (350 deg.) for 30 minutes. Serves 6.

Chocolate Souffle

One cup milk
Two and a half squares of bitter chocolate cut in pieces
Three egg yolks, beaten
Two tablespoons butter
Three tablespoons flour
One third cup sugar
Three egg whites, beaten stiffly.
Put chocolate in top of double boiler and heat over boiling water until it melts. Add a little of the milk and stir, adding more milk gradually to make a smooth mixture. Melt butter in separate pan, add flour and blend. Add a little milk and stir to make smooth sauce. Combine white sauce with chocolate-milk and cook over double boiler until thick and smooth, stirring constantly. Remove from hot water and allow to cool slightly while beating eggs. Beat the egg yolks, add the sugar a little at a time. Combine with the hot chocolate sauce by pouring the hot sauce over the eggs. Stir well, and fold in the beaten egg whites. Turn into well greased baking dish and bake in moderate oven (350 deg.) for 30 to 35 minutes. Serves 8.

No Automobile Deaths In Sherman County This Year

Motor Club Official Praises Sherman County Motorists

Although several counties in Oregon reported heavy increases in number of deaths caused by automobile accidents, Sherman county reduced its traffic toll from 3 in 1934 to none in 1935, according to a statement received from W. R. McDonald, director of the Oregon State Motor association in charge of safety.

This improved record, he said, has been an important factor in giving Oregon national recognition as a leader in street and highway safety. Based on latest figures Oregon ranks second in the country among states which have shown outstanding reductions in motor deaths.

"Every motorist in Sherman county deserves the commendation of safety leaders for entering into the spirit of the 'Let's Quit Killing' program and making an effort to eliminate serious accidents," the motor club official said. "A reduction of this sort offers a vast amount of impetus to safety work."

"It is encouraging to note that this reduction was made in spite of the fact that much of the driving in this county is over comparatively straight and open road, where motorists are tempted to speed and where the most serious accidents usually occur."

McDonald said that any decrease in number of traffic fatalities last year was doubly significant in view of a nation wide increase. In Oregon, he pointed out, motorists were apparently becoming more intelligent in the operation of their machines, while in many other states drivers have not yet become "safety conscious."

"Since the Oregon State Motor association inaugurated its program of safety in September, 1934, motorists in this area have been cooperative. Records indicate quite definitely that they have responded to our request that they drive more thoughtfully, that they take time to be safe."

"We have now entered upon a

new year, and it is only reasonable to believe that these motorists will continue to drive intelligently - continue to improve their driving habits. It is not too much to expect a record-breaking reduction in traffic deaths during 1936."

Davis—Did you have any luck on your hunting trip?

Randall—I'll say I did. I shot 17 ducks.

Davis—Were they wild?

Randall—No, but the farmer who owned them was.

Civil Service Examinations Announced

The United States Civil Service Commission has announced competitive examinations as follows: Assistant animal fiber technologist, \$2,600 a year, assistant animal husbandman (sheep breeding), \$2,600 a year, Bureau of Animal Industry, Department of Agriculture.

Chief industrial economist, \$6,500 a year, National Labor Relations Board.

Certain specified education and experience are required for these positions.

All States except Colorado: Iowa, Maryland, Minnesota, Vermont, Virginia and the District of Columbia have received less than their quota of appointments in this apportioned departmental service in Washington, D. C.

Try Journal advertising, it pays.

Keep Yourself Informed of the news in SHERMAN COUNTY

For the small sum of \$1.50 per year we furnish authentic information on the Agricultural news, Experiment station discoveries, CCC and Erosion work, Taxation matters, and many other subjects that are vital to the welfare of every citizen of SHERMAN COUNTY

You can't afford to be uninformed

Knowledge is Power

Information is often cash

Subscribe NOW to the SHERMAN COUNTY JOURNAL



Bank-By-Mail Service

Here is a convenience for those who cannot make frequent calls at the bank. It brings our services to your door, so to speak. Write or call about our Bank-by-Mail system. In the meantime, don't hesitate to tell us what your problems may be. We'll try to help you solve them.

C. R. Harding Manager
L. A. Littleton Ass't Manager

Resources Over 100 Millions

The Dalles Branch of the United States National Bank of Portland
Head Office: Portland, Oregon