

**Sherman County Journal**

SHERMAN COUNTY OBSERVER, Established Nov. 2, 1888  
GRASS VALLEY JOURNAL, Established Oct. 14, 1897  
CONSOLIDATED, MARCH 6, 1931  
WASCO NEWS-ENTERPRISE, Established 1891  
CONSOLIDATED MARCH 4, 1932.

Published Every Friday at Moro, Oregon, By  
**GILES L. FRENCH** Managing Editor



Entered as second-class matter at the postoffice, at Moro, Oregon, under Act of Congress of March 3, 1879.

SUBSCRIPTION RATES—PAYABLE IN ADVANCE.

One Year ..... \$1.50  
Six Months ..... 1.00

FRIDAY, DECEMBER 15, 1933.

**WE ARE PLEASED**

The meeting is over. The visitors have dropped from our midst as quietly and as quickly as they came. Moro and those who aided the committees from outside the town can feel pleased that visitors uniformly declared the homecoming session of the wheat league one of the most successful in its history.

A minor acquaintance with conventions of various kinds leads the Journal to believe that wheat league meetings are superior in several points over the average of its class. Usually there is an abundance of information available on all subjects under discussion. There are always competent men present to present all phases of every question. And always there has been definite recommendations a part of which are carried through to successful action each year. The wheat league is not an organization that meets, resolves and goes home to forget.

It should be gratifying to the county that it was host to a group that has had, and will undoubtedly have in the future, a considerable influence in the industry and in state policies and every man who took part in the meeting should be pleased with the ability displayed in handling the many problems that face wheat growers and as citizens.

**IN WHICH WE ARE THANKFUL**

We are used to complaints about winter lingering overlong in the lap of spring. We rave at the weather man for such evidence of affection and we curse cold April days with fervor when this happens.

For a month we have observed another phenomenon. Autumn has lingered long in the lap of winter. A week from now we will be living through the shortest day of the year and will be ready for another period of lengthening days and still the days are balmy and the nights hardly demand an overcoat. Just how long this is to continue we do not know. Winter may churlishly push Autumn onto the floor at any time and go stamping out to leave the doors open for the entrance of an east wind and a blizzard.

It is remarkable, though, and we don't want it thought we are unappreciative, that growing weather has lasted up until the middle of December. The grass and volunteer wheat has been fine for stock; the moisture we have had has been the best possible for late seeded wheat and the unreasonably warm sunshine has had a wonderful effect on the coal pile.

If this should turn out to be one of those winters we occasionally have when there is little actually cold weather it will have been well timed. Feed was not too plentiful and since the freeze out of last December farmers are fearful of cold snaps. We could stand a pleasant winter with occasional rains—say three times a week—and we are still hoping that the weather man will not see fit to make us rue our enjoyable autumn.

There is no better time than the present for these farmers who expect to need credit next spring to begin organization of a production credit association. There was discussion during the wheat league about the advisability of organizing by counties. It seems probable that cheaper management would be the result if each county was a unit by itself. Travel expense would be less, appraisals would be more quickly done and the manager could be more conversant with the affairs of the association. These managers will be paid a percentage of the loans in any event so the size of the unit would make no difference in this respect.

It appears that we are going back to the old drinking man's theory: "What's the use of being poor, when you can be rich for \$1.50?" If every body gets to feeling rich we will be through the depression temporarily at least.

It is likely that property owners will again refuse to accept aid from non-property owners and help vote down the sales tax. There's nothing like being satisfied.

The next group the government will need to help will be the bootleggers. When liquor comes down there's going to be great unemployment among them.

Whether the legislature pleased the majority or not, they did finish their allotted task in the time set and that's something.

We presume that no one has mistaken cheese week for personal publicity.

**Grass Valley**

Mr. and Mrs. Sorahan have moved to town and Mr. Sorahan will work on the CWA project here.

Sam Davis was in Portland last week end with a truck load of live stock.

Miss Phyllis Rinehart is home again from Portland, recovered from her illness and again in charge of her school room.

Mrs. L. C. Dickson entertained a group of friends at bridge last Friday afternoon at her home.

The Perry family of Cosdon visited friends here Sunday. They lived here before moving to the Ghilham county town.

Mrs. Paulie Wilcox was hostess to the bridge club Wednesday afternoon.

Mrs. A. Dillinger, owner of the brick store building occupied by J. H. Wilt & Co. and Arch Fortner, was here this week on business.

Charles Garhammer is digging a well on the ranch occupied by Klaus Bardenhagen east of town.

The Womens club gave a card party for their husbands Thursday night at the Masonic hall.

Mrs. Theodore von Borstel underwent an operation in St. Vincent's hospital Thursday of last week and is reported to be recovering as well as can be expected.

Harry Pinkerton and Perry Johnston of the allotment office in Moro were here Tuesday and with the members of the allotment committee managed the signing of contracts for crop reduction. All but two men signed on that day.

Work has begun on the roof of the school building under the auspices of the CWA.

**Kent News**

Mr. and Mrs. Carl Schadewitz went to The Dalles Saturday morning where Mrs. Schadewitz entered Mid-Columbia hospital for an operation, which was performed that day. Reports are that she is getting along nicely.

Mr. and Mrs. John K. Wilson were shopping in The Dalles Thursday.

The high school play 'Tea for Tom' given here Saturday night was well attended.

Mrs. Viola Smith of Monmouth is visiting her parents Mr. and Mrs. Gus Schilling.

Mrs. C. F. Guyton has been enjoying a visit from three of her sisters from the East, one of whom she had not seen for 25 years.

Mr. and Mrs. Jacob Crocker of Goldendale, Wn., are spending a few days at the home of Mr. and Mrs. J. L. Davis.

A number of Kent farmers attended the wheat league meeting at Moro Friday and Saturday, and all farmers were notified to meet at the grange hall Tuesday, December 12, to sign their allotment contracts.

J. C. and Mrs. Wilson and daughter Nellie and Mr. and Mrs. Dick Reckman were dinner guests at the J. H. Wilson home Sunday.

Complimenting Arnold Dellinger his twenty first birthday, Mrs. Dellinger entertained with a party at her home Wednesday evening also a six o'clock dinner, covers being laid for 11 guests. They were Kermit Culp and Winifred Vogel from The Dalles; Gayle Amidon of Moro, Jimmie Reese, Mr. and Mrs. Paul Stout and son Kenneth of Shaniko; Matilda Holt of Redmond, and Harley McKay Alta Norton, Carl Fluemke and Charles Dunlap of Kent. Arnold was the recipient of a number of gifts.

Orval, Harold and Melba Thogerson of Moro attended the high school play here Saturday night, also a party at the Sather home.

Miss Dorothy Schmidt of Redmond is visiting with Miss Matilda Holt at the von Borstel home.

Marjorie MacInnes went to Redmond Saturday to attend a Baptist Sunday school rally.

J. H. and Mrs. Wilson were at Moro shopping Friday, and attending the wheat league meeting.

Kermit Culp of The Dalles was a week end visitor at the Norton home.

Mr. and Mrs. L. Sather entertained about thirty five young people Saturday night, Cards, games and dancing were the diversion of the evening. Refreshments were served by the hostess later in the evening.

Sunday evening about six o'clock the report was phoned into Kent that the farm home of R. P. Barnett was on fire. Several residents of Kent motored out to help fight the fire, but found it to be the wood shed which was filled with wood and the wintery supply of flour, all a total loss. It was thought the small children were striking matches while looking about for their dog.

**KENT SCHOOL NOTES**  
Margaret Dunlap, Editor.

The boys basket ball team was defeated in an interesting game Friday night at Wapinitia. The final score was 49-32. At the half our boys were ahead 20-16 but in the third quarter Wapinitia surged ahead to a lead that they held throughout the remainder of the game.

Both the girls and the boys teams will meet Wapinitia on the Kent floor this Friday night, the 15th. This is the girls' first game this season and the boys first on the home floor. Two exciting games are anticipated. Come and support the team.

Charles Dunlap was elected captain of the boys team for the second consecutive year.

**WHEAT ALLOTMENT**

Continued from page 2.  
HOLMES; Wm. S., Holmes 1810 A. Allot. 4240 bu. Max. 310 A.  
KEE; EBEN W., E. O. L. Co 1280 A. Allot. 3037 bu. Max. 370 A.  
KEE; EBEN W., Kee place 320 A. Allot. 1483 bu. Max. 85 A.  
KING; GLEN P., O. P. King farm 1510 A. Allot. 6455 bu. Max. 446 A.  
KOCK; ALFRED and CLARA H., Kock farm 480 A. Allot. 1095 bu. Max. 138 A.  
LAFFOON; C. O. Payne 1360 A. Allot. 865 bu. Max. 259 A.  
LEBLEU; R. E., E. O. L. Co. 929 A. Allot. 1488 bu. Max. 189 A.  
LEBLEU; R. E., Lemmon 960 A. Allot. 2351 bu. Max. 479 A.  
LEMLEY; ARZELL S., 784 A. Allot. 2195 bu. Max. 220 A.  
LEMLEY; CHAS. 1917 A. Allot. 3318 bu. Max. 471 A.  
LEONARD; ALLEN E., Bermingham 120 A. Allot. 58 bu. Max. 85 A.  
LEONARD; ALLEN E., Leonard 160 A. Allot. 422 bu. Max. none.  
MARTIN; JENNIE and BERNARD, Payne 320 A. Allot. 327 bu. Max. 69 A.  
J. MARTIN; JENNIE and BERNARD, 960 A. Allot. 636 bu. Max. 162 A.  
MAY; WALLACE L., 485 A. Allot. 1818 bu. Max. 147 A.  
McKEE BROS., Moore 640 A. Allot. 2204 bu. Max. 204 A.  
McKEE BROS., Morrissy 640 A. Allot. 947 bu. Max. 177 A.  
McKEE BROS., Wiggins 640 A. Allot. 1768 bu. Max. 192 A.  
MOORE; BUD, Essinger 160 A. Allot. 479 bu. Max. 95 A.  
MOORE; BUD, Guthrie 1000 A. Allot. 3488 bu. Max. 348 A.  
MOORE; BUD, Hill 480 A. Allot. 1757 bu. Max. 76 A.

NOYSE; A. S., 1080 A. Allot. 1685 bu. Max. 297 A.  
OLDS; DELL E. O. L. Co. 640 A. Allot. 912 bu. Max. 153 A.  
OLDS; DELL, Coon 160 A. Allot. 627 bu. Max. 99 A.  
OLDS; DELL and MARY ELLEN, King 1192 A. Allot. 1837 bu. Max. 95 A.  
OLDS; L. A., Brisbane 320 A. Allot. 397 bu. Max. 138 A.  
OLDS; L. A., 640 A. Allot. 1100 bu. Max. none.  
OLDS; L. A., E. O. L. Co. 483 A. Allot. 1324 bu. Max. 314 A.  
OLDS; L. A., Olds farm 320 A. Allot. 765 bu. Max. 75 A.  
OLDS; L. A., E. O. L. Co. 320 A. Allot. 684 bu. Max. none.  
OLDS; L. A., King 160 A. Allot. 320 bu. Max. 75 A.  
PAYNE; B. F., Barnett 546 A. Allot. 1830 bu. Max. 157 A.  
PAYNE; B. F., Williams 80 A. Allot. 50 bu. Max. none.  
PAYNE; B. F., Whittier 100 A. Allot. 329 bu. Max. 94 A.  
PETERS; H., Peters farm 917 A. Allot. 2646 bu. Max. 319 A.  
PETERS; H., E. O. L. Co. 564 A. Allot. 673 bu. Max. 126 A.  
PETERS; J. A., Schwarz farm 640 A. Allot. 2016 bu. Max. 238 A.  
RECKMAN; D., 1040 A. Allot. 1044 bu. Max. 200 A.  
REYNOLDS; DEAN L., 800 A. Allot. 2132 bu. Max. 187 A.  
ROLFE; T. M., 640 A. Allot. 1222 bu. Max. 180 A.  
ROLFE; T. M., Schenck 1237 A. Allot. 3721 bu. Max. 425 A.  
RUGGLES; OSCAR N., 2640 A. Allot. 643 bu. Max. 99 A.  
RUSSELL; ARCH L., 1240 A. Allot. 3035 bu. Max. 338 A.  
SCHADEWITZ; VIRGIL, 820 A. Allot. 1510 bu. Max. 247 A.  
SCHILLING; A. W., 400 A. Allot. 984 bu. Max. 102 A.  
SCHILLING; ROY G., E. O. L. Co. 156 A. Allot. 598 bu. Max. 102 A.  
SCHILLING; ROY G., Coon 480 A. Allot. 1652 bu. Max. 75 A.  
SCHILLING; W. C., 1120 A. Allot. 1554 bu. Max. 222 A.  
SCHILLING; W. F., 1280 A. Allot. 3763 bu. Max. 397 A.  
SEARCY; CHESTER A., 960 A.

Allot. 2627 bu. Max. 264 A.  
SHIPLEY; VERNON E., E. O. L. Co. 425 A. Allot. 1318 bu. Max. 156 A.  
SHIPLEY; VERNON E., Schenck 475 A. Allot. 1697 bu. Max. 163 A.  
SMITH; CLYDE, Ramsey 160 A. Allot. 528 bu. Max. none.  
SMITH; CLYDE, 480 A. Allot. 1186 bu. Max. 346 A.  
SMITH; L. K., 1920 A. Allot. 6293 bu. Max. 690 A.  
STARK; S. L., S. W. Scarey 80 A. Allot. 32 bu. Max. none.  
STARK; S. L., Lemmon 1577 A. Allot. 3425 bu. Max. 410 A.  
STRADLEY; FRED L., 640 A. Allot. 2087 bu. Max. 231 A.  
STHADLEY; FRED L., Bennett 320 A. Allot. 1059 bu. Max. none.  
TILLER; ROY E., 800 A. Allot. 1225 bu. Max. 179 A.  
TILLER; ROY E., Schwartz 160 A. Allot. 117 bu. Max. 48 A.  
TODD; W. C., Lytle tract 1120 A. Allot. 2817 bu. Max. 412 A.  
TODD; W. C., Strong 160 A. Allot. 231 bu. Max. none.  
TODD; W. C., 320 A. Allot. 105 bu. Max. 32.5 A.  
VINTIN; D. E., Baker 437 A. Allot. 1103 bu. Max. 180 A.  
VINTIN; D. E., G. Vintin 160 A.

Allot. 293 bu. Max. none.  
VINTIN; EUGENE 640 A. Allot. 1278 bu. Max. 156 A.  
WILCOX; GEO. H., 640 A. Allot. 1515 bu. Max. 187 A.  
WILCOX; GEO. H., E. O. L. Co. 320 A. Allot. 278 bu. Max. none.  
WILCOX; GEO. H., Long Estate 160 A. Allot. 210 bu. Max. 60 A.

**KENT**

**KENT POST OFFICE**  
Community Committee  
J. L. Davis, chairman; C. B. Andrews; W. K. Haggerty

ADAMS; JAMES B., Moon quarter 147 A. Allot. 426 bu. Max. 87 1/2 A.  
AMICK; L. W., 2280 A. Allot. 2263 bu. Max. 336 A.  
ANDREWS & PATJENS 1280 A. Allot. 3891 bu. Max. 344 A.  
BARNETT; GEORGE L., Hall 610 A. Allot. 2078 bu. Max. 200 A.  
BARNETT; ROY P., 2080 A. Allot. 6242 bu. Max. 479 A.  
BIBBY; Mrs. A. J., 1120 A. Allot. 1527 bu. Max. 191 A.  
BORSTEL; AMANDUS von, Sack-en 2591 A. Allot. 3247 bu. Max. 321 A.  
BORSTEL; FRANK von., 1170 A.

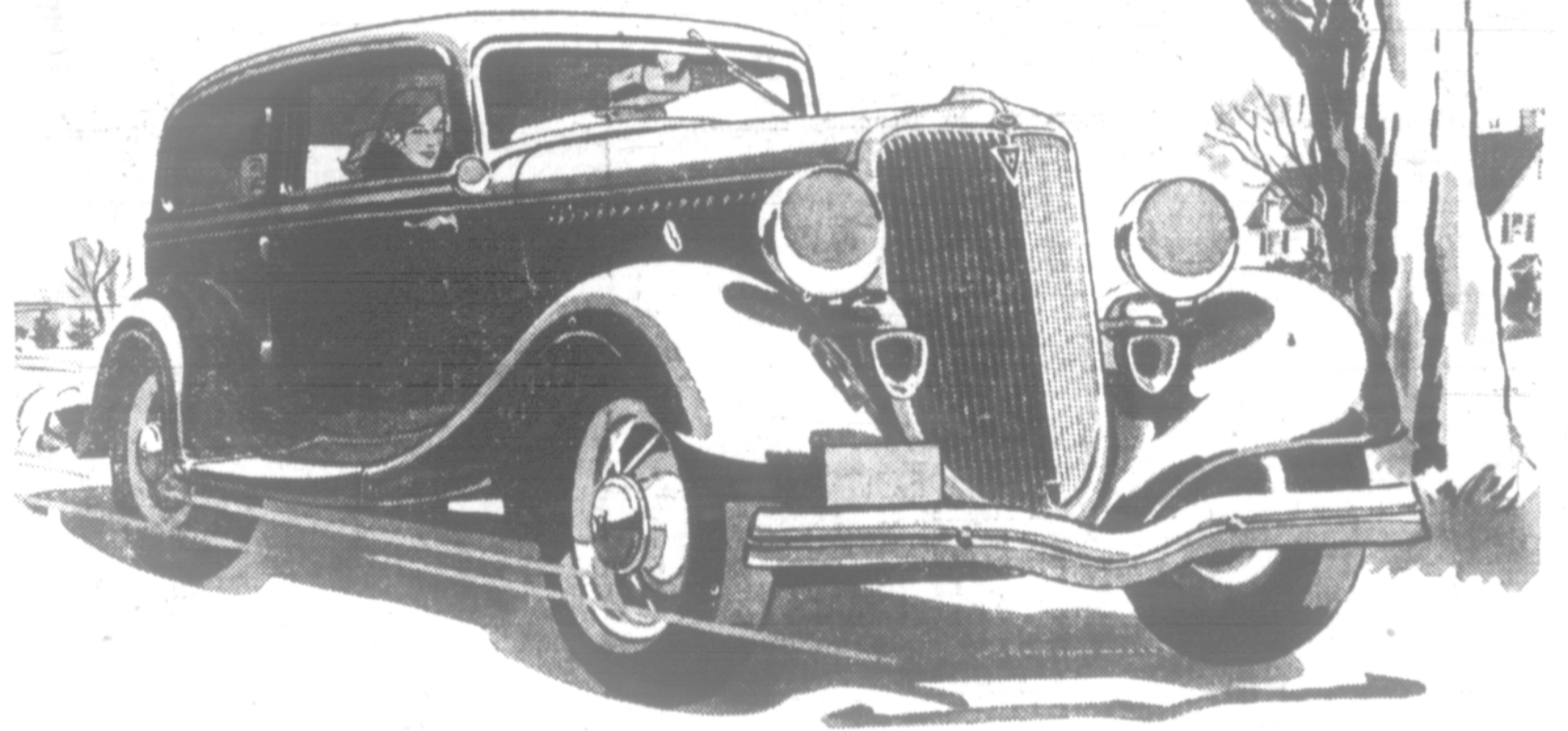
Continued to page four.

**Dependable Merchandise**

Our large stock of Dry Goods and Clothing is an opportunity for our customers.

**H. Zeigler's Quality Store**  
**Grass Valley :: Oregon**

**Announcing**



**NEW FORD V-8 for 1934**

THE UNIVERSAL CAR

The New Ford V-8 for 1934 is now on display at the showrooms of Ford dealers. Surpassing even the great Ford of 1933 in economy, beauty and comfort, it is truly the car of this modern age—the culmination of thirty years Ford progress. It combines the proved performance of the V-8 cylinder engine with two important new features—Dual Carburetion and perfected Clear-vision Ventilation. See this car today and drive it at the first opportunity.

**OUTSTANDING IMPROVEMENTS IN THE NEW FORD V-8**

**BETTER PERFORMANCE.** Greater power, new speed, quicker acceleration, smoother performance, more miles per gallon especially at higher speeds, and quicker starting in cold weather—all these result from the new dual carburetor and dual intake manifold. New water-line thermostats enable the engine to warm up more quickly and to maintain an efficient operating temperature. Added engine refinements reduce oil consumption, further improve operating economy and reduce maintenance costs.

**NEW VENTILATION SYSTEM** permits clear vision, prevents drafts and provides desired amount of fresh air in any weather. Individual control for front and rear side windows. When ventilation is desired the window glass is raised to the top. Then the handle is given an additional half-turn. This slides the glass back horizontally to form a narrow slot. Through this slot air is drawn out by the forward motion of the car. This simple ventilation system maintains draft-free circulation, insures passenger comfort, prevents fogging windshield in cold or stormy weather. Both windshield and cowl ventilator can be opened to supply additional air needed for comfortable warm-weather driving.

**DISTINCTIVE NEW APPEARANCE** enhanced by the newly designed chromium-plated radiator shell and grille, new hood louvers, new hub caps. Interiors are attractive, with new tufted upholstery, new mouldings, new cove-type headlining, new instrument panel, new arm rests, new hardware. Swivel-type sun visors in De Luxe bodies prevent glare from front or side.

**FENDERS IN COLOR.** On De Luxe cars fenders are in color to harmonize with body colors—wheel colors optional. New enamel finish on all bodies and fenders has greater wearing quality and more enduring luster.

**GREATER RIDING COMFORT** results from increased spring flexibility. The spring leaves are newly designed for quieter and easier action. Shock absorbers are improved. Seat cushions are deeper, with new, softer springs. New type, individual bucket seats provide increased comfort for front-seat passengers in the Tudor Sedan. Adding to comfort is the new driving ease of the 15-to-1 steering gear ratio.

**PRICES REMAIN LOW—Tudor Sedan, \$335. Coupe, \$315. Fordor Sedan, \$385. De Luxe Tudor, \$375. De Luxe Fordor, \$625. De Luxe Coupe (5 windows), \$555. De Luxe Coupe (3 windows), \$535. De Luxe Roadster, \$525. De Luxe Phaeton, \$530. Cabriolet, \$590. Victoria, \$610. (All prices f. o. b. Detroit.)**