

E. & W. Chandler The Different Store

Annual White Sale Starts Saturday, Feb. 9th

All of our WHITE GOODS for
your inspection and approval

This is going to be a "White Season"

We will show in White
Gaberdines, Mana Fabrics, Cover Leaf Fabrics, Lawns
Long Cloths, Nainsooks, Pique, Gallella
Sheets, Pillow Cases, Sheetings, Pillow Tubing
Towels and Toweling
Undermuslins, Corset Covers, Hosiery in Silk and Lisle
Silk and Lawn Waists

Come in and look the stock over
A pleasure to show the goods

MONEY TO LOAN ON

Farm Land

Eight per cent Interest
Long Time
No Extra Charges

If you desire a loan call and we'll
talk the proposition over

C. E. THORP, Richland

Parker's Movies TO-NIGHT

New Bridge on Friday night

Don't Fail to Come

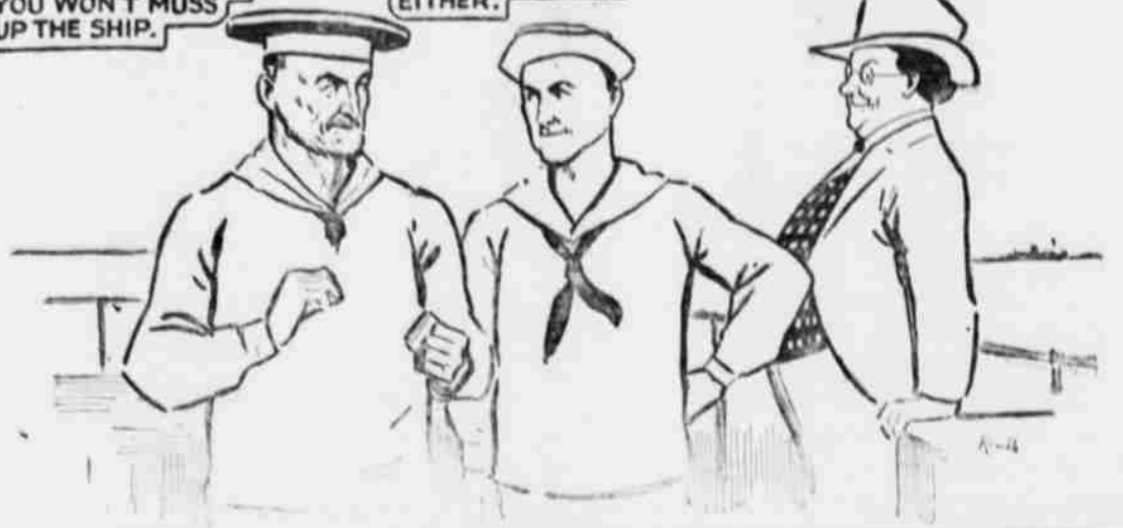
Admission: Adults 25c; Children 15c

THE OLD SAILOR AND THE RECRUIT

ON SHIPBOARD YOU
GOT TO BE NEAT!
CHEW W-B CUT AND
YOU WON'T MUSS
UP THE SHIP.

AND THEN YOU DON'T
MUSS UP YOUR FACE
WITH A BIG WAD,
EITHER.

THAT'S THE IDEA-A
SATISFYING AND
CLEAN CHEW!



LOCATED AT LAST

Dade City, Fla., Jan. 16, '18.
Editor News: I find this country
about as I expected—sandy, but
lots of good land, especially the
low-lands; the high-land with a
clay sub-soil is also good. The
"old timers" do nothing to im-
prove the country or themselves.

This is a pretty town, of 1900
population, paved streets shaded
with oak trees. The winter has
been the coldest for 19 years, as
the papers and people state, but
I have not had more than two
light frosts on my bed so far and
it is not very cold. It is raining
today, the third time since I came
here on Dec. 15th. Where left
on trees the fruit is somewhat
damaged. I have bought a ten-
acre tract, on a hard road, 1 1-4
miles west of town on the north
bank of a beautiful lake. Have
a small house and 2 1-2 acres all
cleared; cost \$400; will move out
to it in a few days. Come over
Sunday and bring the family;
we'll go out and get some fish
then get a mess of quail and
squirrels—all of which are pretty
good chewing. Grain is worth
from 3 to 5c; chickens 22c a lb;
"razor-back" hogs 12 1-2 just as
they come out of the woods, never
had a bite of grain and wouldn't
know what it was; don't know
what beef is worth. Labor is not
so high as up north. White labor
about \$2 a day. A man that will
work can do well here at cutting
wood; timber is not large and \$1
per acre is paid.

Regards to all,
P. F. McLain,
Box 112 Dade City, Fla.

A Hint to the Aged

If people past sixty years of age could
be persuaded to go to bed as soon as they
take cold and remain in bed for one or
two days, they would recover more quick-
ly, especially if they take Chamberlain's
Cough Remedy. There would also be less
danger of the cold being followed by any
of the more serious diseases.

HASTENED RUSSIAN COLLAPSE

"We must not overlook the fact that
Russia collapsed, not because of the
Germans on her borders, but because
she failed to organize and feed her
own citizenship," the food administra-
tion announced.

"We must be warned that if we are to
emerge victorious from this war we can-
not risk the collapse of another of our
associates in this war from this cause.

"Anybody that is looking for the col-
lapse of the German people on the food
question had better turn around and
look at the moon, because the results
will be the same. Germany is in no
more danger of collapsing on that
score than we are, if as much."

M.D. FLEMING Optometrist

Will be at Richland Hotel

Saturday and Sunday
Feb. 9 and 10

If your eyes need attention don't
fail to call on him

Cattle Raisers Hold Meeting

The members of the Eagle Valley
Cattle Raisers' Association met in an
informal session in a private dining
room, at the Richland Hotel, Richland,
ordered by the president, E. E.
Holman. Meeting called to order
and minutes of last meeting read
and approved after several errors
were corrected.

The first in order was the sign-
ing of an application for a drive-
way and driftway for the stock
to enter and come from the Re-
serve. An application was also
made and signed for a plat of
ground to be used as a "cut-out"
tract.

Dan V. Gover, who rode for the
Association the past season and
gave the best of satisfaction, was
hired to ride the coming season.

It was voted to amend the Con-
stitution and elect two more
members on the Advisory Board,
the Richland Foreman E. A. Benn-
hoff to be one of them. Mr. Chas.
Evans was elected as the other
member. The Advisory Board
will consist of five members in-
stead of three.

A motion was made and second-
ed that each man shall have a
vote for every 50 head of cattle
and in case he owns less than 50
head he shall have a vote also.
Motion carried.

A membership fee of \$25 was
voted for each one joining the
Association hereafter.

The Secretary was authorized
to levy an assessment to pay all
bills.

After much discussion on other
important matters of business,
owing to lack of time other busi-
ness was laid on the shelf to be
taken up some future time.

L. C. Holman,
Sec'y and Treas.

Have you tried "Otter" brand
canned asparagus; it's delicious,
Raley's.—ad

For Rent: the Cobb ranch above
New Bridge. Call at News office
for terms and other particulars.

FLYNN & Co BRANDS OF CIGARS ARE DISTINCTLY NORTHWEST Products

THE WAGES THE FACTORY PROFITS
THE FACTORY EXPENSES WILL
STAY IN THE NORTHWEST TO HELP
PAY YOUR WAGES. BUY
YOUR PRODUCTS. PAY
YOUR TAXES. CIRCULATE
AGAIN! AGAIN WHEN
YOU CALL FOR A

LA CHEERABLE OR A

TRIUMPH OR A

NUGGET OR A 54

La Cheerable SMOKER

ONE OF THESE BRANDS
WILL SURELY SATISFY YOUR
INDIVIDUAL TASTE. FOR
THEY ARE MADE OF THE
FINEST TOBACCO
OBTAINABLE BY AMERICAN
WHITE CIGAR MAKERS IN
FLYNN & CO. CLEAN
SANITARY CIGAR
FACTORY BAKER ORE

CALL FOR BIDS

We, the undersigned, members of the
Advisory Board of the Eagle Valley
Cattle & Horse Raisers' Association, do
hereby advertise for bids to make sev-
enty-five (75) salt troughs to be used on
the Eagle Valley Cattle & Horse Range
No. 1 of the Minam National Forest.

Troughs to be hewn in logs cut from
green pine trees; each trough to be 14
inches wide, 10 inches deep and 16 feet
long; to be placed in position at the salt
licks, upon blocks raising the log at least
five (5) inches from the ground.

All bids to be in writing, sealed, and
either mailed or handed to W. Lovel
Gover, Richland, Oregon.

All bids to be opened by the Advisory
Board on February 28, 1918. A right to
reject any or all bids is reserved.

Signed: E. E. Holman, Chairman.
W. Lovel Gover, Secretary.

Paid adv—13-45

Did you borrow this paper?
Why not subscribe for it?
Only \$1.50 the whole year