

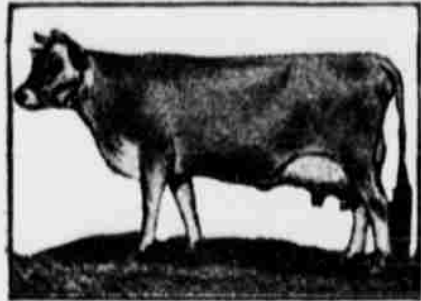
## PRODUCTION OF DAIRY

### Output of Five Breeds Given in Farmers' Bulletin.

Comparison Made of Ayrshire, Brown Swiss, Guernsey, Holstein and Jersey—Holstein is Given Largest Average.

The average production of five dairy breeds most generally known in the United States is shown in Farmers' Bulletin No. 893 of the department of agriculture.

For Ayrshire the average of the 2,508 cows that have completed yearly records for advanced registry is 9,555 pounds of milk testing 3.95 per cent of butterfat, amounting to 377.51 pounds of fat. The ten highest milk producers of this breed range from 25,320 to 18,745 pounds of milk and the average of these ten highest pro-



Champion Jersey.

ducers is 21,538.8 pounds of milk. The ten highest butterfat producers among Ayrshires range from 955.56 to 744.73 pounds, with an average, for these ten, of 855.4 pounds of butterfat.

#### Brown Swiss Records.

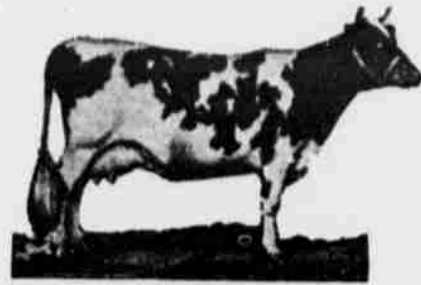
In the Brown Swiss breed the average of 199 cows that have completed yearly records for the registry production is 10,868.7 pounds of milk, testing 3.96 per cent, amounting to 433.45 pounds of butterfat. The ten highest milk producers of the breed range from 19,460.6 to 10,496.7 pounds of milk with an average, for these ten, of 17,372.2 pounds. The ten highest butterfat producers of the Brown Swiss range from 798.16 to 647.80 pounds, with an average for these ten of 683.72 pounds of butterfat.

#### Guernsey Records.

In the Guernsey the average of 6,200 cows that have completed a year's record for advanced registry is 8,934.33 pounds of milk, testing 4.90 per cent, amounting to 446.01 pounds of butterfat. The ten highest producers of this breed range from 24,008 to 17,297.51 pounds of milk with an average, for these ten, of 19,337.0 pounds of milk. The ten highest Guernsey butterfat producers range from 1,098.18 to 910.67 pounds, an average for these ten of 978.75 pounds of butterfat.

#### Holstein Records.

Among Holsteins, 3,229 cows that had completed a yearly record for advanced registry averaged 14,622.7



High Producing Guernsey.

pounds of milk, testing 3.424 per cent butterfat, amounting to 500.7 pounds of fat. The ten highest producers of this breed averaged from 31,246.9 to 28,826.4 pounds of milk, an average for these ten of 29,898.34 pounds of milk. The ten highest Holstein butterfat producers averaged from 1,205.00 to 1,017.28 pounds, an average for these ten of 1,060.89 pounds of butterfat.

#### Jersey Records.

In the Jersey breed, the average of 5,244 cows that had completed yearly

records for the registry of merit was 7,792 pounds of milk, testing 5.35 per cent, making 417 pounds of butterfat. The ten highest milk producers ranged from 19,694.8 to 16,633.2 pounds, at average, for these ten, of 17,703.4 pounds of milk. The ten highest butterfat producers range from 999.1 to 875.2 pounds, an average for these ten, of 943.1 pounds of butterfat.

## FREEZES HELPFUL TO SOILS

### Aid Pulverize Broken Ground, Cause Particles to Crumble and Vegetable Matter to Break.

There is considerable advantage in severe freezes during winter. While cold weather makes expenses some what heavier unless the farmstead is well arranged for comfort, both for man and animals, the soil is always benefited by freezes.

Farmers readily recognize that after hard freezes the soil is in better condition. Freezes help pulverize broken ground; they cause the particles to crumble, vegetable matter to disintegrate and break down. There is also considerable check to the increase of insects. Many insects in the pupa stage are killed by very cold weather and this means less increase the following spring and summer. However there are some that stand very low temperatures without injury.

The best way to get the full benefits of winter snows and winter freezes is to have the land broken.

## LEGHORN IS POPULAR BREED

### Best Example of Nonsitting Class and Most Widely Bred of Any European Fowl.

The Leghorn is probably the best example of the nonsitting class. It is certainly the most popular and the most widely bred of any European fowl. Other egg breeds include the Minorcas, Anconas, Andalusians, Campines and Spanish, all Mediterranean



White Leghorn Cockerel.

breeds. To these should be added the Hamburg, Houdan, the Redcap, and possibly some others.

The most common varieties of Leghorns are white, brown, buff, black and silver, and some of these color varieties are again subdivided into single and rose-comb species. The White and Brown Leghorns, are the most widely bred, and they were the first varieties known.

## MANY WASTE SPOTS ON FARM

### Some of These May Be on Fields That Wash, Are Poorly Drained or Over-flooded—Other Items.

Look for the waste places on the farm. Some of these may be on fields that wash; some may be on the over-flooded fields; some the poorly drained places. The barnyard manure may be wasting, the implements being left out in the weather to deteriorate. The waste may be in trying to do with the hands what should be done with the implements and machines. Look for wasted energy and wasted opportunity.

## USEFUL FOR WINTER MULCH

### Leaves Are Not Only Serviceable When Placed About Plants, But Also Good for Litter.

Save the leaves. They are useful for winter mulch about garden plants, for poultry to scratch in and, when piled and rotted down, make a good fertilizer for the garden. It is worth while to save them if possible.

## PROTEIN REQUIRED BY PIGS

### Feed Necessary for Bone, Muscle, Frame, Material, Etc.—Skim Milk is Recommended.

After the pigs are weaned they may lose flesh or at least make gains very slowly unless fed a feed rich in protein, to make bone, muscle, frame material, mineral matter, etc. If fed skim milk and grain they will not disappoint you.

### Ship Stock to Market.

The most economical way of shipping stock to market is in carload lots.

## Families in England That Have Long Records in the Service of Their Country

The town clerk of Henley-on-Thames has had the name of Cooper since 1777. Whether it has always been a case of son following father is not clear, but the law firm of Cooper has always during that period supplied the town clerk, London Tit-Bits remarks.

Everybody knows that the name of Buller is one to conjure with in Devon, but not everybody knows that a Buller has been a "governor"—whatever that may be—of Crediton cathedral church for upward of 20 years without a break.

Everybody at Hitchins knows the Hobbs family. They are the perennial postmen of the place. Their great-grandfather carried the letters long before penny postage was dreamed of and the letter-carrying business has been done by a Hobbs ever since.

Parliament can supply a few such records. When the son of Lord Derby put up for a division of Liverpool it was said that it seemed to be taken for granted that when the heir of Knowsley became of age Liverpool should send him to parliament—and it did.

It was said that the Newdigates, with but slight breaks, have sat for a division of Warwickshire since 1360. Quite recently F. A. Newdigate resigned his seat to become governor of Tasmania. He is the eighteenth Newdigate of one family—and there are others—who has been an M. P.

## Mother's Cook Book.

One thing that made the bread that mother used to make so good, was the appetite the boys had.

**Good Things for the Boys.**  
It takes a good deal of food to fill an ordinary growing boy, and he needs it for he is building a framework, at the same time using food to supply heat and energy for his daily activities. An active boy will digest hearty food for he burns up a large amount in play and work.

**Spiced Beef.**  
Take five pounds or more, depending upon the size of the family, of beef from the rump. Trim away the meat and cut slits several inches from the edge in which to pack the stuffing, made by using suet, crumbs and various herbs which are enjoyed, pepper, salt and a grating of nutmeg or a pinch of mace. After stuffing, rub the meat all over with salt, pepper, cloves, allspice, then wet with vinegar. Let stand over night. In the morning put into a kettle with a cupful of water and cook slowly (very) for several hours, allowing a half hour for every pound of meat, turn it often while cooking so that the gravy will season all parts of the meat. Serve hot or sliced cold. Thicken the gravy and serve with the meat.

**Apple Pancakes.**  
Rub to a cream a tablespoonful each of sweet fat and sugar, add two beaten eggs, one and a half cupfuls of flour sifted with a teaspoonful of baking powder and a cupful of chopped apples. Flavor with nutmeg or cinnamon and add milk to make a medium batter. Fry as ordinary griddle cakes and serve in an overlapping row around the platter of roast pork or sausage.

**Apple Dowdy.**  
Rub an earthenware dish well with shortening and line with slices of bread, also spread with a butter substitute, then fill the dish with sliced apples, sprinkle with brown sugar and a little nutmeg, turn in half a cupful each of hot water and molasses, then cover with slices of buttered bread, buttered side up. Cover the dish for the first hour of baking then uncover and bake for another hour. Serve from the baking dish, with powdered sugar and cream for a sauce.

## Nellie Maxwell

### IRISH PEASANT SONG

I knead and I spin, but my life is low  
The while,  
Oh, I long to be alone, and walk abroad  
A mile,  
Yet if I walk alone, and think of nought  
At all,  
Why, from me that's young should the  
wild tears fall?

The shower-stricken earth, the earth-colored  
streams,  
They breathe on me awake, and moan to  
me in dreams,  
And yonder ivy fondling the broken castle  
wall,  
It pulls upon my heart till the wild tears  
fall.

The cabin door looks down a furze lighted  
hill,  
And far as Leighlin Cross the fields are  
green and still;  
But once I hear the blackbird in Leighlin's  
hedges call,  
The foolishness is on me, and the wild  
tears fall.

—Louise Imogene Guiney.

## STATE NEWS IN BRIEF.

No less than three firms and individuals are now securing options on land supposed to be oil-bearing in Coos county.

The Springfield Mill & Elevator company resumed business Wednesday and began grinding flour and feed after a shut-down of six months.

Upper Hood River valley residents express the fear that a water shortage will prevail this summer unless heavy snows occur in the mountains before the winter is over.

Governor Withycombe stated Wednesday that he had ordered about 50 more guards from the Portland militia to be used for patrol duty on public and private property in Portland during the coming week.

Reports from three architects on the estimated cost of completing the new courthouse at Klamath Falls were made public at a meeting of the County court recently. The estimates range from \$120,000 to \$280,000.

Cattle thieves have been operating in Lane county on a wholesale scale, according to an announcement by Sheriff J. C. Parker, who will offer a reward of \$500 for information leading to the arrest and conviction of the rustlers.

The dwelling occupied by Dr. L. L. Hoy, of Tillamook, together with its contents, was destroyed by fire Wednesday afternoon. The fire ignited from a stove in the sitting room and spread rapidly. The contents were insured in the sum of \$3000.

Twin brothers, who look so much alike that the members of the board could not tell them apart, appeared before the Albany exemption board of Linn county in the physical examination of draft registrants Wednesday. The twins are Wilfred Cochran and Willard Cochran, of Holley.

The boys and girls of Grants Pass will strive to make the city the first city in the state to become wholly organized as Junior Red Cross auxiliaries. The East School was the first school in the state to be organized and now the Fourth Ward and the Junior High scholars have all signed the pledge.

According to a communication received by the State Highway commission from Chester L. Chambers, of the Eagle Creek grange, in Clackamas county, the Farmers' Union intends to attack further sale of road bonds through an initiative vote at the election in the fall and to annul the vote of last spring, by which the highway bonds were provided.

About 100 fathers of Yamhill county boys in the service of their country met at the court house in McMinnville Saturday and formed an organization under the name of Fathers of Soldiers and Sailors of Yamhill County. Frank Holmes was elected president and George Shirely, secretary. Vice presidents are to be appointed for each of the other towns of the county.

According to the statement of Engineer Clark A. La Barge, of Warren Bros., contractors, of Boston, Mass., with headquarters at Portland, who was at Toledo Thursday, there is a probability that his firm will build a standard-gauge railroad from South Beach, across the bay from Newport, to Waldport, on Alsea bay, a distance of about 124 miles, to the 1000-acre tract of spruce belonging to the Blodgett Timber company.

Tum-a-Lum Lumber company managers and their wives from different points in Central Oregon are attending the annual meet of the company, at Walla Walla.

The Hood River city council has appointed Mrs. Edna C. Henderson, city treasurer, to succeed her husband, Captain L. A. Henderson, Engineers' Reserve corps, now at Camp Lewis.

Car shortage on the lines of the Southern Pacific company in Oregon Thursday totaled 579, a shortage of 289 closed and 290 open cars. The S. P. & S. reported a shortage of 190 cars.

Advertisements for bids on \$500,000 worth of the \$6,000,000 State road bond issue were sent to Eastern bond papers Tuesday by G. Ed Ross, auditor of the commission. The commission may sell \$2,000,000 worth of bonds this year under the act, but whether the balance of the bonds will be sold or not remains to be seen.

Henry Bacher, a painter who has lived at Grants Pass for many years, was arrested this week by Sheriff Lewis, accused of seditious utterances.

The town of Halfway is lighted with new electric street lights, the first having been turned on Saturday evening. The power is supplied by the Payette Power company from its Ox-Bow power plant on the Snake river. A power line runs on from Halfway to Cornucopia to furnish power to the mines.

## War Recipes

Cut out the following recipes and paste them in your cook book to help you Hooverize. They have been thoroughly tested by instructors and special lecturers in the department of economics at the University of Washington.

### Hooverized Recipes for Shellfish.

**Cream of Clam Soup**—1 c minced clams, 1 c strained clam broth, 3 c milk, 3 tb oil or chicken fat, 4 tb flour, pepper, paprika. If fresh clams are used, no salt is required. If canned clams are used, add  $\frac{1}{2}$  ts salt. Melt fat, stirring in flour, and blend thoroughly. Add milk, slowly, stirring constantly until mixture thickens. Add the clams, reheat. Serve at once.

**Escalloped Clams.**—1 can minced clams or 1 c chopped fresh clams,  $\frac{1}{2}$  c clam liquor,  $\frac{1}{2}$  c milk, 2 tb cooking oil or chicken fat, 2 tb flour, 1 tb minced onions,  $\frac{1}{2}$  ts celery salt, 1-3 ts salt (omit if fresh clams are used), pepper, paprika,  $\frac{1}{2}$  c bread or cracker crumbs,  $\frac{1}{2}$  c buttered crumbs. Cook the onion in the fat for two minutes. Add flour and blend. Stir in the clam liquor and milk. When sauce thickens, add the clams and seasonings. Fill ramekins with alternate layers of fish and cracker crumbs and let brown in the oven. May be covered with crust, and baked as a pie.

**Deviled Crab**—1 c crab meat, 2 tb Weason oil, 3 tb flour, 2-3 c milk, 1 egg yolk,  $\frac{1}{2}$  ts salt,  $\frac{1}{2}$  ts celery salt, 2 tb tomato catsup, 1 tb grated onion, paprika, cayenne,  $\frac{1}{2}$  c buttered crumbs. Make white sauce of fat, flour and milk. Add crab meat and seasonings. When cool add slightly beaten yolk. Place mixture in ramekins or in baking shells. Cover with crumbs and brown in oven.

**Escalloped Crab**—1 c crab meat, 2 tb oil or chicken fat, 3 tb cornstarch, 2-3 c milk,  $\frac{1}{2}$  ts salt, pepper, 1 tb minced onion, paprika. Place alternate layers of crab meat and white sauce in baking dish. Cover with buttered crumbs and brown in oven.

**Crab Salad**—1 c crab meat,  $\frac{1}{2}$  c celery finely cut, 1 pimiento finely chopped, 1-3 c mayonnaise, lettuce leaves. Mix flaked crab meat and celery together, and moisten with mayonnaise. Serve on crisp lettuce leaves. The crab may be molded in small cups before turning out on plates.

## NORTHWEST MARKET REPORT

**Wheat**—Bulk basis for No. 1 grade: Hard White—Bluestem, Early Bart, Allen, Galgalus, Martin Amber, \$2.05. Soft White—Palouse bluestem, forty-fold, white valley, Gold Coin, White Russian, \$2.03. White club—Little club, Jenkins club, white hybrids, Sonora, \$2.01. Red Walls—Red Russian, red hybrids, Jones five, Coppel, \$1.98. No. 2 grade, 3c less. No. 3 grade 6c less. Other grades handled by sample.

**Flour**—Patents, \$10. Millfeed—Net mill prices, car lots: Bran, \$30 per ton; shorts, \$32 per ton; middlings, \$39; mixed cars and less than carloads, 50c more; rolled barley, \$63@65 rolled oats, \$66.

**Butter**—Cubes, extras, 50c; prime firsts, 49c. Jobbing prices: Prints, extras, 52@53c; cartons, 1c extra; butterfat, No. 1, 56@57c delivered.

**Eggs**—Ranch, current receipts, 51c; candled, 53c; selects, 55c per dozen.

**Poultry**—Hens, 23@23c; springs, 26; broilers, 29@30c; geese, 16@18c; turkeys, live, 20@25c; dressed, choice, 33c.

**Veal**—Fancy, 18@18c per pound.

**Pork**—Fancy, 19@19c per pound. Sack vegetables—Carrots, \$1.25 per sack; beets, \$1.50 @ 1.75; turnips, \$1.50; parsnips, \$1.50 @ 1.75.

**Potatoes**—Oregon Burbanks, \$1 @ 1.25 per hundred; Yakimas, \$1.50; sweet potatoes, 5@5c per pound.

**Onions**—Oregon, buying price, \$1.75 per hundred.

**Green Fruits**—Apples, \$1@2.25; pears, \$2.25; cranberries, Eastern, \$17.50 per barrel.

January 31, 1918.

**Cattle**—Med. to choice steers... \$10.35@11.00  
Good to med. steers... 9.35@10.35  
Com. to good steers... 7.75@ 9.25  
Choice cows and heifers... 7.75@ 9.00  
Com. to good cows and hf... 6.50@ 7.75  
Canners... 3.00@ 6.00  
Bulls... 5.00@ 7.50  
Calves... 7.50@11.00  
Stockers and feeders... 6.00@ 9.00

**Hogs**—Prime light hogs... \$16.10@16.25  
Prime heavy hogs... 16.20@16.35  
Pigs... 13.75@15.00  
Bulk... 16.00@16.25

**Sheep**—Western lambs... \$15.00@15.50  
Valley lambs... 14.50@15.00  
Yearlings... 13.00@13.50  
Wethers... 12.50@13.00  
Wras... 9.50@11.00

## PUT FARM IMPLEMENTS IN REPAIR IN WINTER

When housing the farm implements for winter make a list of repairs needed to put them in shape for efficient service next year. Order these repairs at once and have them on hand when needed. Such precaution may easily save days of delay next spring. Materials are so short that manufacturers will not carry more parts than seems absolutely necessary. An order placed now means that you will not be disappointed next spring.

### Cause of Many Colds.

Many colds are brought on by the birds sleeping in drafts. Close up tightly the back, sides and roof so that no air can get through the cracks. Leave the front partly open.

### Farm Machinery Care.

Put the farm machinery in first-class order during odd times this winter.