

Notice for Publication-Isolated Tract.
Public Land Sale. No. 0418
The Daily Oregon, Land Office, Aug. 12th, 1908.
Notice is hereby given that, as directed by the Commissioner of the General Land Office, under provisions of Act of Congress approved June 7, 1906, Public No. 307, we will offer at public sale, to the highest bidder, at 2:30 o'clock p.m., on the 23rd day of September next, at this office, the following tract of land, to-wit: N¹/₂SW¹/₄-SE¹/₄SW¹/₄, Sec. 15 and NE¹/₄SW¹/₄, Sec. 23, T. 2 S., R. 19 E. W. M.
Any persons claiming adversely the above-described lands are advised to file their claims or objections, on or before the day above designated for sale.

C. W. Moore, Register.
Louis H. Armeson, Receiver.

F. M. Scrivener & Son

First Class
HORSESHOERS

Shop on Main Street, Condon
Opposite Dunn Bros.' Store

WALL PAPER
PAINTS, OILS
AND VARNISH

Largest and best selected stock in the County. Estimates furnished on jobs as to material and labor.

W. A. DARLING.

ALBERT DAMS

Livery and Feed Stable

Our Livery Stock is First-Class. Best attention to boarding stock. Your Patronage is Solicited.

SPRING STREET

Condon Oregon

Sanitary Plumbing!

MEANS doing away with all sorts of diseases, doctors' bills, etc. Think it over but not too long! Have your drain pipes looked after by :

JAMIESON & MARSHALL, Plumbers
Agt's for Sampson Windmill

Condon Livery Barn

Under New Management



J. W. HIRE, Prop'r

Commercial Men Given Careful Attention.

HORSES BOUGHT AND SOLD

W. E. BUERKLE

Shoemaker

General Repair
All work guaranteed.
EAST SIDE
MAIN ST.

"THE GOOD OLD HARVEST TIME"

The good, old harvest days are here and throughout Gilliam county the hum of harvesting machinery goes resounding merrily. Big combined harvesters and headers are hastening to cut the most surprisingly good yield in many years, surprising because it is so large in spite of the lack of moisture, surprising because the yields per acre run as high as thirty bushels testing first quality.

The stirring days of last week when the market rose from 75 to 83 cents and the strenuous efforts of local buyers to start the new wheat to their respective warehouses had no precedent in the annals of Gilliam county. Eighty-three cents is the highest price that Condon wheatgrowers have received for years. J. W. Engberg at Blalock sold for 85 cents, the highest price paid in the county this year.

A large number of farmers expect to make greater profits by holding for further advance in price. And still they know that this is a presidential year. Queer things happen on the eve of a national election.

Our Wheat Standard.

Hyman H. Cohen, commercial editor of the Oregon Daily Journal, was in Condon last week and in a letter to his paper gives the results of some of his observations as follows:

Samples of new wheat secured in store show how short was the supply of moisture the past season. Gilliam county is noted for the good quality and heavy weight of her wheat, which is usually the heaviest in the state. It has been no trouble heretofore for Gilliam county wheat to come up to standard of quality, for in a sense it was this section's grain that has set the standard." Continuing he says, "Considering this lack of regular annual amount of rainfall the crop of wheat now being harvested is wonderful. The past season has taught wheat growers that they would be better off financially were a larger crop of fall wheat sown."

Condon--The Wheat City.

Stephen A. Lowell, of Pendleton, a lawyer by profession and an office-seeker by choice, often breaks into print with "suggestions." His latest is this: "Portland is known as the Rose City, Salem as the Cherry City, Mc Minnville the Walnut City, and there is no reason why Pendleton

should not be justly known as the Wheat City." The learned lawyer has been so busy that he is not aware that Pendleton is already known as the "Prohibition City," and that should be glory enough. Condon, is the

ket. The shipment was made Monday and consisted of 417 sacks of good quality wheat, consigned to the company's warehouse in Albina.

The first car load of this year's wheat was shipped from Clem

The Oregonian's estimate for the entire crop of Gilliam county is 750,000 bushels which is far too low. Yield reports from various sections of the county are encouraging. Here are some of them:

West of town on the Parman ranch, 60 acres have given 891 sacks of wheat. Just on the edge of town the W. L. Barker place will bring, it is said, 30 bushels of sixty-pound wheat and 120 acres on A. Hartman's ranch may go over 30 bushels. Some estimates of that same crop have been placed as high as 35 bus.

On Beecher Flat Chas. Hein harvested 18 bushels to the acre. Samples from the J. J. Fehrenbacher ranch sent to the local mills tested 59 l-2.

In the Mayville Flat wheat is turning out especially good. J. W. Dyer will reap 26 bushels to the acre while on the George Dukek ranch the yield which had been estimated at 22 bushels will thresh at least five bushels higher. Many farmers in that locality will harvest equally fine yields. From Clem where the greater share of the crop had been given up, reports show that J. A. Webster got 450 sacks from 90 acres. S. C. Dodson expects to get from 15 to 18 bushels on the summer fallow. His harvest will give him between 2500 and 3000 sacks of No. 1 wheat, samples of which sent to a Portland firm were reported as the best and the wheat buying firm was eager to corner the whole yield. Geo. Williams in that vicinity will reap 18 to 20 bushels to the acre while his barley will go 30 to 40 bushels. In all he has about 900 acres in grain.

Clem News.

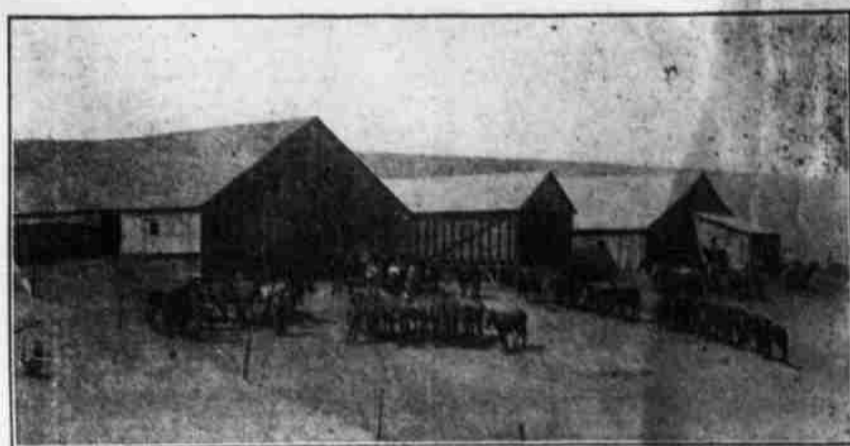
James Larch has finished heading with the exception of 100 acres which J. J. Fehrenbacher will cut with his combine.

Wm. Wendle and W. A. Riggs are heading their barley on the Chas. Wester ranch near town, formerly the Jessie Nye ranch.

E. J. McPherson will finish heading on the S. C. Dodson ranch about the latter part of the week.

Just a Little Rain.

Rain showers fell Wednesday evening and Thursday morning. Harvesting was checked for the time being. The precipitation was .35 inches and the crops sustained no damage. The atmosphere has been cleared and today ideal weather prevails.



Getting ready for the day's work on a 5,000 acre ranch.

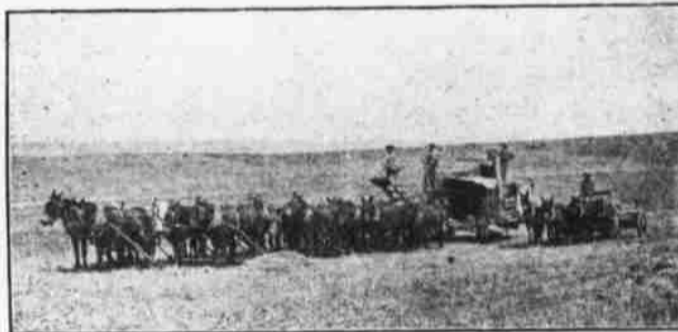
CONDON "THE WHEAT CITY"



In the heart of the great wheat belt, the county seat of Gilliam county and distributing center for a large rich territory.

THE LARGEST PRIMARY GRAIN SHIPPING POINT IN THE UNITED STATES for the year 1907

Surrounding country offers exceptional advantages for investments. Splendid inducements for the home-seeker. Keep your eye on Condon.



Combined Harvester at work near Condon.

Courtesy H. W. Pauling

Wheat City, because it is the greatest primary wheat shipping point in America.

First Car New Wheat Shipped.

The local branch of the Kerr, Gifford Co. won the distinction of shipping the first new wheat from Condon to the outside mar-

ket last Saturday from the Kerr, Gifford & Co. warehouse and consigned to Campbell, Sanford, Henley Co. at Albina.

Some Reported Yields.

Conservative estimates made by Condon wheat buyers place the amount of wheat to be handled here at 600,000 bushels.



Hauling Wheat to the Warehouses and Mills.

When you have spent your money and have received nothing for it and your eyes still trouble you, see

WILLIAMS the JEWELER

Expert Optician

And get your money's worth. We guarantee a fit in all cases.

ARTISTIC PHOTOGRAPHY

Now is the time!

to get your HOME or place of business photographed. Consult us and get prices on all kinds of

OUTSIDE VIEWS

Get your livestock, poultry, and pets photographed. I spent four years in view work so ask me about the best time in order to give you the best results of my experience.

J. P. ROLLINS, Photographer, Condon, Oregon.

Farr Bros.' Meat Market

Choice Fresh and Cured Meats of all Kinds.

Highest Cash Price Paid for Hides.

Johnson Building
Condon, Oregon.

DAVID CANTWELL Blacksmith and Wagon Maker

Work Guaranteed
MACHINE REPAIRING A SPECIALTY
All kinds of repairing
One Block West of Hotel Oregon

S. B. COUTURE & CO.

Prepared to handle all kinds of
Fuel

Phone No. 6 A
Office Lost Valley L. L. Co.

Jost & Phillips

Clem, Oregon

Dealers in

GENERAL MERCHANDISE

Tilt-Keney Shoes for Men are Guaranteed to stand the hardest knocks.

SNOWDRIFT FLOUR

WOOD TO BURN!!

"Procrastination is the thief of time."

BUY NOW!

We will give you the

BEST WOOD, HONEST MEASURE and SQUARE DEAL

ARLINGTON LUMBER CO.

ECONOMY JAR

Wide Mouth, Smooth Edge, Straight Sides,
Crystal Flint Glass, Sure Seal,
Easy to Open, Gold Lacquered Cap,
No Rubber Ring, Airtight,
Sanitary, No Mould,
No Taint. Sold by

P. H. Stephenson