

BIG GAS SAVING FOUND POSSIBLE

Results of Auto Economy Tests Published by State College Engineers.

Oregon State College.—The average motorist in Oregon could save nearly the cost of his license in the course of a year through scientific adjustment of his carburetor, according to results of careful tests on this subject by the engineering experiment station at Oregon State college and just published in bulletin form.

The plan of adjustment tested out by S. H. Graf and G. W. Gleason, of the mechanics and materials department, consists of testing the exhaust gases of automobiles and adjusting the carburetor to the point where combustion is most complete for power and efficiency. Simple apparatus for making such tests is available but has not been put in general use by garages.

Seventy-one passenger cars and trucks of all sorts were tested and re-adjusted, some of them immediately after having the carburetors set by the present "sight and sound" method. In every case savings in gas were effected ranging from 1.9 per cent to 101 per cent and averaging 27.7 per cent for passenger cars and 22.3 per cent for trucks.

In 1929 Oregon motorists burned 152 million gallons of gasoline. A 20 per cent saving on this total would amount to more than 30 million gallons annually which at even 15 cents a gallon would mean a saving of \$4,500,000 a year.

Pest in Wheat Fields
The Weston Leader says some sort of pest, thought to be a cutworm has been working in the wheat fields to the north of Weston. The tender stalks are nearly severed close to the ground and the fields affected have a whitish appearance, according to reports received at the Leader office. The damage is not as yet considered material, particularly where the stand is thick.

Plans For International Highway from Point Barrow to South America

Portland.—A highway that will extend from Point Barrow, Alaska, to the most southern tip of South America, the two extremities of the new world, was discussed and partly mapped out Monday at the meeting of the International Highway association in a conference room at Multnomah hotel. The conference of highway experts was called by the Oregon State Motor association and the Oregon state chamber of commerce.

Primarily, delegates from Oregon, Washington, California and British Columbia gathered to make the International Highway association a reality. It will be officially organized, resolutions will be adopted, an executive committee appointed after the election of officers, and the whole scheme will be discussed. This power set into motion the machinery to bring about the great international highway.

It is the hope, officials of the Oregon State Motor association said, that the meeting would develop a procedure and an organization to direct activities towards the completion of a road connection, Washington with Alaska through Canada. And from southern California with the proposed and partly constructed international highway from Alredo, Texas, through Mexico City into Central and South America.

Irving Vining, leader of the southern Oregon delegation and representative of the state chamber of commerce, presided at the conference. Twenty-five delegates from Canada, Washington, Oregon and California attended.

Urged To Store Grain
Walla Walla.—Efforts to relieve congestion in grain terminals by encouraging farmers to erect small storage plants on their wheat ranches are to be made by a special committee named by the northwest regional advisory board and headed by Sam Thompson of Pendleton which met here Saturday night. The committee is arranging to have standard plans prepared for the construction of substantial and inexpensive bins and elevators where the bulk grain can be stored until it is advisable to ship it.

200 Planes In a Mock Battle, Attacking and Defending San Francisco

San Francisco.—One of the world's most thrilling and inspiring spectacles will be produced by Uncle Sam in the vast blue realms of the sky above Mills Field, San Francisco on April 19 and 20 when 200 army planes will stage a gorgeous and magnificent sham battle in the air for an audience of a quarter of a million people.

San Francisco has been invaded and attacked by the mythical enemy "Reds," and the overwhelming forces of the "Blue Army," under the command of Brigadier-General William E. Gillmore, will thunder down from Mather Field in its defense. This military air fleet of 200 planes will be the mightiest aggregation of fighting air craft ever concentrated in peace time, and will consist of bombers, pursuit, attack, observation and transport ships.

All war maneuver instructions in this stupendous mock conflict will be issued by the commanding officer by radio, each plane carrying a two-way radio communication.

At 2:30 on Saturday afternoon General Gillmore and his staff will land at Mills Field, joining Mayor James Rolph, Jr., of San Francisco, E. Truhee Davison, Assistant Secretary of War, and other officials, officers and dignitaries on the reviewing stand.

From this post these distinguished men will send messages to listening millions through the country over the loud speakers and Station KYA. There will be detailed descriptions of the simulated slaughter and of the amazing and hair-raising high altitude exploits, including spins, loops, dives and rolls.

On the following day there will be a general inspection of this colossal assemblage of army planes by the public, until 2:30 in the afternoon, when the air fleet will leave the airport in three divisions, presenting another never-to-be-forgotten demonstration.

Walla Walla Battles Squirrels
The ground squirrel situation in Walla Walla county gives indications of being fully as bad this season as in former years. There appears to be the usual number of mature rodents which have withstood the poisoning campaign of last year and came through the winter season in good condition for supplying a large number of young. Some poisoning is being done now but many farmers say they do not have good success in poisoning until the young ones come out in May.

INSURANCE PLUS

Every motor vehicle should be protected by Public Liability and Property Damage insurance. Cost very little and is worth many times the cost. Every owner should carry Landlords, Owners and Tenants Liability insurance, only \$7.50 and may save your home. This is an age of ambulance chasers and damage suits. You owe it to yourself and to society. Neglect may wreck your fortune; it is wasting at the bung hole and saving at the spigot. Liability protects you, life insurance protects your family. We write it and service our policies throughout the policy year. Insurance plus service.

B. B. RICHARDS

Real Estate

Wheat, Alfalfa and Stock Land
SHEEP FOR SALE
L. L. Montague, Arlington



DIRECT SERVICE TO SALT LAKE CITY

Travel economically in the comfortable, modern coaches of Union Pacific Stages. Leave Athens:

For Pendleton and Portland
8:05 a. m. 11:55 a. m. *4:05 p. m. 9:15 p. m.

For Walla Walla, Spokane
8:10 a. m. 11:10 a. m. 1:55 p. m. 5:50 p. m.

*For Pendleton only

UNION PACIFIC Stages
C. L. McFadden, Agt.

FARM BOARD IDEA HIT BY GOVERNOR

Kansas Executive Makes a Plea for Parity of Agriculture With Industries.

Topeka, Kan.—Voicing opposition to proposals for reduction in the country's crop acreages, particularly that of wheat, Governor Reed of Kansas made a plea for parity of agriculture as compared with other industries.

The governor said in a statement, that with "every respect" for the federal farm board and "every desire to support it in its effort to reach and solve the agricultural problem," he believed "too much stress is being laid on reduction in acreage, particularly on wheat."

He said he was without sympathy for "the policy of trying to restrict our agricultural production to our domestic requirements, so long as there is a demand in the world for food-stuffs which we can produce and do produce."

Governor Reed estimated limitation of the country's wheat production to domestic requirements would require a 20 to 25 per cent reduction in production.

He said approximately 15 per cent of the steel manufactured in the United States was exported and that any suggestion that steel manufacturers curtail their production to domestic requirements under penalty of having the tariff removed if they failed to do so "would evoke a howl from Pennsylvania, Ohio, Indiana, Michigan and Alabama that would drown out comment on any other subject."

County Nurse's Report For Month of March

Major Babcock, of the Umatilla Indian Agency, has reported that as a result of the dental survey in October, the traveling dentist for the Indian reservations filled 285 teeth and extracted 32 teeth on his recent visit to the Umatilla reservation.

The school children of Weston and Duncan were given the regular routine examination. This completes the entire list of schools in the county. Because of Duncan being accessible only by rail, an entire day was spent in that community. Considerable time was taken in talking to the pupils on health subjects, and a demonstration of artificial respiration was given to the boys of the higher grades. One pre-school child was examined. In the afternoon, the county nurse talked to the adults of the community on various health subjects.

One child, a ward of the county court, was taken to a physician for examination and arrangements made for a tonsillectomy and adenoidectomy the county court allowing the hospital charges.

The usual number of investigations for the county court and other agencies have been made during the past month.

Much literature has been distributed regarding measles and whooping cough which are prevalent over the county. Many talks on diphtheria prevention have been given by the county nurse to the school children and parents.

Chemicals Aid Control Of Worst Oregon Weeds

Progress in control of perennial weeds by use of chemicals is reported by D. C. Smith of the Oregon State college experiment station, but even yet no chemical has been found that is 100 per cent efficient in this respect.

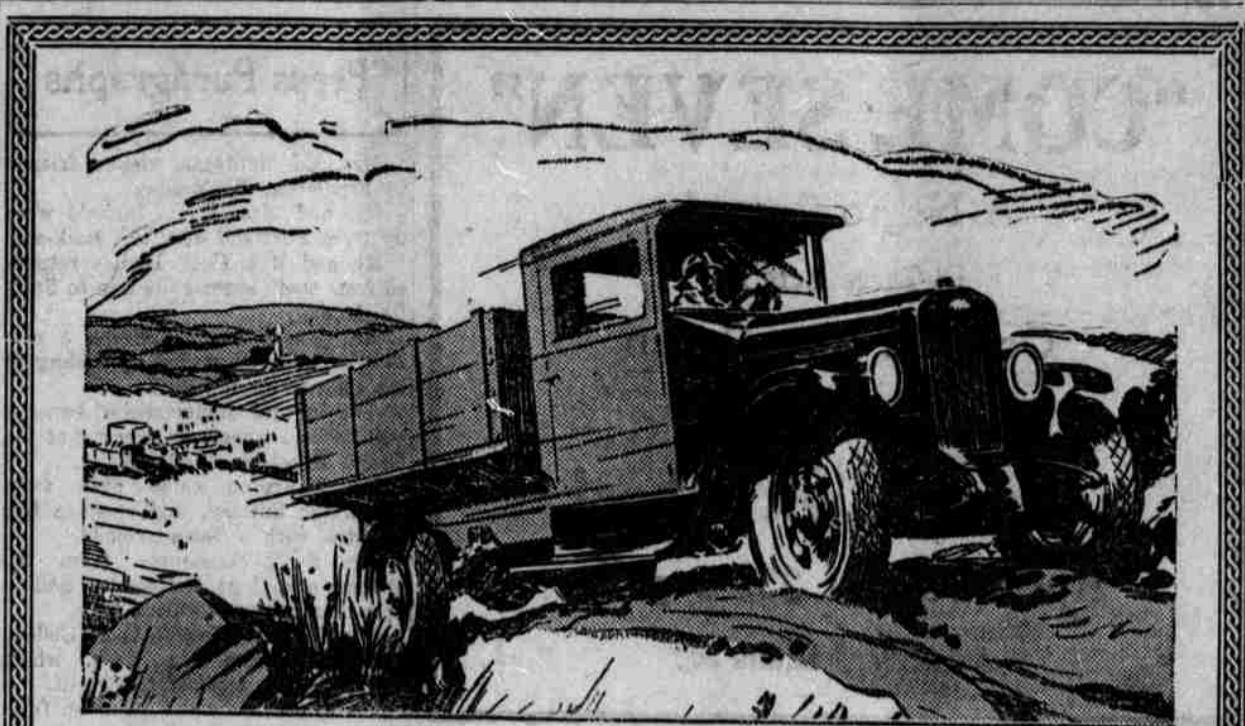
"To be effective a chemical must have the ability of penetrating deeply into the underground roots of the plant," explains Mr. Smith. "Old types of chemicals such as arsenicals, common salt and some patent d weed killers have proved to be unsuccessful for such weeds as morning glory and Canada thistle."

"The use of chlorates is now the biggest thing in weed eradication. Sodium chlorate is favored and is usually applied at least three times before the weeds are killed. It requires about six pounds of material per square yard for the three applications, so that the cost on large areas is considerable.

Experiments are being continued all over the United States. Meanwhile the experiment station advises care in preventing spread of perennial weeds through cultivation methods.

Fruit Depends on Bees
Take all bees out of the northwest and the fruit crop would be cut 50 per cent, declares Floyd J. Buck, sales manager for the Carl J. Buck company of College Place. Bees do alfalfa growers, fruit men and others a great favor in pollinating plants and trees, he stated, and Wenatchee orchardists pay as high as \$6 a hive for the use of Yakima bees to pollinate their trees.

One In Hospital, Other In Jail
As the result of an altercation, Mrs. Theresa Perry, arrested on an open charge as a result of trouble with a neighbor, Mrs. Betty Bolliett, was in Walla Walla the city jail lacking \$500 necessary to obtain her release



Something NEW in a Truck

WAY from the harvester-thresher, loaded to the brim with ripe, yellow grain. Rubber tires rolling through the soft dirt and stubble. Across ditches. Up steep rises with a 60-bushel load! It makes no difference how deep down the bottom is, so long as the wheels can reach it, *this truck will bring every load through!* And on the hard highway it will give you more speed than you can use—safely controlled by 4-wheel brakes.

It is the modern answer to the rural haulage problem, a Speed Truck with two complete power

ranges, with six speeds forward and two reverse. It is International Harvester's famous "SIX-SPEED SPECIAL."

What the grain farmer does with this truck you can do with a capacity load of live stock, milk and cream, produce, fruit, feeds, building materials, or anything else. It is the market's best combination of high road speed and pulling power. It is a handsome quality product, strongly built, up to the minute in every detail. Let the Six-Speed Special tell you its own story. We will give you a thorough demonstration when you say the word.



SIX-SPEED SPECIAL

Rogers & Goodman
(A Mercantile Trust)

Announcement
THE FIRST NATIONAL BANK OF ATHENA, OREGON, Announces that it has completed the organization of a Trust Department and is qualified to act as Executor, Administrator, guardian, or in any other fiduciary capacity. Just think what 37 years of successful banking experience would mean to the executor or administrator of your estate.

Ask us for Information

General Repairing
Done Right at Right Prices
VEEDOL
Oil
Richfield Gasoline
Automobile Accessories

CORNELL'S GARAGE

THE ATHENA MARKET
We carry the best
Meat
That Money Buys
Kipped Salmon, all Kinds of Salt Fish. Fresh Fish, Oysters, Crabs, Clams, Kraut in Season.
A. W. LOGSDON
Main Street Athena, Oregon.

DR. S. F. SHARP
PHYSICIAN AND SURGEON
Athena, Oregon

PETERSON & LEWIS
Attorneys at Law
Stangler Building, Pendleton, Oregon.
Practice in all State and Federal Courts.

WATTS & PRESTBYE
Attorneys-At-Law
Main Street, Athena, Oregon
State and Federal Court Practice

DR. BLATCHFORD
Dentist
Post Building, Athena, Phone 582

Dr. W. H. McKinney
Physician and Surgeon
Dr. Sharp's Office
Office Hours at Athena 1 to 5 p. m. Phone 462. Office Hours at Weston 8 a. m. to 12 noon. Phone 83. Calls made day or night.

Dr. W. Boyd Whyte
CHIROPRACTOR
Stangler Building, Phone 706
Pendleton, Oregon. 957 J

Foley's Kidney Cure
Relieves Headache and Bladder Pain

Jensens
Blacksmith Shop
Repair Work
Prices Reasonable
Athena, Oregon

Why suffer with tired, aching feet?
Regardless of their condition, I can help you
E. M. MOREMEN
Foot Correctionist
22 W. Main St. Walla Walla

Retain . . .
Governor NORBLAD
"Hats off to the Past.. Coats off for the Future!"
Constructive Progressive Dynamic
NORBLAD for GOVERNOR COMMITTEE
KENNETH D. HAUSER, Gen'l Chairman
SAMUEL POWELL, Secretary
Women's Division
Mrs. G. J. Frankel, Chairman
Mrs. M. H. Lamont, Secretary
Headquarters: 208-11 Multnomah Hotel
ATwater 9471 - PORTLAND, OREGON
(Paid Advertisement)

Script Butter Wraps

Goodyear Tires and Tubes
Valvoline Oils
Automobile Supplies, Parts and Accessories
Athena Garage
North side Main Street - - Phone 352