

# The Athena Press

Entered at the Post Office at Athena, Oregon, as Second-Class Mail Matter

### Subscription Rates

One Copy, one year, \$1.50; for six months, 75c; for three months, 50c; payable in advance, and subscriptions are solicited on no other basis

### To Advertisers

The Athena Press circulates in the homes of readers who reside in the heart of the Great Umatilla Wheat Belt, and they have money to spend

VOLUME XXIX.

ATHENA, UMATILLA COUNTY, OREGON, FRIDAY, AUGUST 10, 1917.


NUMBER 31

## A CLEARANCE SALE OF SHEET MUSIC

Mail orders are pouring in every day for some of these great music bargains. Place your order before our August sale closes and take advantage of these low prices.  
\$2.00 Family Music Book for \$1.65—contains 20 pieces of piano and vocal music of moderate difficulty, selected from the works of classic and modern composers and including many old favorites universally known. The piano selections comprise Drawing pieces, Operatic Arrangements, Easy Classics, Sacred Music, Dance Music, Four hands and six hands.  
The vocal selections include Ballads, Sacred Songs and Hymns, Patriotic and National Songs, including Foreign, Children's Songs, etc. 35c to 75c Music for 25c.  
Your choice of 300 Operatic selections taken from such late operas as Katinka, September morn, Ziegfelds Follies, Winter Garden, Liliac Domino, World of Pleasure, Blue Paradise and several others.  
Several of the late "hits" which we are selling at 3 for 25c or 8 for \$1.00 "Where Do We Go From Here," "I Can Hear the Ukuleles Calling Me," "O Johnny Oh," "Back to Hawaii and Me," "Along the Way to Waikiki."

### The Davis-Kaser Co.

Home Furnishing Department Store  
Complete Furnishers of Homes, Offices and Schools—10-20 Alder St.  
Walla Walla Wash.



## Are You

well tired of our tire ad?  
If your auto's not well tired, we'll retire

Sewing Machines \$20 up, all guaranteed. Come and see the wonderful Two-Spool Machine.  
Binders all sold but one. Binder Twine galore.  
Electric and Gasoline Washing Machines and Flat Irons—why not use that waste juice you are paying for every month?

### Watts & Rogers

Just Over the Hill

## The First National Bank

of Athena  
Conducts a General Banking Business  
Capital and Surplus, \$100,000  
We are always prepared to care for the proper needs of our Customers.

ESTABLISHED 1865

## Preston-Shaffer Milling Co.

# AMERICAN BEAUTY FLOUR

Is made in Athena, by Athena labor, in one of the very best equipped mills in the Northwest, of the best selected Bluestem wheat grown anywhere. Patronize home industry. Your grocer sells the famous American Beauty Flour

### Merchant Millers & Grain Buyers

Athena, Oregon. — — — — — Watsburg, Wash.



## We carry the best MEATS

That Money Buys  
Our Market is  
Clean and Cool  
Insuring Wholesome Meats.  
READ & MEYER  
Main Street, Athena, Oregon

## INTERNED GERMANS TOOK TONS OF BAGGAGE

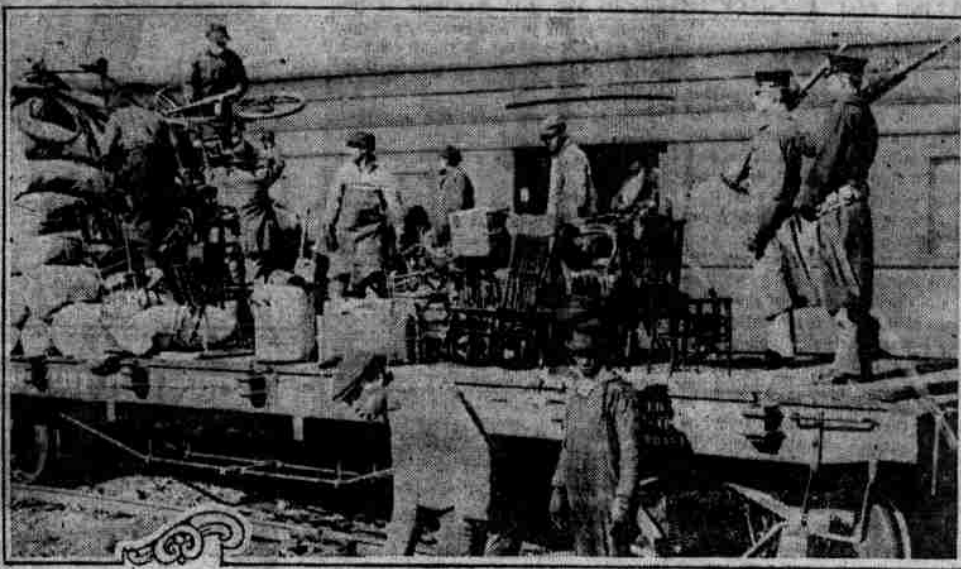


Photo by American Press Association.

When the German sailors were taken from the steamers Eitel Friedrich and Kronprinz Wilhelm at Philaga, several carloads of furniture and clothes were sent with them. This shows one of the cars being loaded.

## FEW EXEMPTIONS WILL BE GRANTED

If there is any doubt as to whether a man is entitled to exemption or discharge from military service under the draft, that doubt, so far as the three Oregon boards are concerned, will always be resolved against the applicant.

This was one of several important matters of policy decided at a meeting held in the office of Adjutant General George A. White Tuesday by the members of the three district boards in the state.

The boards outlined their policy only after going very carefully through the regulations, which were read word for word and thoroughly discussed to clear up any doubt as to their interpretation.

They are unanimously of a mind to make it hard for any slacker or dodger from military service who appears before them. To be perfectly blunt and frank about it, the boards will have a sharp ax ready at all times for gentlemen who seek to avoid military service without a legitimate reason.

Moreover, even when the reason is legitimate, it must be an exceptionally good one. That was made clear in two resolutions adopted by the boards.

One of these resolutions defines the policy of the boards in regard to dependents.

Here is the text: each board will apply when called to pass on appeals from decisions of local boards on claims for exemption or discharge on the ground that the man sought to be exempted or discharged has a dependent or dependents to support:

"Resolved, That these district boards construe a dependent as one who might become a burden upon the community if the person upon whom he or she claims to be dependent was inducted into the military service of the United States."

If there is any doubt about it, the policy of the boards will be to deny the appeal and hold the man for military service.

The other resolution relates to granting of discharges to persons claiming it on the grounds of employment in a necessary industry, including agriculture.

Such claims cannot be considered by local boards and must be made direct to the district boards. They can only be made, however, after the applicant has passed his physical examination and has been posted by the local boards as called up for service and not exempted or discharged.

The solution adopted by the district boards relative to their policy in dealing with such claims follows:

"Resolved, That these district boards will not discharge any person on the ground that he is engaged in any agricultural or other exempted industry, unless such person is necessary to the maintenance of such industry and is regularly and continuously engaged in such industry as distinguished from an occasional or temporary employment therein."

Under this policy the man who works regularly and continuously as a farm hand, or as a ship carpenter, or as a munitions maker, and the like, who applies for discharge on the ground that his work is necessary in that industry, will receive thorough consideration.

But the fly-by-night type of worker, and the man who feels a sudden call back to the soil about the time his turn comes in the draft will not. The boards will be especially on the watch for rich men's sons who desert the golf links and evince an interest in farming when they are due to be called.

### Women Pitch Hay

A shortage of men caused by the exodus to enter the war is forcing Grant county women into the hayfields. The women are driving rakes and bucks and some are even forced to help pitch hay.

A hay shortage is threatened in the Long Creek section and farmers are even cutting the growth in fence corners and other places where mowers cannot operate. Some are cutting rye grass to feed with what hay they have. The Baker county crop is coming up to that of last season, but sales are being made at \$12 and \$14 a ton in the stack.

## STATE HIGHWAY BOARD ACCEPTS BID ON BONDS

The State Highway Commission today opened bids and awarded contracts for roads and bridge construction projects and accepted the bid of the Lumbermen Trust Company, of Portland, on the \$500,000 bond issue, the first sale of bonds under the \$6,000,000 bonding enactment of the last Legislature. The bid was \$71,300 with accrued interest, the bonds dated August 1.

Bids on \$400,000 issue dated December 1, under the Ben Barrett law, opened by the State Board of Control, were all rejected and the Board will re-advertise for bids on August 18. The Lumbermen Trust Company also submitted the biggest offer on this issue. All bids were below par except one for \$2000 of the larger issue, which was at par.

Decision of the board to re-advertise is based on the belief that more satisfactory bids will be received if the bonds are changed to serial form. This is to be done. The sum of \$100,000 will be payable in five years and the same amount in the sixth, seventh and eighth years.

"In making their discount on the bond the bidders have figured on an interest of 4 1/2 per cent," said Governor Withycombe, "though the bonds called for 4 per cent. The securities of the state are not questioned. It is merely a reflection of financial conditions and the unstable condition of the bond market."

### Land Title Faulty

On the grounds that its claim to possession of 40,000 acres of Oregon land was not well established, the Oregon Inland Development Company has lost its appeal to district court to legalize the payment of many thousand dollars on lands by purchasers. The court held the deeds were faulty and that the company's literature misrepresented the land. The land is in Klamath, Douglas, Umatilla and 15 other counties.

### NEGLECTED FOODS.

Their More Liberal Use Would Be a Help in Home Economy.

Among the foodstuffs that American housekeepers have scarcely utilized are turnip tops, radish tops, mustard plants, sorrel and chick peas among the vegetables and the cheese product that can be extracted from whey.

The greens mentioned may all be cooked like spinach or they may be made into delicious cream soups, as they have been for centuries by European housewives. Enough sorrel grows in the average vacant lot in every city to make many purées or cream soups.

Chick peas are as nutritious as beans and when served in a broth are just as tasty. They also can be made into a purée.

Radish tops and mustard leaves make a cheap and appetizing salad.

Professor Mary F. Bausch in a lecture at the University of Washington gave some hints about home economies, one of which was that foods in shallow pans cook more rapidly than in deep pans, thus saving gas. Another was that not a scrap of fat of any sort need be thrown away, but all should go into a double boiler and be tried out for use in frying or as shortening for pastry.—New York World.

### When Pullmans Were New.

The real birth of the Pullman car dates from the closing days of the war between the states. In the Illinois Journal (Springfield) of May 30, 1865, is to be found the following:

"We are reminded of a prophecy which we heard some three years since—that the time was not far distant when a radical change would be introduced in the manner of constructing railroad cars; the public would travel upon them with as much ease as though sitting in their parlors and sleep and eat on board of them with more ease and comfort than it would be possible to do on a first class steamer. We believed the words, ... but did not think they were so near fulfillment till Friday last, when we were invited to the Chicago and Alton depot in this city to examine an improved sleeping car manufactured ... after a design by George M. Pullman of Chicago."

## U. S. FREIGHT TO MOVE QUICK

William Sproule, chairman, of the Western Department of the Railroads War Board, has announced that plans for the solution of one of the most important problems thrust upon the railroads of this country by the war have just been adopted after a series of conferences with authorized representatives of the Army, Navy and the United States Shipping Board. The problem concerns the supply and prompt movement of the thousands of cars required by the government to transport lumber and other supplies to the shipbuilding yards, the Army cantonments and other mobilization points during the next few months. It is estimated that more than 100,000 cars will be needed for Government purposes.

Under the plans agreed upon by the Railroads' War Board and representatives of the Government, the Government will give advance notice to the War Board's commission on car service whenever orders are placed for more than 10 carloads of material or supplies. The Government will also issue, whenever necessary, through its authorized representatives, orders to the railroads on which the supplies are to be shipped instructing them to provide the number of cars ordered within the time specified and at the shipping points designated. To prevent shippers from utilizing for other purposes cars needed for Government service, the Railroads' War Board has issued strict orders to all railroads absolutely to forbid shippers the use of any of the Government ordered cars for any purpose except the loading specified in the Government order.

To assist further in the campaign to keep moving cars bearing Government supplies an envelope in which the way-bills are to be carried has been designed. These envelopes, which will be supplied to all persons or firms making shipments of material for the use of the Army or Navy or the Shipping Board, bear the following heading printed in big type: "United States Government," "United States Army Supplies," "United States Navy," "United States Shipping Board."

### Infected Plaster Found

Presence of tetanus bacillus, the germ of lockjaw, in court plaster recently sold in Nampa, Idaho, was announced Saturday at the office of the State Board of Health, following bacteriological examination. Final decision is withheld, however, until results are reported from the inoculation of a guinea pig from the germ culture. The court plaster was sold by a merchant who passed through Boise Valley several weeks ago.

### Potato Fields Fail

Pendleton Tribune: A strange and inexplicable condition exists in many potato fields in this vicinity, both in the gardens of the city and in the country. The tubers are not maturing, but are sprouting in the ground. An examination of the hills discloses abundant sprouts from small potatoes sometime as small as a pea. Frequently as small as a walnut. None of them are of sufficient size to warrant digging, and a complete loss of the crop is probable in most instances. There may be a few early varieties which have grown sufficiently before sprouting to serve the table in the early fall, if dug and cared for at once, but most are too small for any purpose, except hog feed, and they would not be worth the expense of digging for that. Thus far no one has presented any satisfactory reason for the anomalous situation. In any event there will be no substantial potato yield in this section of the country.

### Homestead Ruling Made.

Land selected under the grazing homestead law, where the applicant is allowed to take 640 acres, must be in one body, according to a ruling by the General Land Office sustaining a ruling of the North Yakima Land Office.

## ALL WHO TRAINED ARE NOT OFFICERS

A Presidio Special says: With smiling lips but eyes that could not hide the bitter disappointment of being among those culled, several hundred students at the reserve officers' training camp, who failed to get commissions, bade good bye to their fellow students and chums. They looked peculiarly out of place in civilian clothes—clothes wrinkled from three months repose in trunk and worn with an awkward, almost apologetic air. Sun reddened faces somehow did not fit well with linen collars.

"I'm heading for the regular Army—see you in the trenches, old man. Good luck," were the farewells of many. With their three months of intensive training, virtually all who have left camp will find little difficulty in securing posts as non-commissioned officers in the new Army—indeed, many have been recommended for and have accepted tentative offers of such offers.

Those who departed were not failures in any sense of the word. If they were they would not have lasted until the end of camp. There simply were not place for all who trained and it was accepted as a matter of course that many would be dropped this last month. But all the young Americans fervently hoped they would not be among the number.

That the judgment which said who should go and who should not was infallible is contended by no one. The army officers in charge of the camp had a monumental task before them in the selection, in three months' time, of men who were qualified or who showed promise of becoming qualified to officer National Army. Some there were who were told to go who would better have remained than some who stayed. In companies of from 150 to 200 men, in charge of two or three officers it is impossible in the short period of training for the officers unaided to pick the best. But it is conceded generally that they tried to, conscientiously and to the utmost of their ability.

In the majority of the companies, the verdict of the Fates was read, or posted on bulletin boards shortly before 6 o'clock Friday morning, directly after reveille and just before breakfast. Some men could not hide tears of disappointment which welled to their eyes when their names were found on the fateful list. Others smiled, in a rather forced way to be sure, and insisted that such was all they had ever expected from the camp.

"For the love of Pete, Jim, how did you ever stay on when they let such a good man like me go?" joked others.

### Sheepmen Kick

Great damage to the sheep industry if the program of prohibiting the sale of lambs is adhered to, is foreseen by the sheepmen of Umatilla county, who have asked for a conference with the Governor and hope he will appeal to Herbert Hoover against the unfairness of the proposal. It is pointed out that the range lamb matures in about five months, and that there is no object in holding it after that time. Selected ewes produce more and better lambs than young ones.

### Canadian Wheat Early.

The first delivery of the new wheat crop was made at Grouta, Manitoba, Tuesday. It graded No. 1 Northern, and yielded 24 bushels to the acre. This is the earliest date on record at which new wheat as been marketed in Manitoba.

### Shun Young Game.

Shun the inclination, when you are rambling afield, to pick up infant game birds and take them home. Granting that they are "cute," the Oregon game law is positive in its ban on irregular adoption, and its fine ranges from \$25 to \$250.

## FINE TOILET ARTICLES

We have a complete line of the famous "Lazelle" toilet articles, consisting of face creams, powders, perfumes, talcum powder shaving cream, toilet waters, and a full line of Colgate's toilet articles. See our window.

"Lazelle" talcum powders in Mas-	Hinds Honey and Almond Cream .45	Beauty boxes containing talcum
satta, Japanese Honeyuckle, Field	Honey Girl Cream of Almonds .25	powder, soap, perfums, face pow-
Violet, Sweet Pea and Babykin .12	Lazelle toilet waters in White Rose	der and cream .23
Massatta face powder .23	of Ceylon, Field Violets, White Li-	Powder Puffs .05-15
Japanese Honeyuckle Powder .45	lac and Massatta .23 .69	Witch Hazel .12
Colgates Charming face Powder .28	Massatta soap .03-19	Bay Rum .12
La Blanche face powder .45	Palmolive Soap .10	Colgates tooth paste .03-19
Colgates talcum powder .12	Cashmere Bouquet Soap .19	Lazelles shaving cream .32
Mennens talcum powder .12	Cuticura Soap .19	Colgates shaving stick .19
Colgates cold cream .30	Resinol Soap .19	Colgates shaving powder .15
Peerless peroxide cream .15	Lazelles perfums in all odors in	Colgates shaving soap .05
Palmolive Vanishing Cream .45	plain and fancy bottles .23 to .69	Peroxide .12
Massatta Theatrical Cream .35	Rouge Vanity boxes .28	Vaseline .04

See the new Silk Envelope Chemise Suits, \$2.98 and \$3.98

# J. C. Penney Co.

THE GOLDEN RULE  
175 BUSY STORES