

Lodge Directory

BANDON LODGE No. 130
A. F. & A. M.

Stated communication Friday after the full moon of each month. Sojourn Master Masons cordially invited.
E. W. SCHETTER, Secretary.

KNIGHTS OF PYTHIAS

Delphi Lodge No. 64, Knights of Pythias. Meets every Monday evening at Knights hall. Visiting Knights invited to attend.

CHAS. F. PAPE, C. C.
VIC. BREUER, K. of R. & S.

BANDON LODGE No. 133
I. O. O. F.

Meets every Wednesday night at the I. O. O. F. hall. Visiting Odd Fellows always welcome.

W. A. PANTER, N. G.
PHIL PEARSON, Sec'y

OCEAN REBEKAH LODGE
No. 126

Meets on the second and fourth Tuesdays of each month at the Odu Fellows hall. Visiting Rebekahs always welcome.

LENORE HUNT, N. G.
LELIA FISH, Secretary.

Professional Cards

DR. R. V. LEEP
Physician and Surgeon
Office in Ellingson Bldg.
Phone 394.
BANDON, OREGON

DR. H. L. HOUSTON
PHYSICIAN AND SURGEON
Office at Bandon Hospital in Fahy-Morrison Bldg.
Hospital 492 Bandon, Ore.
Office phone 491 4-1-19

I. N. MILLER
Attorney and Counselor at Law
Notary Public
Rooms 1 and 2, First Nat'l Bank Bldg.
Bandon, Oregon

DR. FRED COVELL
CHIROPRACTOR
Office Hours: 9 to 12 a. m.; 2 to 5 p. m.
Opp. Hotel Gallier
Office in Bandon Sanitarium,
Bandon, Oregon

DR. F. A. VOGUE
DENTIST
PYORRHEA SPECIALIST
Telephone 1222
Ellingson Bldg. Bandon, Ore.

DR. S. C. ENDICOTT
Dentist
Office 1241 —Phones— Res. 1161
Office in Ellingson Bldg.
BANDON, OREGON

F. J. CHATBURN
ATTORNEY-AT-LAW
Practice in all courts. Office in Racket Store building on Second Street, Bandon, Oregon.

GEO. P. TOPPING
Attorney at Law
Practices in all Courts. Office Over Bank of Bandon.

C. R. BARROW
ATTORNEY AND COUNSELOR
AT LAW
NOTARY PUBLIC
Farmers' Phone: Office No. 431
Residence Phone 143
Office over Skeel's Store,
Coquille, Oregon

JOHN NIELSON
Notary Public, Insurance, Real Estate and Book-keeping
Bandon, Oregon

DR. ARTHUR GALE
Physician and Surgeon
Phones: Office 351; res. 352.
Office in Ellingson Bldg.
BANDON, OREGON

Thrift!
Some years ago when I was working for a civil engineer the resident engineer requested the draftsman in the London office always to send linen tracings, and as large as possible. On visiting the work I discovered the reason. When the tracings were done with his wife boiled them down and made shirts for her little boys.—E. Arden Minty, F. R. I. B. A., in London Mall.

Wear a 1919 Red Cross Button CELEBRATING DEC. 25



The Farmer Receives More Than Five Thousand Dollars a Minute From Swift & Company

This amount is paid to the farmer for live stock, by Swift & Company alone, during the trading hours of every business day.

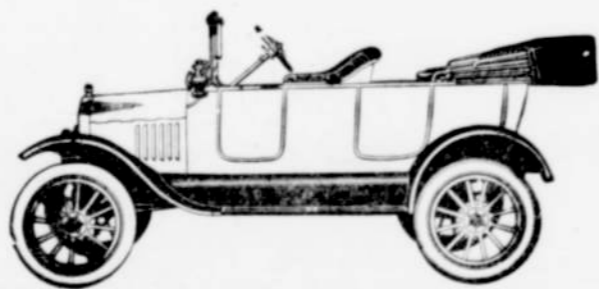
All this money is paid to the farmer through the open market in competition with large and small packers, shippers, speculators and dealers.

The farmer, feeder, or shipper receives every cent of this money (\$300,000 an hour, nearly \$2,000,000 a day, \$11,500,000 a week) in cash, on the spot, as soon as the stock he has just sold is weighed up.

Some of the money paid to the farmer during a single day comes back to the company in a month from sale of products; much does not come back for sixty or ninety days or more. But the next day Swift & Company, to meet the demands made by its customers, must pay out another \$2,000,000 or so, and at the present high price levels keeps over \$20,000,000 continuously tied up in goods on the way to market and in bills owed to the company.

This gives an idea of the volume of the Swift & Company business and the requirements of financing it. Only by doing a large business can this company turn live stock into meat and by-products at the lowest possible cost, prevent waste, operate refrigerator cars, distribute to retailers in all parts of the country—and be recompensed with a profit of only a fraction of a cent a pound—a profit too small to have any noticeable effect on the price of meat or live stock.

Swift & Company, U. S. A.



FORD
THE UNIVERSAL CAR

Ford Owners Attention

We carry a Full Stock of PARTS and have the necessary equipment and mechanics to keep your car in good running order at the least expense.

BANDON GARAGE COMPANY
AGENTS

Yuletide Festival Once Marked Return of Sun God.

Observance of Day is Habit of More Than Twenty Centuries' Standing— "Yule" Means Sun—Community Christmas Tree.

Celebrating the 25th of December is a habit of more than twenty centuries' standing. It is a remnant of that good nature of our early ancestors, which has disappeared to a great extent with the irritating problems of civilization. All the rest of the year, writes Frederic J. Haskin, we fight and grab things away from each other and wear our nerves to a frazzle, but at Christmas we close our commercial exchanges, eat tremendous quantities of food and send presents and postal cards to our friends and relatives bearing our good wishes. At least this is what we are supposed to do. Many people do a great deal more in the way of community Christmas trees, visits to the hospitals and baskets for the poor, and still others regard the whole thing as absurd and consider abstinence from Christmas gifts a sign of strength of character.

Long before the birth of Christ our ancestors in northwestern Europe celebrated the 25th of December, which marked the passing of the winter solstice or the return of the sun in the heavens after conquering the powers of darkness. That was the day of the sun worshippers. The problem of the universe was just beginning to puzzle and our ancestors figured it out in a straightforward manner that was not half bad for supposed savages. All plant life, it was observed, depended on the sun for its existence, and all animal life depended on plant life, so that the power of the sun was greatly respected and it was personified in the person of the god Thor. Thor was watched with considerable interest, since there was always some doubt as to whether he would survive the winter solstice. Hence the feasting and merrymaking when he continued to shine clear and strong in the heavens.

Meaning of the Word "Yule."

Besides Thor there were numerous gods who lived in the branches of trees. Therefore the people gathered mistletoe boughs and holly branches and put them in conspicuous positions in their houses, where they might easily be seen from the outside, in the hope that some wandering god would take a fancy to them and take up his residence among the red berries. In Germany the early Huns chopped down the evergreens and brought them indoors for the same purpose. The burning of the yule log and the term yuletide are survivals of these early December festivals whose influence is still to be seen today in our own Christmas celebrations. "Yule" means sun.

With the dawn of Christianity and the conversion of the sun worshippers, the birth of Christ was substituted as the cause for celebration and the festivities became religious demonstrations. The people still gormandized, trimmed their houses with holly branches and gave presents, but the 25th of December usually saw them comfortably seated in church.

So Christmas has come down to us with all these traditions. The German Santa Claus legend has improved it considerably for the children, and it is now known almost entirely as the children's season.

Community Christmas Tree.

Among the finest Christmas institutions today is the community Christmas tree, which originated in Madison square, New York, five years ago and since then has spread to communities all over the United States. The community "Tree of Light" is usually planted in a central location in the city, trimmed with balls and ornaments and lighted with electricity. Citizens are organized into committees to collect donations for the tree and employ bands of musicians to play Christmas carols and hymns. In Baltimore last year groups of men and boys carrying holly-trimmed lanterns walked through the streets singing and greeting each pedestrian with "Merry Christmas!"

While every year there is an increasing number of persons who decide to "be sensible" and send cards in the place of Christmas presents, the average person lacks the courage to face his family empty-handed on Christmas morning. But Christmas is a spirit, which you either have or haven't. If you haven't it, the holidays are only a bore; on the other hand, if you allow yourself to become enthusiastic there is really a lot of fun to be derived from it, even though you're lonely and away from home. Last year a traveling man who was compelled to spend Christmas away from his family in a strange city gathered a number of little tenement waifs together, took them into a large restaurant and treated them all to a Christmas dinner. "I never had so much fun in my life," declared the traveling man.

The Christ-Babe.

We give the Christ-babe his cradle in our hearts, and afterwards he sets up his cross in our hearts, and in our hearts he plants his throne.

A Real Good Fellow.

A real good fellow is a man who keeps something of the Christmas spirit all the year round.

FARM NOTES

(From Coos Co. Ag. Bulletin)
J. L. Smith, Co. Agt. Editor

I. Nordstrom, of Four Mile, south of Bandon, has just bought from Ed. Cary, Carleton, Ore., another registered Jersey heifer, whose dam is St. Mawes Rose, one of Cary's famous cows. Mr. Nordstrom now has a good foundation herd of six head of high class stuff.

Roy Shull, of Coquille, Felix Hull & Son, of Riverton, and Roberts & Racleff, at Parkersburg, have each recently purchased a Cleveland caterpillar tractor and will now feed fewer horses and more cows. That's the system.

Miller Bros., 1 mile north of Coquille, harvested this fall 525 sacks (2 bushels to the sack), of potatoes on exactly 2.8 acres of creek bottom land. If you can beat this just send us the facts and figures please.

Jim Jenkins, of Parkersburg, who has won the pumpkin race for the last two Corn Shows, says he is going to win it again. Will you let him do it?

ORDER LIME STONE

We have at last got enough orders together for a car load of ground lime rock from the State Lime plant for certain farmers on Coos Bay and another about ready for some Coquille Valley farmers.

The price of the lime including freight and war tax by carload to Marshfield is \$4.27 per ton; to Coquille \$4.38 per ton and to Myrtle Point, \$4.48 per ton.

The lime is in the form of ground lime rock unburned. It comes in bulk unstacked. After ground is plowed apply the lime broadcast or with grain drill over the plowed surface soil in the fall or early spring at about two or four tons per acre.

All orders for lime must be paid in advance.

Dead Diggers Double Dollars

Investigations show that each digger squirrel destroys one dollar's worth of crops in a year. You can figure out about how many dollars you saved by estimating the number

of diggers you killed this year with the poisoned barley furnished you from the County Agent's office.

We distributed 513 quarts to 78 farmers this year. 1 quart will kill at least 50 diggers, but to be conservative divide that number by two and multiply it by 515 quarts and you have 12,875 dead diggers; now cut that just half in two if you want to and you still have 6,437 dead ones, which means \$6,437 saved. If you still think that's too big a life, cut it in two again and you have 3,218 diggers and dollars. Did it pay to poison 'em?

For Inflammation and Pain

In case of "Flu," pneumonia or gripe, PUROLA Medicated Plaster is just the thing. "Draws like a magnet," no blistering. Ask your druggist. Cans 35c and 65c. 1tc.

Harmful Loss of Temper.

Although unbridled rage is helpful in fight among the lower animals, needless to say it is the reverse of serviceable in the deliberate fighting of man against man, as in boxing and fencing, for here anger interferes with those cautious methods of attack and defense which are essential to success. To lose one's temper in fighting of this kind may be to lose the fight. With this reservation it is curious to note the close kinship between the combatant instinct of man and of the lower animals. The untamed man, when enraged, assumes in very truth the aspect of the tiger; he puts himself in a threatening attitude, frowns, glares, rolls his eyes, grinds his teeth, snarls, growls, even roars—thus instinctively seeking to strike terror into his opponent.

Thibet Practically Free.

Thibet is controlled virtually by the natives, who are a branch of the Mongol race, the Chinese government looking after foreign relations and maintaining small garrisons of Chinese troops.



Cleveland Tractor

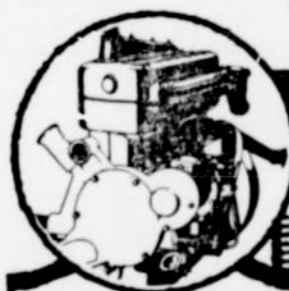
Have just secured the agency for this machine. The CLEVELAND is a Track Laying Tractor and is one best adapted for this section of the country.

Write or telephone for literature and information.

F. L. GREENOUGH

Phone 1272

BANDON, OREGON



This, the "L"-Head type of automobile engine, like all internal combustion engines, requires an oil that holds its lubricating qualities at cylinder heat, burns clean in the combustion chambers and goes out with exhaust. ZEROLENE fills these requirements perfectly, because it is correctly refined from selected California asphalt-base crude.

"Proven Entirely Satisfactory"

Only perfect satisfaction can account for the use of ZEROLENE by the majority of automobile owners.

Leading coast distributors also testify that it is "a most satisfactory motor oil." They know from the records of their service departments—and we know from exhaustive tests—that ZEROLENE, correctly refined from selected California asphalt-base crude, gives perfect lubrication with least carbon deposit. Get our lubrication chart showing the correct consistency for your car.

At dealers everywhere and Standard Oil Service Stations.
STANDARD OIL COMPANY
(California)

ZEROLENE

The Standard Oil for Motor Cars

H. H. NELSON, Special Agent
Standard Oil Company Bandon, Ore.

You'd hardly know Pete was chewing



Yet he says he gets more satisfaction out of his small chew of Gravelly than he ever got out of a big chew of ordinary tobacco. "Keal Gravelly has a pure, rich taste," says Pete. "It's sweetened just enough, and one small

chew holds its good taste so long. I figure that this class of tobacco costs me nothing extra—maybe less than I'd have to spend for ordinary plug."

It goes further—that's why you can get the good taste of this class of tobacco without extra cost.

PEYTON BRAND
Real Gravelly Chewing Plug
each piece packed in a pouch

P. D. GRAVELLY TOBACCO CO., DANVILLE, VA.