

GOING OUT OF BUSINESS

We expect to move what we have left of our stock to Marshfield between the 10th and 15th of February, and from now until February 6th we will make you some astonishingly low prices on anything and everything that we have for sale. Come in and see for yourself.

BANDON DRY GOODS CO.
A N D
PEOPLES 5-10-15c STORE

The Grand Theatre

Bandon's Popular Amusement Resort

"THE PERILS OF PAULINE"

No. 17

Presented in Two Thrilling Reels

The Pauline pictures have met with tremendous success thruout the United States. Don't miss this installment

SHOWN

NEXT SATURDAY, JANUARY 30th

---FIVE SPLENDID REELS OF PICTURES---

SUNDAY--Klaw and Erlanger's Special Feature "The Wages of Sin" a powerful story elaborately produced.

C. I. Starr

Plumbing and Steam Fitting
First Class Work guaranteed.

Office in Tritt Bldg. on 2nd St.

FOR RESULTS ADVERTISE

IN THE BANDON RECORDER.

W. E. STEINOFF

THE HARNESS MAN

Complete stock of harness, shopping bags, trunks, suit cases, valises and traveling bags.

LOCAL NEWS ITEMS

N. N. Neiman of Coquille came to town yesterday on business.

John W. Felter was a Coquille visitor the fore part of the week.

Perils of Pauline at the Grand next Saturday, a great picture.

Dr. and Mrs. L. P. Sorensen are visiting friends in Marshfield for a few days.

The city council will meet in regular session at the city hall next Wednesday night.

Chas. Jamieson of the firm of Jamieson & Page, was among the Bandonians who made the trip to Marshfield Thursday morning.

The Presbyterian Ladies Aid Society will meet at the home of Mrs. P. Langdell Wednesday afternoon February 3rd.

H. W. Painter was in the city, from Marshfield, Wednesday, looking after business affairs. He was accompanied by Mrs. Painter.

Captain Scott has been acting as night clerk at the Hotel Gallier for a few nights while Edmund Gallier is rusticated down on the Gallier ranch.

R. W. Ensign was in from his ranch south of town Wednesday and made the Recorder office a pleasant call. Mr. Ensign reports that everything is looking O. K. in his section of the country.

George W. Moore of the Moore Lumber company is expected in Bandon the later part of this week or the first of next. It is hoped by many interested that he will have some definite announcement to make concerning the starting of the local mill.

Monday morning of this week A. D. Mills, resident agent for the St Paul Fire and Marine Insurance company received a check from the company for \$1,000 covering the insurance carried by Thomas Bachelor on the house and effects that he lost in the fire of two weeks ago. This is something of a record in the matter of securing settlement of insurance losses in Bandon.

Don't fail to see this masterpiece next Sunday at the Grand.

ELECTRIC LINE FROM KLAMATH TO EUREKA.

Klamath Falls, Or., Jan. 28.—An electric railroad between Klamath Falls and Eureka, on Humboldt Bay, California, is the latest report to be started in this section. The advices come from Eureka.

According to reports, the line is to be built by the Hill and Guggenheim interests. The Hills, it is understood are to run a transcontinental line to Klamath Falls, and by the electric line, extend to a terminal at Eureka, making a port several hours closer to the orient than any other Pacific coast port in the United States. The Guggenheims are said to have mining properties in Siskiyou county that are ready for development.

The route is said to be along the Klamath river, mainly, entering Humboldt county at Trinidad. A power plant at Klamath Falls and one at Isha Pisha Falls on the Klamath will be built to furnish the power, according to the report.

DOUBT LOCATION OF MINE AT PORT ORFORD

PORT ORFORD, Jan. 28.—IT is not believed here that the gold find of J. R. Smith is located at the head of Lobster creek, as is stated but there is a general feeling existing that a gold find discovery of considerable importance has been struck and that Mr. Smith may have what he claims.

Brief Notes of Interest.

President Wilson vetoed the immigration bill because it refused a literacy test of all immigrants.

The Men's Fellowship Club of Marshfield desired municipal docks, good roads and bonding for a railroad at their meeting Jan. 27th.

About sixty members of the Bandon Lodge Loyal Order of Moose enjoyed a big banquet and talkfest at the Moose Hall last night. Those present say they had a very pleasant and profitable evening.

The Loyal Order of Moose announce that they will give their third annual ball at Dreamland Pavilion on Thursday, Feb. 12.

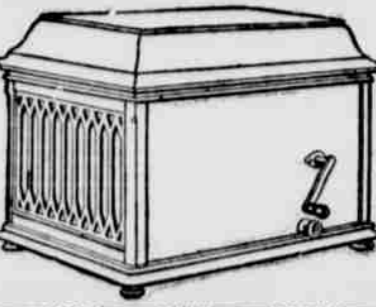
Klaw & Erlanger present a special three part feature—The Wages of Sin. Wanted—Girl to do light house work and to stay at the house nights. Apply at the Recorder office.



YOU NEED A VICTROLA OR A NEW EDISON DISC PHONOGRAPH.

WE HANDLE THE FAMOUS STRAUDE PIANO.

SABRO BROS
BANDON, ORE.
—TELEPHONE 751—



---YOU'LL PAY YOUR RESPECTS---



to our bread by buying regularly after you have once tried it. You'll at once realize the absurdity of sweating over a hot fire when you can get such white, light, toothsome bread as ours without any trouble and at less expense than you could bake it for at home. Try just one loaf.

SEASIDE BAKERY

Subscribe for the Bandon Recorder, \$1.50 a year