

The Cook's Nook

Ideas For The Last Of 'Forty
And The First Of 'Forty-One
TURNIP-BOOTS FARE PLAY!
 Have a bit of turnip! Take a turn at turnip! Food of ancient Greece, 2,000 years ago, food for moderns, food with vitamins therein, white or yellow—is turnip! Boil it, sauce it, shred it, raw, salad-wise, french-fry it. Try it thus:

FRENCH-FRIED TURNIP
 Cut peeled turnips as for French-fried potatoes. Dip in egg and milk mixture, then in cracker crumbs and deep fry in hot oil (375° F.) until golden brown. Serve hot.

Brazilian Turnip: Peel and cube 1 medium sized turnip, white or yellow. Boil in salted water until tender; drain and place in heated serving dish. Top with sauce made by browning ½ cup sliced or chopped Brazil nuts in 2 tbsps. melted butter, then adding ¼ cup but-

ter and 1 tsp. lemon juice. Blend well over hot water in double boiler and while hot, pour sauce over turnip. Serve immediately.

COMES ECONOMY
 The shouting and tumult die—and so does your budget after a holiday spending spree. Keep costs down with:

Ham Bran Lofe Deluxe
 1 lb. smoked ham
 ½ lb. ground lean pork
 ¼ lb. ground veal
 2 eggs
 1 cup milk
 1 cup all-bran
 ½ tsp. salt
 2 tbsps. minced, green pepper
 ½ cup brown sugar
 1 tsp. whole cloves

Combine meats with eggs, all-bran, milk, salt and green peppers; mix well. Sprinkle brown sugar and cloves in bottom of loaf pan; add meat mixture.

Bake in moderate oven (350° F.) about 1½ hours. Yield: 1 loaf (5x9x3); 8 servings.

WANT TO WIN FRIENDS
 Please your gourmet friends (and who isn't one?) with a bulging basket of glass-packed delicacies—a gift idea anyone can see through! Give them jars of tiny pickled beets, pickled onions, artichoke hearts in oil, jars of cheese spreads, devilled ham, smoked salmon, chicken liver paste, olive butter. Jars too, of herring, lobster smoked tongue, dried beef—all of them ready to serve a dozen different ways. Give yourself a collection too—good for the soul and palate.

Coffee Scotch Frosting
 1 cup sugar
 ½ cup brown sugar firmly packed
 2/3 cup double-strength freshly made coffee
 1 tsp. light corn syrup
 2 egg whites

Combine sugars, coffee and the corn syrup in a sauce pan. Place over heat and stir until sugar is dissolved and mixture boils; continue without stirring until a small amount dropped from a spoon spins a thread (240° F.). Beat egg whites stiff, pour the syrup slowly into the egg whites beating constantly. Continue the beating until frosting holds its shape. Makes enough for top and sides of two 9-inch layers.

Cut into squares. Yield: 32 sqs. (5¼ x 9½ inch pan).

Popcorn Balls
 1 cup molasses
 1 cup dark corn syrup
 1 tsp. vinegar
 3 tbsps. butter
 3 qts. salted popcorn

Combine molasses, corn syrup and vinegar in a sauce pan. Cook over low heat, stirring constantly until the soft ball stage (238° F.) is reached. Remove from heat, add butter and stir only enough to mix. Slowly pour over the popped corn. Form in to balls with hands, using as little pressure as possible. It makes 16 to 18 balls.

RELIEF PROGRAM TO BE CONDUCTED

A Christmas relief program, conducted for the past several years, will be put in effect again this year.

This activity is sponsored by the Kiwanis Club and is intended to co-ordinate the efforts of the churches, schools, lodges and civic organizations who, each year, engage in this seasonal work, and all are invited to participate.

Food staples, clothing and money will be needed and may be left at the Beaverton high school.

BULLIS ELECTED VICE-PRESIDENT

At the Washington County teachers' institute held at Garden Home Saturday, John R. Cor Principal of Hillsboro high school was elected President to succeed Clyde Hopkins of Sherwood, Val H. Bullis of Beaverton was elected Vice President; Harriett Ford re-elected Secretary and Lester Mooberry, Treasurer. The State Convention will be held in Portland December 26-28. Teachers from Washington county to act as delegates are as follows: Ray Haas, Aloha; Lowell Chase, Le Roy Smith, Forest Grove; and Beatrice Peterson, Raleigh school.

HEARING TO BE HELD ON CROSSING

For several months Mayor W. E. McCloskey has been aware of the advisability of a crossing over the Southern Pacific railroad that would connect Hall street, which lays south of the tracks, with North Main street, which passes between Johnson's garage and the George Hughson residence would connect the south side of the tracks directly with the Canyon road.

Some time ago application was made to the proper authorities for the construction of such a crossing and this week the Mayor received word that a hearing will be held December 23, a week from next Monday at 11 a.m. in the Beaverton City Hall when this matter of ordering a crossing will be taken up by the Public Utility Commission.

Peanut Butter Marzipan
 1 cup sifted confectioners' sugar
 ½ cup peanut butter
 ¼ tsp. salt
 1 cup very finely chopped almonds, blanched
 1 tsp. vanilla
 3 tbsps. water (about)

Place sugar, peanut butter and salt in a bowl, blend with a fork or pastry blender, until evenly mixed and like a coarse meal. Add nuts, then vanilla and 2 tbsps. water and stir until it is blended. Add remaining water, a small amount at a time, kneading only until the mixture is of the consistency of fudge. Shape into 1-inch rolls. Wrap in waxed paper and store in a refrigerator until slice as needed. Yield: 2 6-inch rolls, approximately ¼ lb.

Black And White Squares
 3 cups confectioners' sugar
 2½ cups coconut
 2 egg whites
 1 tsp. vanilla
 ½ cup butter
 2 sqs. unsweetened chocolate
 1 cup all-bran

Combine sugar, coconut, melted butter, slightly beaten egg whites and flavoring. Divide into 2 portions. Pack ½ the mixture in a loaf pan lined with waxed paper. Add melted chocolate and all-bran to remaining half of mixture. Pack on top of first layer in the pan. Chill thoroughly.

Pine-Berry Cocktail has a Tangy Flavor That Adds Lustre to Holiday Menus



By BETTY BARCLAY

A supply of canned unsweetened Hawaiian pineapple juice in your refrigerator during the holidays will insure pleasant drinking for your family as well as friends who drop in to see your Christmas tree.

Because of its affinity for other fruit juices, pineapple juice makes a splendid base for fruit drinks and punches that will be attractive for service during the holiday season.

Before your Christmas dinner or other holiday dinners serve pineapple cocktail. It's a tangy blend of canned unsweetened Hawaiian pineapple juice, bottled cranberry cocktail, orange and lemon juices, subtly flavored with spice.

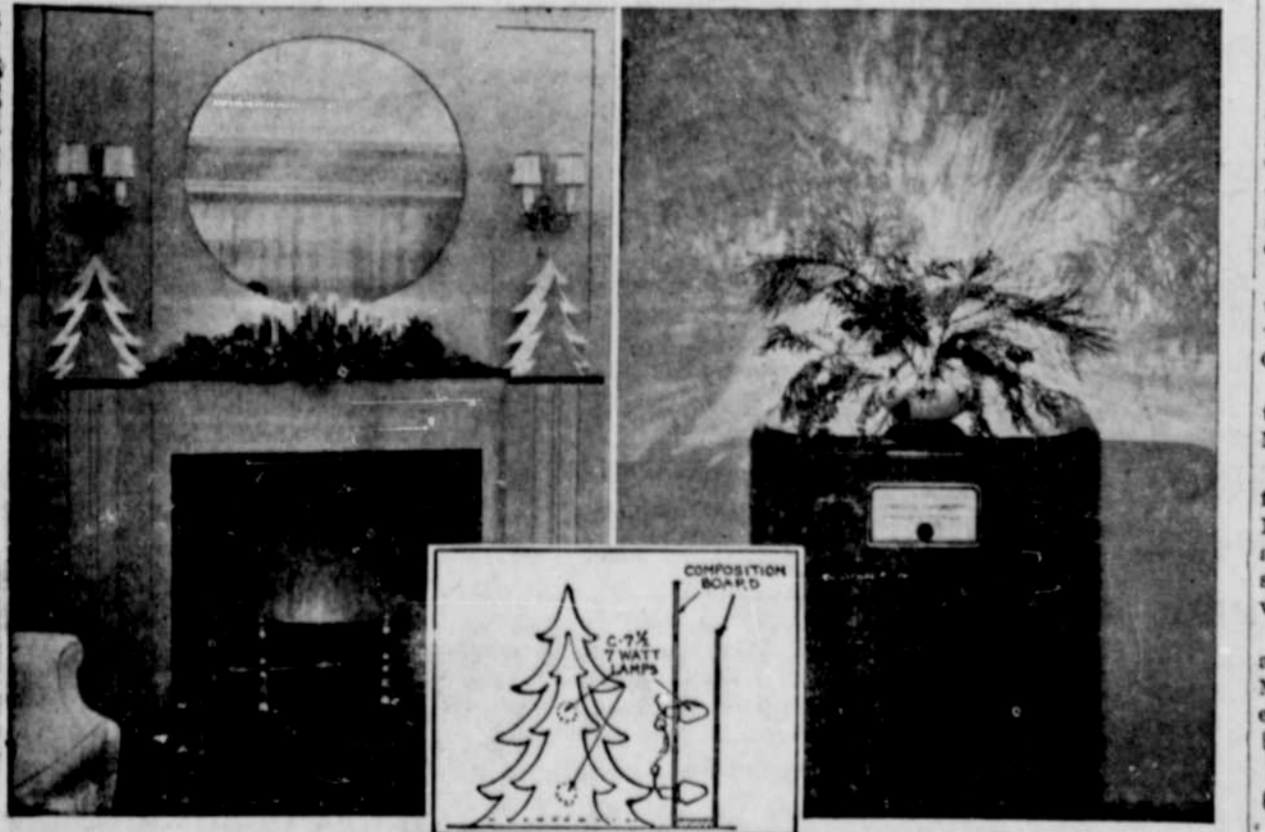
To simplify dinner service, pass pineapple cocktail from a tray in

the living room. Crisp salted potato sticks from a can on the emergency shelf make good nibbling with the cocktails.

Pine-Berry Cocktail
 1 cup canned unsweetened Hawaiian pineapple juice
 1 cup bottled cranberry juice
 ½ cup orange juice
 1 tablespoon lemon juice
 4 whole cloves
 1 stick of cinnamon

Combine fruit juices. Add cloves and cinnamon. Cover and chill in the refrigerator for one hour before serving. Strain and serve in cocktail glasses.
 Yield: 6 servings.

Yule Lighting Effects Indoors Can Be Novel



No End of Unique Effects Can Be Created to Give Indoor Christmas Lighting Individuality. All It Takes Is a Little Dreaming and Originality. Above Are Two Suggestions. Each Is More Fully Described Below.

By Joan Prentice

Many folks wrote me last year for recipes on how to create new and "different" Christmas lighting decorations for the living room. These enterprising women have... of the conventional tree and the wreath... a red bulb at the window.

This year, fortunately, numerous novelties using lights are on the market. But if a shopping tour doesn't quite "ring the bell" for the decorations you have in mind, perhaps the two effects shown above will do. At

least, they may give birth to a better idea of your own.

A simple yet effective treatment for the mantel may be made by surrounding the base of a standard candelier with holly or pine. In this instance, instead of ordinary Christmas tree lights, candle-like amber-tinted lamps, referred to as "T-3 1/4" by dealers, were used. The miniature trees at each end of the mantel consist of two planes cut from heavy white cardboard. The silhouette effect is obtained by burning colored C-7 1/2 lamps in the manner as shown in the above sketch.

The explosive lighting effect shown

in the other display back of the radio was achieved like this. The bowl of pine branches was made to "spill" backward toward the wall. Bright light from clear-glass T-3 1/4 Christmas lamps, either bunched in the bowl or concealed from view behind the bowl, created the lovely shadow patterns pictured. The shadows may be tinted by adding one or more larger lamps of contrasting color.

Try one or both of these decorative stunts and I'm sure the returns in enjoyment will repay your efforts many times over.

Smith et al, part of section 1, T1S R1W.
 Euth E. Westcott to Thomas Slocum et ux, lot 13, blk. O, Metzger Acres Tracts.
 Todd Gilmore et ux to Oliver G. Garrett et ux, part of sec. 24, T1S R1W.

NOT A "RUBBER STAMP" CONGRESS

It doesn't look as though this is going to be a "rubber stamp" Congress, despite the President's precedent-breaking re-election. The final election returns were hardly in before Congress refused to adjourn—in the face of strong White House pressure—and passed the Walter-Logan Act which is something the President definitely did not want.

BEAVER SOCIAL CLUB PARTY HELD

Beaver Chapter Social club card party held Saturday evening was well attended. There were fourteen tables of cards in play. Prizes were won by Mrs. Altishin and Mr. Bejer for "500"; Mrs. Archie Williams and Ben Shellis, pinochle. Guy Alexander won the door prize. Refreshments of sandwiches, cake and coffee were served.

fic accidents. These cards are suitable for display as small posters, or may be passed out to individuals or placed in cars.

Distribution throughout the state is being effected by police chiefs, sheriffs, city officials, safety council members, service clubs and other groups interested in the traffic safety campaign.

As a further means as stressing the need for safe driving and walking practices during the holiday season, these various groups are cooperating with Snell's office in conducting local campaigns which include radio talks and speeches before various groups, pointing out the dangers and suggesting ways of avoiding accidents.

A short movie trailer, featuring the voice of Secretary of State Snell and showing the dangers of careless pedestrian practices during the winter months, is now being shown in many of the Oregon theatres.

Principle efforts of the state safety campaign during December are directed toward cutting down pedestrian accidents and preventing other traffic crashes common during the holiday season, it was said.

NOTICE OF PAYMENT OF DIVIDENDS

In The Circuit Court Of The State Of Oregon For The County Of Washington
 Case No. 10,304

In The Matter of The Liquidation Of The Bank Of Beaverton, Beaverton, Oregon.

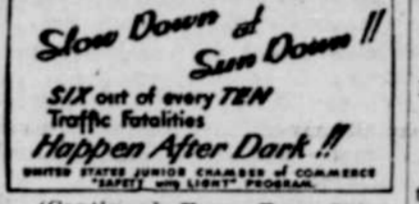
NOTICE IS HEREBY GIVEN that an order has been entered by the Circuit Court of the State of Oregon for the County of Washington authorizing, empowering, and directing the Superintendent of Banks to distribute an eighth and final dividend of 3.45% on all ordinary deposit claims filed and approved against the Commercial Department, and a sixth and final dividend of 14% on all ordinary deposit claims filed and approved against the Savings Department of the Bank of Beaverton, Beaverton, Oregon, up to and including May 10, 1940, said dividends to be paid on and after the 20th day of December, 1940.

That said order also directed the payment of a first, second, third, fourth, fifth, sixth, and seventh dividend on all approved claims filed against the Commercial Department from August 10, 1939, to and including May 10, 1940, and the payment of a first, second, third, fourth, and fifth dividend on all approved claims filed against the Savings Department from August 10, 1939, to and including May 10, 1940, which claims were filed subsequent to the payment of said dividends.

That said order directed that this notice be given by publication thereof in one issue of a newspaper of general circulation printed and published in Washington County, Oregon.

That the date of publication thereof is December 13, 1940.

A. A. ROGERS, Superintendent of Banks of the State Of Oregon in charge of the liquidation of Bank of Beaverton, Beaverton, Oregon. Adv. c-2



(Continued From Page 1)

25 miles an hour would cover 108 feet. In other words, a car traveling at this speed would constitute a hazard to an elderly pedestrian starting across an intersection while the car was still over 100 feet away.

In view of the fact that approximately three-fourths of the pedestrian fatalities in Oregon involve elderly persons, the difference in walking time of the two age groups also is significant, Snell said. The difference of approximately six seconds in the walking pace of persons 35 and those over 55 may well mean the difference between safety and danger on a busy thoroughfare, he declared.

During the first eleven months of this year, a total of 120 pedestrians died in traffic accidents in this state. Eighty percent of these fatalities occurred at night and in about 60 percent of the accidents, the pedestrian involved was committing some such unsafe action as crossing the street between intersections, walking on the wrong side of the highway, stepping out from between parked cars, starting across the street when approaching cars are so near for safety and improper walking at intersections.

The secretary of state's office has started distribution of pedestrian protection cards, pointing out the dangers of unsafe walking and driving practices as they apply to the person on foot, and urging both drivers and pedestrians to avoid those actions which may lead to traf-

Bethany-Cedar Mill

By Esther Sandstrom

Mr. and Mrs. Christ Phil, Mrs. Jennie Sandstrom and daughter Esther, Mr. and Mrs. George Struger and Charlie Struger attended the Danish Brotherhood card party in Portland Tuesday evening.

Mrs. Bert Fleskes entertained the Ladies Home Economics club with a luncheon at the Leedy Grange hall Monday afternoon.

Mr. and Mrs. Chris Phil attended the wedding of their niece Miss Margie Phil Sunday.

Mr. and Mrs. Arthur Olson and family visited at the home of Mrs. Jennie Sandstrom Sunday afternoon and evening. Art Olson has returned home from his visit in Seattle.

Mr. and Mrs. Alan Wilsenback and son visited at the home of Mr. and Mrs. A. Mead Saturday evening.

Real Estate Transfers

Jessie A. Warren to Christina Linke, part of section 30, T1S R5W.

Rudolph A. Steckbauer et ux to Gladys Haynes, 320 acres in section 30, T1S R5W.

Founders Corporation to Jack Meier, tracts in Metzger Acres.

Leonard Underwood et ux to Ella Many Miller, lot 189 in the Labewood Plat No. 1.

Portland Securities Co. to Edith A. Bruun, tract 124 in Bonny Slope.

Washington County to John Whitford et ux, 2 acres in Pando Creek Acre Tracts.

Fleischer Real Estate & Investment Co. to Kenneth R.

Free to Farmers
 ANOTHER BIG
JOHN DEERE DAY

SEE "Melody Comes to Town"
 ALL-STAR PRODUCTION

4
 KINTON CRANGE HALL
 Friday, Dec. 13, 1940
 Free - Admission - Free
 Program begins at 10:00 a.m.