

Beaverton Review

Issued Every Friday at Beaverton, Oregon,
THE REVIEW PUBLISHING CO.
FRIDAY, MARCH 21, 1930


Entered as second class matter December 9, 1922, at the postoffice at Beaverton, Oregon, under the Act of March 3, 1879.

J. H. Hulett .. Business Manager

HOME POINTERS

Fashion smiles on both the tall and the short this year. Peplums, tunics, boleros and capes favor the too tall woman, while flares, longer skirts, godets, geometrical cuts and draped pleats help to solve the problem of the short woman.

The silhouette being decidedly changed this season, hats, too, show the flaring lines. The youthful flares are variously developed and moderated for the tailored hat as well as for the dressier types.



How to Raise Poultry
By Dr. L. D. LeGear, V.S.
St. Louis, Mo.
Dr. LeGear is a graduate of the Ontario Veterinary College, 1892. Thirty-six years of veterinary practice on diseases of live stock and poultry. Extensive authority on poultry and stock raising. Nationally known poultry breeder. Head author and lecturer.

It seems fairly easy for most people to understand that horses, dogs and other animals whose young are born in the same way must be in prime condition at the time of mating or the offspring will likely be inferior. Consequently, every precaution is taken in the way of careful housing, feeding and conditioning to make sure that animals selected for breeding are in good physical condition. Peculiarly enough, the fact that the same care should be exercised with fowls whose young are hatched from eggs does not seem to be so generally understood. Possibly, the fact that any one egg looks so much like all others causes an instinctive deduction that such is the case. However that may be, the fact remains that the same need exists for proper care of breeding fowls as for any other form of animal life. In this article, therefore, I shall give briefly some of the most important points to be observed in the care of breeders.

As the first step working toward a stronger, more vigorous, high producing flock for the future, you will naturally select only such birds as are most likely to transmit these desirable qualities. They should be one year old or over, and of good size. You will choose only your finest specimens—birds of good form with vigor, perfect health, good individual records, and desirable ancestry. Breeders must be properly fed, housed and cared for if they are to provide eggs of sufficiently high fertility.

Not the least important consideration is proper feeding. As everyone knows, chickens can be fed certain materials in such proportions as to force a relatively high yield of eggs. This should not be done with breeders. What is wanted is quality—not quantity. During the breeding season, you want as many large, perfect, fertile hatching eggs as possible, eggs from which will come strong, vigorous chicks that will live, thrive and grow rapidly. If the breeding female is forced during the winter, she may come into the breeding season in a weakened condition so that her eggs will lack fertility and vitality.

Give breeding birds a good rest after the molt and do not force egg production during the winter. Keep them on what is practically a maintenance ration—a good laying ration with the protein bearing foods such as meat scraps that are reduced in quantity and green foods. Rely mostly on hard grains well buried in litter so they will have to scratch for it.

As the breeding season approaches, gradually go back to a laying ration by increasing from time to time the quantities of protein bearing materials which constitute a considerable part of mash feeds. Be content with a fair normal yield from breeders that are not forced and you are most likely to get eggs of high quality for hatching.

Keep plenty of water, grit, charcoal and shell before your breeders at all times.

Feed breeding birds liberally, but do not overfeed so that they become fat and lazy. Keep feeding down to what you can see keeps the fowls in good physical condition and promotes normal egg yield.

As a further guard against excessive fat as well as to insure necessary health and vigor, give your breeders plenty of exercise. Give them run of unrestricted range if possible, preferable where there is some form of green feed. Such a range also affords the opportunity to pick up bugs, worms and similar natural food materials which require exercise to get them.

See that houses are always well ventilated, clean and sanitary. Disinfect frequently with a good Dip & Disinfectant, to keep down lice, mites and disease germs. Remove droppings frequently and change litter often.

As for the type of house best suited for breeders, no special type is required. Any good house of the open front type that is weather tight and free from drafts or dampness will serve the purpose. Allow each bird at least 5 square feet of floor space, and I would prefer 10 or more. Better too much space than too little.

In extremely cold weather, guard against frozen combs and wattles. Adequate feeding is one precaution as properly fed birds have greater stamina. It is also necessary in unusually cold weather to have curtains over the front opening of houses; also to drop curtains before the roosts. In the case of males it is sometimes even desirable to put them in separate boxes or coops covered with burlap, since their large combs and wattles are more likely to freeze than those of the hen.

While it would be possible to elaborate considerably on the foregoing suggestions, I believe that enough information has been given to guide any intelligent poultry raiser who wants to get better results from his flock.

Baschul. "I hear that you have an artist friend."

Eager: "Yeah. Every time he comes to see me he draws the shades."



Our Classified Ads
Get results
Ask anyone
using them

Advertisements in this column 1 cent a word. Minimum charge 25c.

FOR SALE

Stop that cough with Brown's quick cure cough remedy. Brown's Beaverton Drug Store, the Mc Kesson's Service Store.

For Sale—1922 Ford delivery. Platform body; good running order; price, \$25. J. H. Hulett, Beaverton, Ore. adv. c-11-1f

Good, pure milk promotes health, especially at this time of year. Drink lots of it. Beaverton Sunnyside Dairy, A. Camenzind, proprietor. Adv. c 15-1f

For Sale—Six month old high grade Guernsey heifer. R. Hawley Watson at Jacob St. Beaverton, Oregon. c-11-1f

For Sale—Chester White Pigs, 6 weeks old. Wm. Kindorf, Beaverton, Route 3. p-16-17

For Sale—Vulcan Gas range, like new, for \$8, cash. Barbara Frohauer, Beaverton, Ore. adv. c-14

For Sale—First class haled hay; 2 miles south of Huber station on Livermore place. p-16-17

For Sale—Fresh young cow, W. F. Desinger. c-15

AUTOMOBILE ACCIDENTS ARE UNNECESSARY

In the opinion of L. H. Hutchcroft, statistician, Wisconsin board of health it is possible to operate automobiles without killing or seriously injuring anyone.

Mr. Hutchcroft points out that carelessness, criminal indifference, drunkenness and physical defects are responsible for a large part of our serious accidents.

Carelessness, indifference and drunkenness are legally punishable offenses. The fact that many motorists violate one or another of them, cause accidents and go unpunished, is a biting indictment of our traffic codes and their enforcement.

Physical defects could be offset by passing strict laws requiring periodical inspections of a motor car to determine its condition.

The most tragic thing about our yearly accident toll is that it represents an unnecessary waste of life. Accidents don't "just happen." There is generally some definite cause behind them that can be removed.

THE WINDOW SILL GARDEN

It is surprising how many window sill gardens one may find in a large city.

Not so long ago plain dirt, soil, earth—call it what you will—was on sale in New York City, at ten cents a basket. Although much of this may have been used for lawn or to replant house plants, an enormous quantity was undoubtedly used for the roof gardens and window sill boxes of that metropolis.

Anyone can grow such vegetables as lettuce or radish, or perhaps two or three tomato plants, in a tiny window sill garden. A concrete box or a wooden one will do, is filled with a bottom layer of gravel or pebbles for drainage, and a thick upper layer of rich earth.

If the latter is hard to secure, thoroughly mix some ashes with the common clay soil of the city, add a little fertilizer—and your garden is ready for the seed.

Loosen the earth, water when needed—and before you realize it, you will be opening the window and plucking lettuce or pulling fresh radish to place before some guest.

LOCAL NEWS

Mr. and Mrs. Robert Eagleton of Portland spent Sunday visiting friends and relatives in Beaverton.

Mrs. Mary Wilshire, who has been quite ill in Emanuel Hospital for the past two months, has so far recovered that she is able to be moved to her home in Ashland. She took a nurse with her.

Mr. and Mrs. W. H. Brenner of Minneapolis, Minn., visited last week in the home of Mrs. Brenner's brother, Mr. W. C. McKell. Mr. Brenner is president and receiver of the Minneapolis and St. Louis Railroad company.

For Sale—Used doors and sash with frames. Very reasonable. Beaverton 2425. J. E. Gilsdorf, Huber, Ore. c-14-1f

For Sale—1923 Buick Standard six touring car. Cheap, for quick sale. See at Beaverton Garage, Beaverton, Ore. c-16

For Sale—Rabbits. One doe rabbit is as profitable as ten hens. We offer you the pick of our pure bred pedigree rabbits at half price until May first. Medill Rabbit Farm, Beaverton. c-16-21

For Sale—Shadland oats for the spring seeding. Inquire of Chas. Billatin, one mile east of Beaverton on the Canyon road. p-16

WANTED

Wanted—Dressmaking, at reasonable prices. Ready-made fast color print housecoats. \$1.00 and \$1.25. Mrs. H. B. Brown, Rossi Apts. p-16

Wanted—Money. \$2000 on good 1st mortgage; farm or city property. Also other smaller amounts. Beaverton Finance Co. c-16

Wanted—Work, any kind. Have several men with families that need any kind of employment. Phone 5902. C. E. Hedge chairman, Relief Committee. Beaverton Chamber of Commerce c-16

FARM REMINDERS

Oak or cedar boards at least an inch thick are best for making window boxes as these are most resistant to decay. Even these are best painted or charred inside to keep out decay. To char a box paint the inside with kerosene and burn for a few minutes.

Too warm a hot bed will cause too rapid growth and weak plants. The best temperature is between 65 and 90 degrees, with the lower temperatures preferred.

Seeding flowers to be transplanted in flats are just right to move when the second and third flowers appear after the first set of two.

Seeding are usually set in flats from two to three inches apart as they may grow there until time to plant out in the open. The plants are toughened before setting out by leaving the sash off the cold frame for several days.

Lawn weeds, such as dandelion, when not too numerous, may be largely eliminated in early spring by using a caustic soda and boil again. Smaller or larger amounts are in proportion.

A general rule to follow in pruning roses is to keep thinning out old wood in favor of new, and pruning back enough to encourage these new shoots.

While there are many theories of telling the sex of the poultry at a day old for which high degrees of accuracy are claimed, most of them do not work out in practice. It is true, however, that flock owners who are perfectly familiar with the characteristics of the strain with which they are working can pick out the cockerels by the light color of the head and the fact that they have more yellow in the shanks, says the Oregon Experiment station.

Although many persons still do not believe that spontaneous combustion ever actually takes place, there is definite scientific proof of it, and many a farmer has learned it from the sad experience of watching his barn "go up in smoke." It is estimated, in fact, that farmers of the United States suffer a loss of nearly a million dollars annually from this cause. However, even this, says the Oregon Experiment station, is small compared with the loss in values through deteriorated quality and condition of grain or hay due to spontaneous heating which does not proceed to the ignition stage.

An \$100,000 mausoleum will be constructed at Klamath Falls in the near future.

About 2,000,000 baby chicks will be shipped out from Corvallis within next few months.

GRAY HAIR IS EASILY DARKENED

Tells How She Did It With a Home-Made Remedy

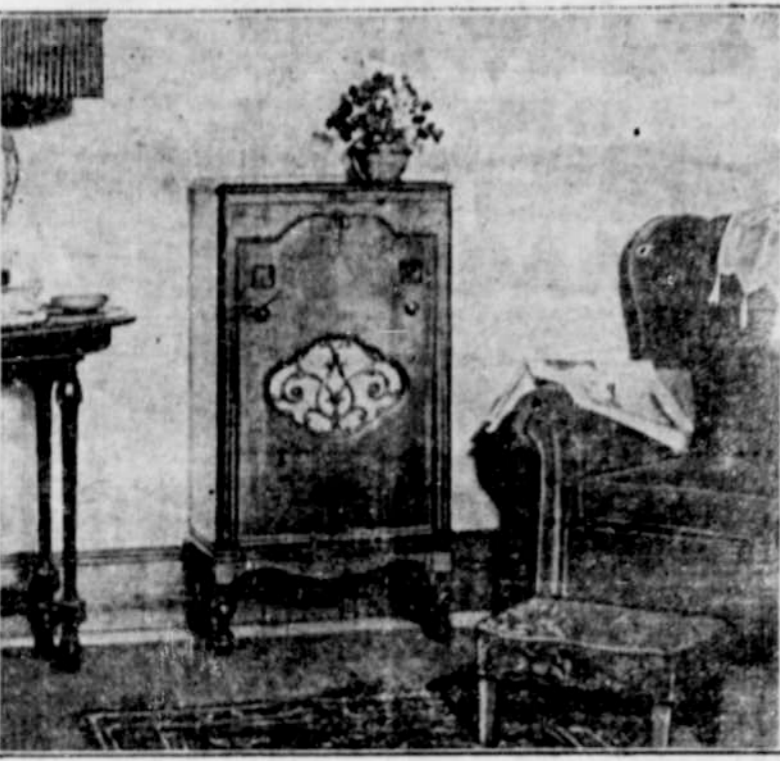
Mrs. E. J. Boots, a well-known resident of Buchanan County, Ia., who darkened her gray hair, made the following statement:

"Anyone can darken their gray or faded hair, and look twenty years younger with this simple remedy, which they can mix at home. To half a pint of water add 1 ounce of bay rum, one small box of Barbo Compound and 1/4 ounce of glycerine. These ingredients can be purchased at any drug store at very little cost. Apply to the hair every other day until the gray hair is darkened sufficiently. It does not color the scalp, is not greasy and does not rub off. It will make a gray-haired person look twenty years younger." no. 5.

NOTICE
The tax rolls for the 1929 taxes are now in the hands of J. W. Connel, Sheriff, for collection. The first half of the taxes are due and payable before May 6th, without interest.
It is urged that the tax payers of Washington County request their statements by mail, and also send their remittance by mail, at as tax payers will co-operate with early a date as convenient. If the tax payers will co-operate with this request, it will be greatly appreciated by the tax department, and will help to eliminate the last minute rush, and the inconvenience caused the tax payers by standing in line waiting their turn to be waited on. adv. c14-17

THE OLD TIME DANCE
KINTON GRANGE HALL
Thursday Eve., March 27, 1930
Come Along! Everybody Welcome!

SCREEN GRID GIVES FARM NEW RADIO



One Example of the Newest Battery Sets Which Offer Really Modern Radio to Unwired Homes.

"The real split between the requirements of rural and city listeners came with the introduction of the loud-speaker in place of head-phones," says E. A. Nicholas, Vice-President of the Radio-Victor Corporation of America. "Until then the usual battery radio set, especially when operated with dry cells, could serve both rural and city family equally well. With the loud-speaker there arose a demand for more power and better tone, with a decrease in operating cost, all of which led to socket power."

"Now radio engineers have turned to the requirements of the electrified home, eager to duplicate what has been achieved for city and town. Starting with current conservation as the ideal, they have evolved loud-speakers supplying ample volume and rich tone from a minimum input."

"The recent development of the screen-grid tube, with an amplification factor several times that of the usual three-element or standard battery tube, also has been a step in the direction of the ideal battery set. Indeed, with a single screen-grid tube replacing between two and three of

the usual tubes for the radio-frequency end, and, when also used as the detector, replacing the first audio tube a well, battery current consumption has been reduced to new low levels.

"These current economies, combined with the possibilities of greater volume and better tone through refined loud-speaker design, have made possible a battery-operated radio set about on a par with the average socket-power radio set, plus the advantage of a noiseless background for tuning distant stations."

"The combined engineering and research forces of the Radio Corporation of America have been at work on this new conception of an efficient battery-operated radio receiver. After many months of intensive effort, such Radiolas have been developed. These new sets are not simply revamped versions of old storage battery or dry battery radio sets. They are entirely new conceptions of battery-operated sets, designed to establish rural radio more on a par with metropolitan radio. In sensitivity, selectivity, simplicity, economy, tone and power, there is little more to ask."

OBSERVATION OF GAME LAWS ADDS TO FUR INCOME



E. J. Condon pointing out to Miss Betty Sheridan the flaws in a fur which has been improperly stretched and dried.

"That more careful observation of the game laws in any given section will result in increased income to the trappers is the basis of a recent statement made by the Sears-Robuck Agricultural Foundation. Most of the game laws not only protect wild life during the natural breeding season thereby assuring a supply of pelts for succeeding years, but further operate to the best interests of the trapper by prohibiting the wasteful taking of pelts at a time when fur quality is at a low point.

Furs taken from animals during the "unprime" season have a mangy, flat, lusterless appearance and are unfit for making first-class garments. In winter, those game animals will grow new underfur in preparation for the cold weather and their outer guard hair will take on its finest sheen.

Naturally the market price will be greatly increased.

"Proper preparation of pelts," declares E. J. Condon, director of the Foundation, "is another very important factor in the fur income. Pelts which have been carefully removed in the approved fashion and properly stretched and dried are at higher returns which much more than justify the slightly increased effort. It is the purpose of the First National Fur Show which will take place at Chicago the last two weeks in April to drive home the lesson of trapping within the legal season, and then to further extend the idea of properly skinning and packing the pelts, in order that trappers may receive the fullest possible profit from the sale of the furs they catch."

COUNTRY SLAB WOOD
Direct from Mill to Consumer
\$\$\$—YOU SAVE—\$\$\$
LIMITED AMOUNT ON HAND
ORDER YOUR SLAB EARLY
BEAVER WOOD COMPANY
Beaverton, Oregon
Phone 6702 216 Watson Street



PRICES START AT \$785
F. O. B. LANSING, MICH.

NEW DURANT BEAUTY

IN unsurpassed beauty... as well as in greater performance, comfort & value... the Entirely New Durant is unmatched in the field of low-priced sixes. From the new high radiator to the gracefully-rounded rear fenders, its handsome, dignified appearance is distinctively different from the conventional. Throughout the marvelously-engineered custom-type bodies there is modernistic smartness. » The fineness of detail in the Entirely New Durant is typical of the infinite care exercised in creating this World's Greatest AUTOMOBILE VALUE.

THE ENTIRELY NEW DURANT

Four-Forty Six Sixty Six Sixty-Six
PRICES START AT PRICES START AT PRICES START AT
\$ 5 4 0 \$ 6 3 5 \$ 9 3 5
F.O.B. Lansing, Mich. F.O.B. Lansing, Mich. F.O.B. Lansing, Mich.

Otto Erickson Co.
Washington County Distributors