

GLOBE ALBANY
May 1-2-
LON CHANEY
in
"Mr. WU"
Chaney's most masterful
Chinese characterization
Come early for seats

Overheating of Engine Harmful

It May Mean Some Mechanical Difficulty or Lack of Water.

Fever in a human being may indicate merely some digestive disturbance, or it may be the symptom of a serious, deep-seated disorder. An overheated automobile engine may mean only that you need more water in the radiator, or it may be the sign of some grave mechanical difficulty.

A great many motorists think that a fresh supply of water will always act as a cure for an overheated engine. This is not true when the overheating has progressed to the stage where it injures the cylinders, pistons and bearings.

What Overheating May Do.

For example, bearings will crack if subjected to tremendous heat. Heat causes oil to lose its lubricating power, and therefore great heat may cause frictional scoring of the cylinder walls and wearing of the pistons.

On the other hand, overheating may mean that your radiator is leaking water, that you have forgotten to fill it, or that it is clogged with sediment from dirty water. It may mean that you have been driving for a long distance in first or second speed, or that the fan belt is not at proper tension to give an adequate cooling draft.

If overheating occurs on the road, do not keep on driving, but stop and investigate. Filling up the cooling system with cold water after the engine has cooled somewhat will afford temporary relief. Try to find the cause of the overheating—whether it is entirely due to the cooling system, or whether it has some other mechanical basis.

If You Must Go On.

When it is absolutely necessary to continue the journey, overheat the engine with oil. This will cause it to give off volumes of smoke through the exhaust, but the additional oil will protect the cylinders and pistons. In case you cannot get either water or oil, and cannot find the cause of the overheating, telephone the nearest garage and wait for help to arrive.

As a general precaution, always keep the radiator of your car full of water, and make sure that it is water-tight.

Oil Will Make Steering Easier for Car Drivers

Steering has been made marvelously easy, but the driving feature still requires most of a car owner's energy—that is, he is continually busy at this particular job. An interesting thought in connection with this fact is that the point most frequently ignored in the lubrication of a car is the top of the steering wheel. Oil here means great deal of energy conservation when trying to put the car into a narrow parking space. It also serves to eliminate one of the most annoying groans or whistles in the machine.

W. L. WRIGHT FUNERAL DIRECTOR

D. C. ROSSMAN, Local Manager
Lady Assistant
All calls answered day or night
Phone 255
Halsey, Oregon

DELBERT STARR Funeral Director and Licensed Embalmer LADY ASSISTANT Brownsville, Oregon

TUSSING & TUSSING LAWYERS Halsey and Brownsville Oregon

NOTICE
of Appointment of Administrator
Notice is hereby given that the undersigned, by an order of the County Court of Linn County, Oregon, has been appointed as administrator of the estate of C. A. Waggener, deceased. All persons having claims against said estate are required to present them within six months from the date of this notice, with the proper vouchers, to the undersigned at his residence, about five miles southeast of Halsey, in Linn County, Oregon.
Dated this 31st day of March, 1927.
A. G. Waggener,
Administrator aforesaid.
Tussing & Tussing, Atty's for Admr.

Brunette Is Most Careful Car Driver

Fair men are more careful motor car drivers than dark men, but brunettes are much steadier than blonds at the steering wheel, it was declared by experts at a luncheon celebrating the opening of the fall automobile show in London recently.

Incidentally it was stated that one woman in four in England knows how to drive a motor car.

Passing on Blind Turns Very Dangerous Practice

Passing on blind turns! That's too common a trait of the average motorist, according to the safety bureau of the National Automobile club. Making up time, delay in passing the car ahead until too late for such passing, recklessness, taking a chance, all these factors enter into the problem of hazard.

A group of newspaper men set out to observe the other day a driver who was just ahead of them and who seemed to have a habit of attempting to pass at the wrong moment. Time after time this driver would slow up on the straight-away, only to speed up and pass the cars ahead when he came to a turn. There was something radically wrong with his driving complex. He might have intended to be careful, but his judgment brought him to grief.

Most accidents are caused by just such drivers, drivers who should not be allowed at the wheel of a motor car, as they are a menace to the safety of others. The innocent victim is usually the man swinging around a turn only to find a foolhardy pilot taking more than his share of the highway.

A forfeiture of a driver's license, a few days in jail, these are sentences that should be the reward of the man who takes a chance when in taking the chance he endangers the lives of others on the road.

Average Motorist Will Be Found Guilty of Neglecting Some Detail.

Most forgotten of all parts of a motor car when they are in good condition, and most blamed when they go wrong, tires plead mutely for a driver's attention.

If you should ask the average motorist whether he takes care of his tires, he would probably reply, "Of course"; and yet the chances are that he is neglectful of some detail of tire care.

Three Tire Factors.

There are only three factors which govern the cost per mile of tire operation. The first is the quality of the tire, the second, the conditions of operation, and the third, the care of the tire by the owner. In order to cut down the cost of tire mileage, all three factors must be regarded as important.

It is of no benefit to buy the best tires obtainable, put them on your car, and then forget about them. Watch for small cuts, bruises, pieces of metal or other foreign matter in your tires. Slight defects such as these, if unattended to, will cause serious trouble.

Proper inflation of tires is most important. Tires of any size are made to hold a definite amount of air under pressure. Any certain tire is designed to carry its prescribed weight only if it is properly inflated. Therefore, don't wait until your tires are obviously flat before re-inflating them, and don't trust to the "kick" method to tell you whether or not they are hard enough. Take a pressure reading once a week, whether your tires seem to need it or not. Underinflation flexes the tire side-walls too much, causing them to break down.

Care of Balloon Tires.

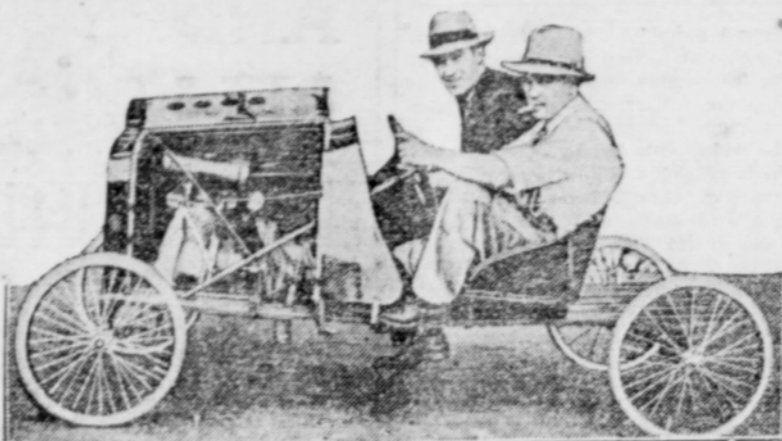
Underinflation in a balloon tire is not as noticeable as in cord tires, and for this reason, extra care must be taken in checking up on balloon tires. In this type of tire, it is not necessary to use such high pressure as in cord tires, but it is just as important to see that you have proper inflation. Balloon tires are also often over-inflated. This destroys much of their power to absorb road shocks.

Don't abuse your tires by driving in car tracks and deep ruts, or by scraping curbstones. And don't forget that proper care of your tires means a saving both of time and money.

Army Car Drivers Must Share Road With Others

Listed among the strict prohibitions observed by operators of United States army cars are: Smoking while driving, repeated sounding of horns, and holding back faster-moving cars. On dry, dusty roads the driver must run at reduced speed, so that no unnecessary dust will be raised to obscure the vision of other motorists. When meeting an approaching car, the soldier-chauffeur is ordered to give it no less than half the road. If the road is narrow or rough he must slow down to half speed. No operator is allowed to halt on a bridge, narrow road or bend of the road. These traffic orders have been drawn up to provide the greatest possible saving of life, time and motor equipment.

SMALL CAR MAY SOLVE TRAFFIC PROBLEM



This light car is used by business men of The Dalles because it can "wiggle" its way through heavy traffic. It is so light that it can be picked up, one end at a time and parked in a small place. It is capable of running at a speed of 12 miles an hour. This type of car, in the opinion of experts, may solve the traffic problem of the future.

Immortal Song

The popular song, "Home, Sweet Home," was first sung to the American public on November 12, 1823. The occasion was the New York production of the opera or melodrama, "Clari, the Maid of Milan."

Where Birds Gather

Bird lovers declare that there is no place in the United States where a close observer can see more varieties of birds in the course of a year than in and around Cape May on the Jersey coast.



With The Clock Turned Back

BY COURTNEY RYLEY COOPER COPYRIGHT, W. G. CHAPMAN

Charming story in which a man who had never known a real boyhood started out to learn the joys of that period of life. In order to turn the clock back he sought the advice and active aid of a regular boy. The two had some bang-up adventures, some thrills, and between them uncovered some genuine romance and a lot of fun.

Learn How to Turn the Clock Back Yourself by Reading This Serial in

The RURAL ENTERPRISE

beginning next week

We expect to print about a page of it each week, and if you have a friend in Oregon to whom you would like to make a gift worth a dollar or two, at a cost to you of only ten cents, give the dime and the address to the Enterprise and the story will be mailed.

School Notes

O. A. C., April 25—Pearl Pehrsson of Halsey, sophomore in vocational education, had a leading part in the annual women's stunt show, a major dramatic event, presented April 22 and 23. Each sorority and woman's organization had 30 minutes to give its number. Ten organizations take part each year.

Miss Pehrsson was in the number presented by the Alpha Delta Pi sorority. A silver loving cup given by the associated women students was first place award and there were cash prizes for second and third place.

Forrest Pickett.

The automobile causes so many more deaths than the pistol that it may be classed as a deadly weapon. Here in Halsey the baseball bat is aspiring for the honor. Leland Pugh got a swipe from one last week that cut his temple open and sent him to a doctor and George Workinger's son Kenneth had his mouth almost doubled in size for a while by a blow from one.

Irma, daughter of Dwight Smith, fell and broke an arm.

A son of W. J. McAllister was kicked by a cranky Ford he was cranking and it broke his arm.

All these helped to relieve the monotony of Dr. Marks' life.

Several hundred Oregon school teachers are expected to be among the 2,000 students for the two university summer sessions this year.

Thirty-three education courses will be offered, including provisions for advanced and graduate study. Four women and fourteen men have been engaged to teach education, and, in all, there will be 100 professors on the summer faculty teaching 110 courses.

Simple Arrangement to Gain Extra Gas Mileage

If you car is fitted with an automatic windshield wiper of the vacuum operated type you can fit an auxiliary air inlet to get more mileage out of your gasoline on long runs. Connect a petcock in the rubber hose line lead-



More Mileage on Long Runs.

ing to the wiper and on long runs you can pull the end of the hose off the wiper and allow extra air into the manifold by adjusting the petcock. The illustration shows the arrangement.—Popular Science Monthly.

AUTOMOBILE HINTS

A car that will go eighty miles an hour shouldn't.

Too high a temperature will dry out the rubber in tires, while too low will stiffen it.

Do not use a nonskid tire on one rear wheel and a plain tread on the other wheel.

An emergency cotter pin can be made from a common hair pin by a few twists of the pliers.

A man never realizes just what "dumbness" means until he is driving on a country road and meets a cow.

RURAL ENTERPRISE

Published every Thursday at Halsey, Oregon, by Wm. H. Wheeler.

\$1 a year in advance Arrearages, 12 1-2c a month. Stops when time expires unless continuance is ordered.

Advertising, 20c an inch; no discount for time or space; no charge for composition or changes. Announcements of entertainments, food sales, etc., whose object is to raise money, charged at regular advertising rates. Announcements of religious meetings, not exceeding four inches, free if copy is received before Tuesday.

Stage and Railroad Time

Effective April 17, 1927

Brownsville Halsey stage leaves Halsey 8:25 p. m. 4:25 p. m. 12:25 p. m.

Arrives Brownsville

8:50 p. m. 4:50 p. m. 12:50 p. m.

Leaves Brownsville

11:15 a. m. 3:20 p. m. 9:00 p. m.

Arrives Halsey

11:40 a. m. 3:50 p. m. 9:30 p. m.

Upon request from passengers desiring to use train No. 16, leaving Halsey at 6:10 a. m., stage will call at Brownsville in time to protect this connection. Otherwise no protection.

Southern Pacific trains arrive going north

3:50, 6:10, 11:49 a. m. and 4:11 p. m.

Going south

12:21, 8:23 and 11:19 p. m.

All trains except that going north at 4:11 p. m. stop only when flagged.

Special Notices

5c a Line Weekly

Sand or gravel can be had cheap at the plant 2 miles east, on the Brownsville road, after it opens up in May.

For Sale—Standard make of piano in vicinity will be sacrificed. Must sell at once; \$10 monthly. Write Tallman Piano store, Salem.

We do not intend to dote out in homeopathic doses the story, "The Clock Turned Back," which begins in next week's Enterprise. Many people fail to get full enjoyment from a serial chopped into columns and half columns and dished up one piece at a time.

At the Study club meeting a week ago today at the Wells home fifteen members were present. The lesson, on "God's Great Women and the Bible in Literature," was given by Mrs. Merwyn Van Nice. Mrs. Cummings, delegate, reported the district meeting at Corvallis. Mrs. C. P. Stafford, who is an active member of the philharmonic club at Salem, gave a review of "Madame Butterfly" and sang "Some Fine Day" from that opera. Mrs. C. P. Moody was chosen delegate to the state convention at Bend, May 23 to 27. Genevieve assisted Mrs. Wells in serving refreshments. Next meeting May 5, with Mrs. Gertrude Smith.

PIANO FOR SALE

in Halsey vicinity. Beautiful instrument; a bargain; pay \$10 a month. For particulars address Western Piano Brokerage Co., 413 North Boren avenue, Seattle.

Used Piano Must be sold

Will sacrifice fine used piano if taken immediately. Will give very easy terms to responsible party. For full particulars address Portland Music Co., 227 Sixth street, Portland, Oregon.

Buy food insurance NOW Next autumn will be TOO LATE

Start your baby chicks on ALBERS' CHICK STARTER or LILLY'S LIFE INSURANCE FEED

It's cooked with dried sweet milk and cod liver oil for better results We carry a full line of each.

T. J. SKIRVIN SEED Co., Halsey and Harrisburg

For future success with your flock of chickens use

TRIANGLE

Developing Mashers and Scratches

Complete stock always on hand.

FLEECE TWINE used and new WOOL SACKS

O. W. FRUM