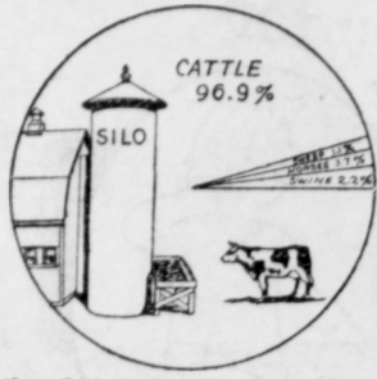


Eat Way Through Corn Acres



(Sears-Roebuck Agricultural Foundation)

Eating their way through almost four million acres of canned corn in the form of silage is the job American cattle, mostly dairy cows, accomplish every year, according to the Sears-Roebuck Agricultural Foundation. It has been estimated that they eat 96.8% of the vast amount of silage while the small amount left, swine consume 2.2%, horses, 1.7% and sheep 1.1%. Very little silage is fed to poultry. All silage made on the farm is consumed on the farm because it is not a product that can be handled successfully through commercial channels.

1 to 1 1/2 More Miles Per Gallon by Test

—gear friction reduced to new low point



An entirely new type of lubricant. Actual driving tests show that Alemite Transmission Lubricant makes your car 15% to 20% freer running. Adds 1 to 1 1/2 miles per gallon of gas; due to reduced friction.

Let us fill your gears today. Try the new

ALEMITE

Transmission Lubricant
ARROW GARAGE,
HALSEY

W. L. WRIGHT FUNERAL DIRECTOR

D. C. ROSSMAN, Local Manager
Lady Assistant
All calls answered day or night
Phone 255
Halsey, Oregon

TUSSING & TUSSING

LAWYERS
Halsey and Brownsville
Oregon

Albany Creamery Association

Manufacturers of
LINN BUTTER
and Buyers of Eggs
A Farmers' Co-operative Creamery

DELBERT STARR
Funeral Director and Licensed Embalmer
LADY ASSISTANT
Brownsville, Oregon

A Modern Barber Shop
Laundry sent Tuesdays
Agency Hub Cleaning Works
ABE'S PLACE

NOTICE
of Hearing of Final Account
Notice is hereby given that the final account of B. M. Bond as administrator of the estate of Amanda Sezroll, deceased, has been filed in the County Court of Linn County, State of Oregon, and that the 10th day of January, 1927, at the hour of 10 a. m., has been duly appointed by said court, for the hearing of objections to said final account and the settlement thereof, at which time any person interested in said estate may appear and file objections thereto in writing and contest the same. Dated and first published December 9th, 1926.
B. M. Bond,
Administrator of the Estate.
Tussing & Tussing, Atty. for Adm.

Albany Directory

ALBANY BAKING CO.
405 West First
BUTTER-NUT BREAD

Albany Floral Co. Cut flowers and plants. Floral art for every and all occasions. Flower phone 458-7.

ALBANY STATE BANK—We invite your business. Savings and commercial accounts. Capital, surplus, undivided profits, \$100,000.

Byerley Motor Co.—Oakland-Pontiac agency. Used cars bought and sold. When in the market for new cars see us first. 219 W. Second St. Albany. Phone 643

DUPLEX GARAGE.
129 E. Second. Bert Adams, Prop. Storage, Washing, Polishing, General lubricating day and night service.

EASTBURN'S GROCERY
4th and Lyons Street
The place to buy good groceries at the right price. On the corner, plenty of room to park. Albany.

Elite Cafeteria and confectionery
Home cooking. Pleasant surroundings. Courteous, efficient service. We make our own candies.
W. S. DUNCAN

FORD SALES AND SERVICE
Tires and accessories
Repairs
KIRK-POLLAK MOTOR CO.

Fortmiller Furniture Co., furniture, rugs, linoleum, stoves ranges. Funeral directors. 437-433 west First street, Albany, Oregon.

FINTEL WRECKING CO.
436 West 1st
Used Parts for all cars

HIDES and FURS TANNED to Order. Cash paid for Hides and Furs. Q. B. Ogden, East Water Street

HOLMAN & JACKSON
Grocery—Bakery
Everything in the line of oats
Opposite Postoffice

HUB Confectionery (Ettawa store)
No. 6 1/2 Noon lunches. Home-made candy and ice cream. First street, next door to Blain Clothing Co.

IMPERIAL CAFE, 209 W. First
Harold G. Murphy Prop.
Phone 665
WE NEVER CLOSE

MAGNETO ELECTRIC CO.
Investigate the new Prestolite Battery prices before buying.

MARINELLO PARLORS
(A beauty aid for every need)
St. Francis Hotel, Winifred Rees, Prop.

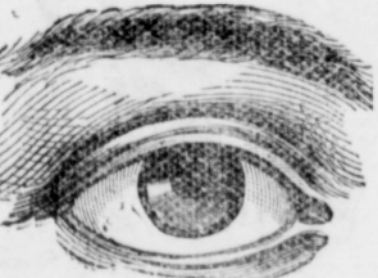
ROSCOE AMES HARDWARE
The Winchester Store

SEARS GROCERY
1st and Perry W. O. Church, Mgr.
Buy where you Dollar buys more

When in Albany call at the SPECIALTY SHOPPI
318 West Second st., for hemstitching, stamped goods, fancy work, etc.

If you enjoy a good meal And know a good meal when you get it You'll be back for you'll not forget it. Our aim is to please. League lunch Tuesdays

PARAGON CAFE
GEO. M. GILCHRIST
ALBANY



ARE YOUR CHILDREN'S EYES READY FOR SCHOOL WORK?

That children may develop physically, co-ordinately with the pressure of the school work, their eyes must have immediate attention.

It is very important that children see clearly and comfortably. You will find that the correction of imperfect vision will reduce nervousness and crossness, and bring about willingness to do and new ambition to accomplish in study.

Unusual advantages are offered here. Nothing is spared that your children may see as nature intended them to.

Do not neglect your children's eyes. Take advantage of our special facilities and give your children the fullest opportunity to do their best.

Meade & Albro
Optometrists
ALBANY OREGON.

Help Her Keep Her Feet!



The Armenian earthquake has left 80,000 people homeless. Near East Relief needs \$1,000,000 to meet this emergency.

News (Continued from first page)

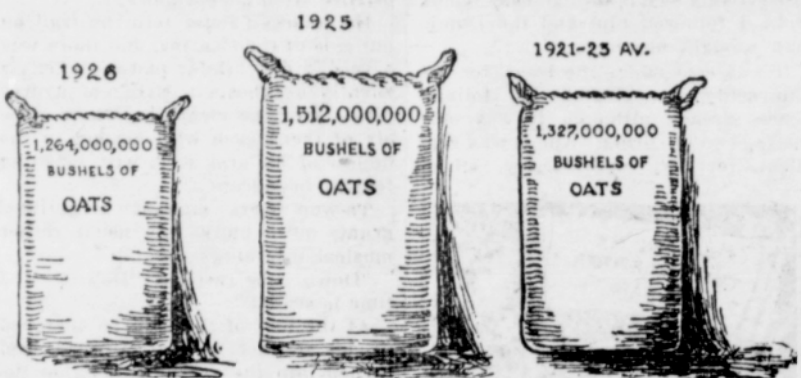
divided into three crews, gave the telephone line its annual overhauling Tuesday and Wednesday. Charles Nichols and George Chandler and family were Albany visitors Wednesday of last week. A. L. Knighten and Dean

Bilyeu of Albany were Pine Grove visitors Sunday.

N. E. Chandler and wife were at the county seat Monday.

They are enjoying a new radio at N. E. Chandler's.

Gasoline Runs Oats Out of Gas



GASOLINE has oats on the run as a source of power on the farm, according to the Sears-Roebuck Agricultural Foundation. The increase in tractor farming and the decline in farm horses of 3,624,000 head from 1920 to 1925 has greatly reduced the demand for oats. The crop this year will be only 1,264,000,000 bushels, according to the latest official estimates, the Foundation states. Last year the crop totaled 1,512,000,000 bushels, while the five-year average is only 1,227,000,000 bushels. About 45,945,000 acres were devoted to oats this

year, and it is expected that the yield will be around 27.5 bushels per acre. Like corn, most of the oats is consumed by live stock. Very little of it is sold and not more than 2 per cent of the crop is exported, as a rule. Since the demand as a horse feed has declined, a larger percentage is being consumed by hogs and cattle. The carry-over from the 1925 crop was large because of the bumper crop last year and due to the general scarcity of live stock, so in spite of the short crop this year, there will be ample to meet the demand.

- Highway Garage -
Waldo Anderson and Son, Props.
- Day and Night Storage -

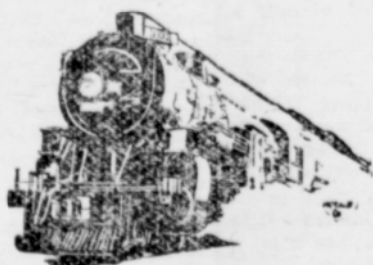
Atwater-Kent
Stromberg
Federal
Kolster
Radios
1st and Baker Sts.
ALBANY OREGON

FARM LOANS

at lowest rate of interest.
Real Estate Insurance
Prompt service. courteous treatment.
WM' BAIN, Room 5, First Savings Bank building, Albany

Rural Enterprise

1 year for 1 dollar



\$3.90

to Portland and return

For use Friday, Saturday and Sunday, return limit Tuesday. 15-day roundtrip tickets on sale daily at slightly higher fare permit stopovers. Convenient trains going and returning.

Save 10% to 30% — buy roundtrip tickets TRAVEL IN COMFORT AND SAFETY

Southern Pacific
C. P. MOODY, Agent

SCHOOLS—(Continued from first page)

at night by the city police, to prevent vandalism by the "Blue Devils" and the "Hell Cats."

Last Monday 400 Eugene high students held a mass meeting to pledge loyalty to the school board, the principal and the faculty, and the devils and cats seem to be a pretty small minority.

The Portland Journal had such success in introducing Santa Claus and his sleigh and reindeer team in Portland last holiday season as an advertising stunt that it has them traveling through the valley this year. Tuesday was their day at Albany. Schools were closed throughout Linn county and there were more outsiders at the county eat than ever before in its history, it is said. Little tots hobnobbed with Santa and patted the deer or sat on their backs and "a good time was had by all." Halsey was well represented.

The Parent-Teachers' association will meet at the schoolhouse, at 7:15 Friday evening. Everybody interested in the schools should attend. The organization of boys' and girls' industrial clubs will be reported upon and the report of the delegation to the state convention, postponed from the last meeting, is to be presented.

More boys than we thought were jarred last week by what we said about juvenile rudeness, if all who squealed were hit still, they are few. Halsey young people in general have the instincts of polite ladies and gentlemen.

Halsey High School Notes

(High School Reporter)

The boys' basketball team of Halsey played the boys' team of Mill City Friday evening and came home to report a score of 44 to 7 in favor of Mill City.

The boys' next basketball game will be in Halsey this week Friday evening, against Tangent.

Mary Smith was absent from school one day last week.

Mrs. Coleman, one of the grade teachers, has been quite ill for the last week.

The senior class is working on a play which will be given some time during the Christmas season.

Thursday and Friday of this week is the time for the second six-weeks examination.

RURAL ENTERPRISE

Published every Thursday at Halsey, Oregon, by Wm. H. Wheeler.

\$1 a year in advance. Arrearages, 12 1/2% a month. Stops when time expires unless continuance is ordered. Advertising, 20c an inch; no discount for time or space; no charge for composition or changes. Announcements of entertainments, food sales, etc., whose object is to raise money, charged at regular advertising rates. Announcements of religious meetings, not exceeding four inches, free if copy is received before Tuesday.

Special Notices 5c a Line a Week

Comedy-Drama—4 acts, 4 specials, by senior class, Brownsville high school, Tuesday evening, Dec. 10. Big Legion dance after show.

Let the Enterprise office do your printing.

Old-style Oliver typewriter; perfect condition; \$15. Inquire this office.

Select your Christmas cards at the drugstore early, when there will be time to have your name printed on them.

John Standish left last night for Taft, Cal., to work for the News-Tribune advertising service of Los Angeles.

B. M. Miller and wife and Mrs. Eliza Brandon attended an all-day Methodist meeting at Eugene Tuesday.

Young W. fe Afraid to Eat Anything

"I was afraid to eat because I always had stomach trouble afterwards. Since taking Adlerika I can eat and feel fine." (signed) Mrs. A. Howard. ONE spoonful Adlerika removes GAS and often brings surprising relief to the stomach. Stops that full, bloated feeling. Removes old waste matter from intestines which you never thought was in your system. Excellent for obstinate constipation.

Send the Enterprise to an absent Halseyite friend.

One year for

\$1

It will be li weekly letter from home.



"A TREASURE CHEST"

That is what a woman said recently upon opening a box of our assorted candies. What woman doesn't regard candy as a treasure? It is really more than that, too; it is an absolute necessity, supplying a food want in a manner no other article of diet can. Ours is the best to be had.

Clark's Confectionery



For Your Pulletts---

Triangle Egg Mash

For Your Older Hens---

Kerr's Egg Producer

These Mashs Give Results

O. W. FRUM

Good Luck EGG MASH

Best in quality, lowest in price. Ask our many satisfied users. Our Oregon Maid Dairy feed you will find will meet with equally as good success as our Good Luck Egg Mash. This excellent 20 per cent Protien dairy feed has within two months become one of the leading sellers from our Eugene store. Stacked on the floor beside three leading commercial feeds it is now going five sacks to one of a. t. the others combined. The proof of the pudding is in the eating.

Give it a Trial

T. J. Skirvin Seed