

A little chunk of Gravelly helps the Quartermaster Officer through many a hard day.



### He Will Welcome a pouch of Real GRAVELLY Chewing Plug

Any gift from the folks back home means a lot to the boy. When you send him tobacco, let it be good tobacco—tobacco worth sending all that long way—the flat, compressed plug of Real Gravelly.

Give any man a chew of Real Gravelly Plug, and he will tell you that's the kind to send. Send the best!

Ordinary plug is false economy. It costs less per week to chew Real Gravelly, because a small chew of it lasts a long while.

If you smoke a pipe, slice Gravelly with your knife and add a little to your smoking tobacco. It will give flavor—improve your smoke.

SEND YOUR FRIEND IN THE U. S. SERVICE A POUCH OF GRAVELLY

Dealers all around here carry it in 10c pouches. A 3c stamp will put it into his hands in any Training Camp or Seaport of the U. S. A. Even "over there" a 3c stamp will take it to him.

P. B. GRAVELLY TOBACCO COMPANY, Danville, Va.

The Patent Pouch keeps it Fresh and Clean and Good —It is not Real Gravelly without this Protection Seal

Established 1831



#### S. P. Schedule for Halsey

##### SOUTH BOUND

No. 23, due 11:10 a. m., flag stop  
No. 15, due 12:48 p. m., flag stop  
No. 17, due 5:50 p. m., reg. stop

##### NORTH BOUND

No. 18, due 11:41 a. m., reg. stop  
No. 24, due 2:34 p. m., flag stop  
No. 14, due 6:05 p. m., flag stop

#### Church Announcements

##### FIRST METHODIST EPISCOPAL CHURCH.

Preaching every Sunday at 11 a. m. and 7:30 p. m. Sunday School at 10. Prayer meeting Thursdays at 7 p. m. Ladies Aid Wednesdays at 1:30. Class meeting first Sunday of each month at 12 m. Bible Study Class every Wednesday at 7:30 p. m.  
Rev. J. D. Cain, pastor.

##### CHURCH OF CHRIST

Bible school at 10 a. m. Preaching service at 11 a. m. Christian Endeavor at 6:30 p. m. Preaching service at 7:30 p. m. Teachers' Training, Sat., 6:45 p. m. Choir practice Sat. p. m. at 8. Pre-prayer service Sunday p. m. at 6:45. Ladies' Aid Thursday p. m.

Rev. Kenneth Hendricks, Pastor.

Remember, you can get the Oregon Farmer for one year absolutely free by paying a year in advance for the Enterprise.

#### Teachers' Examinations

Notice is hereby given that the County Superintendent of Linn County, Oregon, will hold the regular examination of applicants for State Certificates at Albany, as follows:

Commencing Wednesday, June 26, 1918, at 9:00 o'clock a. m., and continuing until Saturday, June 29, 1918, at 4:00 o'clock p. m.

Wednesday Forenoon  
U. S. History, Writing (Penmanship), Music, Drawing.

Wednesday Afternoon  
Physiology, Reading, Manual Training, Composition, Domestic Science, Methods in Reading, Course of Study for Drawing, Methods in Arithmetic.

Thursday Forenoon  
Arithmetic, History of Education, Psychology, Methods in Geography, Mechanical Drawing, Domestic Art, Course of Study for Domestic Art.

Thursday Afternoon  
Grammar, Geography, Stenography, American Literature, Physics, Typewriting, Methods in Language, Thesis for Primary Certificate.

Friday Forenoon  
Theory and Practice, Orthography (Spelling), Physical Geography, English Literature, Chemistry, Physics, Culture.

Friday Afternoon  
School Law, Geology, Algebra, Civil Government.

Saturday Forenoon  
Geometry, Botany.

Saturday Afternoon  
General History, Bookkeeping.  
J. A. CHURCHILL,  
Superintendent of Public Instruction.

#### C. P. Stafford

Notary Public

Office at Telephone Office

#### Amor A. Tussing

LAWYER AND NOTARY

BROWNSVILLE, OREGON

#### Notice

The federal food administration for Oregon and Linn county calls upon every household to surrender to their local retail stores at once whatever white wheat flour they might have in their possession. Flour will be received in any quantity even if the sacks are broken and partly used.

The state of Oregon is going on a wheatless basis, beginning with June 1, and every citizen is called upon to do his utmost to assist our government. This is a time when it is no question of how little we can do, but of how much we can do to assist our nation in this great struggle for worldwide democracy.

Alfred C. Schmitt,  
Co. Food Administrator.

In order that every man between the ages of 18 and 36, either married or single, may have the opportunity of enlisting in the United States Marine Corps, every postmaster in Oregon has been authorized to examine, accept and transfer men for this excellent branch of service. Registered and unregistered men between the above mentioned ages who are desirous of enlisting may do so. Your postmaster will gladly assist you in obtaining your release from the local board and will also explain this splendid branch of service. Ask him today.

#### Whooping Cough

In this disease it is important that the cough be kept loose and expectoration easy, which can be done by giving Chamberlain's Cough Remedy. Mrs. P. H. Martin, Peru, Ind., writes: "My two daughters had whooping cough. I gave them Chamberlain's Cough Remedy and it worked like a charm."

Try a sandwich and a cup of coffee at the Halsey Confectionery.

#### Catarrh Cannot Be Cured

with LOCAL APPLICATIONS, as they cannot reach the seat of the disease. Catarrh is a local disease, greatly influenced by constitutional conditions, and in order to cure it you must take an internal remedy. Hall's Catarrh Cure is taken internally and acts thru the blood on the mucous surfaces of the system. Hall's Catarrh Cure was prescribed by one of the best physicians in this country for years. It is composed of some of the best tonics known, combined with some of the best blood purifiers. The perfect combination of the ingredients in Hall's Catarrh Cure is what produces such wonderful results in catarrhal conditions. Send for testimonials, free. P. J. CHENEY & CO., Props., Toledo, O. All Druggists, 75c.  
Hall's Family Pills for constipation.

#### Barber Shop

All tools "Sanitary Sterilized"

#### E. C. MILLER

#### Wright & Poole

#### UNDERTAKING

EMBALMING

Phone 184 Harrisburg Oregon.  
Frank Kirk, Representative  
Halsey, Ore. Phone 166

#### WM. S. RISLEY

Attorney and Counsellor at Law

I. O. O. F. BUILDING

ALBANY OREGON

Please return my tools that you borrowed.  
J. W. Rector.

## WHEAT CRISIS FORCES CHANGES IN RULES

Households, Eating Houses and Bakers Must Decrease Use of Wheat.

Urgent military necessities of the United States and the Allies has forced a more drastic restriction in the wheat conservation program. Coupled with an earnest appeal to all individuals, households, public eating places and bakers of bread and pastries for their co-operation and support, Herbert C. Hoover has issued a new set of rules designed to further reduce wheat consumption in this country until the next harvest.

These rules and Mr. Hoover's personal appeal are given out through Mr. W. B. Ayer, Federal Food Administrator for Oregon, in the following message:

"If we are to furnish the Allies with the necessary proportion of wheat to maintain their war bread from now until the next harvest (and this is a military necessity) we must reduce our monthly consumption to twenty-one million bushels a month as against our normal consumption of about forty-two million bushels or fifty per cent of our normal consumption, reserving a margin for distribution to the army and for special cases, leaving for general consumption approximately one and one-half pounds of wheat products weekly per person. Many of our consumers are dependent upon baker's bread. Such bread must be durable and therefore requires a larger proportion of wheat products than cereal breads baked in the home.

The well-to-do in our population can make greater sacrifices in the consumption of wheat products than can the poor. In addition our population in the agricultural districts, where the substitute cereals are abundant, are more skilled in the preparation of breads from these other cereals than the crowded city and industrial populations. With improved transportation conditions we now have available a surplus of potatoes. We also have in the spring months a surplus of milk and we have ample corn and oats for human consumption. The drain on rye and barley as substitutes has already greatly exhausted the supply of these grains.

"To effect the needed saving of wheat we are wholly dependent upon the voluntary assistance of the American people and we ask that the following rules shall be observed:

First—Householders to use not to exceed a total of one and one-half pounds per week of wheat products per person. This means not more than one and three-fourths pounds of victory bread containing the required percentage of substitutes and about one-half pound of cooking flour, macaroni, crackers, pastry, pies, cakes, wheat breakfast cereals all combined.

Second—Public eating places and clubs to observe two wheatless days per week, Monday and Wednesday, as at present, and in addition thereto not to serve in the aggregate a total of more breadstuffs, macaroni, crackers, pastry, pies, cakes, and wheat breakfast cereals containing a total of more than two ounces of wheat flour to any one guest at any one meal. NO WHEAT PRODUCTS TO BE SERVED UNLESS SPECIALLY ORDERED. Public eating establishments not to buy more than six pounds of wheat products per month per guest, thus conforming with limitations requested of the householders.

Third—Retailers to sell not more than one-eighth of a barrel of flour to any town consumer at any one time and not more than one-quarter of a barrel to any country customer at any one time and in no case to sell wheat products without the sale of an equal weight of other cereals.

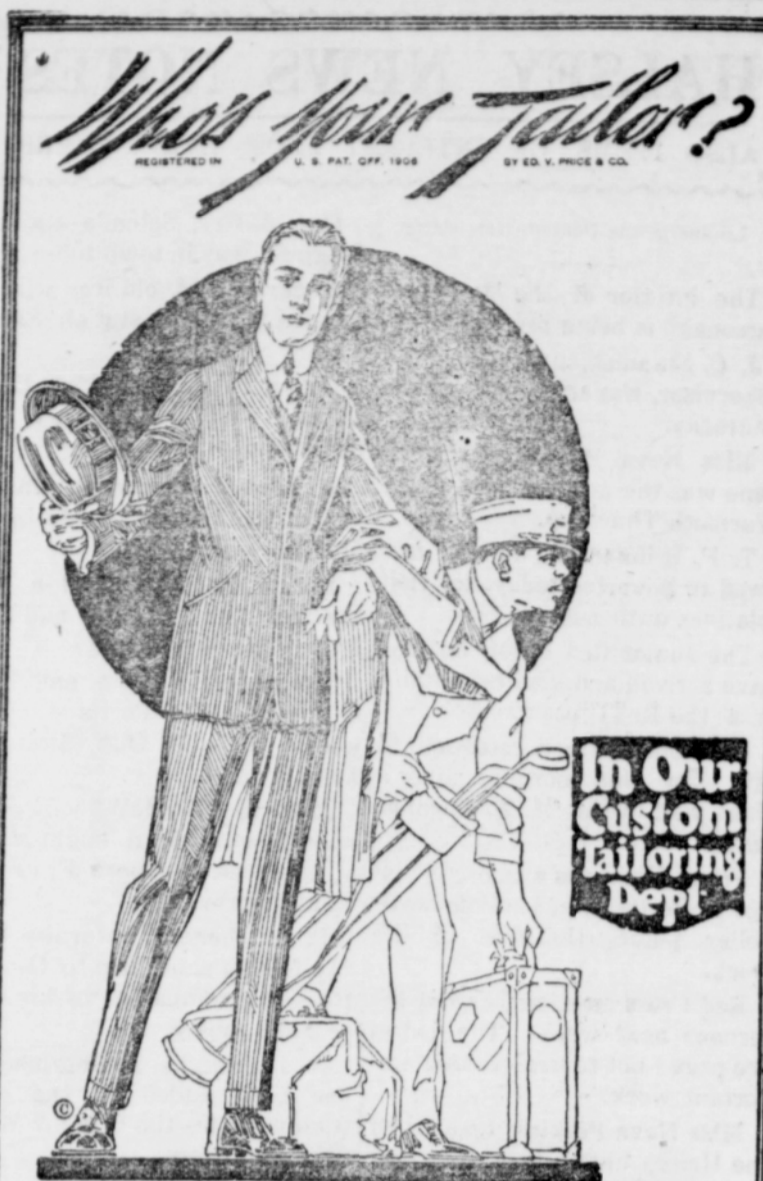
Fourth—We ask the bakers and grocers to reduce the volume of victory bread—sold by delivery of a three-quarters pound loaf where one pound was sold before and corresponding proportions in other weights. We also ask bakers not to increase the amount of their wheat flour purchases beyond seventy per cent of the average monthly amount purchased in the four months prior to March first.

Fifth—Manufacturers using wheat products for non-food purposes should cease such use entirely.

Sixth—There is no limit upon the use of other cereal flours and meals, such as corn, barley, buckwheat, potato flour, et cetera. Many thousands of families throughout the land are now using no wheat products whatever except a very small amount for cooking purposes, and are doing so in perfect health and satisfaction.

There is no reason why all of the American people who are able to cook in their own households cannot subsist perfectly well with the use of less wheat products than the one and one-half pounds a week allowed. We specially ask the well-to-do households in the country to follow this additional programme so that we may provide the necessary marginal supplies for those parts of the community less able to adapt themselves to so large a proportion of substitutes and in order that we shall be able to make the wheat exports that are absolutely demanded of us to maintain the civil population and soldiers of the Allies and our own army.

"With the arrival of the new harvest we should be able to relax such restrictions, but until then we ask for the necessary patience, sacrifice, and co-operation of the distribution trades and public."



If you are an exacting critic and buy tailoring on a value as well as style basis, you'll be convinced all the more quickly of our ability to serve you by calling and being measured today. Prices reasonable.

## M. V. KOONTZ CO.

EXCLUSIVE LOCAL DEALERS



## HALSEY

## BLACKSMITH SHOP

repairs to all kinds of Farm Machinery promptly made. Wagon work and horseshoeing specialties

J. W. Manrose,  
Halsey, Oregon

#### THE

## HALSEY STATE BANK

HALSEY, OREGON

Capital and Surplus \$27,500

Interest paid on time certificates of deposit.

We invite your banking business.

C. H. KOONTZ, Pres. D. TAYLOR, Vice-Pres  
B. M. BOND, Cashier

## UNION MEAT CO.

HIGHEST CASH PRICES FOR

Cream, Eggs and Poultry

It will be to Your Advantage to See us First

L. W. BYERLEY, Local Agent McCully Bld.

PHONE 206

Customers coming after hours will receive attention by calling at my residence

Try an Ad in the Enterprise

## FARM LOANS

We have loaned more than one million dollars on Willamette Valley Farms, and we have more to loan at the best terms ever offered. You can pay \$50 or more at any time and stop the interest, but if your crop is short you don't have to pay anything except the interest.

### J. M. & H. M. Hawkins

ALBANY, OREGON

## Frank Kirk

DEALER IN

Hay, Grains, Bran, Shorts,  
Ground Feed of All Kinds

CUSTOM GRINDING

Every Tuesday and Friday.  
Until Further Notice.

## NELDON'S WATCH SHOP

Is now prepared to handle all watch jobs sent in by mail on short notice  
Postage paid both ways

FRANK NELDON

The Old Reliable Watchmaker and Jeweler. 519 Main St., Oregon City, Oregon

## THE ENTERPRISE FOR PRINTING