

CHURCH NOTES

BRIDGEVIEW COMMUNITY CHURCH
 J. M. Boss, Pastor
 Morning service, unified; 10 to 11:30 a. m.
 Evening service, 7:30.
 Prayer meeting, Wednesday at 7:30.

CHURCH OF CHRIST
 Cemetery road, 1/2 mile from Caves highway.
 Sunday Services at 10:30 a. m. and 7:30 p. m.
 All are welcome.

ASSEMBLY OF GOD
 Rev. Homer Thompson
 Sunday School begins promptly at 9:45 a. m.
 Morning worship—11 a. m.
 C. A. service at 6:30 Sunday evening.

SELMA BAPTIST CHURCH
 Rev. Douglas Field, pastor.
 Sunday school, 9:45 a. m.
 Morning worship, 11 a. m.
 Sunday at 7 p. m.—Young People's meeting.
 Evangelistic service, 8 p. m.
 Boys' Club and Girls' Club—Monday, 7:15.
 Monday, work night and men's prayer meeting.
 Wednesday, 7:45, mid-week prayer service.
 Choir practice—Thursday, 7:45 p. m.

CAVE JUNCTION COMMUNITY CHURCH
 Rev. Paul O. Kroon, Pastor
 The annual Sunday School Christmas program will be presented Sunday morning, Dec. 21 at 9:45 a. m.
 The program will extend into the morning service with the Pastor's Christmas message concluding the exercises.
 The Sunday School will present a varied program of readings, plays, recitations and songs, including "Away in the Manger", beginners; "Christmas Sharing", a playlet by the 5th and 6th grade; "We Trim the Christmas Tree," the 4th grade; "No Room in the Inn", a short play by the high school class.
 A special feature of the program will be a white gift offering by the Sunday School and audience of groceries which will be used for relief of needy families.
 A cordial invitation is extended to all.

ST. PATRICK'S OF THE FOREST CATHOLIC CHURCH
 Father Kelley.
 High Mass 11 a. m. Christmas day.
 Held in the Catholic church located across from the Ranger station.
 Second and fourth Sundays at 11:00 a. m.

CAVE JUNCTION CHURCH OF SEVENTH DAY ADVENTISTS
 Don Gray, Pastor
 Sabbath School 9:30
 Church service 11:00
 Prayer meeting Wednesday.
 Evening evangelistic service—7:30 p. m.
 Wednesday evening prayer meeting and Bible Study 7:30 p. m.

TAKILMA FULL GOSPEL CHURCH
 Rev. Van McCoy, Pastor
 Sunday School 10 a. m.
 Morning worship service 11 a. m.
 Childrens church 7 p. m.
 Evangelistic service 7:45 p. m.
 Thursday, midweek service, 7:45 p. m.

JESUS NAME PENECONSTAL CHURCH
 Robert Estes, Pastor
 Sunday School, 10 a. m.
 Morning worship, 11 a. m.
 Sunday evening services, 8 p. m.
 Tuesday prayer service, 8 p. m.
 Friday, young people's service at 8 p. m.
 Services are now being held in the new church building on the Old Stage road 1/4 mile south of the Caves highway.
 FOR BUSINESS, mill or home use buy your salesbooks at the NEWS office.

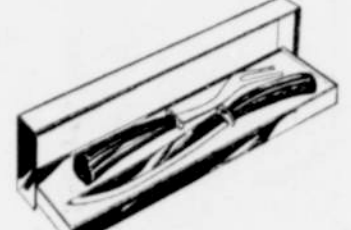
Visit Deals
 Mr. and Mrs. Jim Cummins and children from Roseburg were here Sunday to visit the Bill Deals who have just moved into the Lovejoy house west of Cave Junction.



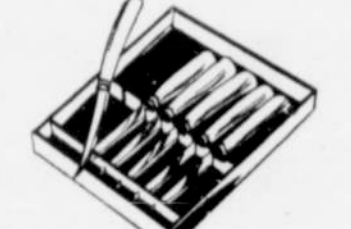
Here are a few of the hundreds of gift ideas offered to shoppers for purchase at Cave City Parts & Supplies. Come in and see our selection today!



PYREX BOWL SET
 Hundreds of uses for this colorful set. Largest bowl is 4 quarts.
 \$2.95



CARVING SET
 Handsome set at a really low price. Hollow ground, stainless steel blades, hardened plastic handles.
 2-pc. \$1.95
 3-pc. \$10.95



STEAK KNIFE SET
 Hollow-ground, stainless Sheffield steel blades, hardened plastic handles 6 pc.
 \$3.95 & \$12.95



BRUCE CHOPPING BLOCK
 Beautifully made laminated hardwood 11 1/4-inch square block. Use for kitchen slicing, pounding.
 \$5.95

Cave City Parts & Supplies
 • TREASURE HUNT MERCHANT •

The EASY-DOES-IT CORNER

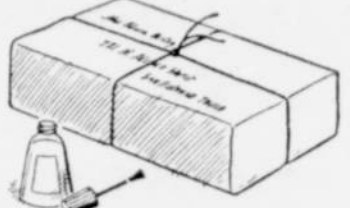
By Standard Oil Company

A Few Tips on Mailing Christmas Packages

First of all, we want to wish you and your family a very Merry Christmas!

A milk carton makes handy mailing container for cookies. Cut top of milk carton on three sides. Pack cookies together with a few marshmallows which act as humidors to retain moisture, keep cookies fresh longer. When filled, seal top of milk carton with tape.

Wet cord before wrapping packages for mailing. As it dries, cord shrinks, making tighter, safer package. Names and addresses on packages will

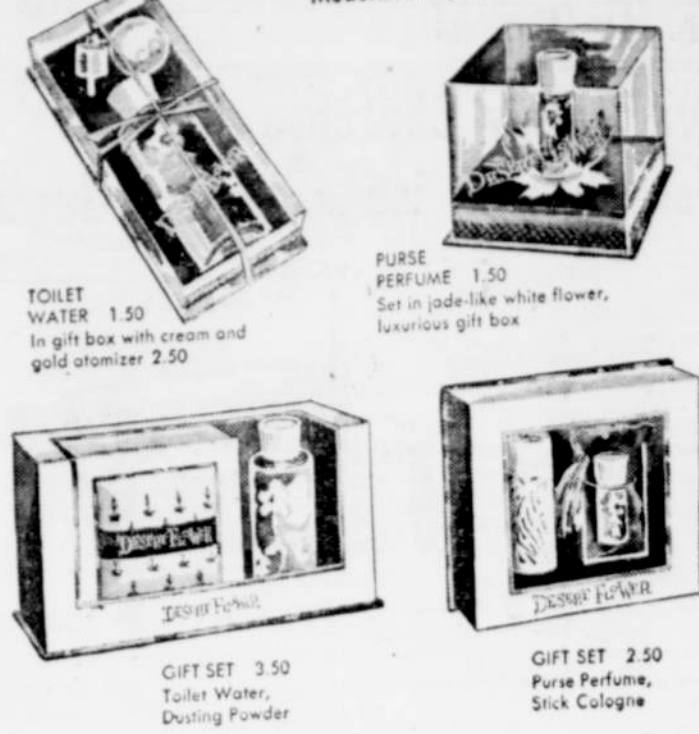


remain legible if you give them a coat of clear nail polish, before sending. Thanks very much for your patronage of our local business during this past year. And Happy 1953!



Distributed by
HOWARD BEARSS
 PH. 1712 CAVE JUNCTION

Superb Gifts of DESERT FLOWER



Valley Drug
 PRESCRIPTIONS—ALWAYS AT A SAVING!
 R. George Simmons, Registered Pharmacist
 WE GIVE S & H GREEN STAMPS
 Ph. 3612 Cave Junction
 • Treasure Hunt Merchant

Dining Free Dancing
 —EVERY NIGHT—
 2 MILES SOUTH OF O'BRIEN AT FORMER ELK CREEK LODGE
 Managed by J. M. Hovanski

WANTED: **Fir and Pine Slumpage**
 —LARGE OR SMALL TRACTS—
CABAX MILLS - - - Kerby

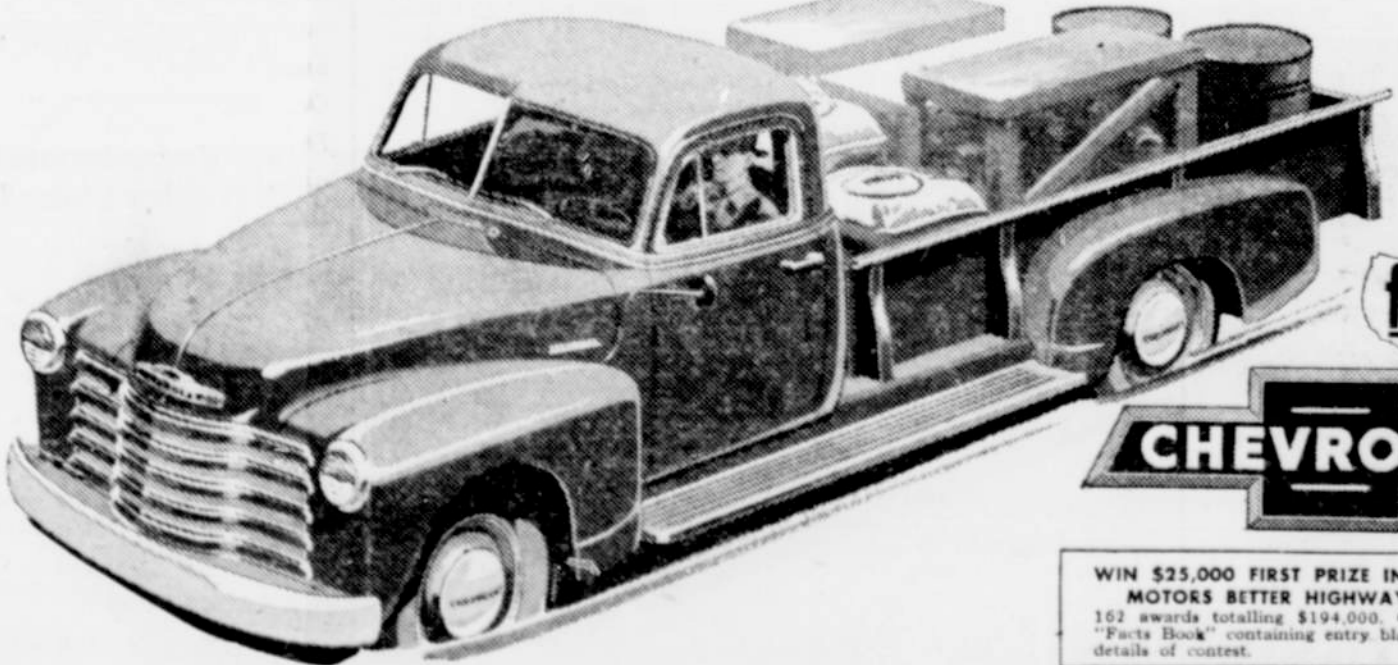


check Stem's suggestions in
Gift Jewelry

- | | |
|--|--|
| <p>FOR MOM</p> <ul style="list-style-type: none"> —Lovely Silverware in 15 different patterns —Watches —Diamond and Occasional Rings —Necklace and Earring Matching Sets —Pearls | <p>FOR DAD</p> <ul style="list-style-type: none"> —Watches for Both Dress and Work —Lodge Rings —Ronson Cigarette Lighters and Cases —Sunbeam, Remington and Schick Electric Razors —Tie Clasps |
| <p>FOR DAUGHTER</p> <ul style="list-style-type: none"> —Watches —Musical and Plain Jewelry Boxes —Bracelets —Birthstone Rings —Identification Bracelets —Religious Jewelry —Parker Pen and Pencil Sets —Anklets | <p>FOR SON</p> <ul style="list-style-type: none"> —Leather Billfolds —I-D Bracelets —Sturdy Watches —Cigarette Lighters —Electric Razors —Key Chain —Tie Clasps —Monogram Rings |
| <p>FOR BABY</p> <ul style="list-style-type: none"> —Feeding Spoon and Rattle Set —Bracelet and Necklace Sets —Silver Cups —Lockets —Silverware Starter Set —Curved Handle Feeding Spoon | |

C. GUY STEM
 Your Local Jeweler
 FOR FINE WATCHES, SILVER, DIAMONDS
 Ph. 3803 Cave Junction
 • TREASURE HUNT MERCHANT •

You always get a
Better Deal
 and a
Better Buy
 with Chevrolet trucks!



A better buy because . . .
 THEY LIST FOR LESS—Large volume production economies let Chevrolet trucks list for less than comparable models of any other make.
LOWER OPERATION AND MAINTENANCE COSTS—Valve-in-Head engines, Hypoid rear axle, channel-type frames, Flexi-Mounted cabs and many other Chevrolet features assure you lower over-all costs.
TRADITIONALLY HIGHER TRADE-IN—Chevrolet trucks keep their value longer—a wonderful dollars-and-cents plus at trade-in time.
A better deal because . . .
 Chevrolet trucks list for less . . . bring you important on-the-job economies.

Better Buy Now!



WIN \$25,000 FIRST PRIZE IN THE GENERAL MOTORS BETTER HIGHWAYS AWARDS
 162 awards totalling \$194,000. Come in for free "Facts Book" containing entry blank and complete details of contest.

KELT CHEVROLET
 7th St., between 'J' and 'K' PHONE 4461 GRANTS PASS, OREGON