

DID YOU KNOW?

TUBERCULOSIS ASSOCIATIONS ARE SPONSORING 35 MEDICAL RESEARCH PROJECTS IN 14 STATES AND THE DISTRICT OF COLUMBIA. CHRISTMAS SEAL FUNDS ALSO MAKE POSSIBLE 13 FELLOWSHIPS FOR TUBERCULOSIS INVESTIGATORS.

14,000,000 X-RAY FILMS WERE TAKEN IN THE UNITED STATES LAST YEAR.

TB KILLS MORE PEOPLE IN THE UNITED STATES THAN ALL OTHER INFECTIOUS DISEASES COMBINED!

74% OF THE MONEY RAISED BY THE SALE OF CHRISTMAS SEALS REMAINS IN THE STATE WHERE CONTRIBUTED.

1952 Christmas Greetings

CHURCH NOTES

ST. PATRICK'S OF THE FOREST CATHOLIC CHURCH
Father Kelley.
Held in the Catholic church located across from the Ranger station.

Second and fourth Sundays at 11:00 a.m.

CAVE JUNCTION COMMUNITY CHURCH
Rev. Paul O. Kroon, Pastor
Sunday School 9:45 a.m.
Morning Worship 11 a.m.
Young People's Meetings 6:30 p.m.
Evening Service 7:45 p.m.
Choir Practice 8 p.m. Tues.
Bible Study and Prayer Hour Wednesday, 7:45 p.m.

GIFTS GALORE



Skilsaw
PORTABLE CIRCULAR HAND SAW

6-Inch Blade Only **\$39.50**



give him the NEW—**DOUBLE HEADER Norelco**
ELECTRIC RAZOR

You give the gift of smoother, faster shaving when you give him the new Norelco!

\$24.95

in genuine leather travel case

THE BOB and RUTH SHOP

Cave Junction
OPEN 'TIL 9 MONDAYS AND FRIDAYS TO CHRISTMAS
• TREASURE HUNT MERCHANT •

Plenty of Christmas Spirit in these

GIFTS FOR DAD

AS ADVERTISED IN POST

MAXAW 700
Heavy Duty—All Ball and Roller Bearing—Industrial Quality



\$8950

MAXAW 700 WITH **MAGIC PIVOT**

CUTS 2" DRESSED LUMBER AT 45°

only **\$6950**

magic pivot does it! Yes, with this amazing new exclusive CUMMINS feature the MAXAW 700 noses the blade down deeper into the work at 45°—where other saws lose cutting depth. The MAXAW 700 actually cuts deeper at 45° with a 6-3/8 in. blade than any 7 in. saw and most 7-1/4 in. saws that cost up to twice as much, weigh 15 to 21 lbs. The MAXAW 700 weighs 10 lbs.—yet it puts more power at the cutting edge, cuts faster.

complete line of builders tools—the perfect gift for males of all ages

Caves Building Supplies
• TREASURE HUNT MERCHANT •

BRIDGEVIEW COMMUNITY CHURCH
J. M. Boss, Pastor
Morning service, unified; 10 to 11:30 a. m.
Evening service, 7:30.
Prayer meeting, Wednesday at 7:30.

ASSEMBLY OF GOD
Rev. Homer Thompson
Sunday School begins promptly at 9:45 a. m.
Morning worship—11 a. m.
C. A. service at 6:30 Sunday evening.
Evening evangelistic service—7:30 p. m.
Wednesday evening prayer meeting and Bible Study 7:30 p. m.

SELMA BAPTIST CHURCH
Rev. Douglas Field, pastor.
Sunday school, 9:45 a. m.
Morning worship, 11 a. m.
Sunday at 7 p. m.—Young People's meeting.
Evangelistic service, 8 p. m.
Boys' Club and Girls' Club—Monday, 7:15.

Monday, work night and men's prayer meeting.
Wednesday, 7:45, mid-week prayer service.
Choir practice—Thursday, 7:45 p. m.

JESUS NAME PENECONSTAL CHURCH
Robert Estes, Pastor
Sunday School, 10 a. m.
Morning worship, 11 a. m.
Sunday evening services, 8 p. m.
Tuesday prayer service, 8 p. m.
Friday, young people's service at 8 p. m.

Services are now being held in the new church building on the Old Stage road 1/4 mile south of the Caves highway.
There will be a Fellowship Night this Saturday Dec. 6 at 7:30 in the church. There will be out of town visitors. Visiting ministers will give short talks and there will be special music and singing. The public is invited.

TAKILMA FULL GOSPEL CHURCH
Rev. Van McCoy, Pastor
Sunday School 10 a. m.

Morning worship service 11 a. m.
Childrens church 7 p. m.
Evangelistic service 7:45 p. m.
Thursday, midweek service, 7:45 p. m.
A Revival is now in progress at the church with Rev. Clara Nieder from Ashland preaching nightly. Services start at 7:45.

CHURCH OF CHRIST
Cemetery road, 1/2 mile from Caves highway.
Sunday Services at 10:30 a. m. and 7:30 p. m.
All are welcome.

CAVE JUNCTION CHURCH of SEVENTH DAY ADVENTISTS
Don Gray, Pastor
Sabbath School 9:30
Church service 11:00
Prayer meeting Wednesday.

JOB PRINTING—Call the NEWS.

Attend Patriarch Militant Ball
Mr. and Mrs. Ed C. Abbey and nice Darlene Nelson spent the weekend in Forest Grove visiting relatives. The Abbys attended the Patriarch Militant ball held in Portland Saturday night.

Guests of Allens
Mr. and Mrs. George L. Allen had as guests for Thanksgiving Mr. and Mrs. Leonard (Bud) Allen and three sons of Klamath Falls, Ore. Also there for the holiday were Mr. and Mrs. Carl J. Theuerhauf and two children, Carol and Johnny, of Crescent City, Calif.

ANNOUNCE ENGAGEMENT
Mr. and Mrs. Russel S. Cooper of Selma are announcing the engagement of their daughter Claire Lorene to Donald Raymond Campbell, son of Mr. and Mrs. R. H. Campbell of Cave Junction. No date has been set for the wedding.



Just watch this McCulloch cut, Olaf!

Everywhere you go, you see McCulloch chain saws. You'll find them working in the biggest camps and you'll find them in the hands of the smallest operators. Loggers like McCullochs because they're easy to carry, easy to start, and easy to keep running. And you should see them cut.

See a Demonstration—Within the next few days, stop by our store for a real demonstration of wood cutting. Or give us a call and we'll try to arrange a show for you at your place. There's no obligation. We just want you to see what a McCulloch can do.

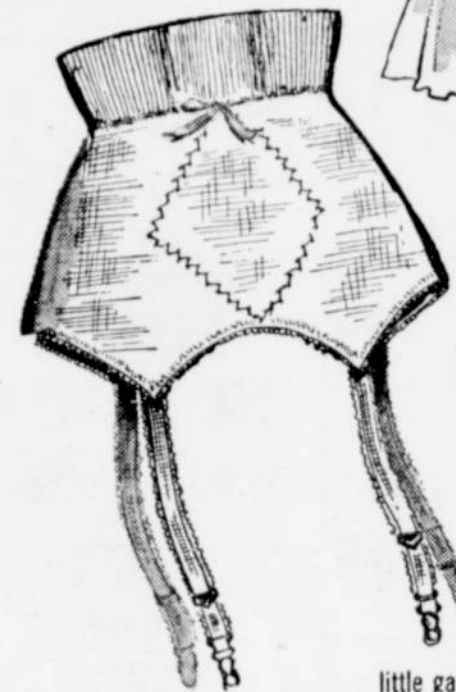
6 Models Available

McCULLOCH CHAIN SAWS

(Located in Former Taylor's Self Service Laundry)
CAVE JUNCTION

FOR CHRISTMAS GIVING . . .

IN goes your waist
UP goes your hose . . .



with **Waist-Nip**
by **Youthcraft**

\$3.98

A joy for every junior figure . . . the cleverest little garter belt ever designed, because it actually does more than hold up your hose . . . it takes inches off the waist . . . its inner concealed front panel smooths your tummy. And it does its amazing job with complete comfort. In petite, small, medium and large sizes. White or Black.

Dorsme'

Corner 6th and J Sts. Ph. 7479 Grants Pass

Come see for yourself!

See why you can be sure you get the deal you deserve here. See how you get more with Chevrolet . . . pay less with our low prices. See for yourself . . .

There's **NO** Value like **CHEVROLET** Value!



LOWEST PRICED IN ITS FIELD!
This beautiful Styleline De Luxe 4-Door Sedan lists for less than any comparable model in its field. (Continuation of standard equipment and trim illustrated is dependent on availability of material.)

SEE WHAT YOU GAIN WITH THESE EXCLUSIVE CHEVROLET FEATURES

More Powerful Valve-in-Head Engine with Powerglide Automatic Transmission (optional on De Luxe models at extra cost) • Body by Fisher • Center-

poise Power • Safety Plate Glass all around, with E-Z-Eye plate glass (optional at extra cost) • Largest Brakes in its field • Unitized Knee-Action Ride.

SEE WHAT YOU SAVE WITH THE

Lowest-Priced Line in its Field!

WIN \$25,000 FIRST PRIZE IN THE GENERAL MOTORS BETTER HIGHWAYS AWARDS
162 awards totalling \$194,000. Come in for free "Facts Book" containing entry blank and complete details of contest.

KELT CHEVROLET

7th St., between 'J' and 'K' PHONE 4461 GRANTS PASS, OREGON