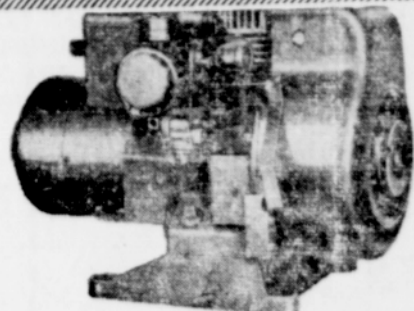


ONAN*

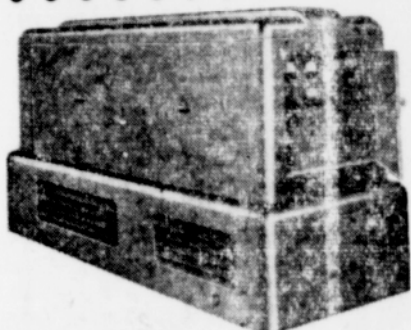
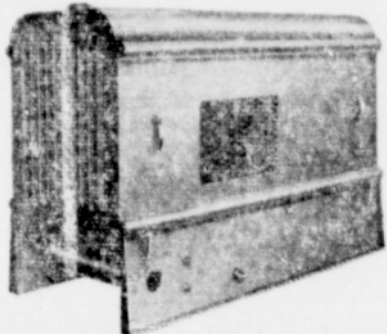
Gasoline & Diesel
ELECTRIC PLANTS



PORTABLE
Lightweight, easy-to-carry Onan Electric Plants ranging in size from 350 to 3,500 watts A.C. and D.C. Powered by one or two-cylinder, air-cooled gasoline engines. Complete with carrying handles.

STANDBY

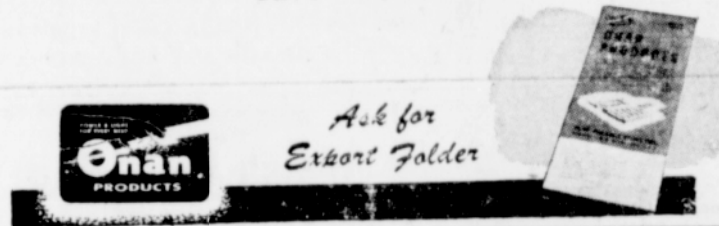
Gasoline-powered plants — 350 to 35,000 watts. Line Transfer Controls available for starting A.C. plants automatically when commercial power fails, and stopping the plants when power is restored.



STATIONARY
Dependable Onan Electric Plants for farms, homes, and industries. Low-cost gasoline-engine powered models in sizes from 350 to 35,000 watts. Diesel Electric Plants—2,500 to 35,000 watts.

*ONAN ELECTRIC PLANTS—A.C. Models: 350 to 35,000 watts in all standard voltages and cycles. D.C. Models: 600 to 15,000 watts, 115 or 230 volts. Battery Chargers: 500 to 6,000 watts; 6, 12, 24, 32 and 115 volts.
ONAN AIR-COOLED ENGINES—Model CK: 10 HP, 2-cylinder opposed. Model BH: 5 1/2 HP, 2-cylinder opposed. Model 1B: 3 1/4 HP, vertical single-cylinder.

Illinois Valley Hardware
SERVICE As Well As SAVINGS
Cave Junction



Junior Women's Club

The new officers were installed by Hazel Henry in an impressive ceremony by candlelight at a dinner meeting at the Todelope Cafe. The table held a centerpiece of yellow roses, flanked on either side by green and yellow tapers. Gifts were presented to outgoing president Jerrie Rosenberg and installing officer Hazel Henry as a token of appreciation.

In the absence of president Ettie Brading, Doris Beauvais, vice president, presided over a short business meeting. The new committee chairmen for the year are as follows:

- Playground—Jean Nichols
- Ways and Means—Pat Stem.
- Publicity—Margaret Nowak.
- Welfare—Mildred Gammel.
- Social—Marilyn Gill.

It was reported by Mildred Petsch that thirty day delivery can be had on equipment ordered for the Kerby Grade school playground.

The next meeting will be held at the American Legion Auxiliary room on Jan. 9.

Dorcas Welfare Society Is Reorganized

The Dorcas Welfare Society of the local Seventh-Day Adventist met last Tuesday afternoon to reorganize and plan a year of active work.

Mrs. Hazel Falkenhayn was elected leader, with Mrs. Marjorie Chapman her assistant. Mrs. Elaine Hill will be secretary-treasurer for the year.

Among some of the plans discussed were sales of various kinds for the purpose of raising money for their main objective—community welfare. They also plan to make and distribute bags throughout the valley for the purpose of collecting discarded clothing and rags. The clothing which is not too worn will be mended and given to those in the Illinois Valley who may not be as fortunate as most of us. Also for those in need because of disaster of fire or flood. The clothing which is not worth mending will be bundled and sold for wiping rags or other purposes.

They also discussed a few social activities for the year.

The local society is a part of the world-wide Dorcas Welfare Federation, a part of the Home Missionary Department of the General Conference of Seventh-Day Adventist, with headquarters in Tacoma Park, Washington, D. C. Their real objective is to help humanity in the way they need it most.

Let us remember these ladies that are working for the good of the community. If you have anything they can use let them know so they can have the supplies on hand when they are needed.

Radio Repairs

"The Best for less by Les"

BASHAM RADIO SERVICE
8/10 Mile East On Caves Hiway

5% INTEREST

From January 1st on Certificates issued up to January 15. Interest dates July 1st and December 31.

\$10 TO \$10,000

VALLEY FINANCE 5% PREFERRED STOCK CERTIFICATES

Valley Finance Co.

A Company Owned and Operated By Residents of Josephine County

409 So. 6th St. Phone 3650 & 5494 Grants Pass

Church

CAVE JUNCTION COMMUNITY CHURCH

George H. Gray, Pastor
9:50 a.m. Sunday School.

11:00 a.m. Church service; and Junior church, Mrs. Fatherton leader.

7:45 p.m. Evening service and auditorium; and Junior and Intermediate group, Mrs. Sherier leader

Rev. Gray chose for his lesson last Sunday, the eighth chapter of Romans and for his text the sixth verse. He urged us to put away carnal things of this world, and be filled with the Spirit. Another point, was the fact "that our bodies are the house we dwell in, but who dwells in our heart is what counts, also that our body is the gateway to the cross."

The choir was composed entirely of girls and under Mrs. Freeman's direction sang beautifully "In the Garden."

Rev. Collins will be here every night this week to give lessons in Bible Instruction.

SUNDAY SCHOOL NEWS
Sunday school attendance was 127.

Mrs. Freeman read a poem, "Tell Me the Name," written by Miss Beulah Rite.

A missionary story was told by Mrs. Hamilton, and Gerald Gibbons and Mr. Mayfield celebrated their birthdays.

The banner winners were beginners. They sang "Good-bye Now To You."

The intermediate girls won the honor roll for the last three months.

CATHOLIC CHURCH

Father Kelley.

Held in the Catholic Chapel located on the Redwood highway, across from the Ranger station.

Second and fourth Sundays at 11 a.m.

CAVE JUNCTION CHURCH OF SEVENTH DAY ADVENTISTS
Pastor—J. Apigian
Sabbath School 9:30
Church service 11:00
Prayer meeting Wednesday.

EPISCOPAL SUNDAY SCHOOL

Episcopal Sunday school is now being held each Sunday at 11 a. m. at the Legion Hall in Cave Junction. An adult class is also being organized. All are welcome.

Christian Science Churches

"GOD" was the subject of the Lesson - Sermon in all Churches of Christ, Scientist, on Sunday, January 7.

The Golden Text was, "Now unto the King eternal, immortal, invisible, the only wise God, be honour and glory for ever and ever" (I. Tim. 1:17).

Among the citations which comprised the Lesson - Sermon was the following from the Bible: "Thus saith the Lord the King of Israel, and his redeemer the Lord of hosts; I am the first, and I am the last; and beside me there is no God" (Isa. 44:6), together with the following correlative passage from the Christian Science textbook, "Science and Health with Key to the Scriptures" by Mary Baker Eddy: "GOD The great I AM; the all-knowing, all-seeing, all-acting, all-wise, all-loving, and eternal; Principle; Mind; Soul; Spirit; Life; Truth; Love; all substance; intelligence" (p. 587).

CHURCH OF CHRIST

Preaching every Sunday morning at 10:30, communion services immediately following at our church house just south of J. S. Bedingfield's residence on the cemetery road. Everyone is cordially invited.

ASSEMBLY OF GOD

Rev. D. B. Wantland, pastor

The attendance at Sunday School for the past two Sundays has been 100 and 104 respectively. During the six years since the beginning of the church in Kerby, the attendance goal has been 100 for regular attendance. Previous to this month, this record was broken only on Easter Sunday. A group picture was taken of the entire Sunday School on Sunday morning Jan. 7. We are sorry so many of the regular members were absent due to illness. The class for the young married folks with Gilbert Wantland as teacher, is growing rapidly. Congratulations to the Junior Boys, also, for a fine class. The young people are building up their class, and welcome other teenagers who do not attend other churches. Mrs. Burl Cox and her primary class need a larger class room. The choir overflows the small platform. Plans are under way to enlarge the platform and add more Sunday school rooms.

At the monthly Fellowship meeting of the Assemblies of God of Section 6, held at Eagle Point on Monday, the Kerby Sunday School was awarded the attendance banner for the last quarter (Oct., Nov., Dec.) This banner was presented on the basis of percentage gain over the same quarter of the previous year. Kerby's percentage gain was 71% over 1949. At the end of this quarter (Jan., Feb., and Mar.), the banner will go to the leading Sunday School for that period.

The Women's Missionary Council met on Wednesday at the parsonage for all day work on clothing for local needy families, and missionaries. Pot-luck luncheon was served at noon.

Choir practice will be held each Monday evening at 7:30. Gilbert Wantland is director.

C. A. service at 6:30 Sunday evening.

During the morning worship hour this Sunday, the church will receive into active membership thirteen new members. We thank the Lord for this added help in God's work.

Sunday School begins promptly at 10 a. m.

Morning worship—11 a. m.

Evening evangelistic service — 7:30 p. m.

Wednesday evening prayer meeting and Bible Study 7:30 p.m.

SELMA BAPTIST CHURCH

Rev. Douglas Fields, Pastor.
Sunday school, 9:45 a. m.
Church service, 11:00 a. m.
Young peoples' meeting, 6:30 p. m.

Church, 7:30 p. m.

Prayer meeting, 7:30 p. m. Wednesday at the parsonage.

The general public is invited to each of these meetings.

NEW 1951 CHEVROLET TRUCKS

GREAT FEATURES

make these Advance-Design Trucks

YOUR GREAT BUY!

Great Features Everywhere You Look . . .

GREAT ENGINE FEATURES

- Two Great Engines
- Valve-in-Head Efficiency
- Blue-Flame Combustion
- Power-Jet Carburetor
- Perfected Cooling
- Specialized 4-Way Lubrication
- Thermostatic Heat Control
- Cam-Ground Cast Alloy Iron Pistons

GREAT CHASSIS FEATURES

- Rugged, Rigid Frames
- Hypoid Rear Axles

• Single-Unit Rear Axle Housings

- New Twin-Action Rear Brakes (heavy-duty models)
- New Dual-Shoe Parking Brake (heavy-duty models)
- New Torque-Action Brakes (light-duty models)
- Foot-Operated Parking Brake (models with 3-speed transmission)
- Steering Column Gearshift (models with 3-speed transmission)

• 4-Speed Synchro-Mesh Transmission (in heavier models)

- Wide Range of Springs

GREAT CAB AND BODY FEATURES

- New Ventianes in Cabs
- Flexi-Mounted Cab
- Improved Full-Width Seats
- Adjustable Seat Assures Proper Eye Level

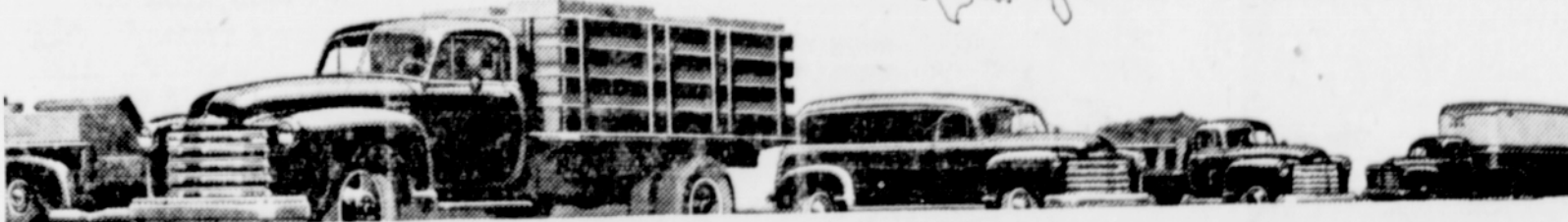
• Large Door Openings

- All-Around Cab Visibility
- Side Doors Held Open by Over-Center Stop
- Sturdy Steel Construction
- Unit-Design Bodies
- Pick-Up Bodies with Flush Skid Strips
- Insulated Panel Bodies
- Extra-Strong Stake Bodies
- Full-Width Gravel Shield
- One-Piece Fenders
- Counterbalanced Alligator-Jaw Hood



First in demand
First in value
First in sales

MORE CHEVROLETS IN USE THAN ANY OTHER TRUCK!



KELT CHEVROLET

411 SOUTH SIXTH STREET

PHONE 4461

GRANTS PASS

Clearance

of Winter Merchandise!!

One lot of blouses, values to \$4.98 at **198**

25% off on ladies' and misses' raincoats and jackets.

25% off on all chenille robes.

Many sale values in children's sweaters.

One lot misses' and ladies' skirts, mostly all wool at **298**

BARGAINS IN MEN'S WINTER SHIRTS

Clothing and shoes for the entire family.

MARTIN'S

DRY GOODS & CLOTHING
"Where Price and Quality Are Friends."

CAVE JUNCTION
We Give S. & H. Green Stamps