

# CHURCH

## NOTES

### CAVE JUNCTION COMMUNITY CHURCH

George H. Gray, Pastor  
Sunday School at 10 a. m.  
Morning Worship at 11 a. m.

S.S. Attendance was 123.

Birthdays were observed for

Mrs. John Dow and Marvin Cross.

It being the last Sunday when

Mrs. Hendrickson would be present

to help with the S.S. work,

Rev. Gray expressed for the S.S.

and Church their appreciation of

her valuable services. Mrs. Goldie

Sowell has kindly offered to take

over some of the things so well

done by Mrs. Hendrickson, which

shows a splendid spirit.

Mr. McGee spoke both in the

morning and the evening services

on the Value of Children's Work,

and in the evening took up the

matter of released time from day

school sessions for religious in-

struction and it is hoped that such

a program can be worked out for

the children of our Valley.

The choir sang at the morning

session, "Savior, Lead Me" and

at the close Mrs. Gray sang "The

Name of Jesus."

Among other visitors Sunday

were Mrs. Charlotte McKenna, of

Grants Pass, Mr. Bob Edwards of

Ashland, Mert Ingham, Jr., Miss

Cecily Hawk, and Mrs. Bushman

of Cave Junction.

At the Wednesday evening serv-

ice there was present from the

Youth conference at CCC camp,

Rev. H. A. Schlatter of Roseburg

who spoke to those attending.

The Daily Vacation Bible School

is still enrolling new members,

and hopes to reach 150 before the

week's end. Very splendid work is

being done, memory work and

handcraft, and on Friday evening

at 7:30 will occur the commence-

ment exercises at the church when

all parents and friends are cordily

invited to come out and hear the

interesting program which will be

given. The school's part in the

Saturday parade, with the Juniors

on decorated bicycles, the younger

children in a large truck and other

children marching with the church

and American flags and carrying

ponpons of colored papers gave a

colorful picture. Much credit is

due the faithful teachers and

helpers, also the mothers who have

loaded up their cars each morning

to bring in children who otherwise

could not have attended.

The High School Class of the Community Church has decided to start on a project which they have had in mind for some time. They are planning on cleaning up the lots on the East side of Caves Avenue which belong to Art Drews and the use of which has been given them for a playground. There are visions of a tennis court, picnic grounds with swings etc., and of course they want a club house eventually which can be used for inside entertainment. The fact that they are willing to start with a real clean-up job is much in their favor; and if any of the parents or friends would like to help, will you please be on hand on Monday evening, July 24, after supper and much may be accomplished in one evening. The class has enlisted the help of another group of young folks and some of the mothers have expressed a willingness to man a shovel if necessary.

After work, refreshments will be served at the Community church dining room.

The playground when completed will be available to all children who want to use it.

### ASSEMBLY OF GOD

Kerby, Oregon

Rev. D. B. Wantland, pastor

Sunday School, 10 a. m.

Morning Worship, 11 a. m.

Time—all evening services—

7:45 D.S.T.

Wednesday evening, Bible study

and prayer meeting.

Rev. and Mrs. Richard Johnston,

missionaries to Japan, will be the

speakers at the special missionary

services planned for Thursday

night, July 27. The Johnston's

have spent the last several months

at the Berkeley University in Oak-

land, California, studying the

Japanese language. They expect

to sail for Japan in the fall. The

public is invited to attend this

service.

### CAVE JUNCTION CHURCH OF SEVENTH DAY ADVENTISTS

Pastor—J. Apigian

Sabbath School .....9:30

Church service .....11:00

Prayer meeting Wednesday.

### CATHOLIC CHURCH

Father Kelley.

Held in the Catholic Chapel lo-

cated on the Redwood highway.

### Christian Science Churches

"LIFE" was the subject of the Lesson-Sermon in all Churches of Christ, Scientist, on Sunday, July 16.

The Golden Text was, "The Lord is my light and my salvation; whom shall I fear? The Lord is the strength of my life; of whom shall I be afraid?" (Ps. 27:1).

Among the citations which comprised the Lesson-Sermon was the following from the Bible: "Blessed are they that do his commandments, that they may have right to the tree of life, and may enter in through the gates into the city" (Rev. 22:14), together with the following correlative passage from the Christian Science textbook, "Science and Health with Key to the Scriptures" by Mary Baker Eddy. "For right reasoning there should be but one fact before the thought, namely, spiritual existence" (p. 492).

across from the Ranger station. Second and fourth Sundays at 11 a. m.

### CHURCH OF CHRIST

Preaching every Sunday morn-

ing at 10:30, communion services

immediately following at our

church house just south of J. S.

Bedingfield's residence on the ce-

metery road. Everyone is cordially

invited.

### SELMA BAPTIST CHURCH

Rev. S. H. M. Staines.

Sunday School, 9:45 a. m.

Church Services, 11:00 a. m.

Young Peoples' Meeting, 7 p. m.

Prayer Meeting Wednesday,

8 p. m.

### Foursquare Gospel Tabernacle

Rev. Raymond L. Cox, Th.D.,

Rev. Shirley Cox; co-pastors.

Sunday School 10 a. m.

Sunday Worship 11 a. m.

Sunday Evangelical service 7:45.

Thursday Young Peoples service

and Bible study, 7:45 p. m.

### BRIDGEVIEW COMMUNITY CHURCH

For over thirty years the Com-

munity Chapel of Bridgeview.

Where love reigns and God is real.

Wm. D. Peay, Pastor

### BIBLE SCHOOL

The teachers of the younger

groups of children at the Daily

Bible School very much appreciate

the privilege of having the lovely

lawn of the Mayor and his wife on

which to play during their recess

periods.

### WILSON WELSH IN STITCHES

On Thursday last what might have been a fatal accident occurred when Wilson Welsh was struck on the head by a falling tree, and had to have five stitches taken in his scalp.

### DINNER GUESTS

Mrs. Frank Hamilton is entertaining this afternoon (Thurs.) in honor of Mrs. Louise Hendrickson, who soon leaves for her new home.

Mrs. Goldie Sowell, Mrs. William A. Brown and Mrs. McDaniel were dinner guests on Tuesday at the home of Mrs. Bert Watkins.

## WHEN YOU CLEAN HOUSE—



### DO YOU NEED A STEVEDORE? or just the vacuum cleaner?

It's unheard of in a home that has Adequate Wiring—pushing and shoving the furniture around to get at an outlet.

#### With ADEQUATE WIRING

always—in any room in your house—the vacuum, radio, lamps, household appliances and other electrical equipment can quickly and easily be connected, and conveniently and effectively used. There'll be no more dust-catching extension cord entanglements to put up with, no more having to crawl under beds and couches to pull out one plug so you can connect another.

#### ADEQUATE WIRING

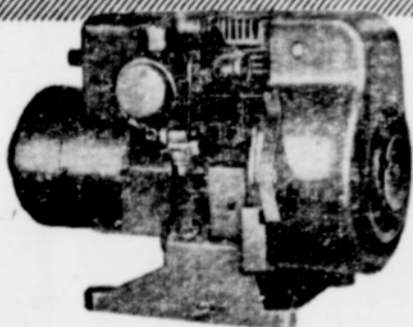
not only makes provision for enough outlets. An Adequate Wiring installation insures, too, that your home will be economically supplied with enough power for all its electrical needs. And with enough permanent lights, controlled by switches where needed, to reduce accidents and eyestrain and add beauty to your home, indoors and out.

#### ADEQUATE WIRING COSTS SO LITTLE—MEANS SO MUCH

ASK FOR FULL DETAILS

SEE YOUR ELECTRICAL CONTRACTOR

## ONAN\* Gasoline & Diesel ELECTRIC PLANTS

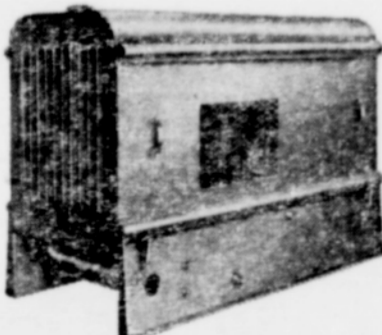


### PORTABLE

Lightweight, easy-to-carry Onan Electric Plants ranging in size from 350 to 3,500 watts A.C. and D.C. Powered by one or two-cylinder, air-cooled gasoline engines. Complete with carrying handles.

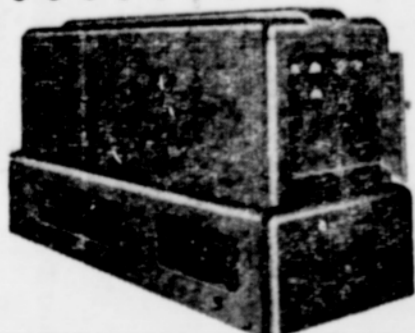
### STANDBY

Gasoline-powered plants—350 to 35,000 watts. Line Transfer Controls available for starting A.C. plants automatically when commercial power fails, and stopping the plants when power is restored.



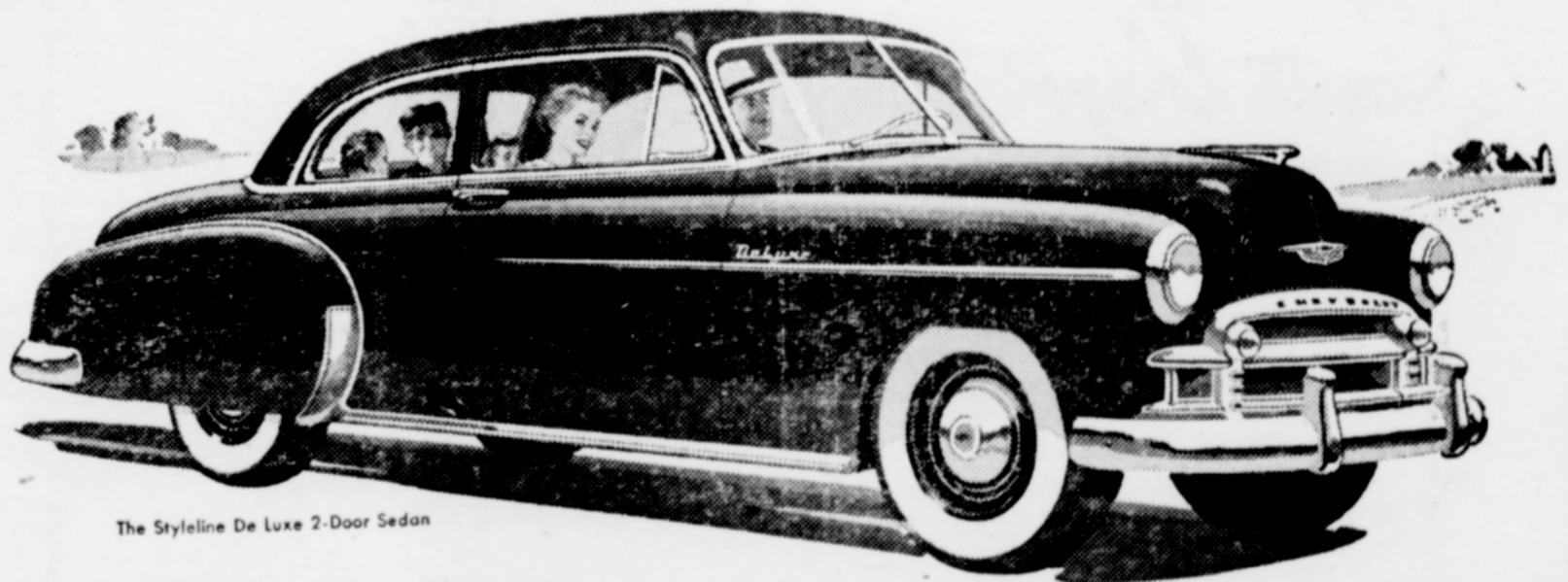
### STATIONARY

Dependable Onan Electric Plants for farms, homes, and industries. Low-cost gasoline-engine powered models in sizes from 350 to 35,000 watts. Diesel Electric Plants—2,500 to 35,000 watts.



\*ONAN ELECTRIC PLANTS—A.C. Models: 350 to 35,000 watts in all standard voltages and cycles. D.C. Models: 600 to 15,000 watts, 115 or 230 volts. Battery Chargers: 500 to 6,000 watts; 6, 12, 24, 32 and 115 volts. ONAN AIR-COOLED ENGINES—Model CK: 10 HP, 2-cylinder opposed. Model BH: 5 1/2 HP, 2-cylinder opposed. Model 1B: 3 1/4 HP, vertical single-cylinder.

**ILLINOIS VALLEY HARDWARE**  
SERVICE As Well As SAVINGS  
CAVE JUNCTION



The Styleline De Luxe 2-Door Sedan

## Drive home the facts!



#### First and Finest for thrills and thrift

Chevrolet brings you the finest combination of thrills and thrift... with its new 105-h.p. Valve-in-Head Engine\*—most powerful in the entire low-price field—or its highly improved, more powerful standard Valve-in-Head Engine.



#### First and Finest for all-around safety at lowest cost

Only Chevrolet offers this five-fold protection: (1) Curved Windshield with Panoramic Visibility (2) Fisher Unisteel Body (3) Safety Plate Glass all around (4) Unitized Knee-Action Ride (5) Certi-Safe Hydraulic Brakes.



#### First and Finest for styling and comfort at lowest cost

Chevrolet's Style-Star Bodies by Fisher provide extra-wide form-fitting seats—extra-generous head, leg and elbow room—extra value in every detail of styling and comfort in this longest and heaviest low-priced car!



#### First and Finest for driving and riding ease at lowest cost

Only Chevrolet offers finest no-shift driving, with Powerglide Automatic Transmission and 105-h.p. Engine\*... or finest standard driving, with highly improved standard Engine and Synchro-Mesh Transmission... at lowest cost.

Come in—drive a Chevrolet and you'll know why it's AMERICA'S BEST SELLER... AMERICA'S BEST BUY!

\*Combination of Powerglide Automatic Transmission and 105-h.p. Engine optional on De Luxe models at extra cost.



## KELT CHEVROLET

411 South Sixth Street

PHONE 4461

Grants Pass, Oregon