

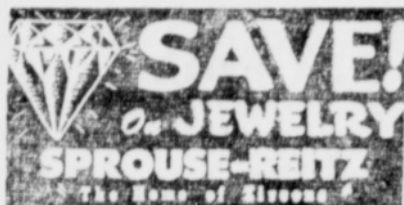
CARD OF THANKS

May we take this method of thanking neighbors, friends, Legion and VFW for their kind expressions of sympathy in our recent bereavement of our beloved husband and brother, George Covey, and for the lovely floral offerings.

Mrs. George Covey
Mrs. Leona Hambaugh.

CORRECTION

An error was made in last week's issue of The News, stating that George Covey, deceased, was a member of Belt Lodge No. 18, A. F. & A. M. of Kerby. Grants Pass Masonic lodge was in charge of the services. Mr. Covey was a member of Stillwater Lodge No. 616, Dayton, Ohio.



CHURCHES

CAVE JUNCTION COMMUNITY CHURCH

George H. Gray, Pastor
Sunday School at 10 a. m.
Morning Worship at 11 a. m.

There will be a covered dish dinner at the church, Friday at 7 p. m. All members are urged to come, and friends of the Church are cordially invited.

There were 135 present in Sunday school.

Rev. Gray's sermon "Spiritual Advancement" was taken from Eph. 4th Chapter. This followed the same trend of thought as the January 2 sermon which was "Goals." He said in part "God measures our Christian life by our conduct, prayer life, communion with God and giving of our goods." A Christian must learn to evaluate spiritual things.

The Junior Choir sang "Yield not to Temptation" and dedicated the chorus to Mrs. W. A. Brown.

SELMA BAPTIST CHURCH

Rev. Anderson, Pastor
Church service at 9:30 a. m.
Sunday School at 10:45 a. m.
Youth People at 7:00 p. m.
Prayer Meeting Tuesday 8 p. m.
Missionary Society 4th Wednesday of each month.

CHURCH OF JESUS CHRIST OF LATTER DAY SAINTS

(Mormon)
Sunday school, 10:30 a. m.
American Legion Hall, Cave Junction.

THE ILLINOIS VALLEY GOSPEL TABERNACLE

Rev. Delbert H. Burger, Pastor.
Sunday School at 10 a. m.
Morning Worship at 11 a. m.
Children's Church at 11 a. m.
Sunday evening service 7:30.
Young People's meeting, Thursday at 8 p. m.

ASSEMBLY OF GOD

Kerby, Oregon
Rev. D. B. Wantland, pastor
Sunday school 10 a. m.
Sunday worship, 11 a. m.
Evangelistic service, Sunday, 8 p. m.
Wednesday prayer meeting ..7:30
Bible Study and Young People's meeting, Friday7:30 p. m.

CATHOLIC CHURCH

Rev. A. A. Meyer
Mass offered at 12 o'clock noon on first and third Sunday of each month at Cave Park Motel.

ILLINOIS VALLEY CHURCH OF SEVENTH DAY ADVENTISTS

Sabbath School9:30
Church service11:00
Prayer meeting Wednesday.

CHURCH OF CHRIST

Preaching every Sunday morning at 10:30. Communion service immediately following at the home of J. S. Bedingfield on Cemetery road. Preaching at 6 p. m. Sunday at the Sawdust Club house at Moore's mill. Everyone cordially invited to attend all these services.

BRIDGEVIEW COMMUNITY CHURCH

Pastors: Rev. A. E. Little
Rev. E. M. Borger
Sunday School 10 a. m.
Morning Worship 11 a. m.
Evening Service 8 p. m.
Prayer and Bible Study, Wednesday, 8 p. m.
Young Peoples Service Friday at 7 p. m.

Watch Repairing

See

J. L. NEILSEN

Watchmaker and Jeweler

105 South 6th St.

Grants Pass, Oregon

Automobile Accessories

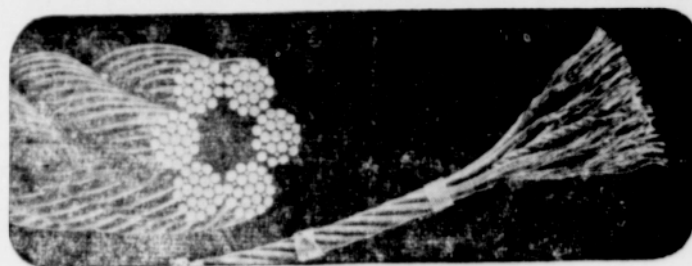
Keep your car in good condition for winter driving—Come in—Let us help you keep your car well! It's powerful good insurance!

RIVER'S EDGE GARAGE

Greene & Fisher
Phone 1009
CAVE JUNCTION

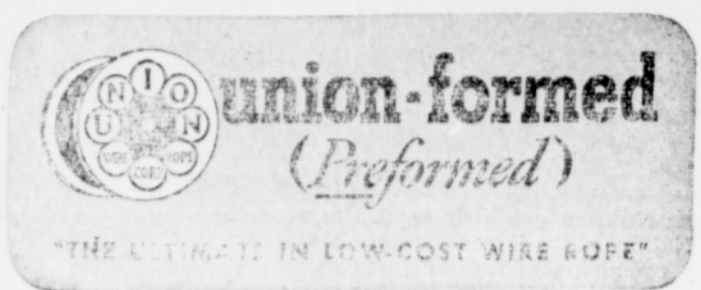
Try the Classified Ads in The News. They pay dividends.

Send The Illinois Valley News to Your Friends



Which Wire Rope Is Best?

Although initial cost of preformed wire rope is somewhat higher, it is our experience from actual operation that it affords the biggest value.



For Union Wire Rope service call on

ILLINOIS VALLEY HARDWARE

The Hamiltons, Myo and Bill
Cave Junction, Oregon

« OPEN »

Bill Farlien now has his Repair Shop open and ready for business in his new location—behind the Legion Hall

AUTOMOBILE REPAIRING
ELECTRIC and ACETYLENE WELDING
AUTO PARTS and ACCESSORIES

BILL FARLIEN

NEW OWNERS

We have purchased the Associated Service Station from Mr. and Mrs. W. C. Kennedy, and hope to give the valley patrons the same courtesy and treatment that you have enjoyed in the past.

Associated Service Station

Mr. and Mrs. L. R. Best

BRING YOUR CAR TO MUFFLER HEADQUARTERS



IF YOUR MUFFLER LOOKS LIKE THIS



For FREE INSPECTION SERVICE



YOU NEED THIS



NEW Ford MUFFLER

A New Muffler Provides Power and Economy

If your car muffler is clogged, the excessive back-pressure created can substantially reduce power and efficiency. A new muffler corrects this, saves vital gas and is safer and quieter.

Don't take chances

with a leaky, clogged, worn-out muffler. It's dangerous and cuts down the efficiency of your engine, and can waste precious gas. Let us inspect the exhaust system on your car. If you need a new muffler, we'll install a Genuine Ford muffler promptly at small cost. A new muffler will make your car much quieter, much safer to drive.



Bell Motors, Inc.

PHONE 2101

GRANTS PASS, OREGON

INSULATE

Your Home

Protect It from Severe Weather and Fire

Stop expensive heat loss in your home. Have it insulated with Rockwool. According to government research almost 50 per cent of the heat leaks out of uninsulated homes during winter. Rockwool insulation prevents this waste and passes the saving on to you.

Rockwool insulation gives you proof against the spreading of fire. It localizes fires by stopping the spread of flames. So let Rockwool bring added safety to your home. It is fireproof. It can't burn.

Compare the cost. You'll find that in economy and efficiency Rockwool is the best. It is now reducing the fuel budgets of innumerable families throughout the United States. Let it do the same for you.

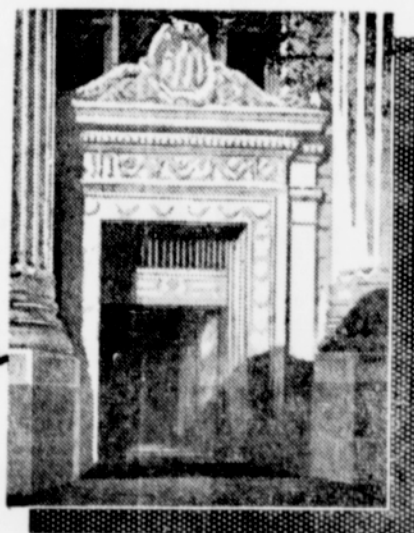
Why lose Almost 50% of expensive Home heat?

Builders Insulating Co.

711 East I Street

Phone 2175

Easy terms As long as Three Years to pay.



CONDENSED STATEMENT OF CONDITION

December 31, 1948

RESOURCES

Cash on Hand and Due from Banks	\$ 146,239,773.17
United States Government Bonds	254,704,302.47
Municipal and Other Bonds	35,569,781.36
Loans and Discounts	142,928,822.34
Stock in Federal Reserve Bank	600,000.00
Bank Premises (Including Branches)	7,305,187.76
Customers' Liability on Acceptances	465,333.10
Interest Earned	1,560,080.89
Other Resources	1,671,059.12
	<u>\$ 591,144,340.21</u>

LIABILITIES

Capital	\$ 10,000,000.00	
Surplus	10,000,000.00	
Undivided Profits and Reserves	10,592,524.66	30,592,524.66
Reserves for Interest, Taxes, etc.		2,296,264.17
Acceptances		465,333.10
Dividends Declared		250,000.00
Deposits		556,613,608.85
Interest Collected not Earned		844,598.34
Other Liabilities		82,011.09
		<u>\$ 591,144,340.21</u>

This statement includes 16 branches in Oregon. HEAD OFFICE: PORTLAND, OREGON

GRANTS PASS BRANCH

DIRECT BRANCH OF
THE UNITED STATES NATIONAL BANK OF PORTLAND
AN OREGON BANK
SERVING OREGON

The UNITED STATES NATIONAL BANK

OF PORTLAND, OREGON

Member Federal Deposit Insurance Corporation