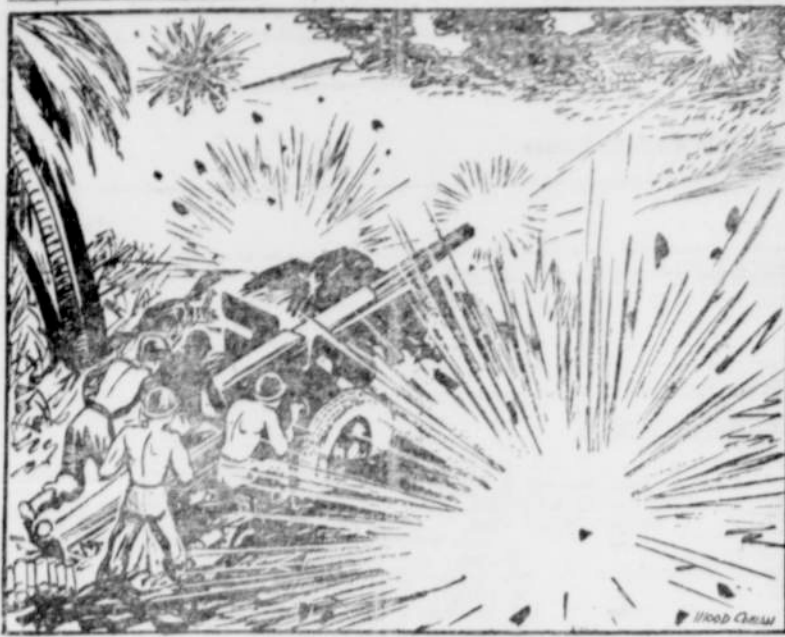


AMERICAN HEROES

by WOODY COWAN



JAPS threatening a vital position in the Solomon Islands were thwarted largely through the leadership of Staff Sgt. Floyd E. Hill, Marshville, N. C., who has been awarded a Silver Star posthumously. As leader of an antitank section, he was ordered to support a rifle platoon and to have his positions dug and ready when the enemy struck. The big gun that War Bonds helped to provide for those men was ready when the Nips struck. Sgt. Hill, wounded, helped his men to completely rout the enemy.

U. S. Treasury Department

CENTRAL PLAN FOR "BULL BLOCK" SET BY STATE DAIRIES

Oregon dairymen have taken preliminary steps to establish a statewide program of artificial insemination in line with plans found successful in other states and which are rapidly being adopted elsewhere, announces Harold Ewalt, assistant extension dairy-

man at Oregon State College. Under such plans all bulls used by members in any part of the state would be kept at a central location under the care of trained veterinarians and technicians who would care for the animals and dispatch the material to county groups as called for. Only an office with one technician and necessary office help would then be maintained by each of the county groups, Ewalt explains.

HELP WITH FARM TRANSPORTATION BY AAA NEAR END

Servicing of county farm transportation committees by AAA committees will be discontinued June 30, reports R. B. Taylor, chairman of the state AAA committee. Funds allotted to AAA to handle the farm transportation program will be expended at the close of the fiscal year, and additional funds to continue the program were not provided by the federal bureau of the budget.

After June 30 applications for farm trucks and for farm gasoline will not be filed at county AAA offices. Farmers will apply directly to local or state ODT and OPA offices after that date. AAA committee authorizations for conversion of tractors and other farm implements from steel to rubber also will be terminated.

AAA was assigned responsibility of farm transportation programs shortly after gasoline rationing was instituted in 1942. Between 40,000 and 50,000 farm gasoline applications and appeals and about 1,000 new farm truck applications annually have been filed with county AAA offices. Although decisions were made and policies set by county farm transportation committees, the detail work of preparing forms and processing applications was handled by county office staffs. Additional personnel was employed in most counties to handle this work, Taylor pointed out, hence the withdrawal of funds makes it impossible to continue.

The state AAA chairman expressed appreciation for the work of the farmers who served on the county farm transportation committees without compensation. The committees were headed by one member of the county AAA committee assigned to the transportation programs.

ONE LIGHT CARS CAUSE ACCIDENTS

Accidents reported as a result of drivers and pedestrians becoming confused by cars with but one headlight functioning at night today were cited by Secretary of State Robert S. Farrell as evidence of the need for greater attention to headlights as a safety factor on the highways and streets at night.

Farrell said that in one case, a pedestrian was struck when the person on foot mistook the single light of an approaching car for the outside light when it was the inside light that was functioning. In other cases, approaching drivers have been confused and failed to give adequate clearance for approaching cars, proceeding with but one headlight functioning.

"One headlight cars are a definite accident hazard on our streets and highways at night and drivers should make every effort to avoid causing these hazards," Farrell said.

The secretary of state urged all drivers to check their lights regularly, to make sure both lights are functioning and that they are properly adjusted.

"Improperly adjusted headlights also constitute a serious accident hazard, because they may blind the approaching driver or pedestrian," he said.

BUY WAR BONDS



PLAY SAFE

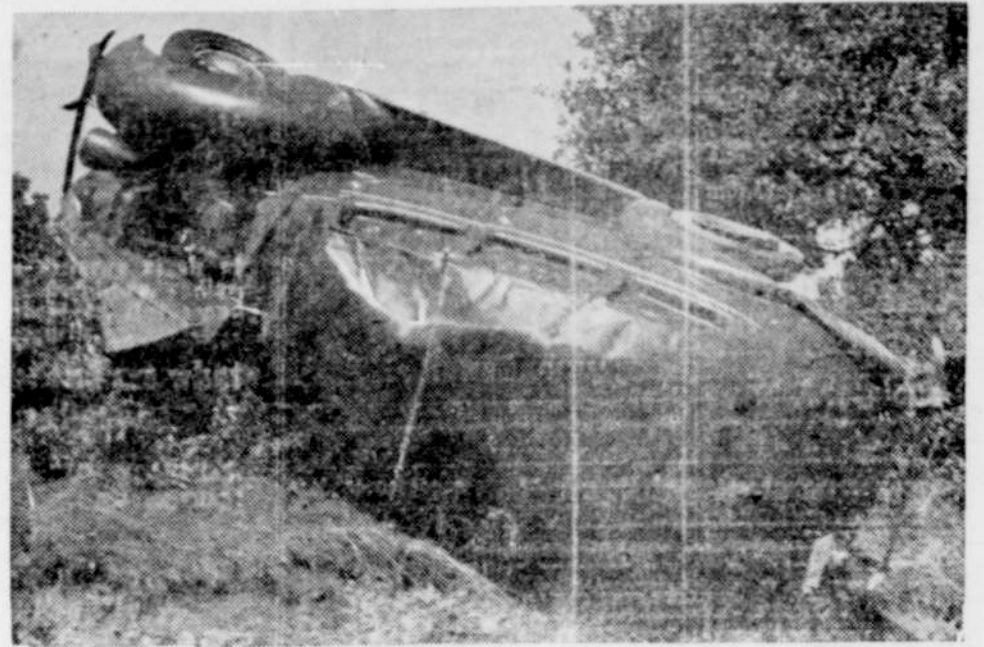
When you store your home or business furnishings, enjoy the assurance of fireproof protection PLUS insurance.

WE HAUL ANYWHERE
Just call and we will pack, deliver and place furniture in your home.

AGENT BEKIN VAN LINES AND SYSTEM FREIGHT

ISHAM'S
Transfer & Storage

413 East G St. Phone 124
Dave Franklin Carl Beltz



..and no NEW one to replace it

Since Pearl Harbor, thousands of cars have been placed on the scrap pile every year — hundreds every day! There is a shortage of cars. Returning Veterans and essential users will rightly get first priority on new cars.

REMEMBER THIS

When you hear optimistic reports about new cars this year!

PLAY SAFE

Bring your car to us for a complete check-up. Have your motor tuned up . . . wheels aligned and balanced . . . All those things done that you have been putting off.

THEN YOU WILL KNOW

That your car will last until you CAN get a NEW ONE . . .

IT MAY BE A LONG TIME!

Hannum & Kelt Chevrolet

411 South Sixth St.

Phone 520

Grants Pass

Ella's Beauty Salon

WILL OFFICIALLY

Open Monday July 1

FEATURING THE VERY LATEST
IN HAIR STYLING

Appointments Accepted Any Time After
JUNE 25th



Greyhound BUS SERVICE

FROM CAVE JUNCTION

Greyhound Daily Service

NORTHBOUND

Grants Pass, Portland, Seattle
and all points north.

Arrive Cave Junction 5:55 p. m.
Leave Cave Junction 6:05 p. m.

SOUTHBOUND

Crescent City, Eureka, San Francisco
and all points south.

Arrive Cave Junction 11:15 a. m.
Leave Cave Junction 11:25 a. m.

Agent: K. C. HAMILTON

Depot: CAVE JUNCTION MOTOR
COURT

SERVING ALL THE WEST WITH DEPENDABLE TRANSPORTATION



GREYHOUND

Used Furniture - - -

York's Trading Post

Camp U-Rest

COOK STOVES

GOOD TOOLS

HEATING STOVES

DAVENO DAY BEDS

CHEST DRAWERS

CREAM SEPARATOR

TABLES, BEDS

CAMPING TRAILER, Sleeps 4

RESTAURANT FIXTURES

Standard Oil Products

Come in and look around. We may have what you need!
WE PAY CASH FOR USED FURNITURE!

Building Material

DOORS

SHEET ROCK

WINDOWS

ROOFING PAPER

NAILS

CEMENT

PAINTS

BRICK SIDING

KEM TONE

COMPOSITION SHINGLES

FIR TEX

FIRTEX PLANK

CARBOLENIUM