



The First National Bank of Southern Oregon

Grants Pass

Capital, Surplus and Undivided Profits . \$90,000

Transacts a general banking business. We endeavor to merit your patronage by courteous and efficient service

L. B. HALL, President
 J. C. CAMPBELL, Vice-President
 H. L. GILKEY, Cashier
 R. K. HACKETT, Asst. Cashier

40 MILES of Irrigation Canals

Are being constructed here

It Means:

Apples
 Peaches
 Pears
 Grapes
 Melons
 Berries
 ALFALFA

These mean Fortune, Health and a Sunny Smile 365 Days Per Annum

I can locate you on any sized tracts from one acre up to 300 acres at prices all the way from \$50 to \$300 per acre.

The crop off these lands will pay for themselves every year

H. L. Andrews
 GRANTS PASS, ORE,
 Masonic Temple, Suite 4

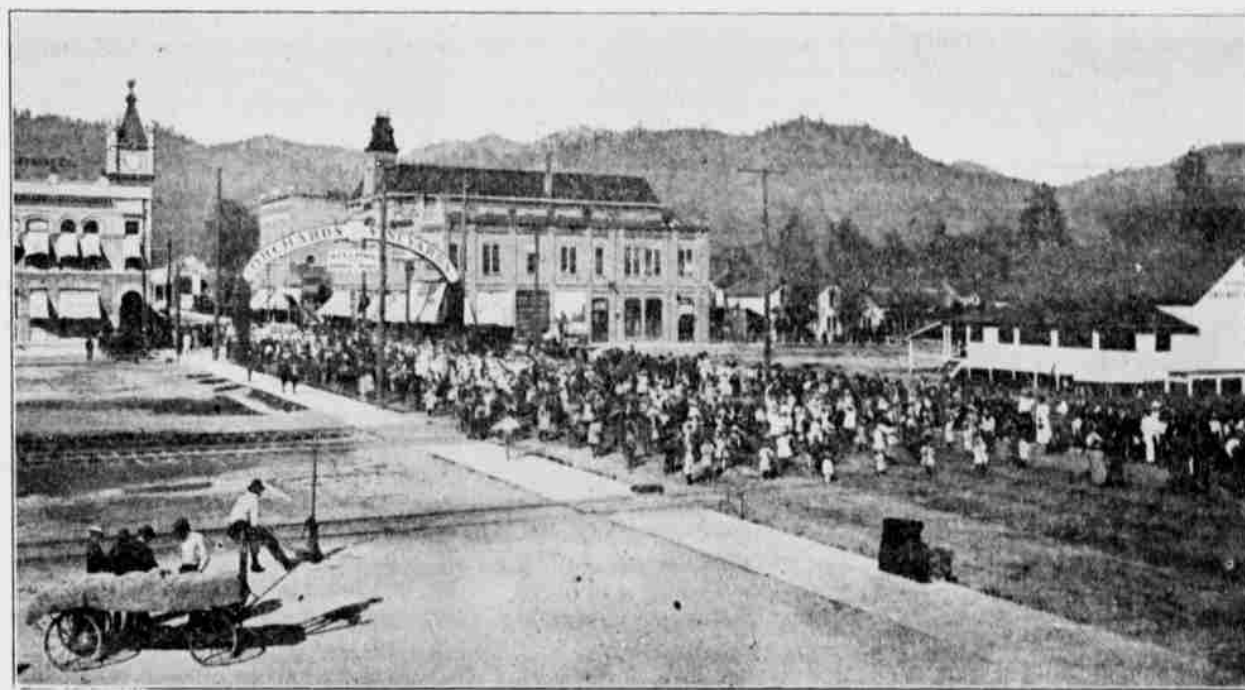
TWENTY-FIVE YEARS AS A FRUIT GROWER

Experience in the Cultivation of the Apple, Pear and Peach in Josephine County.

(By John H. Robinson.)
 Editor Courier: As I have had 25 years experience in fruit growing I will give your many readers some of the reasons why I think the Rogue River valley is destined to become one of the greatest fruit growing sections of the Pacific Northwest.
 Our climatic conditions are such that we can raise to perfection all the fruits, large and small, grown in the north half of the North Temperate zone.
 I am told by many people from different parts of the United States that they have never eaten any peaches anywhere that excelled those grown in our valley, either in size or flavor.
 While at the World's Fair in St. Louis in 1904, being interested in fruit growing myself, I took special pains while going through the Horticultural and Agricultural buildings to observe the display of fruit from the various parts of the United States, and I did not see anything that excelled our apples, peaches, pears, prunes or grapes.
 I have gathered apples here one

than Grants Pass might point to with pride. These three buildings, capacious though they are, will not meet the demands of the rapidly growing school population, and at a recent school meeting the sum of \$7000 was voted for enlargement.
 The corps of 25 teachers, counting the superintendent, Prof. R. R. Turner, is an exceptionally fine body, and the work being done in all departments is of a high order. The High School is doing high-grade work and in all departments below university and college the educational facilities afforded by the schools of Grants Pass will not suffer by comparison with those of the best in the large cities.
 With regard to the churches, we have our full quota. There are two Methodist Episcopal, North and South, a Baptist, Presbyterian, Episcopal, Disciples, Adventist and Roman Catholic.
 In no city do the prominent business men take a more active part in the work of the church than here. The mayor is superintendent of one Sunday school, the cashier of the 1st National Bank of another, the assistant cashier of still another. The churches are prompt to co-operate in looking up and relieving all cases of actually suffering and necessity, and they work shoulder to shoulder for moral purity and civic righteousness.
 There is a live ministerial union where all the evangelical meet on Monday mornings for fellowship and

tion insures good prices to the fruit grower and the farmer for their products.
 Josephine county five-acre fruit farms will make a handsome living for a family and in ten years lay the foundation of abundant wealth.
 Stop over at Grants Pass and see the country that is now being placed under irrigation. If you are a home-seeker do not fail to see the cheap lands which can now be secured. This is your opportunity and it will be your fault if you do not take it.
 Take a bite of one of those delicious Spitzenbergs growing near Grants Pass. For size, flavor and delightful coloring they lead the world. Or try a Jonathan, a Winesap, a Baldwin or Arkansas Black, and note their splendid coloring and flavor. Then come to Grants Pass, the home of the red apple, and feast on the fat of the land.
 The easiest place in the world to make an honest living is Josephine county near Grants Pass. It is the land of sunshine, productive farms, prolific orchards and the natural home of small fruits. Stop over at Grants Pass as you are passing through the country.
 The United States Weather Bureau says: "The district known as Southern Oregon is the most delightful portion of the state." For soil that will produce excellent returns and with a climate exceptionally delightful the Rogue River valley excels.



(Photo by Grants Pass Art Studio) SHERMAN PRESENTING TOKAY GRAPE VINES TO SCHOOL CHILDREN

fall and kept them in very good condition, not in cold storage, till I gathered apples from the same trees the next fall.
 I set a small peach orchard 25 years ago and have sold peaches from the trees every year but one for the last 22 years.
 My peach trees for the last 18 years have netted me, on an average, over \$200 per acre, and some years over \$400 per acre. My pears have done nearly as well, and the Spitzenberg and Newtown Pippin apples for the last few years better. From one pear tree last season we gathered 1040 lbs of merchantable pears, and the season before over 1000 lbs, which sold for 2c to 4c per pound.
 In 1907 we received a letter from Soble & Day, commission merchants of New York, that our Newtown Pippin apples, grown on second bench red land, non-irrigated, were too large for the London market.
 My experience and observation has been that the sandy loam and red loam grow our best fruit, but that at an elevation of 100 to 500 feet the fruit is freer from frost. Being surrounded by hills and mountains we have less wind to blow off the fruit while maturing than in an open country. Our warm sunshine and peculiar atmospheric conditions during the latter part of the growing season gives a color and flavor to our fruit that the better it is known the more famous it becomes.
 Apples packed in our packing house the same season were shipped to New York, London, Honolulu and China. About two-thirds of the way around the earth. Hence we might say we have the world for a market for our winter apples.

to discuss the physical needs of the needy, the moral needs of the city and to plan for a more harmonious and effective work along the lines of effort that properly belong to the church.
 Grants Pass is not only a city of schools and churches but one where there is a most complete harmony of effort in the work of making good citizens.
IMPORTANT POINTERS IN SMALL SPACE
 By settling in the Rogue River valley you will escape the hard winters of the eastern and middle states and enjoy the finest climate in the United States.
 The climatic conditions around Grants Pass are all that could be desired. The weather is always mild, winter and summer. There are no thunder storms or violent tempests. The thermometer in the coldest weather rarely reaches as low as 20 degrees above zero.
 Grants Pass has a big fruit and vegetable cannery and this institu-

COLUMBIA LIFE & TRUST COMPANY
 of Portland, Oregon
 DIRECTORS
 WM. M. LADD, Portland, Ladd & Tilton, Bankers.
 THEODORE B. WILCOX, Portland, Portland Flouring Mills.
 WALTER MACKAY, Portland, Capitalist.
 RICHARD WILSON, Portland, Capitalist.
 RICHARD R. HOGE, Portland, Carnegie Steel Company.
 R. L. McCORMICK, Tacoma, Weyerhaeuser Timber Company.
 C. J. SMITH, Seattle, Capitalist.
 EDW. COOKINGHAM, Portland, Vice-President Ladd & Tilton Bank.
 S. B. LINTHICUM, Portland, Attorney.
 S. B. LOCKWOOD, Portland, Vice-President and General Manager.
 R. B. BROWN, General Agent Grants Pass, Oregon

Money-Making Real Estate
 at owner's price
YOUR CAPITAL will increase rapidly in size if you invest in
Rogue River Fruit Lands
 Investigate and be convinced. It is worth your time
H. B. Hendrichs & Son
 Grants Pass, Ore. 6th and G Sts.

Farm and Fruit Lands
 When you come to Grants Pass call on
H. L. Herzinger
 The Real Estate Dealer
 415 Front St. Grants Pass
 I can locate you on a good homestead. Also have some fine timber tracts for sale

Maxwell Automobiles
 Seven Models
 Prices from \$500 to \$1750
 Maxwell cars are simple, durable, speedy, reliable, a good hill climber and very economical. Are easy to operate and absolutely dependable.
F. B. Olding
 306 N. 6th St.
 Grants Pass . . . Oregon

General Grant discovered the Rogue River Valley
 and the beautiful city which now bears his name, in the early fifties. If it was good enough for him in those days, it is good enough for YOU NOW.
 I have lived here nearly 25 years and know the history, value and possibilities of every tract of good Farm and Fruit Land in this famous and productive valley.
 By consulting me before buying, you will profit by my long experience and intimate knowledge of the economic and other conditions existing here.
Tom Galvin
 Real Estate Grants Pass, Oregon
 Information for the asking

"She can look out, but you can't look in"
TRADE Vudor MARK
PORCH SHADES
 Make your porch cool, airy, shady, private.
 Another good feature about them is the peculiar fact that those sitting on the porch can see out, but passersby cannot see in. In other words, you have complete privacy, and can use the porch or veranda the same as an inside room, with infinitely more comfort on hot days.
 Sold only by
R. H. O'Neill
 The Home Furnisher

GRANTS PASS A CITY OF SCHOOLS AND CHURCHES
 One of the first questions asked by the man of family when contemplating moving to a new place is: "What about the schools and churches?" Nearly every letter from prospective settlers contains this question; and there is no question of the many asked that will afford us greater satisfaction to answer.
 The High School, East Side and