

Rogue River Courier.

VOL. XXI.

GRANTS PASS, JOSEPHINE COUNTY, OREGON, FRIDAY, MARCH 2, 1906

No. 48.

GEM OF FAMOUS ROGUE RIVER VALLEY

**Josephine County Rich in Mines
Fruit, Timber, Stock, Dairy-
ing and Water Power.**

Josephine is the pioneer mining county of Oregon, and four-fifths of the area of the county is mineral. Quartz and placer mines being operated in almost every portion within her borders. Notwithstanding the fact that gold was known to exist here in abundance as far back as 1851, there is still vast deposits so far undeveloped. There being at the present time 10 prospects of merit compared to every one in the course of development. The fact that the procuring of the precious metal demands the investment of capital has held back to some extent this industry, but as returns from operating properties show conclusively that the deposits are lasting, investors are feeling more confidence in taking hold of the various propositions open. There are located here some of the best producing quartz mines on the Pacific Coast, and yet this feature of the mining industry is in its infancy. There now being something over 150 quartz properties in operation. There has been a number of finds of exceptionally rich deposits, as is natural in any mining locality. The vast acreage of old channels, gravel bars, etc., combine to make this one of the leading hydraulic mining districts in the West. The season of mining is exceptionally long as a rule, and the water supply and diggings are abundant. The output of the many surface mines total a large sum in virgin gold, and owing to the fact that there are no restrictions in the matter of dumping tailings and debris into the streams of this section, the placer mines are

given every opportunity for unobstructive operation.

Strange as it may seem there are still abundant chances for the unexperienced locator to avail himself of an opportunity of discovering property so far untouched, from the sim-

quick producing parts of the country, passing and re-passing many claims which could be made to yield returns. The genuine quartz prospector has been late in coming, and he is now finding Josephine the bonanza land of his dreams, the field being only sparsely located, and but little prospected. There are some 25 mines equipped with mills, thus giving employment to a large number of people who follow this line of endeavor. And there are mines here producing more each month than the original purchase price.

The only possible drawback to the full development of the mining interests of any community is power, and in this respect Josephine county needs

county the returns from a copper mining district of which the Northern California copper section is merely an extension. Ours being the source of the renowned Takilma district, where there is in operation a 150 ton smelter, erected by the Takilma Smelting Co. This plant is in operation throughout the Summer, and the product is hauled to Grants Pass for shipment. The railroad above mentioned will lead to this point, and the line will undoubtedly be built this year, as there is already interested in its completion every merchant of prominence in the city. With its construction a vast section of mineral, agricultural and timber area along the Illinois and Applegate

**Grants Pass, the Metropolis of
Southern Oregon, a City
With Brilliant Future.**

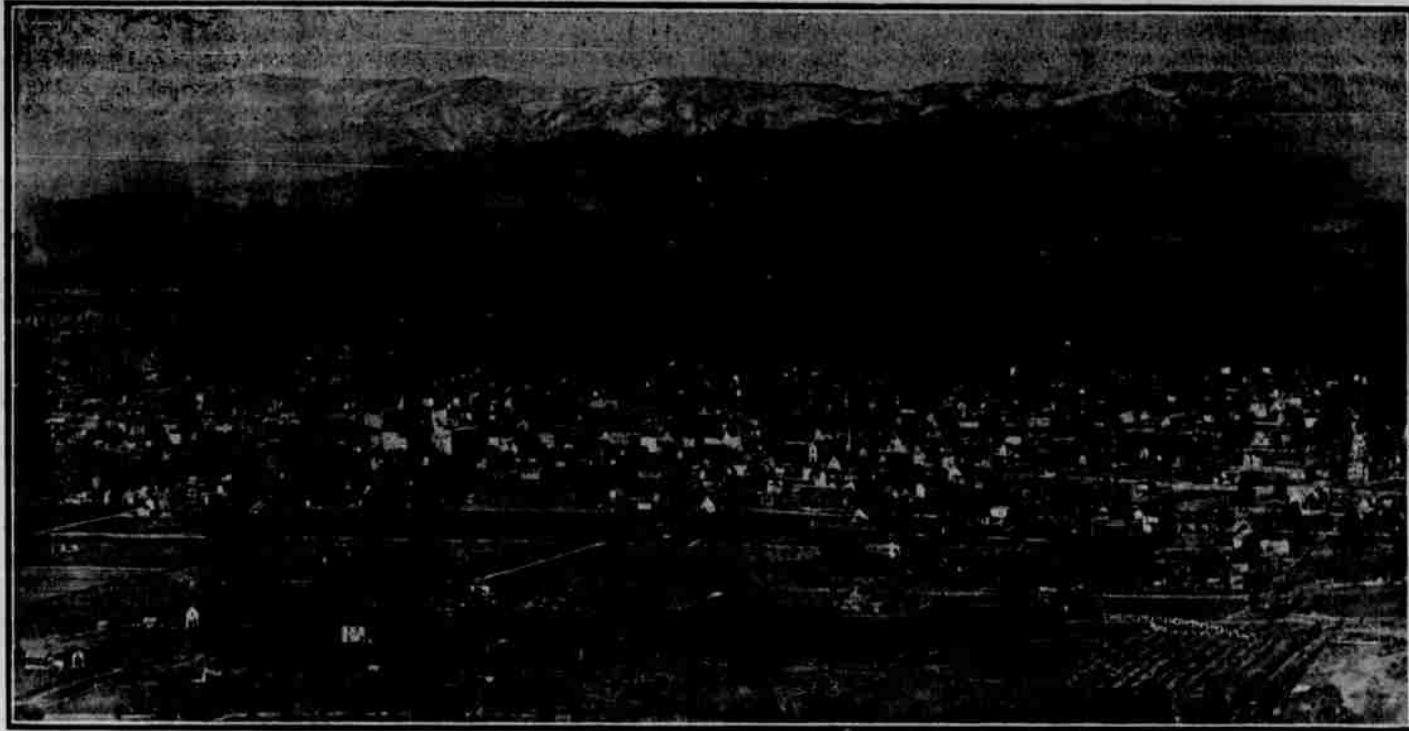
Grants Pass is situated in a county which is unequalled in climatic conditions and possibilities of development in every line of industry, and is a city of 4000 inhabitants, located on an ideal spot on the banks of the Rogue river. It is one of the principal points

near quite metropolitan to the party entering this section with the idea of viewing only country stores. In the public improvements and utilities, the progressive spirit has dominated, this city possessing more miles of streets that are easily passable to vehicles at all seasons of the year than has any other town in this section of Oregon. The sewage system is without question a very complete one, and not only installed with an idea of amply providing for present needs, but with allowances for future possibilities in growth. The city is well lighted with electricity and the water system is installed and operated in a thoroughly modern manner.

As regards climatic conditions too much cannot be said in favor of our home land. All people have, no doubt, read that Oregon has but two seasons—a wet and a dry one. The famous Oregon rain that Eastern people believe keeps pouring constantly, is an objection which quickly vanishes upon the acquaintance of the numerous attractions counterbalancing it. Storms are almost unknown, as our rain comes in a gentle, steady way when the most needed, and is not accompanied with any unpleasant electrical disturbances. The region is not a windy one, the majority of the days throughout the year when there is wind, it is quite light, and not of the disagreeable, stormy sort. Blizzards are unknown, and while in the East heavy, wintry weather is being reported, we are enjoying serenely pleasant showers with hours of sunshine, and we can boast of blooming flowers on our lawns. Sleighs and cutters are not used by our citizens, as we would very seldom have a chance to uncover them, as whatever snowfall we have melts very quickly on account of the warm earth, and at best we are seldom favored with a sight of over an inch of it at a time. The summer period of the year being such as to make this county an ideal resort; the days being bright and balmy, and the nights cool and refreshing.

The possibilities of this section for fruit growing have never been fully comprehended, but there are a large number of people who have interested themselves in this line with abundant success and much profit. Berries of all kinds do well and when arrangements are made for supplying water, abundant crops can be produced from the month of May until the month of November. Although this period is what may be termed the dry time, yet this is no drawback of consequence if one wants to equip himself for carrying on the culture of small fruit, as water may be secured in almost any locality by the sinking of wells, and the use of gasoline or electric power

(Continued on page 8.)



BIRDSEYE VIEW OF GRANTS PASS.

ple fact that former prospectors have confined their efforts chiefly to the

have no fear, as it has been officially stated by United States representatives who have covered the ground that there is enough power on the rivers and creeks of Josephine county, were they harnessed, to turn every wheel and roll every car of the factories and trains of Oregon. These rivers are turbulent and maintain a high flow the year around, and their rapid fall allows the placing of power dams at frequent intervals, and there is no question but that in time this method will be pursued. In fact, three is within three miles of Grants Pass one such dam already built by the Golden Drift Mining Co., it developing 500 horsepower, which is used in pumping water to the company's placer mine near by. Without question mining is the resource of which we are most proud, as we naturally should be for the large amount of mining property located at our very doors entitles us to considerable pride in its possession. It only awaits the invasion of parties controlling capital sufficient to place it upon the highest plain of development at which time Josephine will be without question the wealthiest county in the state of Oregon, if not in the West.

And while this branch of our resources is being developed, we can at the same time supply the world with many millions of feet of lumber from the timber resources, which are a close second to the mines as a source of wealth. Fully one-fourth of the area of the county is a forest yet untouched by the lumberman. It is a magnificent and thrifty growth, abounding in pine, fir, oak and cedar. The pine lumber is that known as sugar pine, and yellow pine, both of which are most extensively used and found to be a very superior grade of lumber for all purposes, while the value of fir, oak and cedar are well known to the world. There are millions of feet of laurel timber, which when seasoned is as hard as maple, and takes a polish equal to the rosewood, it being used now in the most expensive furniture, and no doubt in the near future it will be indispensable to the lumber manufacturers.

One can look forward and see in Grants Pass the building and operation of furniture factories equal in renown to Eastern centers. Owing to its location, Grants Pass is the headquarters for a vast timber region and the coming railways, which are at the present time being rapidly arranged for by home capital, will touch not only all points wealthy as timber is concerned, but will open up in addition the richest copper belt in the state of Oregon, and give to this

Rivers will be added to be many desirable sections open for settlement. It is only within the last few years that attention has been drawn to the fact that in addition to gold, copper, etc., Josephine county possesses many rare metals. For years the miners of gold have been passing over rare deposits of platinum and of also a nickel-iron compound, which has been given the name of Josephinite, so called from its having first been found in Josephine county. Geologists believe that this new metal will prove to be the source of considerable value.

So far there has been but very little interest manifested in gold dredging, yet it has been shown by systematic prospecting that there are immense tracts of gold bearing lands that can be dredged successfully. The operation of dredgers in adjoining counties is sufficient proof that gold dredging may be made a most profitable industry.

There is no question but that the present industrial status of Josephine county represents but the opening chapter of a volume of progress. There is without question a golden future in store for all conservative people who are willing to invest capital sufficient for the development of the abundant resources here contained. And the next decade will doubtless see many additional enterprises in every line of endeavor. The gold mines now in operation demonstrate what can be done along that line. The copper smelter shows a brilliant future for that mineral. The history of every county blessed with abundant timber gives us the satisfaction of knowing what to expect from this resource at the time of the coming opening, which cannot be in the very far distant future. Today these opportunities are only half realized or appreciated, and there is no question that the natural advantages herein offered will be utilized by far-seeing business men, who are always on the outlook for places so richly endowed. The time is fast coming when the thousands of acres of unoccupied mountain land will be stocked with sheep, goats and cattle, and stock raising, now an infant industry, will be developed until it becomes one of our greatest sources of wealth.

A Hornbrook correspondent writing to the Yreka Journal under date of Feb. 12, says: "Jim Mann struck a pocket near here last week, and has already taken out with a hand mortar \$1200; there is a lot more in sight, and it shows no sign of giving out. The ore carries considerable quartz, and may turn out to be a milling proposition when developed."

on the main line of the Southern Pacific railway between Portland and San Francisco, and its recognized as the natural distributing point for a large territory.

Fifty years ago only a few scattered cabins dotted the valley now developed into one of the most productive localities in Southern Oregon. Grants Pass has a life just 23 years in length, and in that time through the thrift and energy of its citizens has grown to its present promising proportion. It is the scene of more substantial and well constructed business houses than any city of its size in the West, there being few establishments which cannot boast of not being housed in a brick structure. The business men are ever alert to the opportunities presenting themselves, and so far as possible fill every demand which presents itself. But here are so many openings demanding capital, that the field is a most inviting one to the investor of either large or small means.

Grants Pass possesses the most beautiful townscape in Oregon. It is not the product of a boom, but the growth that comes of its being the trading point and headquarters of a rich section of country. The demands of a large and growing trade make it possible for the merchants to carry such stocks as ap-

I Sell Real Estate



Agent for

- U. S. Fidelity & Guarantee Co.
- Equitable Savings and Loan Assn.
- Fire Insurance.
- Lloyds Plate Glass Co.
- Phillips Hydraulic Rams.

MY RECENT SALES

- 100 Acres near Rogue River west of town to O. Shattuck.
- 60 Acres River Bottom east of town to Sharp Bros
- 2 Business lots on Front St., to Mrs. S. Loughridge.
- 2 Business lots on Sixth St., to Robert Hower.
- 2 Residence lots on 9th St., to J. O. Sandburg.
- 3 Residence lots on 9th St., to M. T. Galvin
- 2 Lots and six room dwelling on F St., to Mary Longenecker.
- 2 Residence lots on 7th St., to J. D. Drake

SOME GOOD PLACES NOW ON MY LIST

- A 28 acre River Bottom Hop Farm in fine state of cultivation, close to town, for only \$2900.
- 9 Acres of good bottom land, good 6 room house, good barn and chicken house, 1 1/2 miles from Grants Pass, for only \$1500.
- 87 acres 4 miles from Grants Pass, 70 acres sandy sediment loam. Balance bench land
- Good 2 story 10 room, plastered house, fine barn, stone cellar, granary, chicken house and several other outbuildings. Good school close to place, 15 acres in choice bartlett pears, Spitzenberg and Newton pippin apples. The trees are 15 years old and in excellent condition and a big crop is expected from them this year. There are 55 acres of the bottom land in Alfalfa and clover from which is cut 3 crops per year without irrigation. Place could be irrigated at a small cost. Price, \$10,000.
- 320 acres 6 miles from Grants Pass, about 200 acres in cultivation, balance in brush and timber. Raised in 1905 about 100 tons grain hay, 1000 bushels of corn and an abundance of vegetables. Large house and good barn. Price \$25 per acre, terms if wanted.
- 160 acres granite timber land 5 miles from Grants Pass. Good 3 room cottage, barn and other outbuildings. This is a good place to raise poultry. Lots of wood for market on place. Price only \$700.

I HAVE STOCK AND POULTRY FARMS
Of all sizes and description at prices ranging from \$500 to \$15,000.

WRITE ME

For illustrated descriptive pamphlet and list.

W. L. IRELAND, "The Real Estate Man"
Ground Floor Courier Bldg. GRANTS PASS, ORE.

A Downpour of Bargains

We are getting ready for the Spring Goods now on the way.

Wall Papers—Handsomeness Ingrain Paper, Heavy Gilt Ceiling and Borders, very rich and decorative. A room 12x15x9 will only cost you \$2.50.

Mattings—17 new patterns just arrived, 20 to 35¢ per yard.

One-Third of Your Life is spent in bed; our Mattresses will make that 1/3 easy; let us show you some of the best mattresses on earth at reasonable prices.

Blue Porcelain Baking Dishes—Special this week, 10c.

Plenty of other bargains.

Thomas & O'Neill
HOUSEFURNISHERS