

Removal Sale

It will be cheaper and quicker to move our stock...

We will continue to sell Ladies and Misses' Shoes at Cost until they are all closed out.

WELCH'S CLOTHING STORE

OPERA HOUSE BLOCK GRANTS PASS, OREGON.

New Goods, More Bargains Auction House.

Best Bed Springs \$1.50 and up Mattresses, best make, 2.00

Fine line of Dry Goods, Notions. Prices that give satisfaction. C. E. McLANE.

THE CELL REAL ESTATE

TEN DOLLAR PER MONTH RENT FIVE DOLLARS A MONTH...

\$6000 Takes up 20 1/2 acres, with good water right.

\$1000 Takes up 10 acres in cultivation; good house and barn.

\$1600 Takes up 10 acres, on Rogue River, about three miles from Grants Pass.

I also have a number of other lands for sale at reasonable prices.

JOSEPH MOSS

Office 516 E. Fifth Street. GRANTS PASS, OREGON.

SEWING MACHINES FROM \$22.00 UP

Prices: \$22.00, 23.00, 24.00, 25.00, 28.00, 30.00, 32.50, 35.00, 40.00, 45.00, 50.00.

C. B. CARDINELL, P. O. Box 302, Ashland, Oregon.

CLEMENS

Drugs & Books

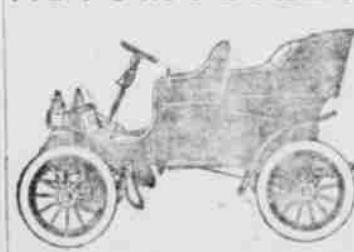
Grants Pass, Ore.

Palace Barber Shop

J. H. MULLEN, Prop. Shaving, Hair Cutting, Baths, Etc.

Everything neat and clean and a work First-Class.

AUTOMOBILES



Will soon be as common as Bicycles and I intend to help some by selling any make of Automobile at wholesale price...

W. A. PADDOCK

SOUTHERN OREGON MINES

Lack of Rain Hinders Placer Operations

C. H. Warwick, whose family has become residents of Murphy, and who came down six weeks ago from Borke, Idaho...

The continued dry weather of this winter is proving a serious handicap to the placer miners...

J. C. Cox, a well known mining man who had been in Grants Pass since the holidays...

C. E. Wickstrom, who is operating a placer mine on Pheasant creek and the largest one in the Evans creek district...

F. E. Eastwell is a miner who has changed his base of operations from Mt. Baker district to Southern Oregon...

A Good Placer on Humbog.

C. D. Smith was in Grants Pass over Saturday for a wagon load of supplies and Sunday he left for his home on Humbog creek...

This mine has been worked by ground sluicing and drifting in a small way for years past...

C. E. Wickstrom, who is operating a placer mine on Pheasant creek and the largest one in the Evans creek district...

New Mining District Opened.

The mineral district about the headwaters of Clifton river, on the border between Josephine and Curry counties...

rough character of the country and its inaccessibility has tended to keep prospectors out and it has been but little prospected until this past year...

The ledge on these claims is a copper and gold proposition, assays giving 10 to 48 per cent copper and 90 cents to \$3 in gold...

Mt. Baldy Miners Busy.

Mt. Baldy, which looms up across the Rogue river valley five miles to the south-east of Grants Pass...

New Mining District Opened.

The mineral district about the headwaters of Clifton river, on the border between Josephine and Curry counties...

opened on Mt. Baldy, I. J. Hunter, a miner of that district, gives the Courier the following facts:

Mr. Hunter is in partnership with A. L. Smith, E. A. Edgar and Wm. Gant in the ownership of two claims that they are now developing.

Edwin Scott and Ed Turner, who have a claim adjoining the claims of Messrs. Hunter & Co. are opening a ledge that prospects well...

I. S. Hours has a claim on the south slope of Mt. Baldy on which he is now at work.

Dr. J. S. Jennings and H. L. Westlake have a claim on the north side of the ledge on which they are having development work done...

Of the present status of development on the principal ledges now being cross-sectioned at regular intervals...

REMOVAL SALE

We are making very special prices on everything from

10 to 50 per cent Discount

Buy now -- a Dollar Saved Is a Dollar Earned.

Thomas O'Neill, The Housefurnishers

Grants Pass, Oregon.

A BIG MINING VENTURE

Sucker Mining Company to Put in Dredger on Sucker Creek.

A mining proposition that has every likelihood of becoming one of the big producing mines of Southern Oregon is that of the Sucker Creek Mining Company...

The land controlled by the Sucker Creek Mining Company has every indication of being very rich in coarse gold...

The land controlled by the Sucker Creek Mining Company has every indication of being very rich in coarse gold...

Prize Voting Contest

IS NOW OPEN

A BEAUTIFUL SILK FLAG

Will be presented by local merchants to the most popular School, Church, Lodge or organization in Grants Pass.

Plan of Contest: The voting coupons are deposited with the First National Bank of Southern Oregon...

COUPONS LIMITED

Each merchant begins with 2,000 coupons, and when the balance of 100,000 coupons are issued the contest will close.

Other very attractive features.

Are shown on the voting coupons and large window cards.

\$10.00

For a good suit of clothes...

GEO. S. CALHOUN CO.

Coupons WILL BE GIVEN AT

Paddock's Bicycle Den.

Dry Goods, Shoes, Umbrellas,

R. O. McCROSKEY.

For Views of

Rogue River and Crater Lake

C. L. CLEVENGER.

THE BIG STORE DRY GOODS CLOTHING SHOES

R. L. COE & CO.

YOU ARE SURE

of good meat cuts if you order from

Plummer & Martin,

City Meat Market.

The Votes

Table with 2 columns: Item and Votes. Includes Eagles, School, A. A. C., Red Men, etc.

H. C. BOBZIEN

THE GROCER Supplies only the best of everything

White House Grocery.

Pay your subscription to

The Rogue River Courier

IF YOU FEEL BAD

ROTERMUND HE SELLS DRUGS.

SPECIAL HALF PRICE CLOSING OUT SALE

MISS IDA WESTON'S

THOMAS & O'NEILL

THE HOUSE FURNISHERS

D. M. DePUY

SWIFT THINGS NUTS CIGARS

Home-made Candies