

The House Furnisher

PRETTY THINGS

We are ready with our stock for the Holidays. We have some of the best goods in our lines we have ever shown. Some of the greatest novelties which have ever been brought here.

A STOCK WORTH SEEING

Note Well These Prices! There may be something here you need or will want before long. These prices are for NOW and spot CASH. BUY AT ONCE if you want to secure them, or mail us your order.



Art Furniture
Separate pieces, well made, and with grace and beauty combined with the price that is not so great. We want you to see them and to come and enjoy our pretty furniture, even if you don't buy.

Rocking Chairs
Long evenings of real comfort for \$1.65 up to \$20.00; an immense variety.

Center Tables
A beautiful array, \$1.00 to \$20.00.



Stands
Usually sold for \$3.00.
Our price \$2.00.

Closets and Kitchen Safes, Desks
A place to do your work.

Cobbler Seat Dining Chairs.
Large full back and shaped seat, regular \$1.75 for \$1.25.

A few odd chairs, regular \$1.65 for \$1.20

Tete-a-Tetes
Solid Quartered Oak, hand polished, upholstered in silk tapestry, regular \$15.00 for \$10.00.

Dining Tables Both Round or Square
Lounges, Couches and Davenport \$5.00 to \$30.00.

Iron Beds, regular \$4.20, at \$2.90
" " " " 4.75 " 3.90

Queensware, choice, neat floral decoration—
44-piece tea set usually \$6.50, this sale 4.50
50-piece dinner set usually 7.50, this sale 5.50
100-piece dinner set usually \$14, this sale \$10

Fine Bohemian Glass Fruit dishes red opalescent regular 60c this sale 35c

Kitchen Helps—Scrub brushes, palmetto Fibre regular 15c, to close 10c
Scrub brushes, Palmetto Fibre, regular 25c, to close 10c

Vegetable or Egg boiler regular 15c to close, 10c
Tin Sauce pans, regular 15c, to close, 10c
Tin bread pans, regular 15c to close, 5c
French Fryers or doughnut cookers, regular 25c to close, 10c

Butter Moulds, regular 15c to close, 10c
Coffee Mills, regular 25c, to close, 10c
Sauce dishes, 6-inch, regular 10c, to close, 7c

Clothes racks, 4-fold, regular \$1.00, to close, 80c
Wall Clothes rack, 6-pin, regular 25c, to close 10c
Tooth picks—not splinters—6 packages for 25c
Clothes pins, 48 for 5c
No. 4, double spring steel traps, regular 85c to close 50c

Lanterns, regular 48c for 25c
Pipe thimbles, 6-inch, regular 50c for 25c
Horse brushes Rice root, regular, 65c for 45c
Horse brushes Fibre, regular 45c for 30c

Linon toweling one line, regular 12 1/2c for 9c
Linon toweling, one line, regular 8 1/2c for 6c
Linon toweling, one line, regular 9c for 7c
Cotton toweling, one line, 5c for 3 1/2c
Linon towels, regular 85c per pair for 90c

CARPETS

With Character.

Here you find Carpets that will wear, that have good in them, and that look well longer than than the ordinary. COST IS NOT GREAT, but the VALUE is there, and the advantage of buying should be understood. We are closing out a lot of numbers regardless of cost. NOTE WELL THESE FIGURES:

One line Carpet, regular price 85c, to close 72c		
Two " " " " 80 " 65		
One " " " " 48 " 32		
Seven patterns in all.		

Remnants to close

One piece 10 1/2 yards, regular 85c, to close 60c		
" " 7 1/2 " " 75 " 55		
" " 7 1/2 " " 1.00 " 75		
" " 9 1/2 " " 50 " 35		
" " 6 1/2 " " 1.10 " 85		
" " 10 " " 85 " 60		
" " 8 1/2 " " 1.00 " 60		



MATTINGS.

One piece 9 yards, regular price 35c, to close 25c		
" " 10 " " " 35 " 25		
" " 2 " " " 28 " 14		
" " 2 1/2 " " " 20 " 10		
" " 3 " " " 18 " 9		
" " 6 " " " 35 " 20		
" " 4 " " " 30 " 15		
" " 10 " " " 35 " 25		
" " 11 " " " 30 " 20		
" " 4 " " " 25 " 12 1/2		
" " 5 " " " 18 " 9		

One lot manufacturer's line sample Rugs, ranging in price from \$1.85 to \$2.75, all 1 1/2 yard patterns and consisting of Moquettes, Axminsters, Wilton velvets and Body Brussels, 25 per cent discount from above prices

USE OUR RUG ADJUSTERS ON YOUR RUGS—hold fast, do not slip.

PUT LINOLEUM VARNISH ON YOUR LINOLEUM—adds life and color.

Portieres—A beautiful display—Rope, Chenille and Tapestry to suit the most exacting.

Lace Curtains—Choosing them ought to be easy from the great assortment we show in exclusive designs, full lengths and widths and at specially shrunken prices, 50c to \$8 pair



WALL PAPER

Nearly two thousand rolls more of specially taking patterns at particularly pleasing prices—7 1/2c to 60c per roll.

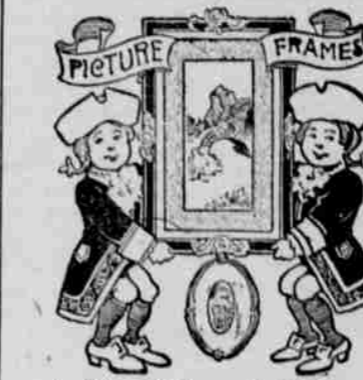
Table Covers—Closing out line regular 75c goods at 60c.

Some exquisite new goods in gobelin art tapestry. Be sure and see this line.

Couch Covers—A good assortment.

Come and See
How close we have figured and the goods will sell themselves, at prices that will enable you to bank money.

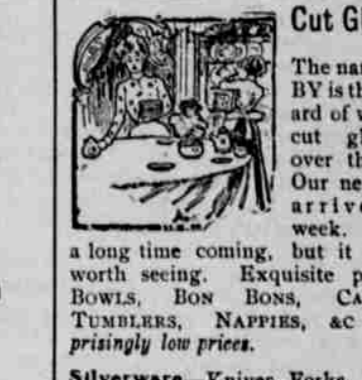
Satisfaction guaranteed.
Money back if you want it.



A Fine Line of Pictures

Closing out at greatly reduced prices—25 per cent discount.

Artists picture easels regular 75c, now 50c
" sketch books 25 per cent discount
" ebbonized panels 25 " "



Cut Glass

The name LIBBY is the standard of values in cut glass all over the U. S. Our new stock arrived this week. It was a long time coming, but it is well worth seeing. Exquisite pieces in BOWLS, BON BONNS, CARAMAYS, TUMBLERS, NAPPIES, &C at surprisingly low prices.

Silverware—Knives, Forks, Spoons, Ladles and fancy pieces. Do not miss seeing these goods.

New Fine Thin China—Plates, Teas.

Carving Sets—\$1.65 to \$9.50.

Clocks—Warranted, \$1.00 to \$6.50.

Stoves and Ranges.
Real Heaters but not fuel eaters.
Air-Tights \$2.90 to \$12.50.

Cook Stoves from the lowest up to the Best Ranges. A fine Steel Range 6 Hole for \$30.00. There's both economy and worth in our Stoves and Ranges.



Lamps

A fine decorated Reading Lamp with decorated dome shade, large burner and chimney, all complete, regularly \$1.25 for 95c.

Heavy Hand Lamps, complete, 25c
Wrought iron umbrella stands \$2.65

You know just what you want and we have pretty near everything that anyone would want for the house.

THOMAS, THE HOUSE FURNISHER, NEXT TO LAYTON HOTEL, GRANTS PASS, OREGON

THE FAMOUS EUREKA QUARTZ MINE

Rich Ore in Unlimited Quantity at the Mine of the Oregon & California Gold Fields Co.

History, Development and Equipment. One of the Best Wealth Producers

One of the Josephine county mines which has passed through the several stages of development by which a prospect grows into a mine and which may be said to have come to maturity, is the Eureka. This mine is now recognized as one of the very best in southern Oregon and is being steadily operated at a profit that should be a good stimulus toward the development of other lodes in this county.

The Eureka mine is located on S. Hill creek, one of the principal tributaries of Tripps creek, a confluent of the Illinois. The mine is situated near the top of the mountain which lies between Soldier creek and the Illinois river, on the headquarters of one of the small tributaries of the main creek. The situation is wild, picturesque and beautiful. Mineral areas so often occur in the dry and dreary desert places of the world that it is both unusual and refreshing to find a country, like southern Oregon, where nature mingles robes and beauty and where the worker after gold may pursue his vocation beneath the waving fans of the evergreen Oregon forests in the balmy air of the pleasant climate of the earth.

The story of the discovery and first sale of the Eureka has been told and retold, and almost always with injustice to the intelligence of Miller, its discoverer. Miller was a pocket hunter by profession and knew his business well. When he struck the trace which led to the Eureka, he was "flat broke" and the flour was low in the sack. He camped on the property and waited for things to come his way, meanwhile, with a hand mortar, extracting enough gold to meet his expenses. Now, where the lode was discovered, it lay in the form of a "blanket lead." A strip several hundred feet across was lying exposed on the hillside. At first this was erroneously thought to be the width of the vein and as it prospectively well almost all the way across, the proposition was considered a stupendous one. Miller sank a shaft or two but at the depth of 10 or 12 feet drove through the quartz into the earth beneath. His prospecting probably served to convince him that the mine was only a detached mass of quartz without any permanent ledge. So Miller "shot" the holes full again, would not allow any one else to sink on the property, and utterly refused any and all bonding propositions. For spot cash he would sell, and no other way. The reason was that he had no faith in the permanence of the property. He refused bonding

propositions without number and finally sold to the Eureka Mining Co. for \$35,000, cash.

The "blanket" portion merely had a little extra "dip" and the permanent vein was found in place. The Eureka Mining Co. fitted the mine up at considerable expense. They installed a 40 ton roller mill and a 60 ton cyanide plant. The roller process, it was discovered later, was ill adapted to this particular rock. Its operation on the surface ore, that had been partially disintegrated by the elements, was fairly good but on the harder quartz where the vein was in



THE EUREKA MILL.

place and permanent, it would not crush the rock satisfactorily. The cyanide process was a failure, owing to the presence in the ore of a small per cent of sylvanite, enough to cause it to resist the chemical action. With all these disadvantages, the ore paid fairly well under the operation of the Eureka company. They milled 1340 tons which produced \$14,000 in free gold, while the concentrates netted \$250 per ton.

Last spring the mine was purchased by the Oregon & California Gold Fields Company for \$65,000 and was refitted throughout with new equipment. The roller process for crushing the ore was abandoned and in its stead there was installed a stamp mill of 10 stamps. A 35 horse power air compressor was added, with machine drills and all machinery necessary to a thorough equipment. The power is furnished by two boilers of 50 and 45 horse power respectively, and three

engines. A first-class electric light plant is among the features of the mine's equipment. The mine was fitted up and operations were carried on under the direction of Walter de Varilla, the eminent mining engineer. At the time the new company took hold of the property, there were 18,000 tons of ore blocked out. More development work was immediately begun and 40,000 tons more were blocked out in the first few months. The ore that has been milled had been estimated to produce \$12 to the ton. On being worked, it yielded \$25 per ton. The ore is a ribbon structure, carrying a large percentage of its value in free gold. It carries about 1/4 of one per cent sylvanite which renders it impervious to the cyanide process. About 65 per cent of the values are caught in the battery and plates. The remainder are in the concentrates, secured on Willey tables. A 40 mesh screen is used. A large percentage of the values were lost in

the former method of working and as high as \$108 per ton has been secured from the tailings.

There are two tunnels with an aggregate length of 750 feet. The upper level is run on the vein 400 feet. The lower tunnel is run on the mill level and is 250 feet in. From this tunnel a winze has been sunk 35 feet, making the entire depth thus far attained 525 feet. The ore chute has a length of 385 feet. The vein varies from three to 12 feet in width, averaging four or five feet. The original formation was serpentine on the foot wall and diorite on the hanging wall. At the depth now attained, a metamorphous or slate dyke appears, crowding through the formations, in the form of a "horse" between two veins, while the true vein occurs in slate. A crosscut shows this dyke to be 25 feet wide at the lowest depth reached in the workings. Immense ore reserves occur in the slate.

The Eureka is situated nearly due west of Grants Pass and about 40 miles distant by the somewhat circuitous route. It is about 16 miles from Selma, the nearest wagon road point. With no great difficulty a road could be built to the mine from Swede Basin, only a few miles distant and such a road has been projected. It would be a benefit not only to this mine and its immediate vicinity, but to all the vast country tributary to the lower Illinois river, a field as yet barely touched by the prospector.

In the opinion of many mining men of judgment and experience, the Eureka is destined to become one among the very best mines of the coast. The uniform high grade quality of its ore and the immense quantity obtainable, the facilities for working, and better still the magnificent showing at the lowest depth, make this proposition almost undisturbable. The features of ore and formation are identical with those of some of the greatest mines of California, and other states, a fact quickly noted and appreciated by mining men.

With mines in operation like the Eureka and the Greentack, Josephine county needs only a few more steady producers to surpass as a mining country any section of equal area on the coast.

Jackson County Mines.
Frank Ketchum, who purchased the Bachelor property on Sardine creek, has put a new line of pipe into the diggings and is driving "mountains to the sea."

James Smith who purchased the Yoman property on Sardine creek, intends to "knock as much gravel as the next one" this year and already has quite a slice of bedrock uncovered.

H. L. White, of Ashland, who owns the placer claims at the forks of Sardine creek, has two men at work with his giant. A new ditch is being used on this property which gives a pressure of 255 feet through an 11-inch pipe.

Ex-Senator E. B. Dufar has had men at work on his deep race all fall and managed to get it in first class shape before the heavy rains. His giant is now running night and day. This mine is another of Foothills' good producers.

George Lance and Lee Cook are blasting the bank in Gold Gulch diggings on Foothills creek and piping the gravel night and day. When the water failed last spring the boys were piping ground that averaged \$1.25 per yard. Summer prospecting proved the bank to be an extensive back channel and portions of it averaged \$1.60 per yard. This property will make a big clean-up in the spring.

The Black Gold Channel placer mine on Foothills creek, under the management of A. E. Rubel, who has the property leased, is being worked with two giants. That is the only mine in that locality using a Rubel elevator. Six men are employed in the diggings this year and from the amount of bed rock uncovered so far the spring clean-up will be far ahead of the average which runs into the thousands. Medford Mail.

As in Former Years

We have prepared our stock for a full selection of Christmas Presents and have laid in a large assortment of gifts that are both useful and ornamental. Who would not rather receive a fine piece of Triple Plated Silverware than one of those fancy articles which are made to sell but no to use. We carry a fine assortment of

Rogers 1847 Silverware
and would especially call your attention to the Shell Satin Pattern in Knives and Forks. We also have Berry Spoons, Cake Plates, Syrups, Cake Knives, Pie Knives, Etc., Etc.

Holiday Chinaware
Is always an acceptable present and this year the patterns and decorations are prettier than ever. Just take a look at our corner window for a tasty line of samples.

What Every Boy Wants.
And we have it in the complete stock of all kinds of pocket cutlery. You can get a good Knife for 25 cents.

Stransky Steel Ware
Comes strictly under the useful presents, but every good cook knows what a comfort it is to have clean enameled ware that will last, won't flake and looks well.



You Ought to Have One

Because they are the best stoves on the market, and are guaranteed.

All of these gifts are the kind that become friends of the family and will gladden the heart of both giver and recipient.



Odd Fellows Building. **CRAMER BROS.**