

502 Real Estate 502 Real Estate 502 Real Estate 502 Real Estate 502 Real Estate 502 Real Estate

**Eastern Oregon Realty**  
**JERRY FRANKLIN, GRI (ABR) SRES**  
*Principal Broker/Owner, 541-820-3721*  
**TRACI FRAZIER**  
*Principal Broker, 541-620-0925*  
**PETE TEAGUE**  
*Broker, 541-620-0841*  
 160 E. Main • John Day, OR 97845  
 Over 87% of buyers search the internet before purchasing. We are active members of the Regional & Local Multiple Listing Service and have exposure on numerous national websites.  
**Serving Eastern Oregon Since 1979**  
 Give us a call today for a free market analysis.

Running low on inventory. If you're thinking of selling, give us a call.

**FEATURED LISTINGS**



**3571R** Beautiful home on 166+/- acres. 2,600sqft. 3bd/2ba. Guest house w/garage-shop, 32x40 barn w/ stalls. 26595 Laycock Creek Rd. John Day **\$1,377,500 RMLS#22134121**



**3570R PRICE REDUCTION.** Ranch style house. 4bd/2ba, 2254 sq.ft. Detached 800+sq.ft. guest house with power & plumbing to the building. Covered patio .57acre lot. 300 NW Charolais Hts. John Day \$425,500 \$415,500 **\$399,999 RMLS#22300438**

**RESIDENTIAL**

**3572R NEW LISTING.** 3bd, 2ba. 1948 Cottage Style Stucco Home. 1140 Sq. Feet. .12-acre lot. Centrally located. Great starter home or investment property. 317 NW 3rd Ave. John Day **\$175,000 RMLS#22341110**

**DEVELOPMENT/ACREAGE**

**3557A PRICE REDUCTION.** 222+/- acres spring ground and mountain range. Perimeter fenced, cased well with pump. Zoned (MUR) Multiple Use Range. 13S-30-25 TL 1600 John Day \$330,000 **\$320,000 RMLS#21249804**

**3569L MOTIVATED SELLER.** 2 Large lots at the end of Adam Drive. Great mt. views. Adam Drive Canyon City **\$29,500 RMLS#22146263**

**3549L IRONWOOD ESTATES** lot for sale. .62ac ready for your new home. 219 Valley View Dr. John Day **\$53,500 RMLS#21043320**

**3564L** Many possibilities with this downtown commercial lot! 153 NE Dayton St. John Day \$40,000 **\$35,000 RMLD#21267533**

**COMMERCIAL**

**3565C PRICE REDUCTION. GOOD PROFIT POTENTIAL.** Silver Spur family restaurant at junction of Hwy. 395 and 26. Seating for 36 customers, off street parking. 150 Ingle St. Mt. Vernon **\$250,000 \$230,000 RMLS#21205307**

WE PROVIDE QUALITY SERVICE FOR BUYERS AND SELLERS: EXPERIENCED AGENTS, SATISFIED CUSTOMERS, LASTING FRIENDSHIPS, HOME WARRANTY FOR BUYER/SELLER, IRS 1031 EXCHANGES, ACCREDITED BUYER/SELLER REPS, SENIOR REAL ESTATE REPRESENTATION

**COMMERCIAL**

**3550C** Prairie City Gas Station. Two service bays, attached mechanics shop with additional hoist. Covered fueling area with three card lock systems. Additional fueling area with good access for large trucks/motor homes. Possible terms for qualified buyer with large down. 114 E. Front St. Prairie City **\$800,000 RMLS#21577820**

**Your Property Could Be On This List:**

- PENDING SALES:**  
 3518A 160ac. Bates \$225,000  
 1772 Res. JD \$165,000  
 3554R 3/2 JD \$795,000  
 1777 Res. LC \$360,000  
 1781 Res. \$360,000  
 3562R 3/1 JD \$229,900  
 3573R 3/2 pc \$235,000  
 1784 Land \$167,500  
 3574R 3/2 JD \$239,500
- RECENT CLOSINGS**  
 Rec. Unity \$139,500  
 2/2 PC \$239,500  
 3548R 3/1.5 MV \$235,000  
 3543L Lots. CC \$675,000  
 3566-3567 Lots-JD \$300,000  
 1779 Res. CC \$68,000  
 3530RR Unity \$137,500  
 3559C Austin House Bates \$450,000  
 3568R Res. JD \$324,999  
 1778 Res. JD \$150,000

**MADDEN REALTY**  
 116 NW Bridge Street Suite 11, John Day, OR 97845  
 www.maddenrealestateastoregon.com  
**Lindsey Madden**  
 Principal Broker  
 541-792-0031  
 Lmadden88@outlook.com  
**Michal Madden**  
 Principal Broker  
 541-620-4408  
 Michal.madden@yahoo.com  
**De Ann Sandor**  
 Broker  
 360-690-5233  
 deannsandor@gmail.com  
 Your Hometown Realtors  
 541-575-0990  
 Licensed in the State of Oregon

**RESIDENTIAL: LAND & COMMERCIAL:**

**NEW! #203** 3 Bed, 1.5 bath, 1,898 sq ft, 40'x110' shop w/concrete floor, 20'x60' machine shed, .99 Acres, 59468 HWY 26, MV **\$305,000**

**REDUCED! #193** — 1952 Ranch style home, 3 bed, 1 bath, 1,662 sq ft, 1,248 sq ft unfinished basement, wood floors, fruit trees, .88 acres, near the national forest and John Day River for all your outdoor activities, 635 HWY 402, Monument, OR **\$260,000**

**#187** 3 Bed, 2.5 bath, bonus rooms in the upstairs, 1,792 sq ft, new hardwood floors throughout main level, metal roof, outbuilding, fenced in yard, 511 S. Canyon Blvd, JD **\$215,000**

**REDUCED! #186** 2 Bed, 1.5 bath, 1,192 sq ft, creek side country living in the middle of Mount Vernon, half an acre lot, 221 Ingle Street, MV **\$228,000**

**REDUCED! #169** 2 bed, 1 bath, 814 sq ft, updated interior, pellet stove, custom kitchen cabinets, .08 Acres, new metal roof, 105 SE Gunther St, JD **\$130,000 \$127,500**

**HOMES ON ACREAGE:**

**REDUCED! #175** 1900 Victorian Home, 3,098 sq ft, 5 bedrooms, 3.5 baths, studio, underground sprinklers, fenced in garden, ditch rights, 1.61 acres, 60355 HWY 26, John Day, OR 97845 **\$470,000 \$445,000 \$410,000 \$398,000**

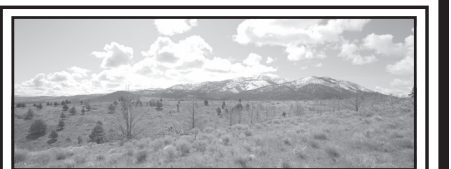
**LAND & COMMERCIAL:**

**NEW! #198** Large commercial building with leases in place, 13 office spaces, gymnasium, fiber optics, updates throughout, LED lighting, mini splits, metal roof, off street parking, 116 NW Bridge St, JD **\$1,200,000**

**NEW! #192** 2.40 acres, flat and steep hillside, city services in the street, power is close, mountain views, manufactured homes are allowed, Patterson Drive, CC **\$55,000**

**#182** John Day Motel, 14-units & manager suite, live work opportunity, upgrades, all furniture, product, business name included in the sale, 250 E. Main St, JD **\$425,000**

**#111 & #112** Two lots both .61 acres, water & power at street, private sewer line, canyon mountain views, CC&R'S. Adams Dr, CC **\$32,000 each**



**FEATURED LISTING:**

**NEW! #202** 50 Acres of private property just minutes from town. 360-degree views, Manufactured homes allowed, borders a 40 acre BLM allotment, 600 Ferguson Rd, JD **\$229,000**



**FEATURED LISTING:**

**REDUCED! #188** 3 Bed, 2 bath, 1981 Cedarbrook MH, 1,782 sq ft, backyard overlooking the JD River, .40 acres, 16x20 workshop, 801 E. Main St, JD **\$235,000 \$225,000**

**Pending Sale:**

26 ACRES MV \$40,000  
 12 +/- ACRES JD \$185,000  
 4/1 PC \$205,000  
 12.24 acres Monument \$160,000  
 4/4 CC \$425,000  
 2/1 JD \$128,000  
 2/1 JD \$165,000

**SOLD:**

4/2 CC \$405,000  
 4/1 JD \$202,000  
 3/2 JD \$216,000  
 4/2 JD \$305,000  
 3/1 MV \$265,000  
 3/2 JD \$330,000  
 3/2 CC \$66,500  
 178 Acres JD \$300,000  
 3/2 MV \$212,000  
 4/1 pc \$199,000  
 40 ACRES BC \$175,000  
 3/2 JD \$255,000  
 4/2 CC \$625,000

**BLUE MOUNTAIN EAGLE** Grant County's newspaper since 1898  
 MyEagleNews.com • 541-575-0710

103 Announcements 103 Announcements 103 Announcements 103 Announcements 103 Announcements 103 Announcements

**HOCUS-FOCUS** BY HENRY BOLTINOFF  
  
 Find at least six differences in details between panels.

**MAGIC MAZE • FRENCH SURNAMES**  
 J P M J H E B F Y V T Q O L I  
 G D B Y W ( B L A N C H E T ) R  
 P M K I F D B V Y T O R R E P  
 W U S N Q Y O R T M E R O K I  
 F D B Z I T Z E N B X E F W U  
 S Q O N L T N O L S J I U H F  
 D C A Y W O R O K B I P A V T  
 S Q P N M R C A P R M O E L K  
 I H F E A T N O M U A E B C B  
 Z Y W H V U S R Q P D S R U N  
 L A C S A P M L S A M O H T D  
 Find the listed words in the diagram. They run in all directions forward, backward, up, down and diagonally. Unlisted clue hint: IMPRESSIONIST CLAUDE —  
 Beaufort Colbert Martin Sarkozy  
 Beaumont Dubois Pascal Thomas  
 Blanchet Dupont Perrot Tremble  
 Charon Favre Pierre  
 ©2022 King Features Syndicate, Inc. All rights reserved.

**GO FIGURE!** by Linda Thistle  
 The idea of Go Figure is to arrive at the figures given at the bottom and right-hand columns of the diagram by following the arithmetic signs in the order they are given (that is, from left to right and top to bottom). Use only the numbers below the diagram to complete its blank squares and use each of the nine numbers only once.  
 DIFFICULTY: ★  
 ★ Moderate ★★ Difficult  
 ★★★ GO FIGURE!  
  
 ©2022 King Features Syndicate, Inc.

**Wishing Well®**  

4	3	5	8	7	8	7	6	5	4	6	5	6
H	L	T	L	P	O	O	D	I	E	A	M	R
8	3	5	3	6	4	8	7	5	4	5	6	2
V	O	E	V	E	A	E	I	T	L	O	T	N
6	3	8	4	2	7	5	2	3	2	5	2	7
O	E	A	T	E	S	C	W	O	T	H	E	
3	2	8	4	7	6	4	8	5	6	2	7	6
F	O	B	H	D	B	I	O	A	E	U	F	B
4	6	3	4	3	6	4	3	7	2	8	7	8
M	R	R	P	E	A	R	S	O	G	U	R	N
2	7	3	7	6	3	6	7	2	7	4	8	7
H	V	E	I	V	A	E	C	T	T	O	D	O
3	7	2	4	8	5	3	5	4	7	3	5	4
R	R	S	V	S	N	C	G	E	Y	H	E	S

 HERE IS A PLEASANT LITTLE GAME that will give you a message every day. It's a numerical puzzle designed to spell out your fortune. Count the letters in your first name. If the number of letters is 6 or more, subtract 4. If the number is less than 6, add 3. The result is your key number. Start at the upper left-hand corner and check one of your key numbers, left to right. Then read the message the letters under the checked figures give you.  
 ©2022 King Features Syndicate

664 Services 664 Services 664 Services 664 Services 664 Services 664 Services

**SERVICE DIRECTORY**

A Services Directory listing is \$9.95 per week for a single ad (13 week minimum). Call the Blue Mountain Eagle today! 541-575-0710.

<p><b>INTERNET</b>    <b>CONNECTIONS</b>                  Connect to what's important... FASTER!                  FIBER FAST INTERNET &amp; PHONE                  541-932-4411                  otconnections.net                  SMART RURAL SECURITY GIG-CAPABLE PROVIDER</p>	<p><b>JANITORIAL SERVICE</b>    <b>Eastern Oregon Building Maintenance</b>                  Blinds • Carpets • Floors • Windows • Ducts                  Upholstery • Power Sweeping • Snow Removal                  Fire &amp; Flood Restoration                  "Professional Cleaning Service"                  541-575-1741 • 1-800-282-1741</p>	<p><b>NURSERY</b>    <b>Better Blooms &amp; Gardens</b>                  Between John Day and Prairie City                  541-820-3329</p>	<p><b>GROOMING</b>    <b>Oodles of Doodles GROOMING COMPANY</b>                  541.620.3729                  250 SE Harris Street                  Prairie City, OR 97869</p>	
<p><b>PLUMBING</b>    <b>Patriot Plumbing</b>                  American Standard Sinks &amp; Toilets, Delta Faucet, Bradford White, Water Heaters                  #CCB114195                  245 N. Canyon Blvd., Canyon City                  541-575-2144                  Mon.-Fri. 8am-4:30pm                  Sports Store: Mon.-Thurs. 8am-4:30pm</p>	<p><b>PORTA POTTY</b>    <b>BYRON'S EXCAVATING</b>                  Potties to Go!                  • Clean, sanitized • Portable                  • Septic tank pumping                  • We deliver &amp; pick up                  EVENTS • FARMING CONSTRUCTION SITES                  193 Ford Road, John Day                  CCB#181941                  541-575-0828</p>	<p><b>SANITATION</b>    <b>CLARK'S TRANSFER STATION</b>                  HOURS                  Office Hours: Mon-Fri 11am-2pm                  Transfer Station Hours: Wed-Sat 9am-4:30pm                  Recycling Available • NO Burning Barrels                  DISPOSAL                  ROLL OFF CONTAINERS FOR LARGE JOBS                  Serving John Day, Canyon City, Prairie City, Mt. Vernon &amp; Dayville                  541-575-0432</p>	<p><b>SPORTS</b>    <b>ANDY'S PLUMBING &amp; SPORTS</b>                  ALL TYPES OF ARCHERY EQUIPMENT                  BOWS: Martin Jennings-Hoyt                  245 N. Canyon Blvd., Canyon City                  541-575-2144                  Mon.-Fri. 8am-4:30pm                  Sports Store: Mon.-Thurs. 8am-4:30pm</p>	<p><b>STORAGE</b>    <b>R&amp;S SELF-STOR</b>                  Serving Grant County Since 1993                  196 UNITS • VARIOUS SIZES                  RV STORAGE AVAILABLE                  Secure • Clean                  Outdoor Lighting • Fenced                  731 W. Main, John Day                  541-575-1772 or 541-575-2692</p>
<p><b>VETERINARY</b>    <b>JOHN DAY RIVER VETERINARY CENTER</b>                  • Internal medicine                  • Surgery                  • Annual exams                  • Vaccinations                  • Equine Services                  • Nutritional guidance                  • Heartworm prevention                  59989 Hwy. John Day, OR                  541-932-4428</p>	<p><b>WELL DRILLING</b>    <b>Marciel Well Drilling &amp; PUMPS</b>                  Experienced Air Rotary Drilling • Licensed &amp; Bonded                  Also: Complete Pump Installation &amp; Service                  CALL FOR FREE ESTIMATES                  JOHN MARCIEL                  541-932-4334                  MT. VERNON</p>	<p><b>WELDING SUPPLIES</b>                    • Industrial Gases • Industrial Machine Work                  • Full Automotive • Lincoln Wire and Rod                  • Replacement parts for welders, plasma cutters &amp; torches                  • Special Orders Welcome                  QUALITY PARTS, QUALITY SERVICE, QUALITY PEOPLE                  NAPA                  721 W Main St, John Day, OR 97845 • (541) 575-1850</p>	<p><b>YOUR AD</b>                  Have your FULL COLOR ad seen weekly for only  <b>\$9.95 PER WEEK</b>                  WHAT A GREAT BUY!                  CALL US NOW!                  541-575-0710</p>	