



541.432.5000
83365 Joseph Hwy, Joseph, OR 97846

**PROPERTIES FOR SALE IN
WALLOWA COUNTY**

See more listings at:
www.RubyPeakRealty.com



Cozy 2 bedroom, 1 bath home on Main Street Joseph. Low maintenance home built in 2010. Front porch with a mountain view and fenced yard with storage shed. Solid wood cabinets, vinyl plank flooring, and knotty pine trim and doors.
MLS#211071130 **\$329,000**



Turn-key operation: Goebel's gas station and convenience store. 3rd generation family business with year-over-year increased revenue. Established customer base and excellent exposure on Hwy 82. 2 bay shop plus 2 storage buildings.
MLS#21264528 **\$625,000**



Cattle, hay and grain ranch outside Wallowa. 1788 acres with timber, tillable non-irrigated farmland, rangeland and over 300 acres CRP. New 2124 sq.ft. 3 bedroom, 2 bath home. Shop with concrete floor, barn, corrals, and more.
MLS#21577551 **\$2,595,000**



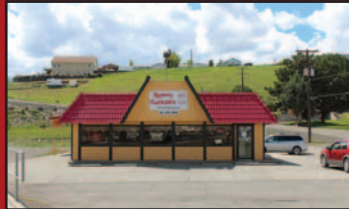
0.48 Acre Lot ready for your manufactured home or construct your dream home! Concrete pad with utilities in place including a private well and city sewer. Lots of room for you to play, garden, live and relax. Part of an estate sale.
MLS#21112632 **\$125,000**



Gorgeous updated Victorian home built in 1898 on 5.49 acres. House has parlor, 5 bedrooms, 3 baths, large loft. Separate 2 bed, 1 bath guest quarters. Equine barn with living space. Historic barn and storage shed. Fenced with water rights.
MLS#21124602 **\$1,750,000**



Buildable 160 acres with water, views and diversity. Property has Wallowa River, Spring Creek and Trout Creek meandering through sub-irrigated meadows. Other side of property has elevated views and native prairie grass rangeland.
MLS#21357748 **\$895,000**



Highly visible commercial location in Enterprise on Hwy 82 with lots of parking. 2200 sq.ft. building on 0.58 acre lot. Leased through June 2022 for \$2,300/month. Currently a restaurant but could be converted to other commercial uses.
MLS#21364634 **\$349,000**



Incredible views from this expansive home and lot! Birch wood floors, open floor plan and decks on upper level. Basement has separate living quarters. 3 bedrooms, 3 baths total. ICF construction. 2-car garage plus 20'x42' insulated shop.
MLS#21296398 **\$725,000**



Diane Daggett
Broker
541-398-1297



Lindsey Chrisman
Broker
541-398-8065



Kate Crawford
Broker
541-231-9714



Deidra Ripsom
Broker
541-324-1425



Kirk Makin
Owner,
Principal Broker
541-398-0340



Michele Baird
Principal Broker
541-398-1377



Anette Christoffersen
Principal Broker
541-398-1148



Ken Wick
541-398-0282



Rob DeSpain
541-398-0300



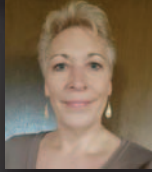
Karen Raminha
541-398-0308



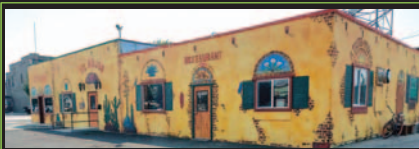
Adam Saxton
541-263-1485



Joe Dawson
541-263-1884



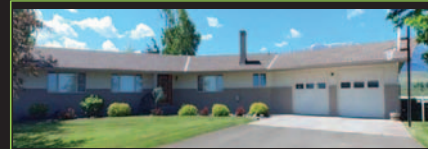
Tammi Chapman
602-793-2772



Mexican Restaurant & building, with 3 partial baths, on very large lot with lots of parking. Recent remodel including new custom bar area. Distinctive interior & exterior paint. Turn key operation. Inventory to be agreed upon prior to COE.
MLS#21271461 **\$975,000**



80. Ac. irrigated & buildable parcel close to ski area. Panoramic Mtn & valley views. TWO 3 Tower pivots with gravity flow irrigation. Seeded to Oats & Barley. 255' well. County maintained road.
MLS#21255634 **\$940,000**



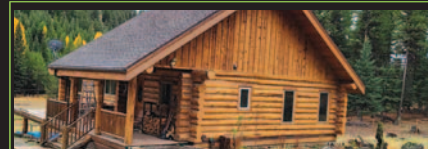
One of Wallowa County's premier homes. Located 3 miles east of downtown Joseph on 44 irrigated acres (gravity fed). Paved driveway, security system, fenced, mature trees and landscaping, pool, spa, shop, barn and a finished basement.
MLS#21618629 **\$1,499,000**



This view lot leaves nothing to chance when it comes to a view of the spectacular Wallowa mts. and surrounding valley. Utilities are in. Water, sewer, power to the property, rolled curb and gutter sidewalks & 32ft. paved road.
MLS#18505592 **\$97,000**



New subdivision offers beautiful Mt. views, underground utilities, paved roads, within walking distance to downtown Joseph. Grab your contractor, build your dream home, and settle in to the Wallowa Co. lifestyle. Lots starting at **\$76,320**



Bronson log home on 20 timbered acres with Davis Creek meandering through it. Lots of wildlife, Elk, Deer, Turkeys and more. Horse barn and shop/storage/garage. 3BR, 2 Ba and Family room in walk out basement. You can drive to lower level.
MLS#21510408 **\$699,000**

Real Estate Associates 103 N Main P O Box 84 Joseph, OR 97846 rea@eoni.com www.wallowacountyland.com